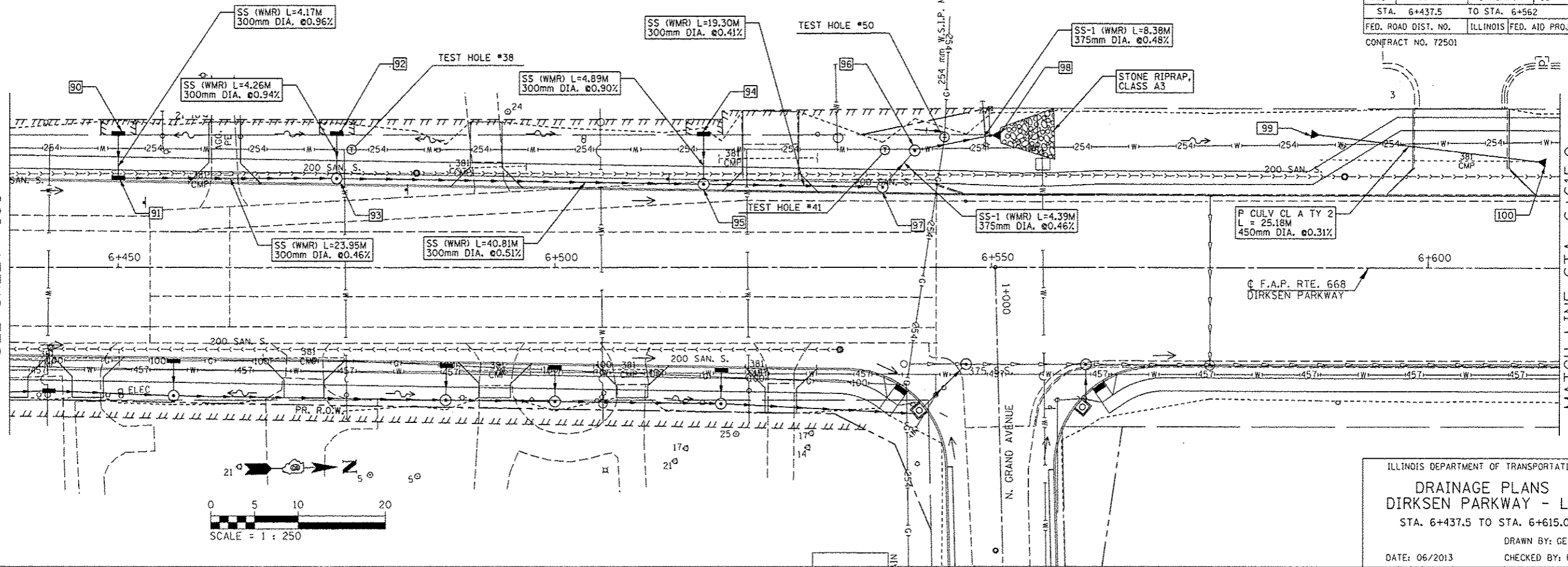


F.A.P. RTE.	SECTION	COUNTY	TOTAL SHEETS	SHEET NO.
668	28R-1	SANGAMON	354	109
STA. 6+437.5		TO STA. 6+562		
FED. ROAD DIST. NO.		ILLINOIS	FED. AID PROJECT	
CONTRACT NO. 72501				

BY	DATE

MATCH LINE STA. 6+437.5
SEE SHEET 108

MATCH LINE STA. 6+615.0
SEE SHEET 110



ILLINOIS DEPARTMENT OF TRANSPORTATION
DRAINAGE PLANS
DIRKSEN PARKWAY - LT
 STA. 6+437.5 TO STA. 6+615.0
 DRAWN BY: GE
 DATE: 06/2013
 CHECKED BY: FML

90 STA. 6+450; 15.39m LT. INL TY A W/ TY 8 G RIM EL.=180.30 INV. EL.=179.43 E	91 STA. 6+450; 10.02m LT. INL TY B W/ TY 15 F&L RIM EL.=180.90 INV. EL.=179.39 N,W	92 STA. 6+475; 15.38m LT. INL TY A W/ TY 8 G RIM EL.=180.12 INV. EL.=179.32 E	93 STA. 6+475; 9.62m LT. MH TY A 1.2m DIA. W/ TY 15 F&L RIM EL.=180.76 INV. EL.=179.28 N,S,W	94 STA. 6+517; 15.33m LT. INL TY A W/ TY 8 G RIM EL.=179.67 INV. EL.=179.09 E	95 STA. 6+517.00; 8.95m LT. MH TY A 1.2m DIA. W/ TY 15 F&L RIM EL.=180.47 INV. EL.=179.07 N,S,W	96 STA. 6+541.19; 13.42m LT. MH TY A 1.2m DIA. W/ TY 1 F&CL RIM EL.=180.16 INV. EL.=178.97 N,S	97 STA. 6+537.50; 8.62m LT. MH TY A 1.2m DIA. W/ TY 15 F&L RIM EL.=180.30 INV. EL.=178.99 S,W	98 STA. 6+550; 15.18m LT. PRC FLARED END SECTION 375mm DIA. INV. EL.=178.93 S
--	---	--	--	--	---	--	---	--

BY	DATE

