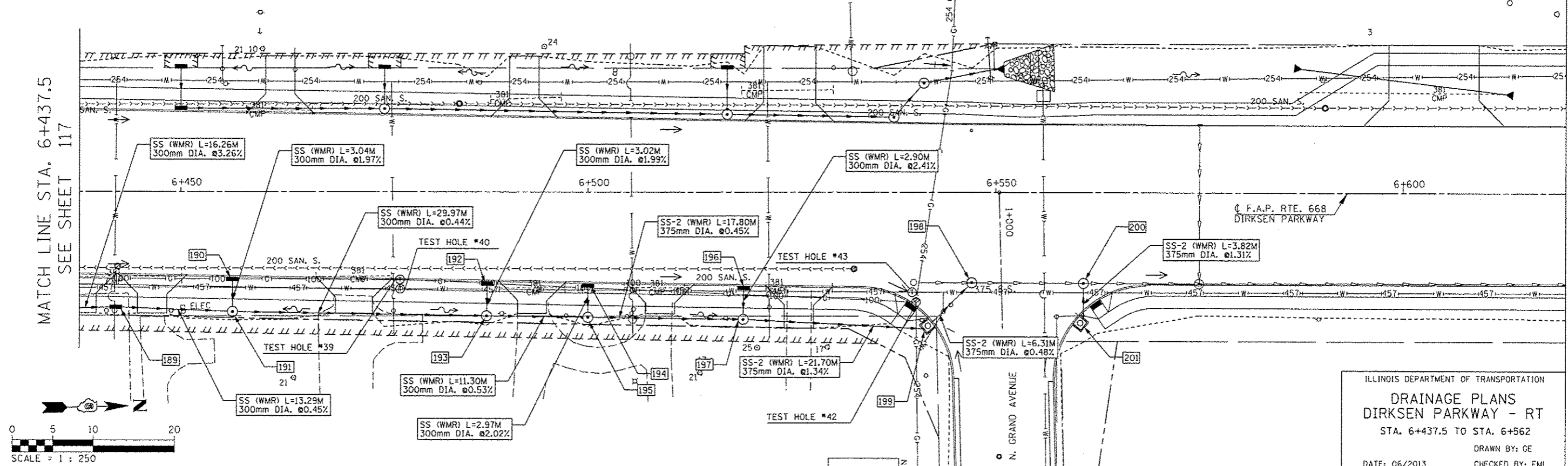


F.A.P. RTE.	SECTION	COUNTY	TOTAL SHEETS	SHEET NO.
668	28R-1	SANGAMON	354	118
STA. 6+437.5		TO STA. 6+562		
FED. ROAD DIST. NO.		ILLINOIS FED. AID PROJECT		
CONTRACT NO. 72501				

BY	DATE
FINAL SURVEY PLOTTED	
NOTE BOOK TEMPLATE	
AREAS CHECKED	
NO.	

MATCH LINE STA. 6+437.5
SEE SHEET 117



ILLINOIS DEPARTMENT OF TRANSPORTATION
DRAINAGE PLANS
DIRKSEN PARKWAY - RT
STA. 6+437.5 TO STA. 6+562
DRAWN BY: CE
DATE: 06/2013
CHECKED BY: FML

189 STA. 6+442; 14.19m RT. INL TY B W/ TY 8 F&G RIM EL.=180.70 INV. EL.=179.43 N,S	190 STA. 6+456.33; 10.49m RT. INL TY A W/ TY 15 F&L RIM EL.=180.87 INV. EL.=179.94 E	191 STA. 6+456.33; 14.74m RT. MH TY A 1.2m DIA. W/ TY 8 C RIM EL.=180.50 INV. EL.=179.37 N,S INV. EL.=179.88 W	192 STA. 6+487.50; 11.01m RT. INL TY A W/ TY 15 F&L RIM EL.=180.68 INV. EL.=179.71 E	193 STA. 6+487.50; 15.24m RT. MH TY A 1.2m DIA. W/ TY 8 G RIM EL.=180.32 INV. EL.=179.24 N,S INV. EL.=179.65 W	194 STA. 6+500; 11.22m RT. INL TY A W/ TY 15 F&L RIM EL.=180.59 INV. EL.=179.62 E
195 STA. 6+500; 15.39m RT. MH TY A 1.2m DIA. W/ TY 8 G RIM EL.=180.25 INV. EL.=179.18 N,S INV. EL.=179.56 W	196 STA. 6+519; 11.53m RT. INL TY A W/ TY 15 F&L RIM EL.=180.45 INV. EL.=179.50 E	197 STA. 6+519; 15.64m RT. MH TY A 1.2m DIA. W/ TY 8 C RIM EL.=180.05 INV. EL.=178.79 E INV. EL.= MATCH EX. N	198 STA. 6+547.10; 11.12m RT. MH TY A 1.2m DIA. W/ TY 1 F&CL RIM EL.=180.05 INV. EL.=178.79 E INV. EL.= MATCH EX. N	199 STA. 1+015.80; (N. GRAND AVE) 8.61m RT. INLET (SPECIAL) TY E RIM EL.=180.13 INV. EL.=178.81 S,W	200 STA. 6+560.78; 11.15m RT. MH TY A 1.2m DIA. W/ TY 1 F&CL RIM EL.=179.92 INV. EL.=178.66 E INV. EL.= MATCH EX. N, S
					201 STA. 1+015.89; (N. GRAND AVE) 9.07m LT. INLET (SPECIAL) TY E W/ TY 15 F&L RIM EL.=180.16 INV. EL.=178.80 W

BY	DATE
ORIGINAL SURVEY PLOTTED	
NOTE BOOK TEMPLATE	
AREAS CHECKED	
NO.	

