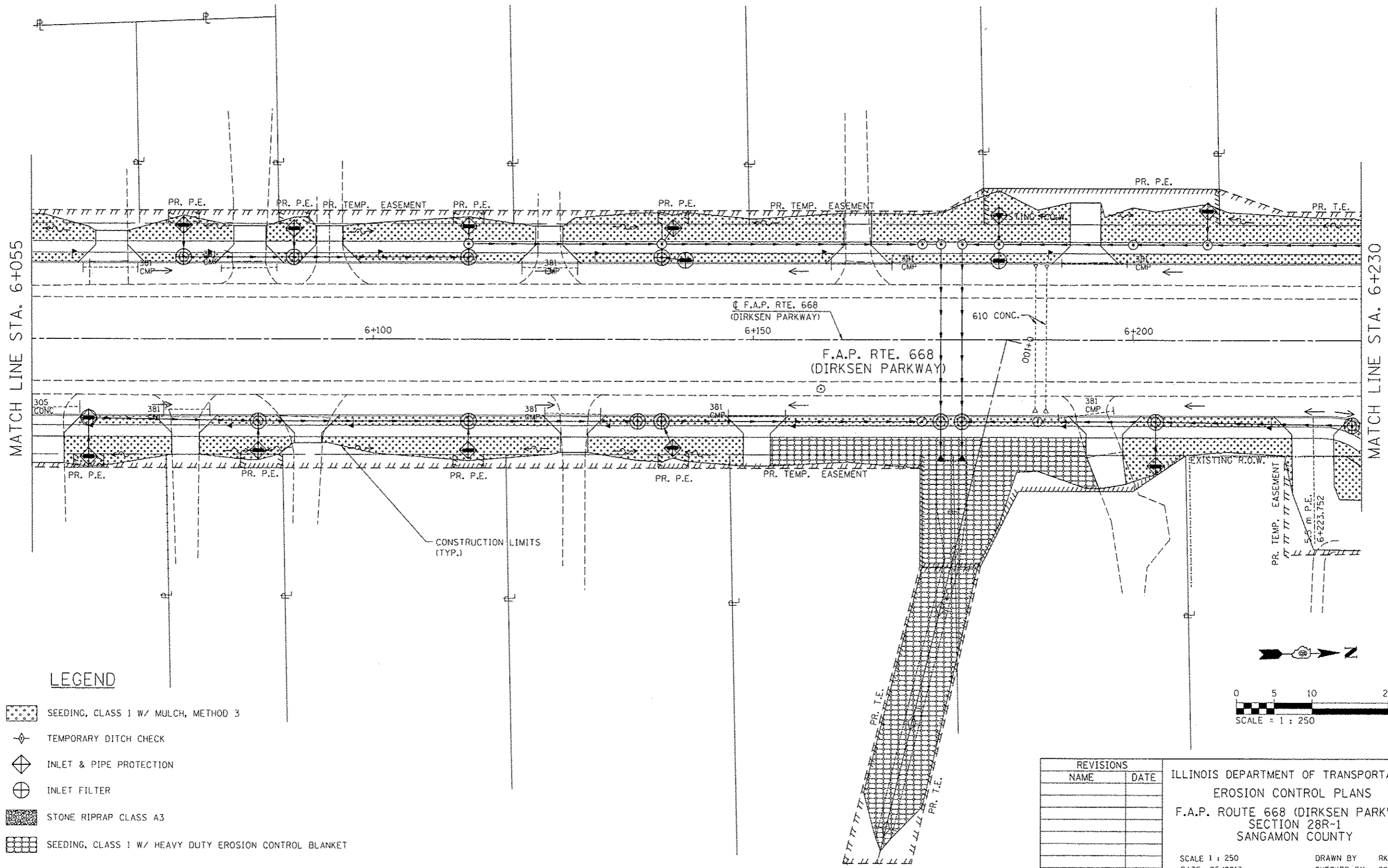


F.A.P. RTE.	SECTION	COUNTY	TOTAL SHEETS	SHEET NO.
668	28R-1	SANGAMON	354	133
STA. 6+055		TO STA. 6+230		
FED. ROAD DIST. NO.		ILLINOIS FED. AID PROJECT		
CONTRACT NO. 72501				

SEC 25, T16N, R5W, 3RD P.M.

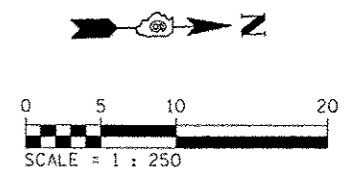
BY	DATE
FINAL SURVEYED	
SURVEY PLOTTED	
NOTE BOOK TEMPLATE	
AREAS CHECKED	
NO.	

BY	DATE
ORIGINAL SURVEYED	
SURVEY PLOTTED	
NOTE BOOK TEMPLATE	
AREAS CHECKED	
NO.	



LEGEND

- SEEDING, CLASS 1 W/ MULCH, METHOD 3
- TEMPORARY DITCH CHECK
- INLET & PIPE PROTECTION
- INLET FILTER
- STONE RIPRAP CLASS A3
- SEEDING, CLASS 1 W/ HEAVY DUTY EROSION CONTROL BLANKET



REVISIONS	
NAME	DATE

ILLINOIS DEPARTMENT OF TRANSPORTATION
 EROSION CONTROL PLANS
 F.A.P. ROUTE 668 (DIRKSEN PARKWAY)
 SECTION 28R-1
 SANGAMON COUNTY

SCALE 1 : 250
 DATE 06/2013
 DRAWN BY RK
 CHECKED BY SEW