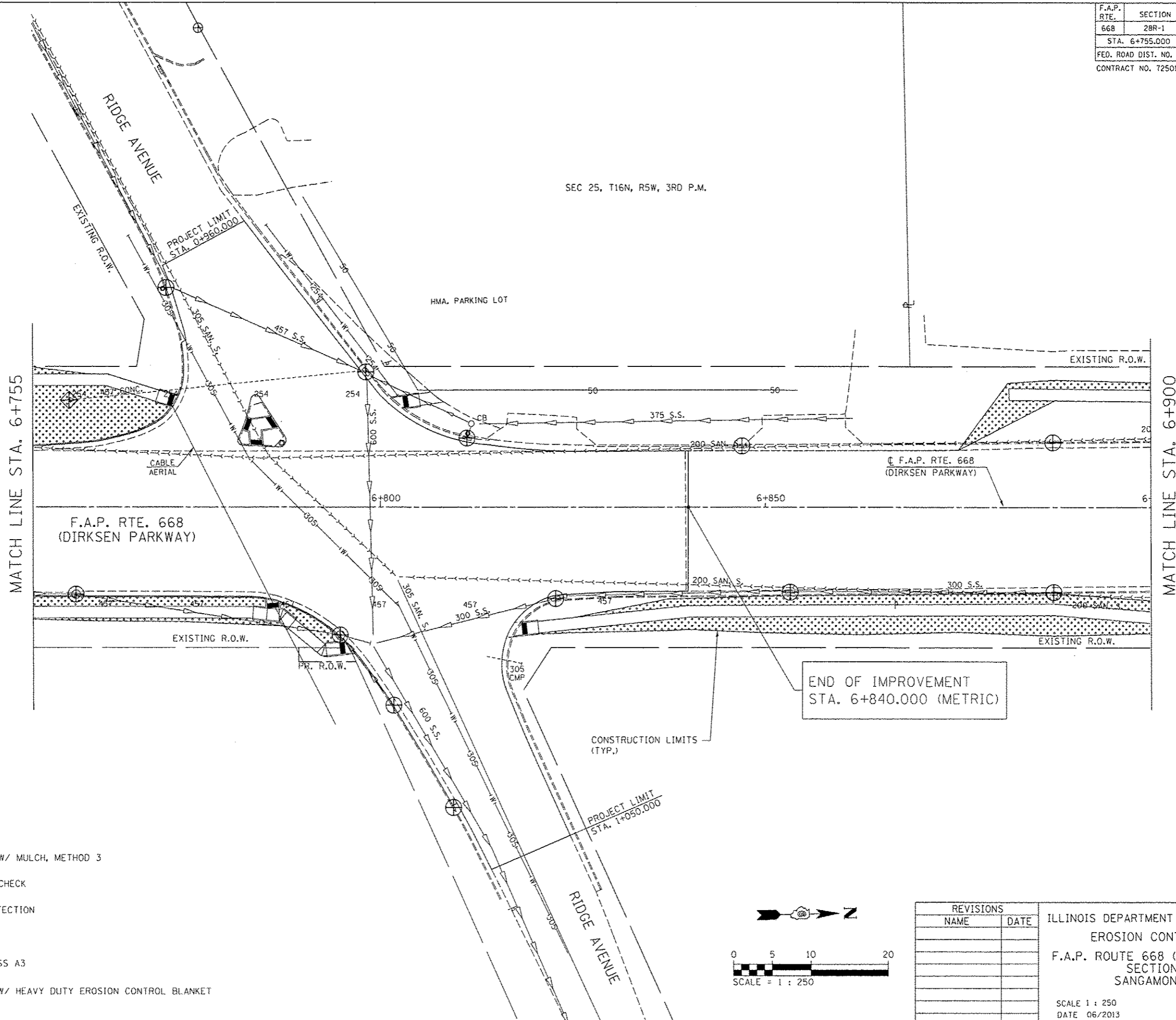


F.A.P. RTE.	SECTION	COUNTY	TOTAL SHEETS	SHEET NO.
668	28R-1	SANGAMON	354	137
STA. 6+755.000		TO STA. 6+900.000		
FED. ROAD DIST. NO.		ILLINOIS	FED. AID PROJECT	
CONTRACT NO. 72501				

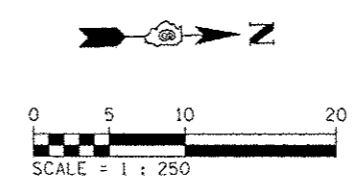
BY	DATE
FINAL SURVEYED	
SURVEY PLOTTED	
NOTE BOOK TEMPLATE	
AREAS CHECKED	
NO.	

BY	DATE
ORIGINAL SURVEYED	
SURVEY PLOTTED	
NOTE BOOK TEMPLATE	
AREAS CHECKED	
NO.	



**LEGEND**

- SEEDING, CLASS 1 W/ MULCH, METHOD 3
- TEMPORARY DITCH CHECK
- INLET & PIPE PROTECTION
- INLET FILTER
- STONE RIPRAP CLASS A3
- SEEDING, CLASS 1 W/ HEAVY DUTY EROSION CONTROL BLANKET



REVISIONS	
NAME	DATE

ILLINOIS DEPARTMENT OF TRANSPORTATION  
 EROSION CONTROL PLANS  
 F.A.P. ROUTE 668 (DIRKSEN PARKWAY)  
 SECTION 28R-1  
 SANGAMON COUNTY

SCALE 1 : 250  
 DATE 06/2013

DRAWN BY RK  
 CHECKED BY SEW