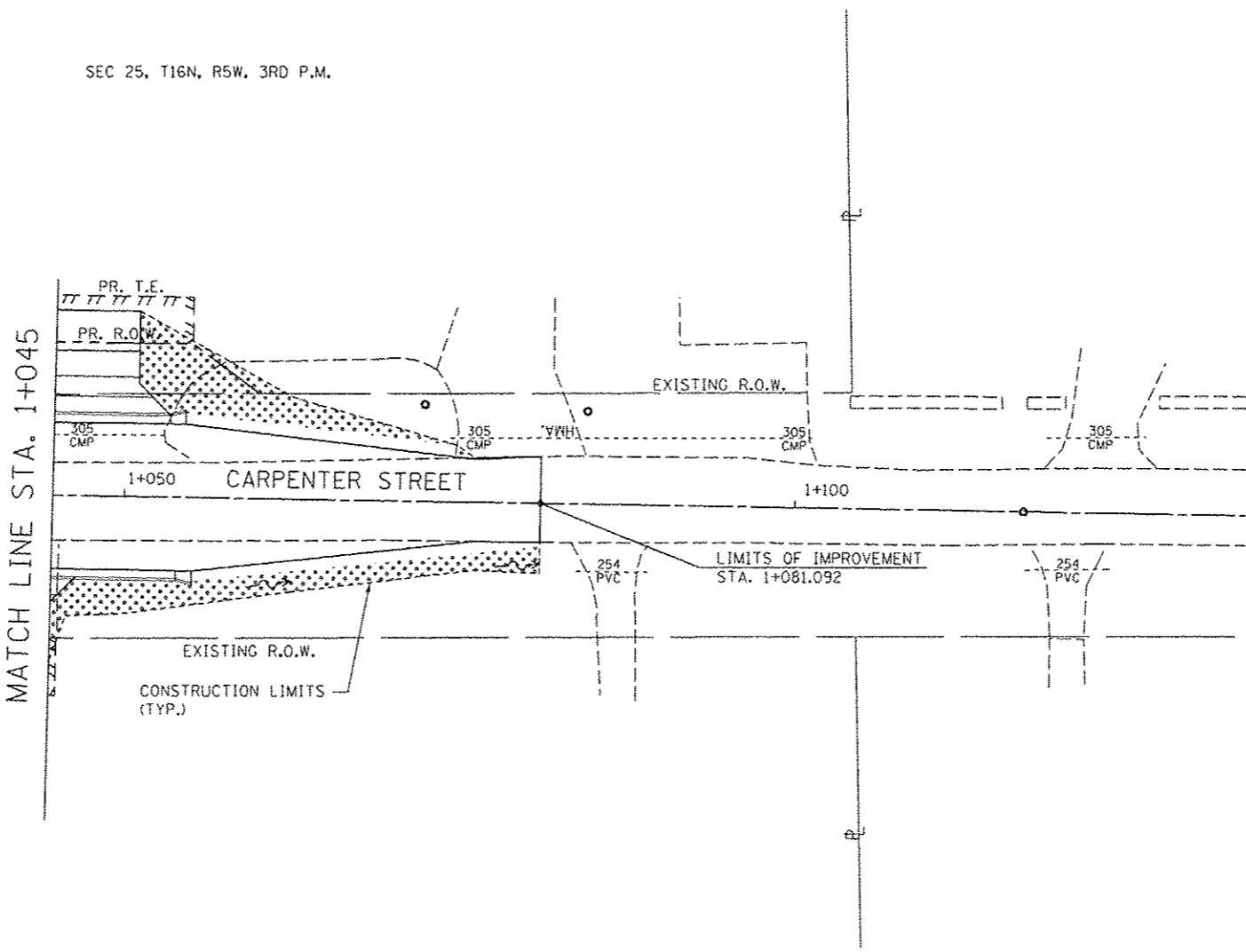


F.A.P. RTE.	SECTION	COUNTY	TOTAL SHEETS	SHEET NO.
66B	28R-1	SANGAMON	354	139
STA. 1+045.000		TO STA. 1+134.000		
FED. ROAD DIST. NO.		ILLINOIS FED. AID PROJECT		
CONTRACT NO. 72501				






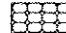
SEC 25, T16N, R5W, 3RD P.M.

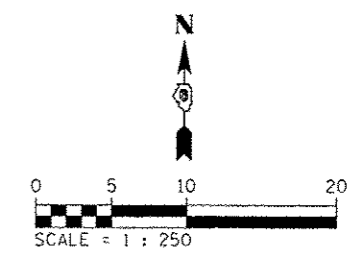


FINAL SURVEY	BY	DATE
SURVEYED		
PLOTTED		
NOTE BOOK		
NO.		
AREAS CHECKED		

ORIGINAL SURVEY	BY	DATE
SURVEYED		
PLOTTED		
NOTE BOOK		
NO.		
AREAS CHECKED		

LEGEND

-  SEEDING, CLASS 1 W/ MULCH, METHOD 3
-  TEMPORARY DITCH CHECK
-  INLET & PIPE PROTECTION
-  INLET FILTER
-  STONE RIPRAP CLASS A3
-  SEEDING, CLASS 1 W/ HEAVY DUTY EROSION CONTROL BLANKET



REVISIONS		ILLINOIS DEPARTMENT OF TRANSPORTATION EROSION CONTROL PLANS F.A.P. ROUTE 668 (DIRKSEN PARKWAY) SECTION 28R-1 SANGAMON COUNTY
NAME	DATE	

SCALE 1 : 250
DATE 06/2013

DRAWN BY RK
CHECKED BY SEW