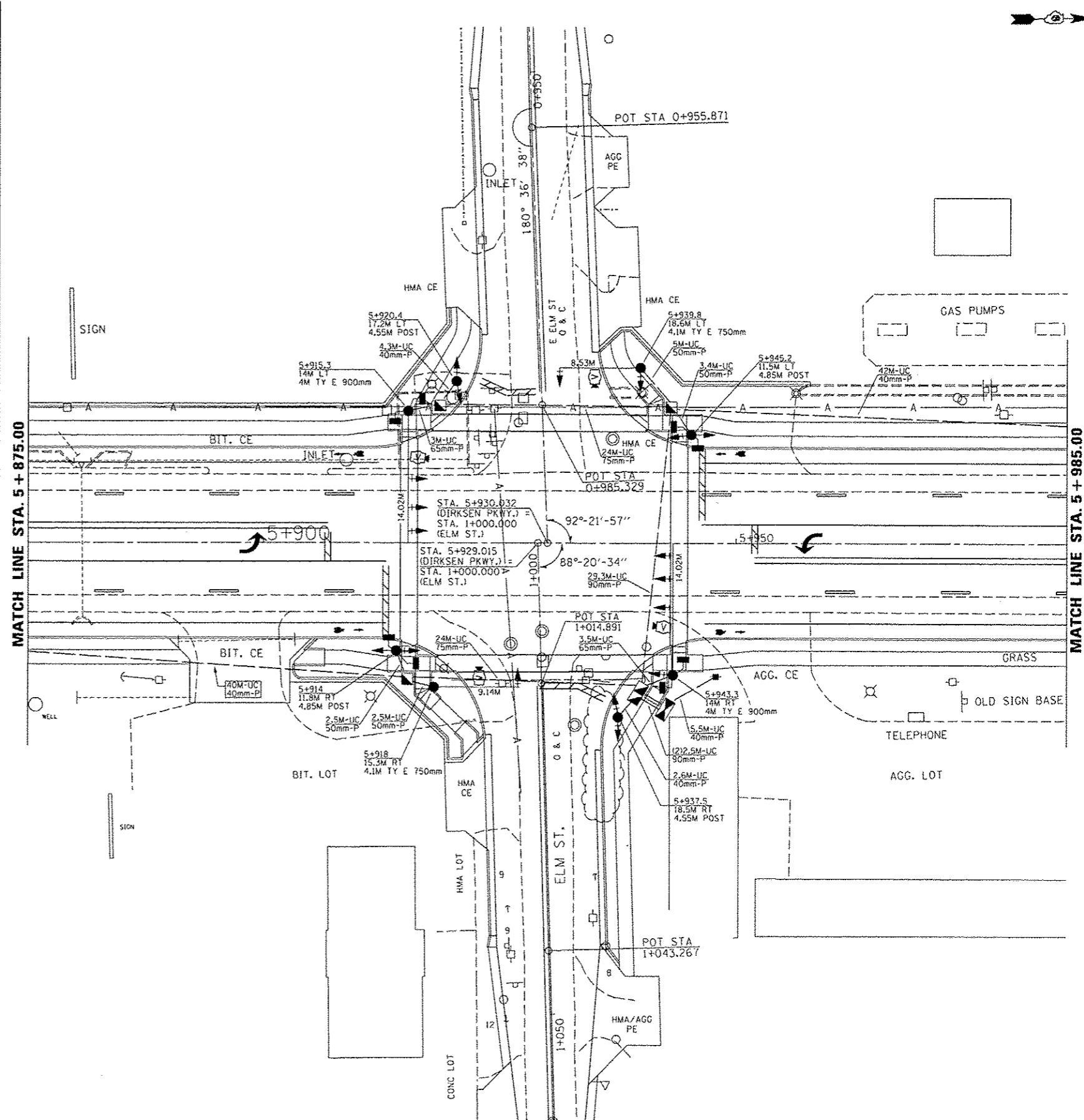


DIRKSEN PARKWAY & ELM STREET - TRAFFIC SIGNAL QUANTITIES

QUANTITY	UNIT	ITEM
2.06	SQ. M	SIGN PANEL - TYPE 2
1	EACH	SERVICE INSTALLATION, TYPE A
1323.4	METER	UNDERGROUND CONDUIT, PVC, 40MM DIA.
13.4	METER	UNDERGROUND CONDUIT, PVC, 50MM DIA.
6.5	METER	UNDERGROUND CONDUIT, PVC, 65MM DIA.
48	METER	UNDERGROUND CONDUIT, PVC, 75MM DIA.
34.3	METER	UNDERGROUND CONDUIT, PVC, 90MM DIA.
3	EACH	HANDHOLE
1	EACH	DOUBLE HANDHOLE
11	EACH	GULFBOX JUNCTION, COMPOSITE CONCRETE
1	EACH	FULL-ACTUATED CONTROLLER AND TYPE IV CABINET
1	EACH	UNINTERRUPTIBLE POWER SUPPLY, STANDARD
1	EACH	TRANSCEIVER - FIBER OPTIC
1389.3	METER	FIBER OPTIC CABLE IN CONDUIT, NO. 62.5/125, MM12F SM12F
136.5	METER	ELECTRIC CABLE IN CONDUIT, SIGNAL, NO. 14, 3C
592.7	METER	ELECTRIC CABLE IN CONDUIT, SIGNAL, NO. 14, 5C
119.3	METER	ELECTRIC CABLE IN CONDUIT, SIGNAL, NO. 14, 7C
293	FOOT	ELECTRIC CABLE IN CONDUIT, SIGNAL NO. 14, 9C
310	FOOT	ELECTRIC CABLE IN CONDUIT, SIGNAL NO. 14, 12C
701.1	FOOT	ELECTRIC CABLE IN CONDUIT, SIGNAL NO. 18 3C
8.3	METER	ELECTRIC CABLE IN CONDUIT, SERVICE, NO. 6, 2C
151.6	METER	ELECTRIC CABLE IN CONDUIT, EQUIPMENT GROUNDING CONDUCTOR, NO. 6, 1C
2	EACH	TRAFFIC SIGNAL POST, ALUMINUM, 4.55 METER
2	EACH	TRAFFIC SIGNAL POST, ALUMINUM, 4.85 METER
1	EACH	STEEL MAST ARM ASSEMBLY AND POLE, 8.53 METER
1	EACH	STEEL MAST ARM ASSEMBLY AND POLE, 9.14 METER
2	EACH	STEEL MAST ARM ASSEMBLY AND POLE, 14.02 METER
3.6	METER	CONCRETE FOUNDATION, TYPE A
1	METER	CONCRETE FOUNDATION, TYPE C
8.2	METER	CONCRETE FOUNDATION, TYPE E, 750MM DIAMETER
8	METER	CONCRETE FOUNDATION, TYPE E, 900MM DIAMETER
1	EACH	DRILL EXISTING HANDHOLE
4	EACH	SIGNAL HEAD, POLYCARBONATE, LED, 1-FACE, 3-SECTION, BRACKET MOUNTED
4	EACH	SIGNAL HEAD, POLYCARBONATE, LED, 1-FACE, 3-SECTION, MAST ARM MOUNTED
2	EACH	SIGNAL HEAD, POLYCARBONATE, LED, 1-FACE, 4-SECTION, MAST ARM MOUNTED
2	EACH	SIGNAL HEAD, POLYCARBONATE, LED, 1-FACE, 5-SECTION, MAST ARM MOUNTED
2	EACH	SIGNAL HEAD, POLYCARBONATE, LED, 2-FACE, 1-3 SECTION, 1-4 SECTION, BRACKET MOUNTED
2	EACH	SIGNAL HEAD, POLYCARBONATE, LED, 2-FACE, 1-3 SECTION, 1-5 SECTION, BRACKET MOUNTED
4	EACH	PEDESTRIAN SIGNAL HEAD, POLYCARBONATE, LED, 2-FACE, BRACKET MOUNTED WITH COUNTDOWN TIMER
20	EACH	TRAFFIC SIGNAL BACKPLATE
8	EACH	PEDESTRIAN PUSH-BUTTON
1	EACH	MODIFY EXISTING CONTROLLER
4	EACH	CAMERA MOUNTING ASSEMBLY
1	EACH	VIDEO VEHICLE DETECTION SYSTEM



USER NAME = Plotted by Scott	DESIGNED -	REVISED -	<p align="center"><b>STATE OF ILLINOIS</b> <b>DEPARTMENT OF TRANSPORTATION</b></p> <p align="center"><b>PROPOSED TRAFFIC SIGNAL PLAN</b> <b>DIRKSEN PKWY. &amp; ELM ST.</b></p>	F.A.P. RTE. 668	SECTION 28R-1	COUNTY SANGAMON	TOTAL SHEETS 354	SHEET NO. 156		
PLOT SCALE = 12.692 m / in.	DRAWN -	REVISED -		SCALE:	SHEET	OF	SHEETS	STA.	TO	STA.
PLOT DATE =	CHECKED -	REVISED -								
	DATE -	REVISED -								
							CONTRACT NO. 72501		[ILLINOIS] FED. AID PROJECT	