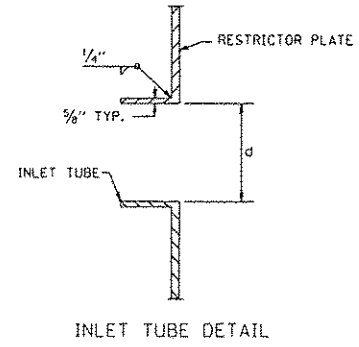
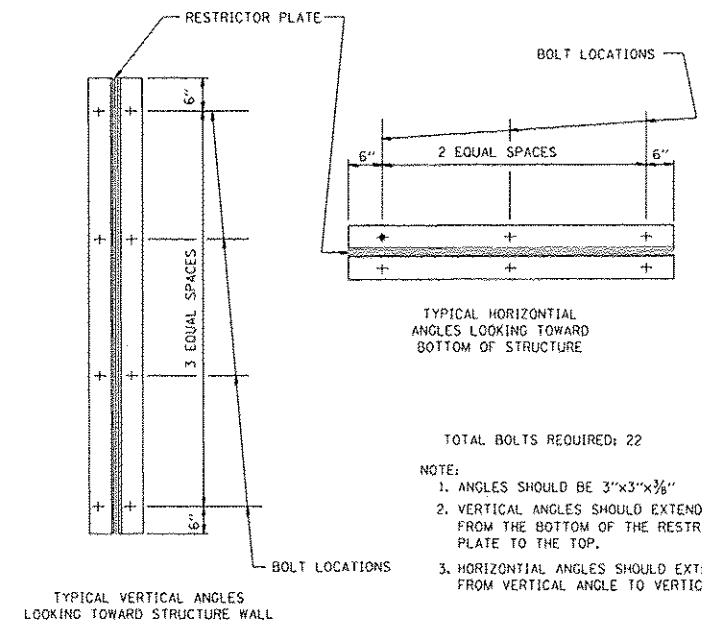


- NOTES:
1. ALL STEEL ANGLES AND PLATES TO BE GALVANIZED AFTER FABRICATION.
  2. ALL RESTRICTOR PLATES, ANGLES AND HARDWARE TO BE INCLUDED IN THE COST OF THE STRUCTURE.



| RESTRICTOR STRUCTURE NO. | STATION/OFFSET             | STRUCTURE DIAMETER | FRAME AND GRATE | RESTRICTOR TYPE | INSIDE RESTRICTOR TYPE DIAMETER | INVERT OF RESTRICTOR TYPE | ELEVATION OF TOP OF PLATE OVERFLOW |
|--------------------------|----------------------------|--------------------|-----------------|-----------------|---------------------------------|---------------------------|------------------------------------|
| 1                        | STA. 5+925.00; O/S 13.7 LT | 2.1 M              | CLOSED LID      | TYPE 6          | 300 MM                          | 177.52                    | 178.72                             |
| 2                        | STA. 5+925.00; O/S 15.2 RT | 2.7 M              | CLOSED LID      | TYPE 6          | 250 MM                          | 177.52                    | 178.72                             |
| 3                        | STA. 6+172.26; O/S 12.6 LT | 1.2 M              | CLOSED LID      | TYPE 6          | 150 MM                          | 179.05                    | 179.65                             |
| 4                        | STA. 6+200.00; O/S 12.6 LT | 1.5 M              | CLOSED LID      | TYPE 6          | 175 MM                          | 179.12                    | 179.72                             |
| 5                        | STA. 6+187.50; O/S 10.2 RT | 1.5 M              | CLOSED LID      | TYPE 6          | 200 MM                          | 179.00                    | 179.75                             |
| 6                        | STA. 6+172.26; O/S 10.2 RT | 1.2 M              | CLOSED LID      | TYPE 6          | 150 MM                          | 178.97                    | 179.57                             |

BASIS OF PAYMENT: CONTROL STRUCTURE, RESTRICTOR PLATE WITH THE FRAME AND GRATE AND DIAMETER SPECIFIED.



- TOTAL BOLTS REQUIRED: 22
- NOTE:
1. ANGLES SHOULD BE 3"x3"x3/8"
  2. VERTICAL ANGLES SHOULD EXTEND FROM THE BOTTOM OF THE RESTRICTOR PLATE TO THE TOP.
  3. HORIZONTAL ANGLES SHOULD EXTEND FROM VERTICAL ANGLE TO VERTICAL ANGLE.

| RESTRICTOR TYPE       |             |                     |                    |                    |         |
|-----------------------|-------------|---------------------|--------------------|--------------------|---------|
| 1                     | 2           | 3                   | 4                  | 5                  | 6       |
| RE-ENTRANT TUBE       | SHARP EDGED | SQUARE EDGED        | RE-ENTRANT TUBE    | SQUARE EDGED       | ROUNDED |
|                       |             |                     |                    |                    |         |
| LENGTH: 1/2 TO 1 DIA. |             | STREAM CLEARS SIDES | LENGTH: 2-1/2 DIA. | LENGTH: 2-1/2 DIA. |         |
| C=.52                 | C=.61       | C=.61               | C=.73              | C=.82              | C=.98   |

VALUES OF "C" FOR CIRCULAR AND SQUARE ORIFICES

ALL DIMENSIONS ARE IN INCHES UNLESS OTHERWISE SHOWN.

ILLINOIS DEPARTMENT OF TRANSPORTATION

CONTROL STRUCTURE WITH RESTRICTOR PLATE

F.A.P. ROUTE 668 (DIRKSEN PARKWAY)  
SECTION 28R-1  
SANGAMON COUNTY

| REVISIONS |      |
|-----------|------|
| NAME      | DATE |
|           |      |
|           |      |
|           |      |