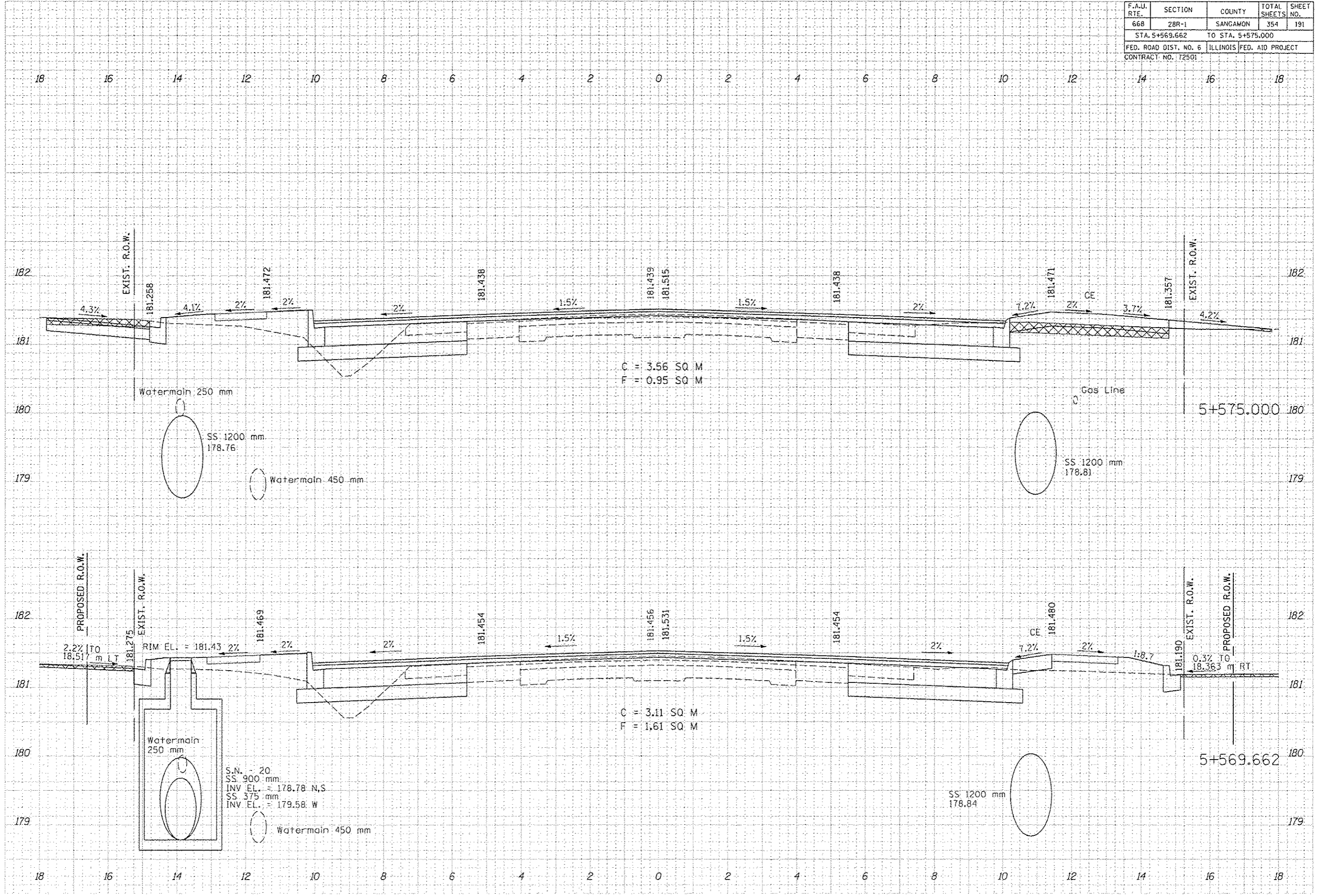


F.A.U. RTE.	SECTION	COUNTY	TOTAL SHEETS	SHEET NO.
66B	28R-1	SANGAMON	354	191
STA. 5+569.662		TO STA. 5+575.000		
FED. ROAD DIST. NO. 6		ILLINOIS FED. AID PROJECT		
CONTRACT NO. 172501				

FINAL SURVEY	BY	DATE
SUBMITTED		
PLOTTED		
TEMPLATE		
NOTE BOOK		
AS SHOWN		
AS CHECKED		

ORIGINAL SURVEY	BY	DATE
SUBMITTED		
PLOTTED		
TEMPLATE		
NOTE BOOK		
AS SHOWN		
AS CHECKED		



C = 3.56 SQ M  
F = 0.95 SQ M

C = 3.11 SQ M  
F = 1.61 SQ M

S.N. - 20  
SS 900 mm  
INV EL. = 178.78 N,S  
SS 375 mm  
INV EL. = 179.58 W

SS 1200 mm  
178.84