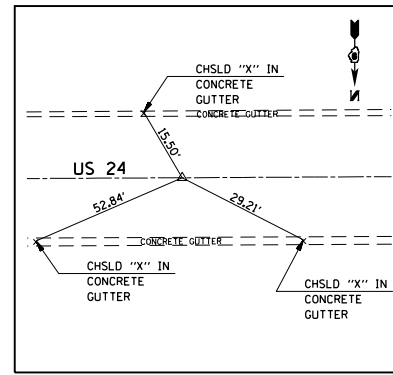
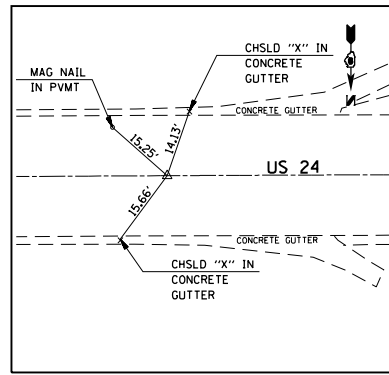


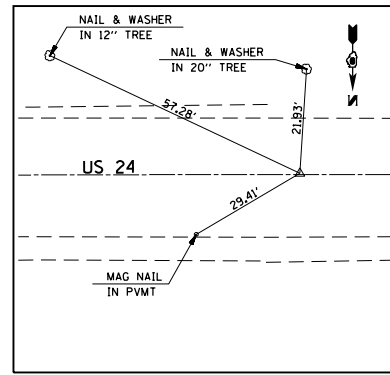
BM *CB-2: STA. 2255+48.0, 34.0' LT
 CHISLED "X" ON SOUTH HEADWALL
 JUST W OF N 48TH ST & US 24 INT
 ELEV. = 669.12



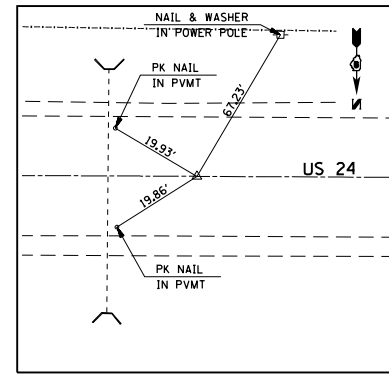
P.O.T. STA. 2250+00.00
 (SET P.K. NAIL IN CHSLD "X")



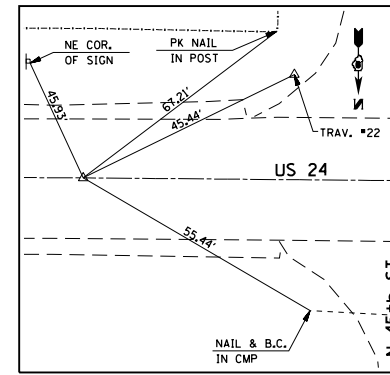
P.C. STA. 2253+00.00
 (SET P.K. NAIL IN CHSLD "X")



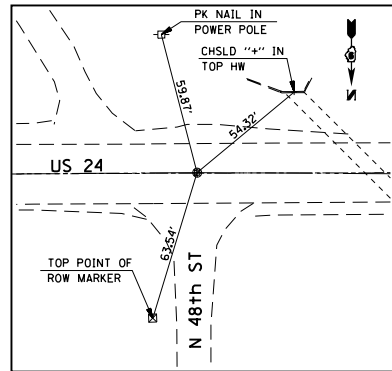
P.I. STA. 2258+00.00
 (SET P.K. NAIL IN CHSLD "X")



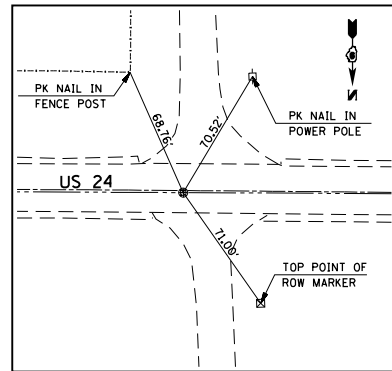
P.T. STA. 2262+99.99
 (SET P.K. NAIL IN CHSLD "X")



P.I. STA. 2268+00.00
 (SET P.K. NAIL IN CHSLD "X")

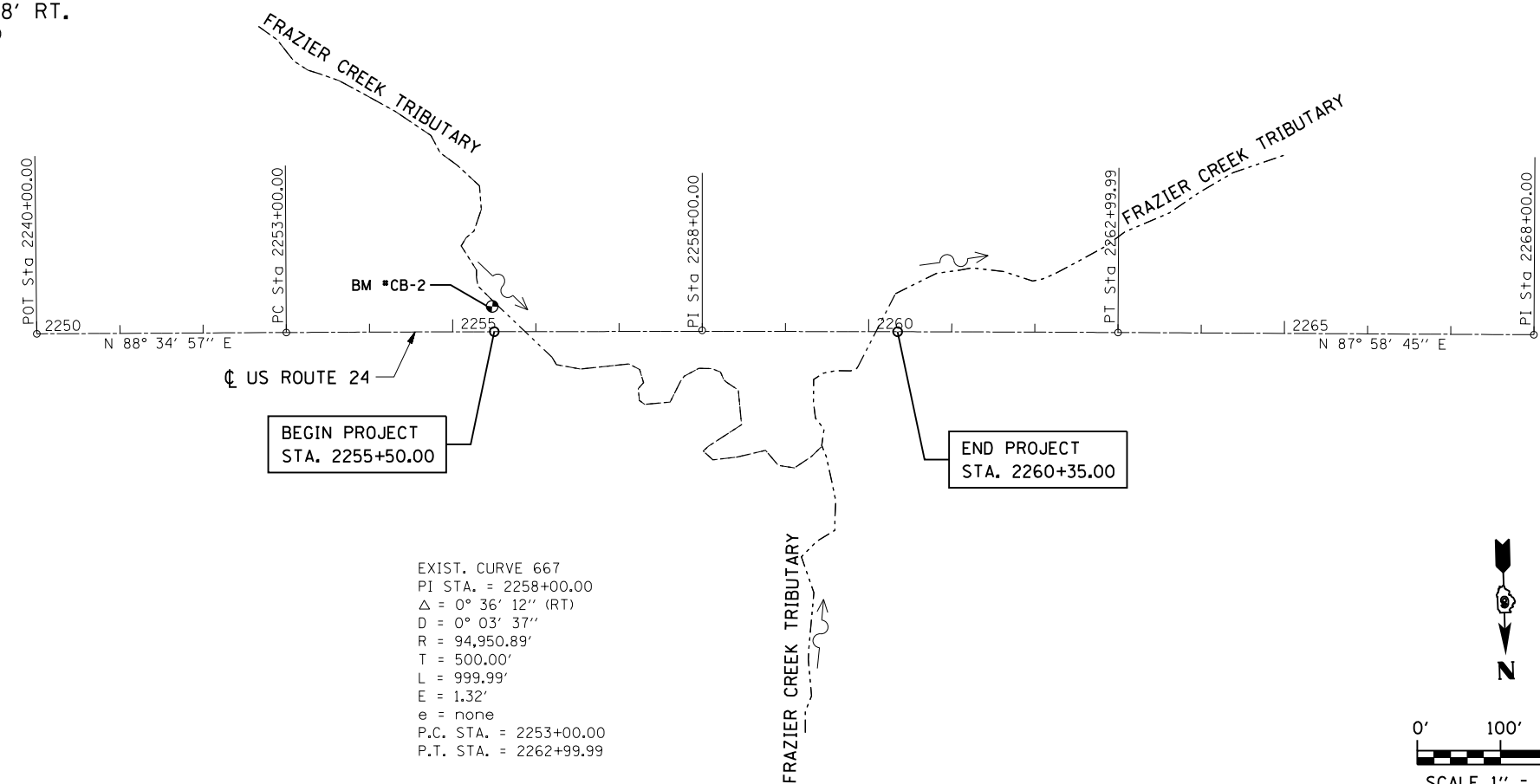


NE COR, SEC 8, T1S, R8W, 4TH PM
 STA. 2255+11.79, 0.52' LT.
 (MAG NAIL SET FLUSH)



NW COR, NE 1/4, NE 1/4, SEC 8, T1S, R8W, 4TH PM
 STA. 2268+57.02, 2.18' RT.
 (MAG NAIL SET FLUSH)

ALIGNMENT COORDINATES - US 24			
	STATION	N	E
POT	2250+00.00	1,218,851.4223	1,968,867.8487
PC	2253+00.00	1,218,858.8432	1,968,567.9406
PI	2258+00.00	1,218,871.2112	1,968,068.0936
PT	2262+99.99	1,218,888.8427	1,967,568.4046
PI	2268+00.00	1,218,906.4745	1,967,068.7065



BEGIN PROJECT
 STA. 2255+50.00

END PROJECT
 STA. 2260+35.00

EXIST. CURVE 667
 PI STA. = 2258+00.00
 $\Delta = 0^\circ 36' 12''$ (RT)
 $D = 0^\circ 03' 37''$
 $R = 94,950.89'$
 $T = 500.00'$
 $L = 999.99'$
 $E = 1.32'$
 $e = \text{none}$
 P.C. STA. = 2253+00.00
 P.T. STA. = 2262+99.99

