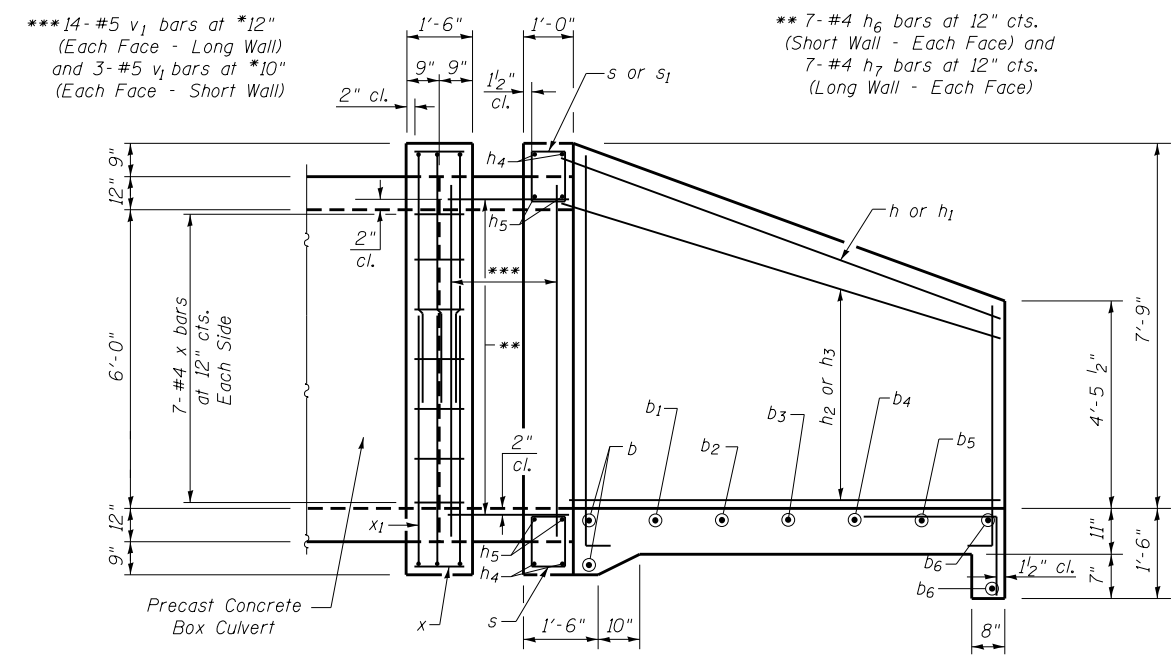


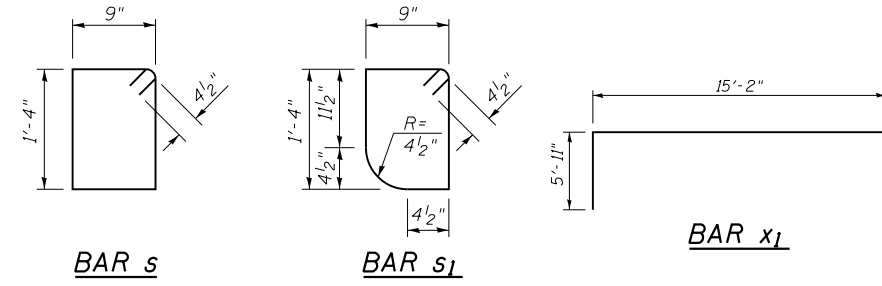
END ELEVATION



SECTION A-A

NOTES:

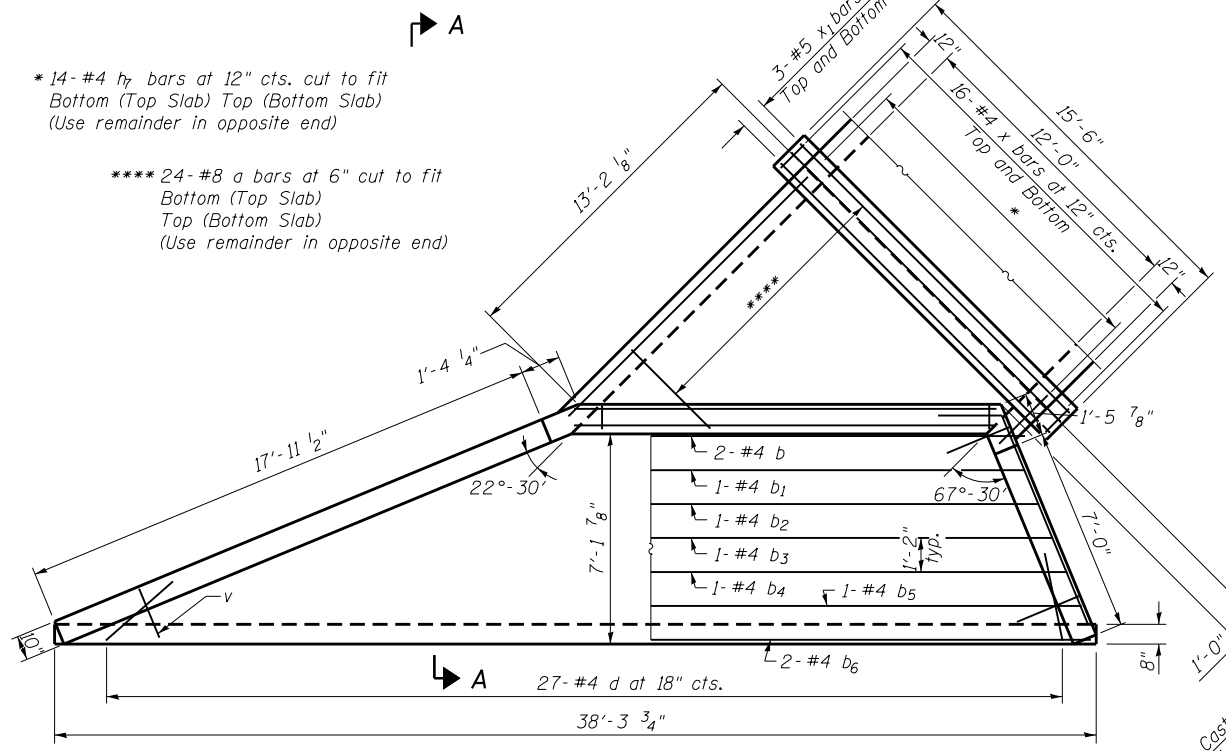
- Bill of Material for 2 end sections.
- Bar dimensions are out to out.
- Not to scale or proper orientation.
- Exposed edges shall be beveled $\frac{3}{4}$ ".
- Reinforcement bars shall conform to the requirements of ASTM A706 Gr 60. See Special Provisions.
- Headwall at 45° skew to culvert C .
- Minimum bar laps: #5 bar = 2'-2"



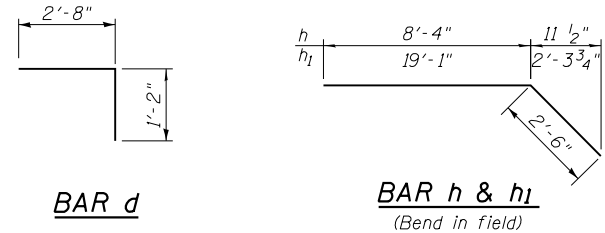
BAR s

BAR s1

BAR x1

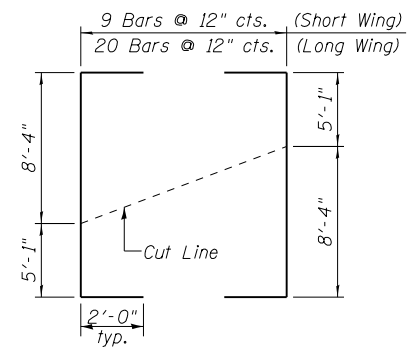


PLAN

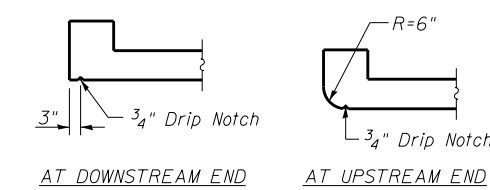


BAR d

BAR h & h1
(Bend in field)



FIELD CUTTING DIAGRAM
BAR v



SECTION THRU HEADWALL

BILL OF MATERIAL

Bar	No.	Size	Length	Shape	
a	48	#8	13'-8"	—	
b	4	#4	19'-10"	—	
b1	2	#4	23'-1"	—	
b2	2	#4	26'-3"	—	
b3	2	#4	29'-6"	—	
b4	2	#4	32'-8"	—	
b5	2	#4	35'-10"	—	
b6	4	#4	38'-0"	—	
d	54	#4	3'-1"	└	
h	2	#4	10'-10"	└	
h1	2	#4	21'-7"	└	
h2	8	#4	8'-2"	—	
h3	8	#4	19'-0"	—	
h4	8	#6	17'-1"	—	
h5	8	#8	17'-1"	—	
h6	28	#4	1'-10"	—	
h7	56	#4	13'-9"	—	
s	54	#4	4'-11"	□	
s1	18	#4	4'-9"	□	
v	29	#5	17'-5"	└	
v1	68	#5	7'-8"	—	
x	92	#4	1'-2"	—	
x1	12	#5	27'-0"	└	
Reinforcement Bars				Pound	5,190

DESIGNED - RJP
CHECKED - ADL
DRAWN - RJP
CHECKED - ADL

EXAMINED
PASSED
ENGINEER OF BRIDGE DESIGN
ENGINEER OF BRIDGES AND STRUCTURES

DATE -
REVISED - SEB 10-25-13
REVISED

STATE OF ILLINOIS
DEPARTMENT OF TRANSPORTATION

CULVERT DETAILS
STRUCTURE NUMBER 001-7130

SHEET NO. 3 OF 6 SHEETS

F.A.P. RTE. 63 SECTION (1)CR-1, (2)CR COUNTY ADAMS TOTAL SHEETS 43 SHEET NO. 24 CONTRACT NO. 72C12