

PART A

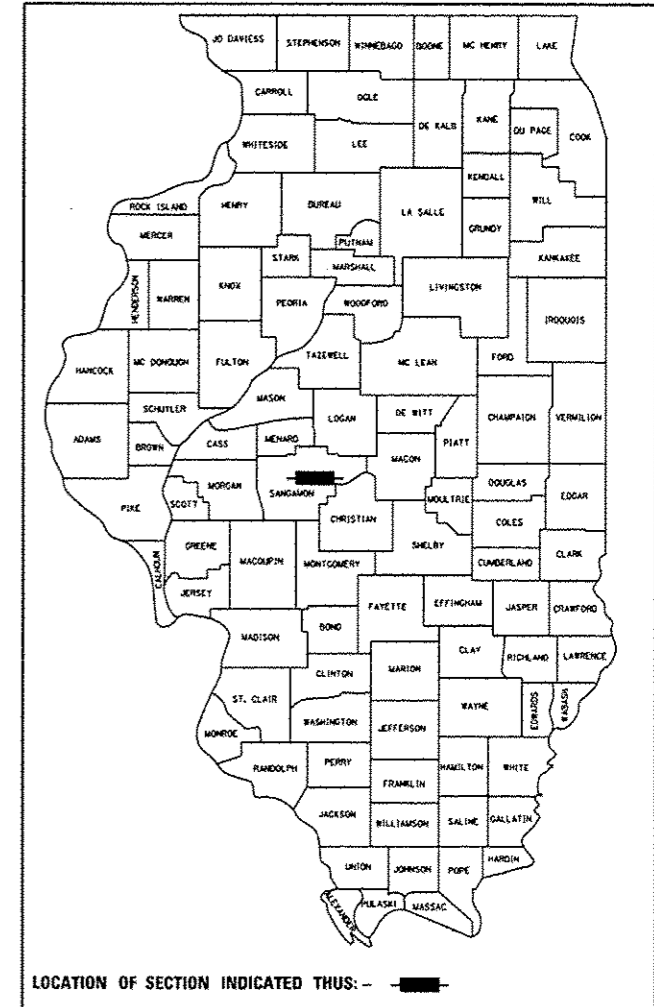
STATE OF ILLINOIS
DEPARTMENT OF TRANSPORTATION
DIVISION OF HIGHWAYS

**PROPOSED
HIGHWAY PLANS**

FAI 72 (I-72)
SECTION (84-10-1)RS-3, (84-10-2)RS-4
PROJECT
HMA RESURFACING
SANGAMON COUNTY

F.A.I. RTE.	SECTION	COUNTY	TOTAL SHEETS	SHEET NO.
I-72	*	SANGAMON	194	14
*(84-10-1)RS-3, (84-10-2)RS-4			ILLINOIS CONTRACT NO. 72C90	

D-96-085-09 PART "A" SHEET 1 OF 45



STATE OF ILLINOIS
DEPARTMENT OF TRANSPORTATION
DIVISION OF HIGHWAYS

SUBMITTED _____ 20 _____
DEPUTY DIRECTOR OF HIGHWAYS, REGION ENGINEER

_____ 20 _____
ENGINEER OF DESIGN AND ENVIRONMENT

_____ 20 _____
DIRECTOR OF HIGHWAYS, CHIEF ENGINEER

**PRINTED BY THE AUTHORITY
OF THE STATE OF ILLINOIS**

DATE: _____
LICENSE EXP. 11/30/2013

**HOELSCHER
ENGINEERING**

11 Executive Drive Suite 12
Fairview Heights, Illinois 62208
(618) 624-8610
(618) 624-8611 (fax)

2501 Chatham Road, Suite 120
Springfield, Illinois 62704
(217) 698-8610
(217) 698-8608 (fax)

INDEX OF SHEETS

- 1 COVER SHEET
- 2 GENERAL NOTES AND COMMITMENTS
- 3-4 SUMMARY OF QUANTITIES
- 5-7 TYPICAL SECTIONS
- 8-15 SCHEDULES
- 16-40 PLAN SHEETS
- 41-42 SUPERELEVATION DETAILS
- 43-44 BUTT JOINT AND HMA RAMP DETAILS
- 45 EMERGENCY CROSSOVER DETAILS

HIGHWAY STANDARDS

000001-06	701401-07
001001-02	701406-07
001006	701411-08
442001-04	701421-05
442101-07	701422-05
635001-01	701446-04
642001-02	701456-02
701101-03	701901-02
701106-02	780001-03
701400-06	781001-03

SN 084-0154
STA. 299 + 80.31 TR 420 =
STA. 269 + 23.08 FAI 72

BRIDGE OMISSION:
SN 084-0152 WB STA. 193 + 08.04 TO
STA. 201 + 56.86 FAI 72
SN 084-0153 EB STA. 193 + 22.30 TO
STA. 201 + 41.12 FAI 72
OVER SANGAMON RIVER

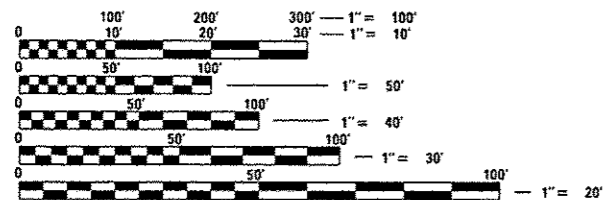
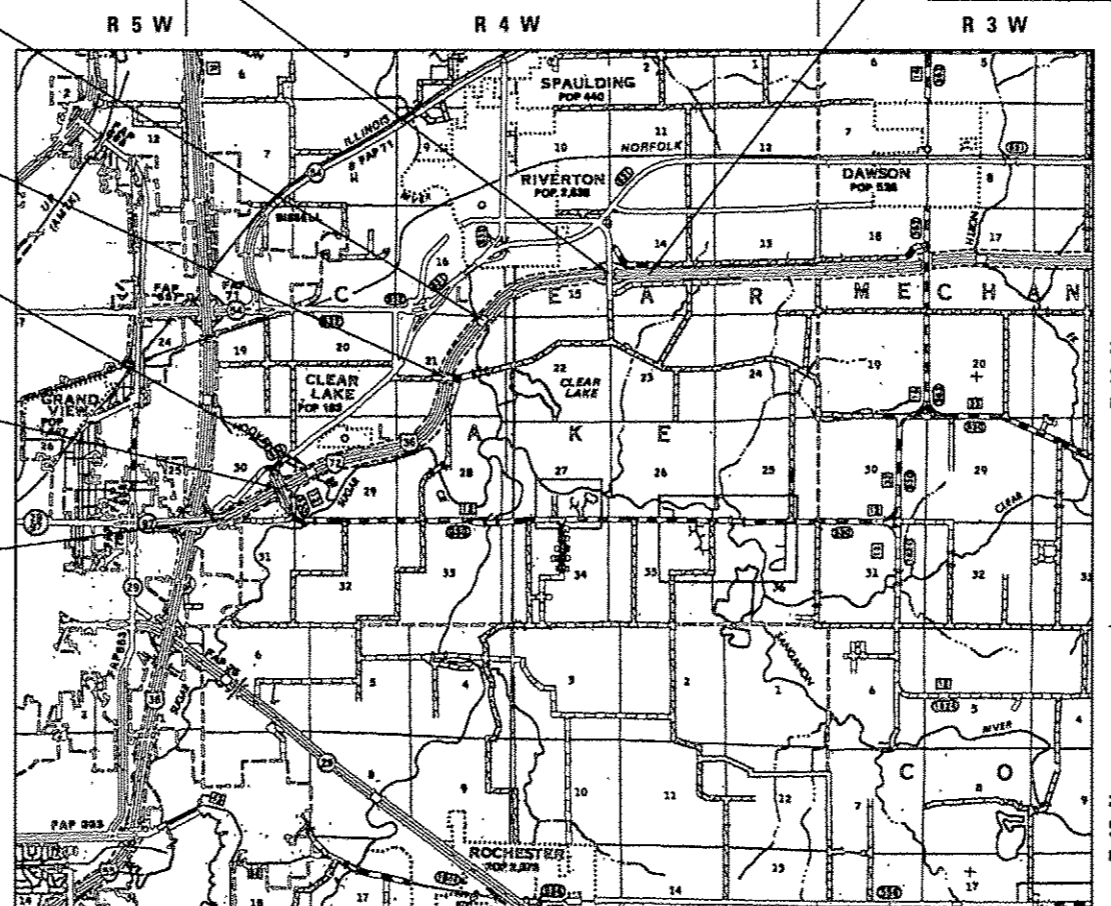
SN 084-0151
STA. 200 + 00.00 TR 171 =
STA. 161 + 04.98 FAI 72

SN 084-2011
EXIST. BOX CULV.
STA. 68 + 55.02

SN 084-0150
STA. 100 + 01.88 MECHANICSBURG RD. =
STA. 48 + 76.46 FAI 72

BEGIN IMPROVEMENT
I-72 STA. 13 + 32.00 EB
STA. 15 + 40.00 WB

END IMPROVEMENT I-72
STA. EQ. STA. 295 + 70.43 (BK) =
STA. 0 + 00.00 (AH)



FULL SIZE PLANS HAVE BEEN PREPARED USING STANDARD ENGINEERING SCALES. REDUCED SIZED PLANS WILL NOT CONFORM TO STANDARD SCALES. IN MAKING MEASUREMENTS ON REDUCED PLANS, THE ABOVE SCALES MAY BE USED.

J.U.L.I.E.
JOINT UTILITY LOCATION INFORMATION FOR EXCAVATION
1-800-892-0123
OR 811

PROJECT ENGINEER: **WARR MADANAR** (217) 757-8240
PROJECT MANAGER: **WOTOR MADANAR** (217) 757-8380
CONTRACT NO. 72C90

FAI 72
FUNCTION CLASS = INTERSTATE
A.D.T. (2012) 13,500
SU (2012) 610
MU (2012) 1,430
PV (2012) 11,460

NET LENGTH OF FAI 72 = 27,389.61 FT = 5.187 MILES
TOTAL LENGTH OF PROJECT = 27,389.61 FT = 5.187 MILES