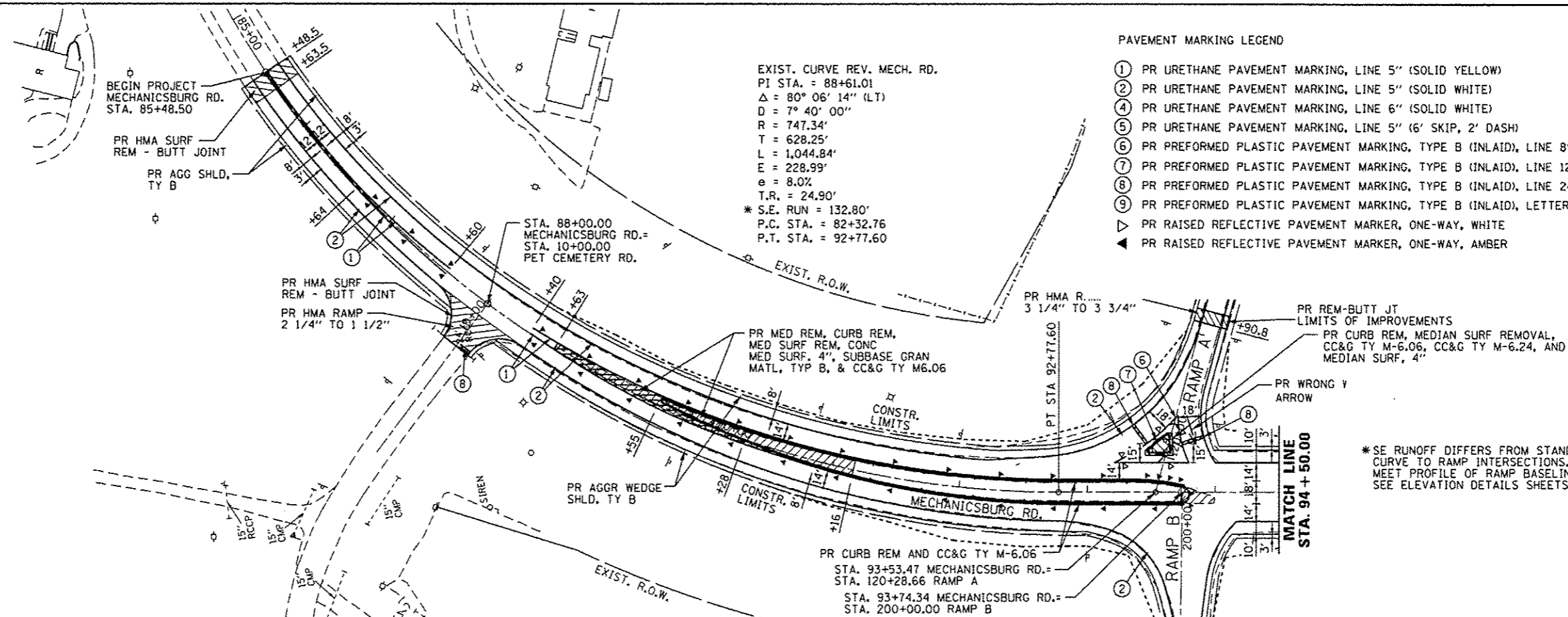




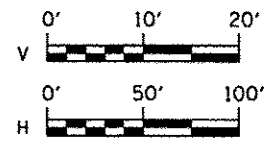
PAVEMENT MARKING LEGEND

- ① PR URETHANE PAVEMENT MARKING, LINE 5" (SOLID YELLOW)
- ② PR URETHANE PAVEMENT MARKING, LINE 5" (SOLID WHITE)
- ④ PR URETHANE PAVEMENT MARKING, LINE 6" (SOLID WHITE)
- ⑤ PR URETHANE PAVEMENT MARKING, LINE 5" (6' SKIP, 2' DASH)
- ⑥ PR PREFORMED PLASTIC PAVEMENT MARKING, TYPE B (INLAID), LINE 8" (SOLID WHITE)
- ⑦ PR PREFORMED PLASTIC PAVEMENT MARKING, TYPE B (INLAID), LINE 12" (SOLID WHITE)
- ⑧ PR PREFORMED PLASTIC PAVEMENT MARKING, TYPE B (INLAID), LINE 24" (SOLID WHITE)
- ⑨ PR PREFORMED PLASTIC PAVEMENT MARKING, TYPE B (INLAID), LETTERS & SYMBOLS (SOLID WHITE)
- ▽ PR RAISED REFLECTIVE PAVEMENT MARKER, ONE-WAY, WHITE
- ▲ PR RAISED REFLECTIVE PAVEMENT MARKER, ONE-WAY, AMBER

EXIST. CURVE REV. MECH. RD.
 PI STA. = 88+61.01
 $\Delta = 80^{\circ} 06' 14''$ (LT)
 $D = 7^{\circ} 40' 00''$
 $R = 747.34'$
 $T = 628.25'$
 $L = 1,044.84'$
 $E = 228.99'$
 $e = 8.0\%$
 $T.R. = 24.90'$
 $* S.E. RUN = 132.80'$
 $P.C. STA. = 82+32.76$
 $P.T. STA. = 92+77.60$

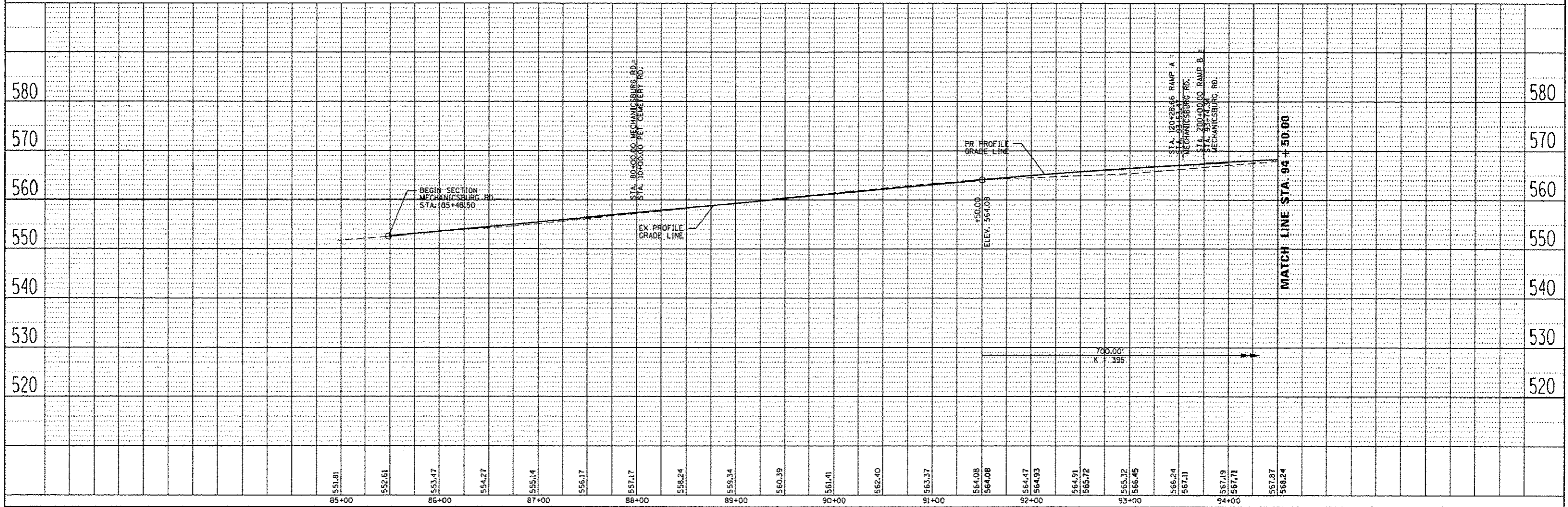


* SEE RUNOFF DIFFERS FROM STANDARD DUE TO PROXIMITY OF CURVE TO RAMP INTERSECTIONS. CROSS SLOPE OF CH 12 TO MEET PROFILE OF RAMP BASELINE AT STA. 92+77.60 CH 12. SEE ELEVATION DETAILS SHEETS FOR TRANSITION ELEVATIONS.



DATE	
BY	
REVISION	
NO.	
DATE	
BY	
REVISION	
NO.	

DATE	
BY	
REVISION	
NO.	
DATE	
BY	
REVISION	
NO.	



USER NAME = sparkgw	DESIGNED - BTM	REVISED -	STATE OF ILLINOIS DEPARTMENT OF TRANSPORTATION	PLAN & PROFILE SHEETS CH 12 (MECHANICSBURG RD.)		F.A.I. RTE.	SECTION	COUNTY	TOTAL SHEETS	SHEET NO.
PLT SCALE = 1/8" = 1'-0"	DRAWN - BTM	REVISED -		SCALE:	SHEET NO.	OF SHEETS	1-72	SANGAMON	194	86
PLT DATE = Sep-06-2013 09:12:56AM	CHECKED - JSA	REVISED -		STA. 85+48.50 TO STA. 94+50.00			CONTRACT NO. 72C90			
	DATE - 9/20/12	REVISED -				ILLINOIS FED. AID PROJECT				

FILE NAME = c:\pwworkspace\sparkgw\d0359822\0672C90_sht.prof ch12 01.dgn