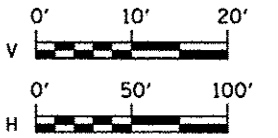
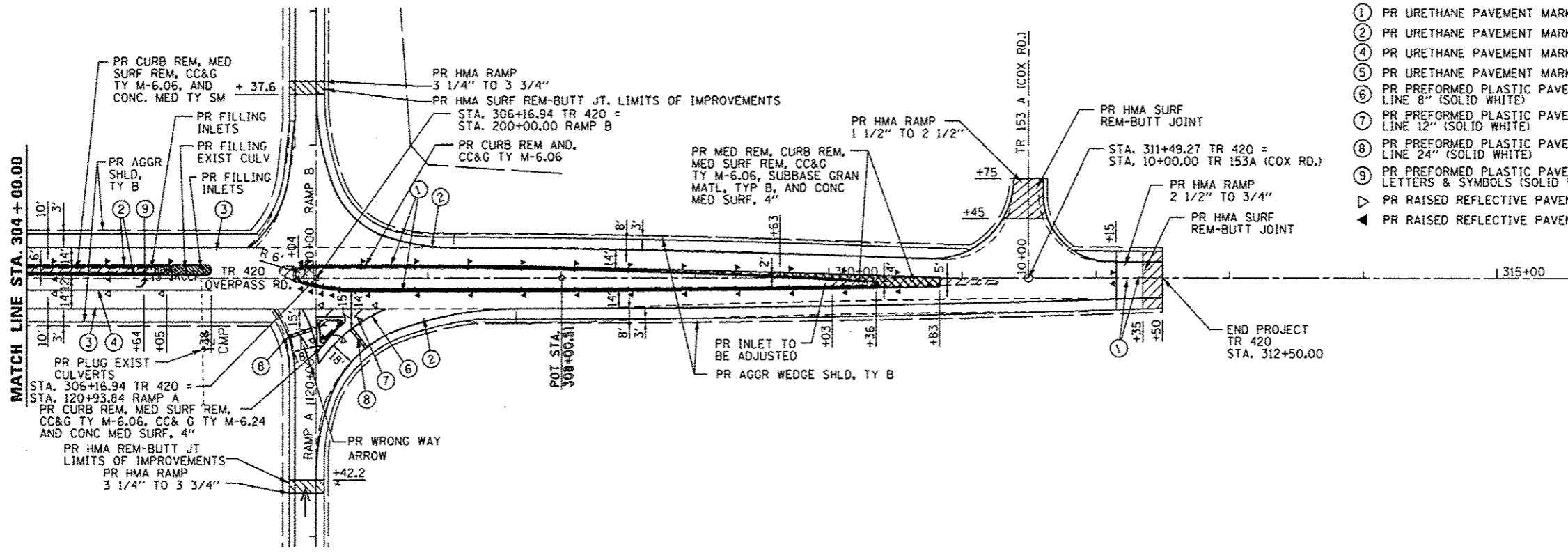


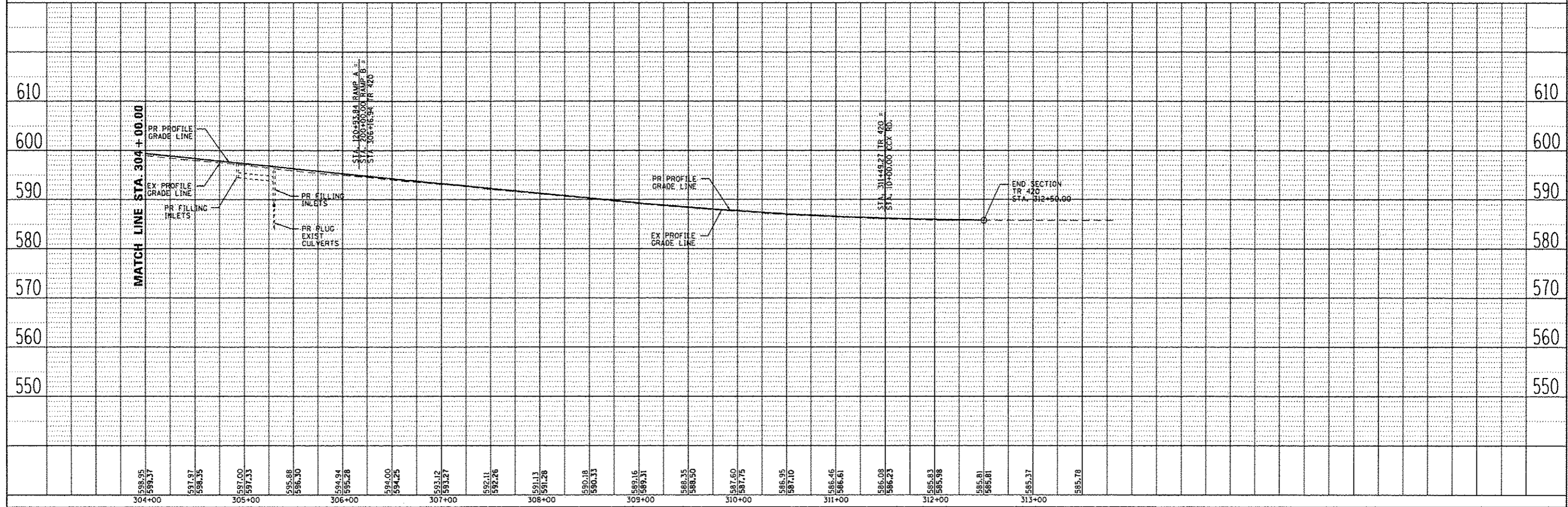
PAVEMENT MARKING LEGEND

- ① PR URETHANE PAVEMENT MARKING, LINE 5" (SOLID YELLOW)
- ② PR URETHANE PAVEMENT MARKING, LINE 5" (SOLID WHITE)
- ④ PR URETHANE PAVEMENT MARKING, LINE 6" (SOLID WHITE)
- ⑤ PR URETHANE PAVEMENT MARKING, LINE 5" (6' SKIP, 2' DASH)
- ⑥ PR PREFORMED PLASTIC PAVEMENT MARKING, TYPE B (INLAID), LINE 8" (SOLID WHITE)
- ⑦ PR PREFORMED PLASTIC PAVEMENT MARKING, TYPE B (INLAID), LINE 12" (SOLID WHITE)
- ⑧ PR PREFORMED PLASTIC PAVEMENT MARKING, TYPE B (INLAID), LINE 24" (SOLID WHITE)
- ⑨ PR PREFORMED PLASTIC PAVEMENT MARKING, TYPE B (INLAID), LETTERS & SYMBOLS (SOLID WHITE)
- ▽ PR RAISED REFLECTIVE PAVEMENT MARKER, ONE-WAY, WHITE
- ▲ PR RAISED REFLECTIVE PAVEMENT MARKER, ONE-WAY, AMBER



DATE	
BY	
REVISION	
NO.	
DATE	
BY	
REVISION	
NO.	

DATE	
BY	
REVISION	
NO.	
DATE	
BY	
REVISION	
NO.	



304+00	598.95	599.37	305+00	597.97	598.35	597.00	597.33	595.88	596.30	306+00	594.94	595.28	594.00	594.25	307+00	593.12	593.27	592.11	592.26	308+00	591.13	591.28	590.18	590.33	309+00	589.16	589.31	588.35	588.50	310+00	587.60	587.75	586.95	587.10	311+00	586.46	586.61	586.08	586.23	312+00	585.83	585.98	585.81	585.96	585.37	585.78
--------	--------	--------	--------	--------	--------	--------	--------	--------	--------	--------	--------	--------	--------	--------	--------	--------	--------	--------	--------	--------	--------	--------	--------	--------	--------	--------	--------	--------	--------	--------	--------	--------	--------	--------	--------	--------	--------	--------	--------	--------	--------	--------	--------	--------	--------	--------

USER NAME = sparkgw	DESIGNED - BTM	REVISED -
PLOT SCALE = 1/800000	DRAWN - BTM	REVISED -
PLOT DATE = Sep-05-2013 09:41:49AM	CHECKED - JSA	REVISED -
	DATE - 9/20/12	REVISED -

STATE OF ILLINOIS
DEPARTMENT OF TRANSPORTATION

PLAN & PROFILE SHEETS
TR 420 (OVERPASS RD.)

SCALE:	SHEET NO.	OF	SHEETS	STA.	TO	STA.
--------	-----------	----	--------	------	----	------

F.A.I. RTE.	SECTION	COUNTY	TOTAL SHEETS	SHEET NO.
1-72		SANGAMON	194	91
• (84-10-1RS-3,84-10-2RS-4)BR,I CONTRACT NO. 72C90				
ILLINOIS FED. AID PROJECT				

FILE NAME: c:\pwworkspace\sparkgw\d08359822\0672C90.sht_prof_v428_03.dgn