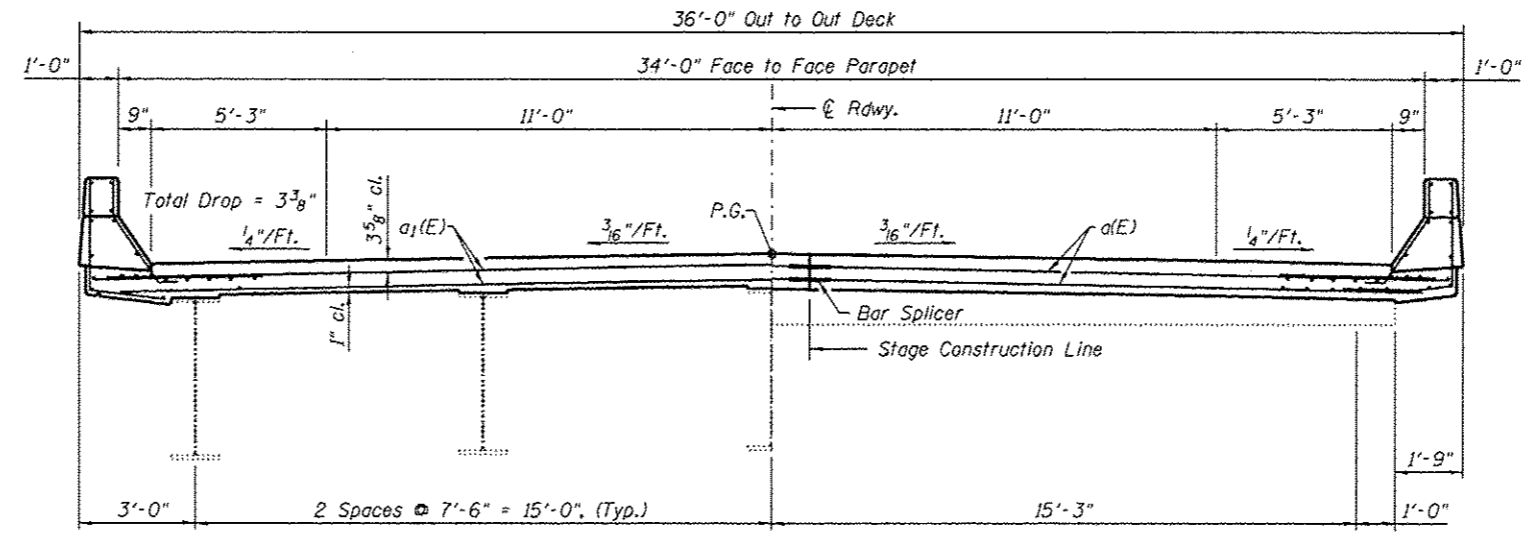
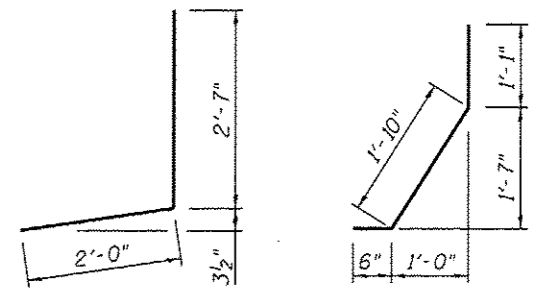


SECTION D-D
(Showing Parapet at Superstructure.
Horizontal dimensions at Rt. L's)

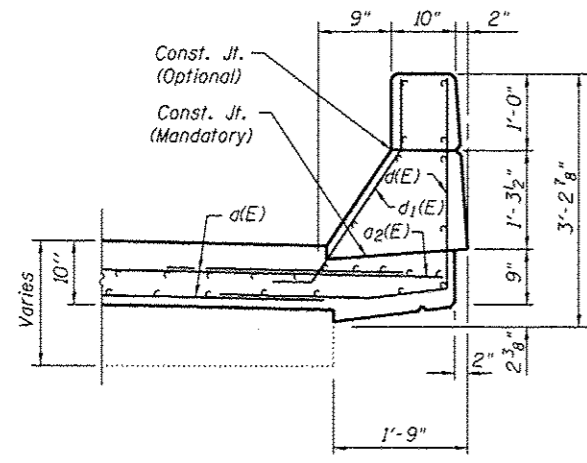


ON DECK SIDE **ON APPROACH SIDE**

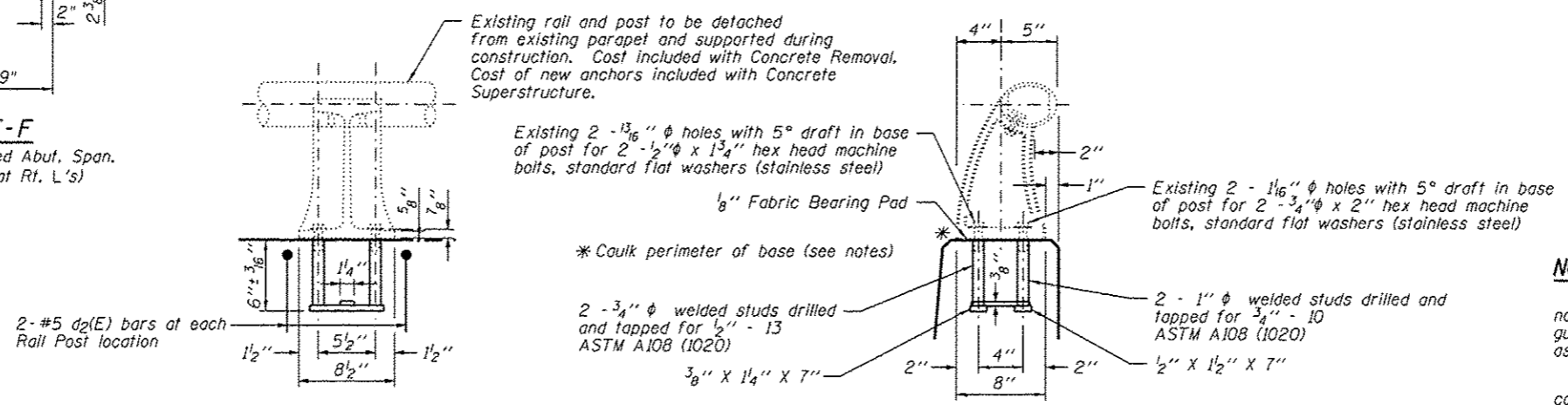
SECTION E-E



BAR d(E) **BAR d1(E)**
BAR d2(E)



SECTION F-F
(Showing Parapet at Vaulted Abut. Span.
Horizontal dimensions at Rt. L's)



RAIL POST DETAIL

(Rail posts to be removed and re-erected at W. Abutment only. Two (2) new anchors required.)

BILL OF MATERIAL
(Two abutments)

Bar	No.	Size	Length	Shape
d(E)	20	#5	16'-11"	—
a1(E)	20	#5	19'-0"	—
a2(E)	12	#6	4'-0"	—
d(E)	16	#4	4'-7"	—
d1(E)	16	#5	3'-5"	—
a2(E)	4	#5	2'-1"	—
Concrete Removal		Cu. Yd.	5.4	
Concrete Superstructure		Cu. Yd.	5.4	
Reinforcement Bars, Epoxy Coated		Pound	1,330	
Bar Splicers		Each	20	
Protective Coat		Sq. Yd.	26.0	

NOTES:

- Seal perimeter of base of post to parapet with two-component non-staining gray sealing compound with polysulfide liquid polymers, gun grade, with primer. Fabric bearing pad shall have same dimensions as base of post.
 - Existing reinforcement shall be cleaned and incorporated into the new construction, as noted. Cost included with Concrete Removal.
 - Any Reinforcement bars that are damaged during concrete removal operations shall be repaired or replaced using an approved bar splicer or anchorage system. Cost included with Concrete Removal.
 - Removal of all existing expansion joints shall be included in the cost of Concrete Removal.
- Work this sheet with sheet 3 of 8.