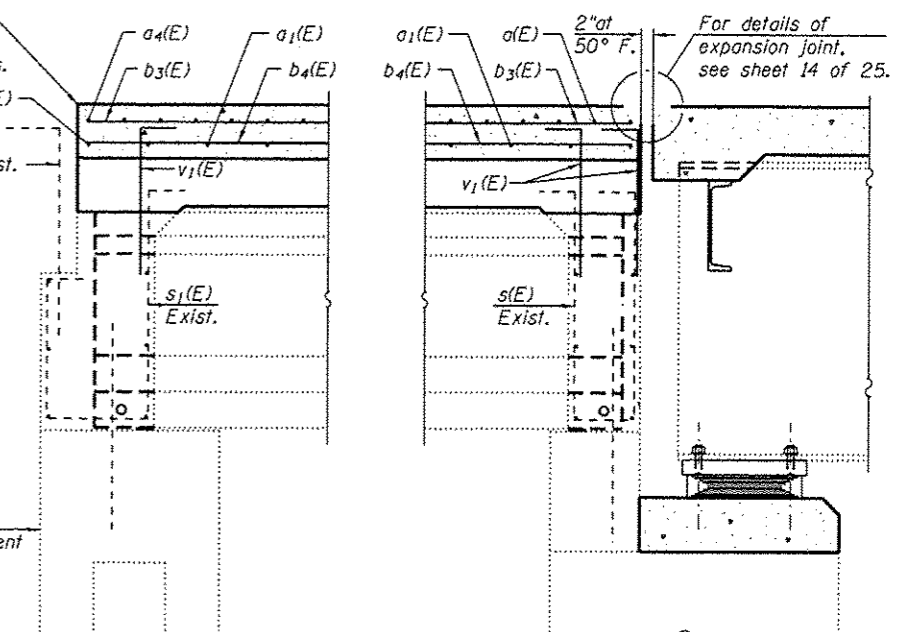
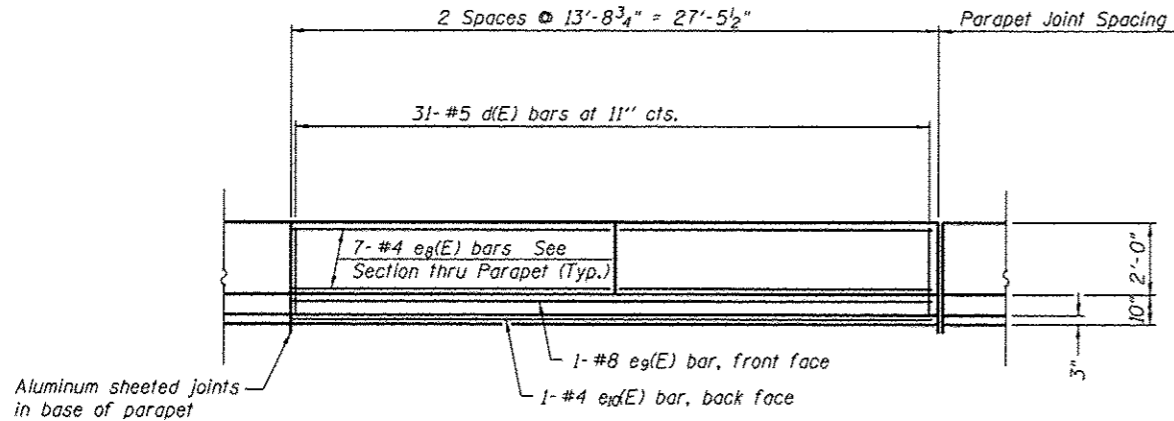


PART "B" SHEET 99 OF 136

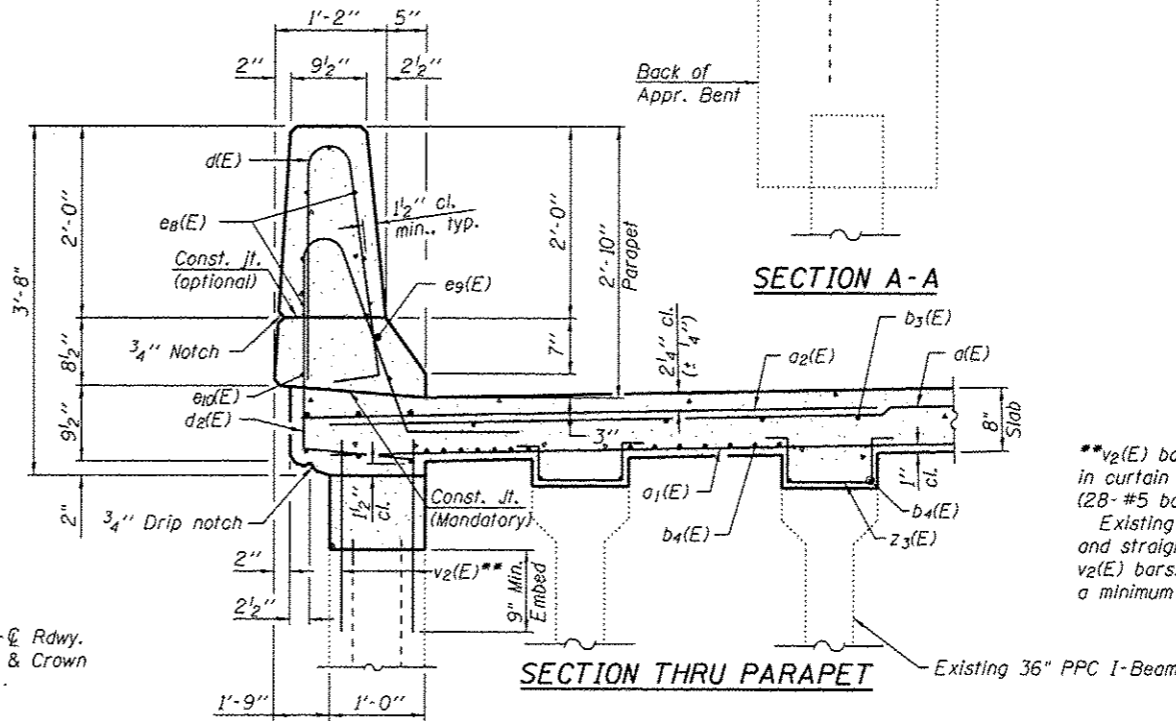
1/4" x 3/4" Formed Joint with bridge relief joint sealer (full width) See Special Provisions.



Note: Contractor shall exercise extreme care while removing concrete around PPC I- beams to ensure no damage is done to the beams.

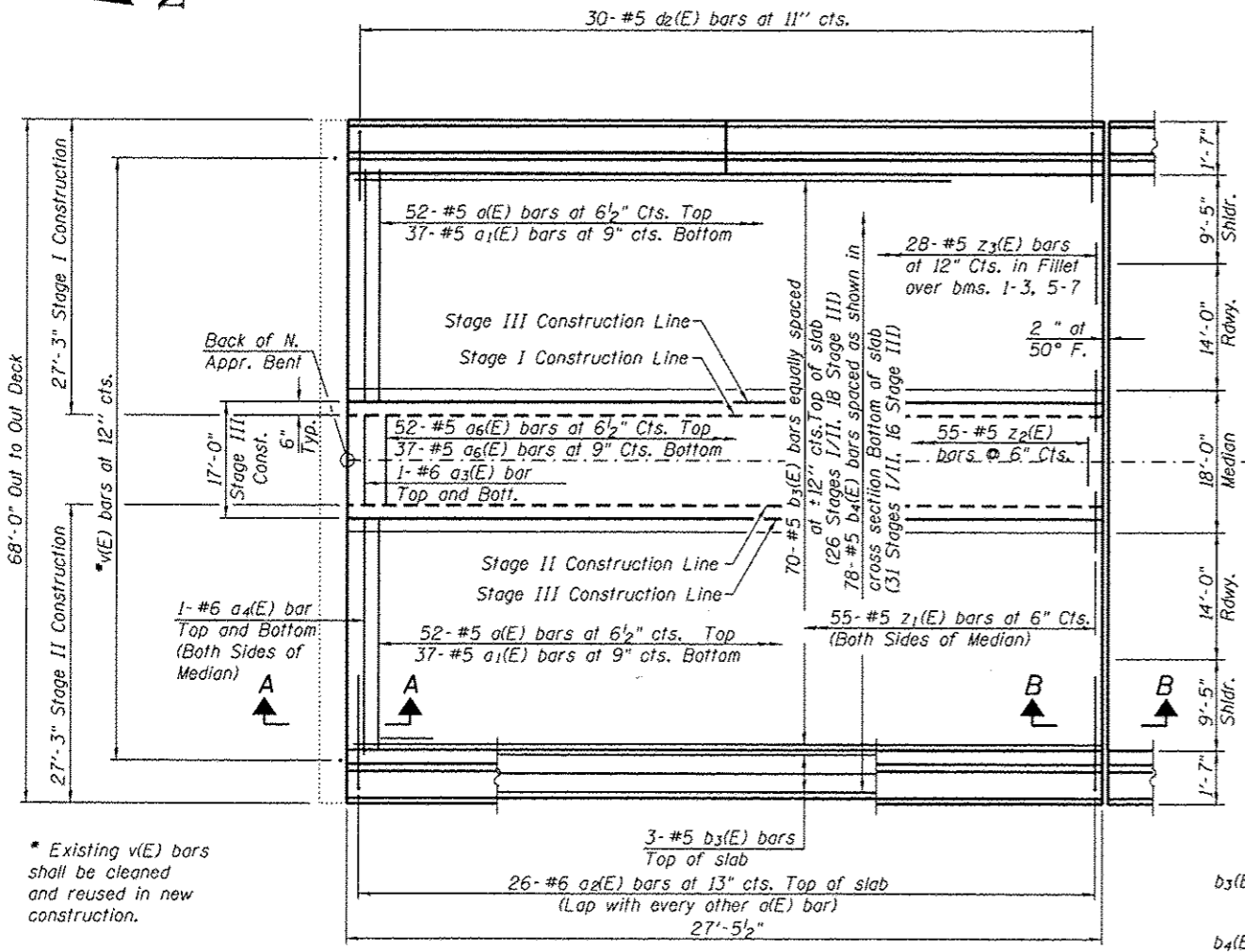


INSIDE ELEVATION OF PARAPET

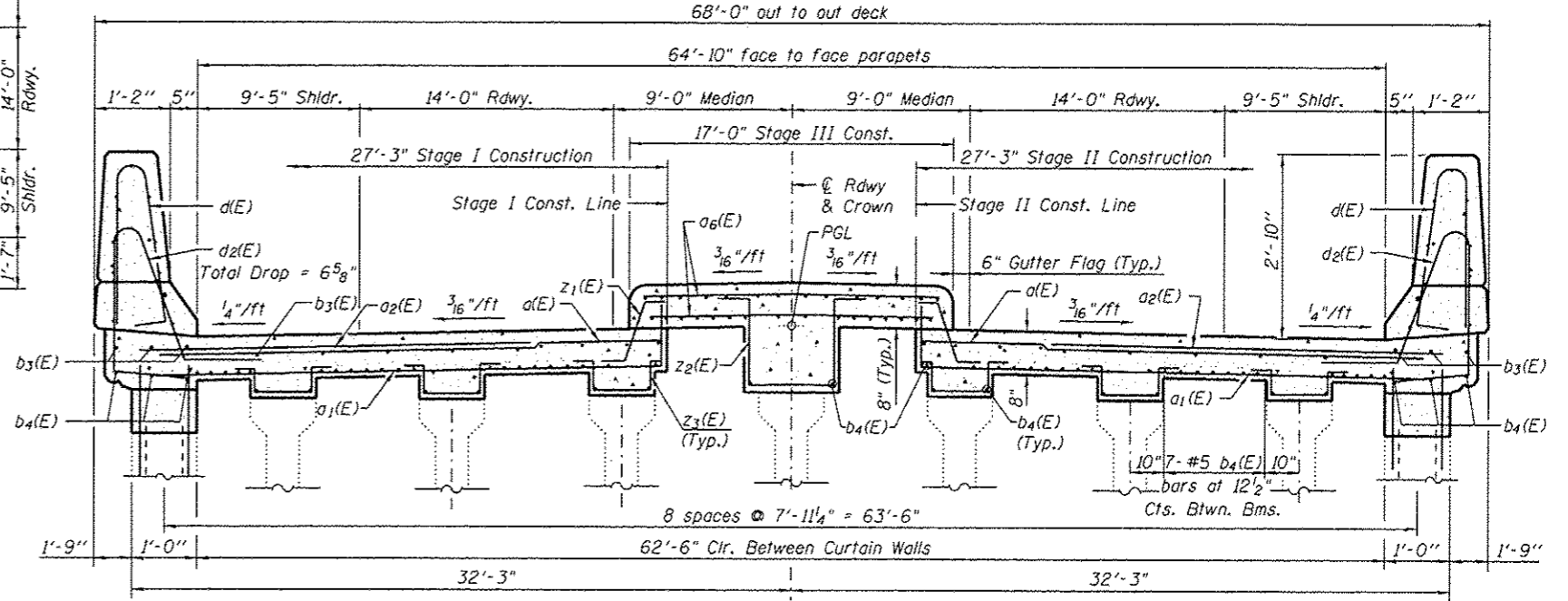


SECTION THRU PARAPET

**v₂(E) bars shall tie existing bars in curtain wall to new construction. (28- #5 bars at 12" Cts., Each Face) Existing vertical bars shall be cleaned, and straightened, and will lap with new v₂(E) bars. Drill and grout v₂(E) bars a minimum of 9".



PLAN
(N. Approach Span Shown, S. Approach Span Similar)



CROSS SECTION
(Looking South)

FILE NAME TR420 over FAL-72.dgn	USER NAME	DESIGNED - SAL	REVISIONS	STATE OF ILLINOIS DEPARTMENT OF TRANSPORTATION	VAULTED ABUTMENT APPROACH SPAN OVERPASS RD. (TR-420) OVER F.A.I.-72 - S.N. 084-0154	F.A.I. RTE.	SECTION	COUNTY	TOTAL SHEETS	SHEET NO.	
	PLOT SCALE	CHECKED - MTH	REVISIONS			72		SANGAMON	194	157	
	PLOT DATE	DRAWN - TJW	REVISIONS			* (B4-10-1RS-3, B4-10-2RS-RIBR.1 CONTRACT NO. 72C90					
		CHECKED - MTH	REVISIONS			FED. ROAD DIST. NO. 6 ILLINOIS FED. AID PROJECT					