

STATE OF ILLINOIS  
DEPARTMENT OF TRANSPORTATION  
DIVISION OF HIGHWAYS

**PROPOSED  
HIGHWAY PLANS**

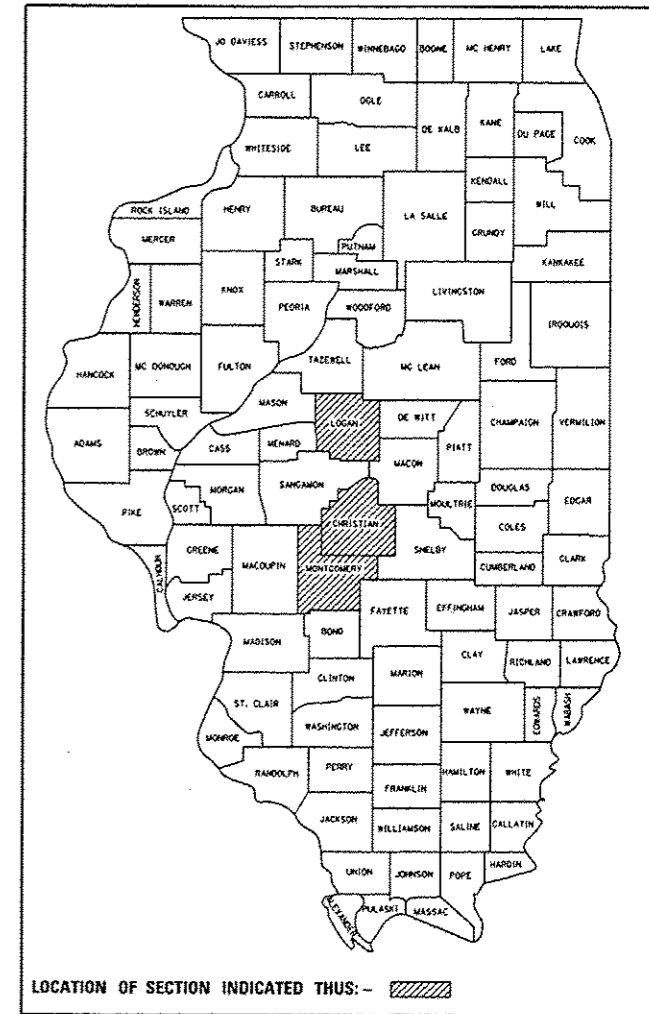
VARIOUS ROUTES  
SECTION D6 BDGE DECK SEALING 2014-2

BRIDGE DECK SEALING  
VARIOUS COUNTIES

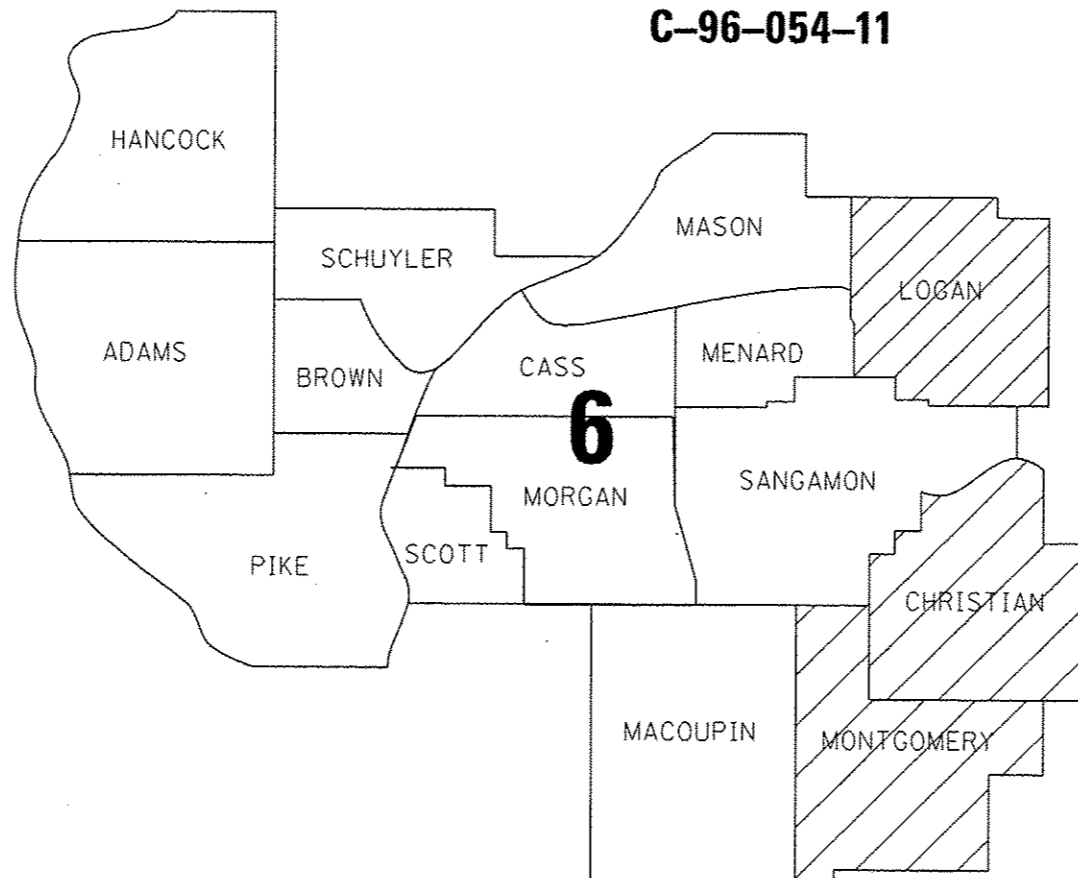
F.A. RTE.	SECTION	COUNTY	TOTAL SHEETS	SHEET NO.
		ILLINOIS	14	1
CONTRACT NO. 72E26				

\* D6 BDGE DECK SEALING 2014-2  
\*\* LOGAN, CHRISTIAN, MONTGOMERY

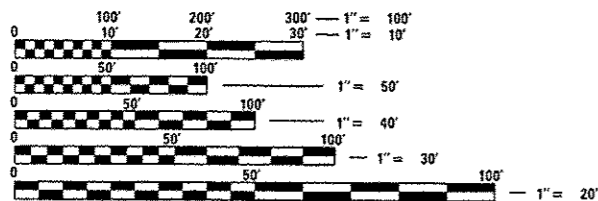
D-96-054-11



C-96-054-11



FOR INDEX OF SHEETS, SEE SHEET NO.



FULL SIZE PLANS HAVE BEEN PREPARED USING STANDARD ENGINEERING SCALES. REDUCED SIZED PLANS WILL NOT CONFORM TO STANDARD SCALES. IN MAKING MEASUREMENTS ON REDUCED PLANS, THE ABOVE SCALES MAY BE USED.

J.U.L.I.E.  
JOINT UTILITY LOCATION INFORMATION FOR EXCAVATION  
1-800-892-0123  
OR 811

PROJECT ENGINEER: VINCE MADONIA (217) 785-9046  
PROJECT MANAGER: VICTOR YOUNG (217) 524-0472

CONTRACT NO. 72E26

STATE OF ILLINOIS  
DEPARTMENT OF TRANSPORTATION  
DIVISION OF HIGHWAYS

SUBMITTED October 25 2013  
Royan L. Prichard  
DEPUTY DIRECTOR OF HIGHWAYS, REGION ENGINEER

Dec 6 2013  
John D. Baranowski PE  
ENGINEER OF DESIGN AND ENVIRONMENT

Dec 6 2013  
Omer Osman PE  
DIRECTOR OF HIGHWAYS, CHIEF ENGINEER

PRINTED BY THE AUTHORITY  
OF THE STATE OF ILLINOIS