

STATE OF ILLINOIS
DEPARTMENT OF TRANSPORTATION
DIVISION OF HIGHWAYS

**PROPOSED
HIGHWAY PLANS**

VARIOUS ROUTES
SECTION D6 BDGE DECK SEALING 2014-2

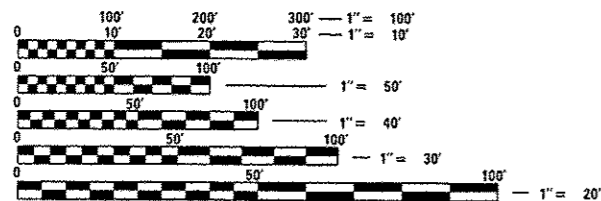
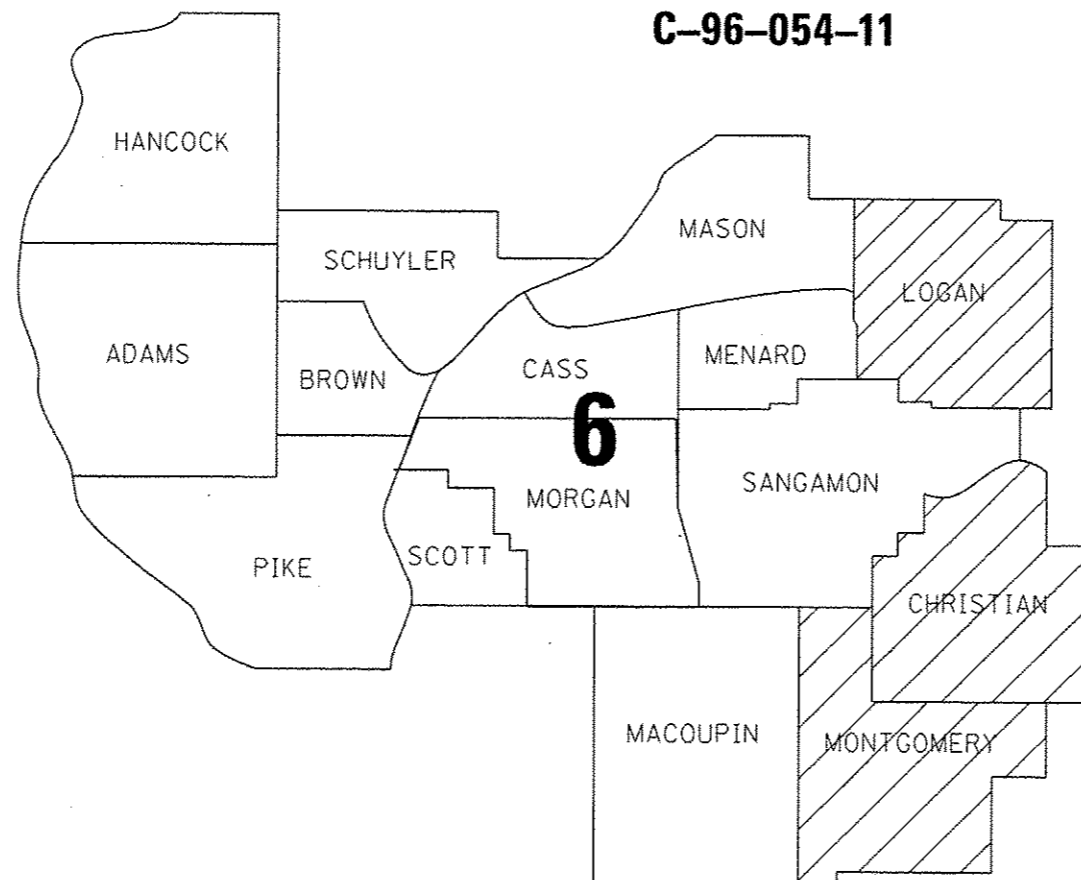
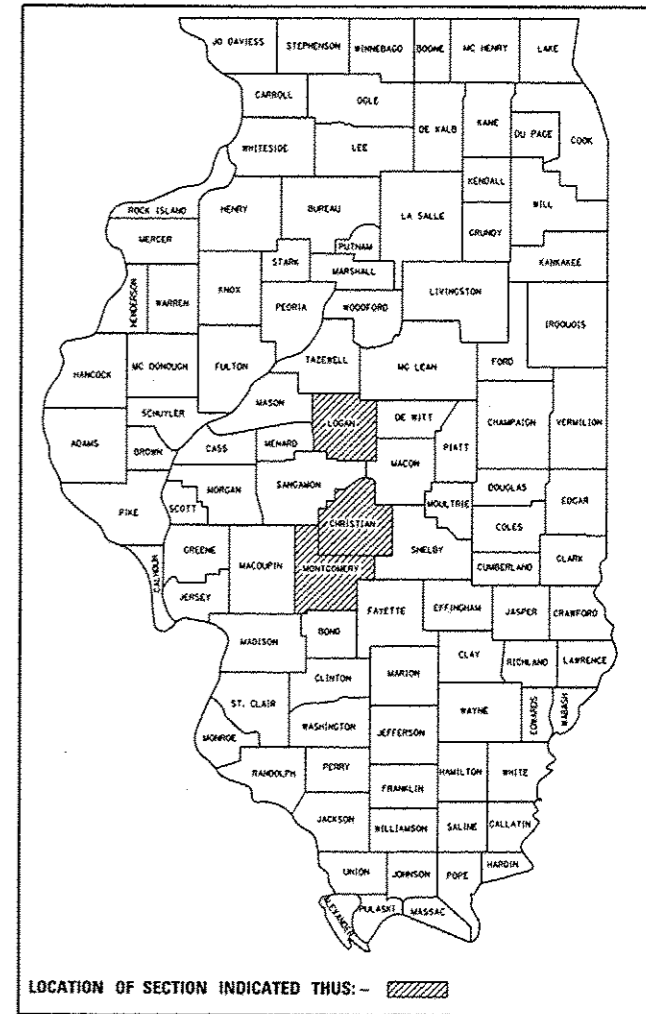
BRIDGE DECK SEALING
VARIOUS COUNTIES

FOR INDEX OF SHEETS, SEE SHEET NO.

F.A. RTE.	SECTION	COUNTY	TOTAL SHEETS	SHEET NO.
		ILLINOIS	14	1
CONTRACT NO. 72E26				

* D6 BDGE DECK SEALING 2014-2
** LOGAN, CHRISTIAN, MONTGOMERY

D-96-054-11



FULL SIZE PLANS HAVE BEEN PREPARED USING STANDARD ENGINEERING SCALES. REDUCED SIZED PLANS WILL NOT CONFORM TO STANDARD SCALES. IN MAKING MEASUREMENTS ON REDUCED PLANS, THE ABOVE SCALES MAY BE USED.

J.U.L.I.E.
JOINT UTILITY LOCATION INFORMATION FOR EXCAVATION
1-800-892-0123
OR 811

PROJECT ENGINEER: VINCE MADONIA (217) 785-9046
PROJECT MANAGER: VICTOR YOUNG (217) 524-0472

CONTRACT NO. 72E26

STATE OF ILLINOIS
DEPARTMENT OF TRANSPORTATION
DIVISION OF HIGHWAYS

SUBMITTED October 25 2013
Royan L. Prichard
DEPUTY DIRECTOR OF HIGHWAYS, REGION ENGINEER

Dec 6 2013
John D. Baranowski PE
ENGINEER OF DESIGN AND ENVIRONMENT

Dec 6 2013
Omer Osman PE
DIRECTOR OF HIGHWAYS, CHIEF ENGINEER

PRINTED BY THE AUTHORITY
OF THE STATE OF ILLINOIS

INDEX OF SHEETS

- 1. COVER SHEET
- 2. INDEX, GENERAL NOTES, STANDARDS, & SIGNATURES
- 3. SUMMARY OF QUANTITIES
- 4.-6. SCHEDULE OF QUANTITIES
- 7.-13. BRIDGE LOCATION MAPS
- 14. BRIDGE PLAN SHEETS

HIGHWAY STANDARDS

- 000001-06
- 001006
- 701201-04
- 701400-07
- 701406-08
- 701411-08
- 701446-05
- 701501-06
- 701901-03

COMMITMENTS

COMMITMENTS ARE NOT TO BE ALTERED WITHOUT THE WRITTEN APPROVAL OF ALL PARTIES TO WHICH THE COMMITMENT WAS MADE.

- 1. THE RESIDENT ENGINEER SHALL CONTACT STUDIES AND PLANS CONCERNING ANY MAJOR PLAN CHANGE, TO MAKE SURE NO PREVIOUS COMMITMENTS (NOT LISTED) WERE MADE AFFECTING THE DESIGN AND ALLOW AN IMPROVED DESIGN FOR FUTURE PROJECTS.

GENERAL NOTES

THE CONCRETE SEALER SHALL BE APPLIED TO THE ENTIRE TOP SURFACE OF THE DECK, INCLUDING THE INSIDE FACES AND TOPS OF THE PARAPETS.
WATER BASED CONCRETE SEALERS WILL NOT BE ALLOWED.

EXISTING PAVEMENT MARKINGS SHALL BE TEMPORARILY COVERED PRIOR TO APPLICATION OF THE DECK SURFACE TREATMENT TO PREVENT THE MATERIAL FROM BEING APPLIED TO THE MARKINGS. THE TEMPORARY COVERING SHALL BE REMOVED AFTER APPLICATION OF THE DECK SURFACE TREATMENT, AND PRIOR TO OPENING TO TRAFFIC. COST TO BE INCLUDED WITH CONCRETE SEALER.

DISTRICT SIX	
EXAMINED <u>10/18</u>	20 <u>13</u>
<i>Bill M. Ryan</i> OPERATIONS ENGINEER	
EXAMINED <u>Oct 9</u>	20 <u>2013</u>
<i>Jim Hill</i> PROJECT IMPLEMENTATION ENGINEER	
EXAMINED <u>October 25</u>	20 <u>13</u>
<i>ARMU</i> PROGRAM DEVELOPMENT ENGINEER	

• D6 BDGE DECK SEALING 2014-2
•• LOGAN, CHRISTIAN, MONTGOMERY

FILE NAME *	USER NAME * jonesta	DESIGNED -	REVISED -	STATE OF ILLINOIS DEPARTMENT OF TRANSPORTATION	INDEX OF SHEETS, GENERAL NOTES AND COMMITMENTS	F.A. RTE.	SECTION	COUNTY	TOTAL SHEETS	SHEET NO.	
cd:\pw_work\pwidat\jonesta\d8289421\06x	***sh:gnnote.dgn	DRAWN -	REVISED -			VAR	.	** VARIOUS	14	2	
PLOT SCALE * 40.0000 * / in.	CHECKED -	REVISED -				CONTRACT NO. 72E26					
PLOT DATE * Oct-23-2013 02:14:13PM	DATE -	REVISED -				ILLINOIS FED. AID PROJECT					

CODE NO.	ITEM	UNIT	TOTAL QUANTITY	CONSTR. CODE
				100% STATE BRIDGE 0014 NONE
X5870015	BRIDGE DECK CONCRETE SEALER	SQ FT	570997	570997
67100100	MOBILIZATION	L SUM	1	1
70100420	TRAFFIC CONTROL AND PROTECTION, STANDARD 701411	EACH	4	4
70100450	TRAFFIC CONTROL AND PROTECTION, STANDARD 701201	L SUM	1	1
70100700	TRAFFIC CONTROL AND PROTECTION, STANDARD 701406	L SUM	1	1
70100815	TRAFFIC CONTROL AND PROTECTION, STANDARD 701446	L SUM	1	1

• D6 BDGE DECK SEALING 2014-2
 ** LOGAN, CHRISTIAN, MONTGOMERY

FILE NAME *	USER NAME * sparksgu	DESIGNED -	REVISED -	STATE OF ILLINOIS DEPARTMENT OF TRANSPORTATION	SUMMARY OF QUANTITIES			F.A. RTE.	SECTION	COUNTY	TOTAL SHEETS	SHEET NO.
c:\p\work\p\p\dot\sparksgu\02289421\06*	***shl-500.dgn	DRAWN -	REVISED -					VAR	*	** VARIOUS	14	3
	PLOT SCALE * 100.0000' / 1"	CHECKED -	REVISED -		SCALE:	SHEET NO. 1	OF 1 SHEETS	STA.	TO STA.	ILLINOIS FED. AID PROJECT		
	PLOT DATE * Oct-25-2013 03:06:40PM	DATE -	REVISED -		CONTRACT NO. 72E26							

LOGAN COUNTY

SN	FacilityCarried	Location	LengthTotal	BridgeRdwyWidth	Parapet	Total Width	Area
0540003	IL 10	.6M W I-55	300.2	35.4	7.54	42.94	12890.588
0540004	I-55 W FRONTAGE ROAD	1.7M N ATLANTA INTCH	27	43.6	7.54	51.14	1380.78
0540022	IL 121	3.9M E IL54-MT PUL.*	128.8	32	7.54	39.54	5092.752
0540024	US 136	1.6M E 1ST-SAN JOSE	105.8	38.7	7.54	46.24	4892.192
0540025	US 136	1.9M W I-55	159.2	38.7	7.54	46.24	7361.408
0540026	US 136	1.2M W ARMINGTON RD	285.7	42.5	7.54	50.04	14296.428
0540031	IL 54	1.5M NE CORNLAND CTR	395.5	31.5	7.54	39.04	15440.32
0540039	CH S13	BROADWELL INTERCHNGE	296.3	40.5	7.54	48.04	14234.252
0540043	I-55 NB	1.6M S IL 10	206	54.6	7.54	62.14	12800.84
0540044	I-55 SB	1.6M S IL 10	206	54.5	7.54	62.04	12780.24
0540045	CH E52	.8 S IL10-1.6 W BL55	257.8	32.5	7.54	40.04	10322.312
0540050	I-155 NB	I-55/155 NW LINCOLN	193.8	38.5	7.54	46.04	8922.552
0540052	OLD IL 121	2.7 N IL10-1 N BL 55	250	42.5	7.54	50.04	12510
0540059	CH S27	3.1 E I155/1 N BL 55	252	34.5	7.54	42.04	10594.08
0540076	FAI 155 SB	2.7MI S I-155/IL136	143	40	7.54	47.54	6798.22
0540077	FAI 155 NB	2.7MI S I-155/IL136	143	40	7.54	47.54	6798.22
0540078	EMDEN RD	1M S IL 136	324	34	7.54	41.54	13458.96
0540079	US 136	I-155/US 136 INTCHG	217	62	7.54	69.54	15090.18
0540080	FAI 155 SB	3.0MI S I-155/IL136	72	40	7.54	47.54	3422.88
0540081	FAI 155 NB	3.0MI S I-155/IL136	72	40	7.54	47.54	3422.88
0540082	OLD ILL 121	0.4 MI N LINCOLN	136	31.5	7.54	39.04	5309.44
0540083	OLD ILL 121	0.3 MI N LINCOLN	136	31.5	7.54	39.04	5309.44
0540103	OLD ILL 121	0.5 MI N LINCOLN	136	31.5	7.54	39.04	5309.44
0540105	IL 10	0.5 MI W I-55	236.2	50	7.54	57.54	13590.948
0540106	ILL 121	1.3MI SE LINCOLN	230.5	35.4	7.54	42.94	9897.67
0540503	ARMINGTON SPUR	TAZWL CL 1M S ARMGTN	222	29	7.54	36.54	8111.88
0540505	FAS 1774 {OLD 121}	3 MILE NORTH LINCOLN	227	32	7.54	39.54	8975.58
0540507	ILL 10	.10 MI E MASON CO LN	259.5	32	7.54	39.54	10260.63
						TOTAL SQ FT	259275.11

- D6 BDGE DECK SEALING 2014-2
- LOGAN, CHRISTIAN, MONTGOMERY

FILE NAME =	USER NAME = sparksgw	DESIGNED -	REVISED -	STATE OF ILLINOIS DEPARTMENT OF TRANSPORTATION	SCHEDULE OF QUANTITIES				F.A. RTE.	SECTION	COUNTY	TOTAL SHEETS	SHEET NO.
ct:\pwork\pwork\sparksgw\0289421\06xxx-sht-SOOLLOGAN.dgn		DRAWN -	REVISED -										
Default	PLOT SCALE = 20.0000' / in.	CHECKED -	REVISED -			SCALE:	SHEET	OF	SHEETS	STA.	TO	STA.	
	PLOT DATE = Oct-25-2013 03:04:51PM	DATE -	REVISED -										ILLINOIS FED. AID PROJECT

MONTGOMERY COUNTY

SN	FacilityCarried	Location	LengthTotal	BridgeRdwyWidth	Parapet	Total Width	Area
0680007	IL 16	.7M E LITCHFIELD LK	157.6	39.4	7.54	46.94	7,398
0680018	IL 48/127	RAYMOND W CITY LIMIT	89.2	32	7.54	39.54	3,527
0680037	CH 17	FARMERSVILLE INTERCH	299.8	46.5	7.54	54.04	16,201
0680038	I-55 (NB)	.3M S FARMRSVLE INT.	62.4	40	7.54	47.54	2,966
0680039	I-55 (SB)	.3M S FARMRSVLE INT.	62.4	40	7.54	47.54	2,966
0680042	IL 48/127	I-55 / IL127/48 INT.	262.5	72.9	7.54	80.44	21,116
0680043	IL 108	IL 108/I-55 INTERCH.	262.2	47.7	7.54	55.24	14,484
0680045	I-55 (SB)	4.5M S IL 108 INT.	292.5	38.5	7.54	46.04	13,467
0680046	I-55 (NB)	4.5M S IL 108 INT.	292.5	38.5	7.54	46.04	13,467
0680048	I-55 (SB)	1.8M N IL 16 INT.	227.8	39	7.54	46.54	10,602
0680049	I-55 (NB)	1.8M N IL 16 INT.	227.8	39	7.54	46.54	10,602
0680051	IL 16	LITCHFIELD INTERCHNG	331	89.1	7.54	96.64	31,988
0680054	FAI 55 W FR	.75 MI S OF CH 17	65	40	7.54	47.54	3,090
0680055	IL 16	1.75M E IL16/127 JCT	139	40	7.54	47.54	6,608
0680056	IL 16 (SCHOOL ST.)	.3M E IL 127 (MAIN)	60.5	30	7.54	37.54	2,271
0680057	IL 127	.1M N IL 185	210.3	40	7.54	47.54	9,998
0680058	IL 127	1.6M S IL 48	69	32	7.54	39.54	2,728
0680059	IL 127	3.4M S IL 48	78	32	7.54	39.54	3,084
0680060	NOKOMIS BLACKTOP	7.4M E IL 127	160	30	7.54	37.54	6,006
0680061	OLD & OLD OLD US 66	1M N IL 16	252.1	31.5	7.54	39.04	9,842
0680062	IL 16	1.3MI NE SCHRAM CITY	82	35.6	7.54	43.14	3,537
0680501	IL 16	2.1M W SPRUCE-NOKOMI	106.8	35.4	7.54	42.94	4,586
0680502	IL 16	NOKOMIS W CITY LIMIT	54.2	35.4	7.54	42.94	2,327
0680503	IL 16	.95M E ELM - NOKOMIS	41.3	31.5	7.54	39.04	1,612
0680504	IL 108	.85M W I-55	95.1	35.8	7.54	43.34	4,122
0680506	IL 127	2.3 M N BOND COUNTY	207.5	36	7.54	43.54	9,035
0680507	IL 127	2.1 M N BOND CO LINE	79.1	36	7.54	43.54	3,444
						TOTAL SQ FT	221,074

• D6 BDGE DECK SEALING 2014-2
 •• LOGAN, CHRISTIAN, MONTGOMERY

FILE NAME =	USER NAME = sparksgw	DESIGNED -	REVISED -	STATE OF ILLINOIS DEPARTMENT OF TRANSPORTATION	SCHEDULE OF QUANTITIES				F.A. RTÉ.	SECTION	COUNTY	TOTAL SHEETS	SHEET NO.		
ct:\pw\work\p1dot\sparksgw\0289421\06xxx-sht-SOULOGAN.dgn		DRAWN -	REVISED -		SCALE:	SHEET	OF	SHEETS	STA.	TO	STA.	•	•• VARIOUS	14	6
Default	PLOT SCALE = 20.0000' / in.	CHECKED -	REVISED -												
	PLOT DATE = Oct-25-2013 03:04:59PM	DATE -	REVISED -												

ILLINOIS FED. AID PROJECT

LOGAN COUNTY



SN 054-0024 OVER
PRAIRIE CREEK DITCH

SN 054-0079 OVER
I-55

SN 054-0078 OVER
I-55

SN 054-0025 OVER
PRAIRIE CREEK

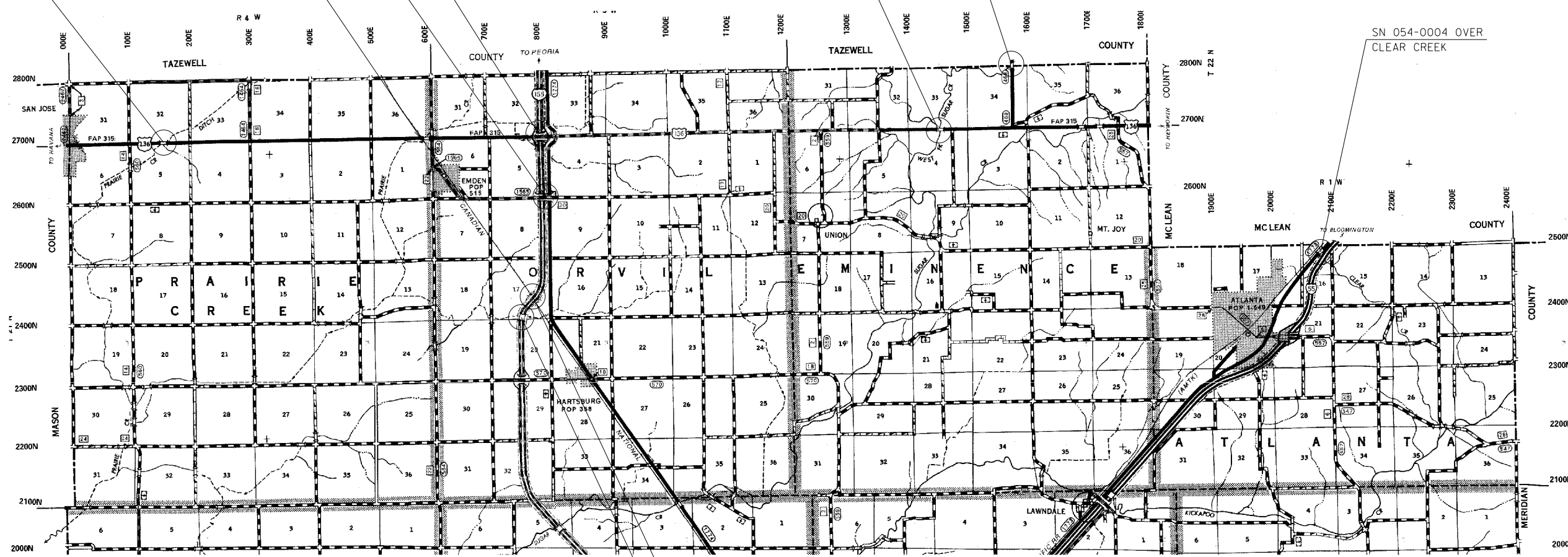
SN 054-0503 OVER
SUGAR CREEK

SN 054-0026 OVER
W. FORK SUGAR CREEK

SN 054-0004 OVER
CLEAR CREEK

SN 054-0076 &
SN 054-0077 OVER
I.C.G. RR

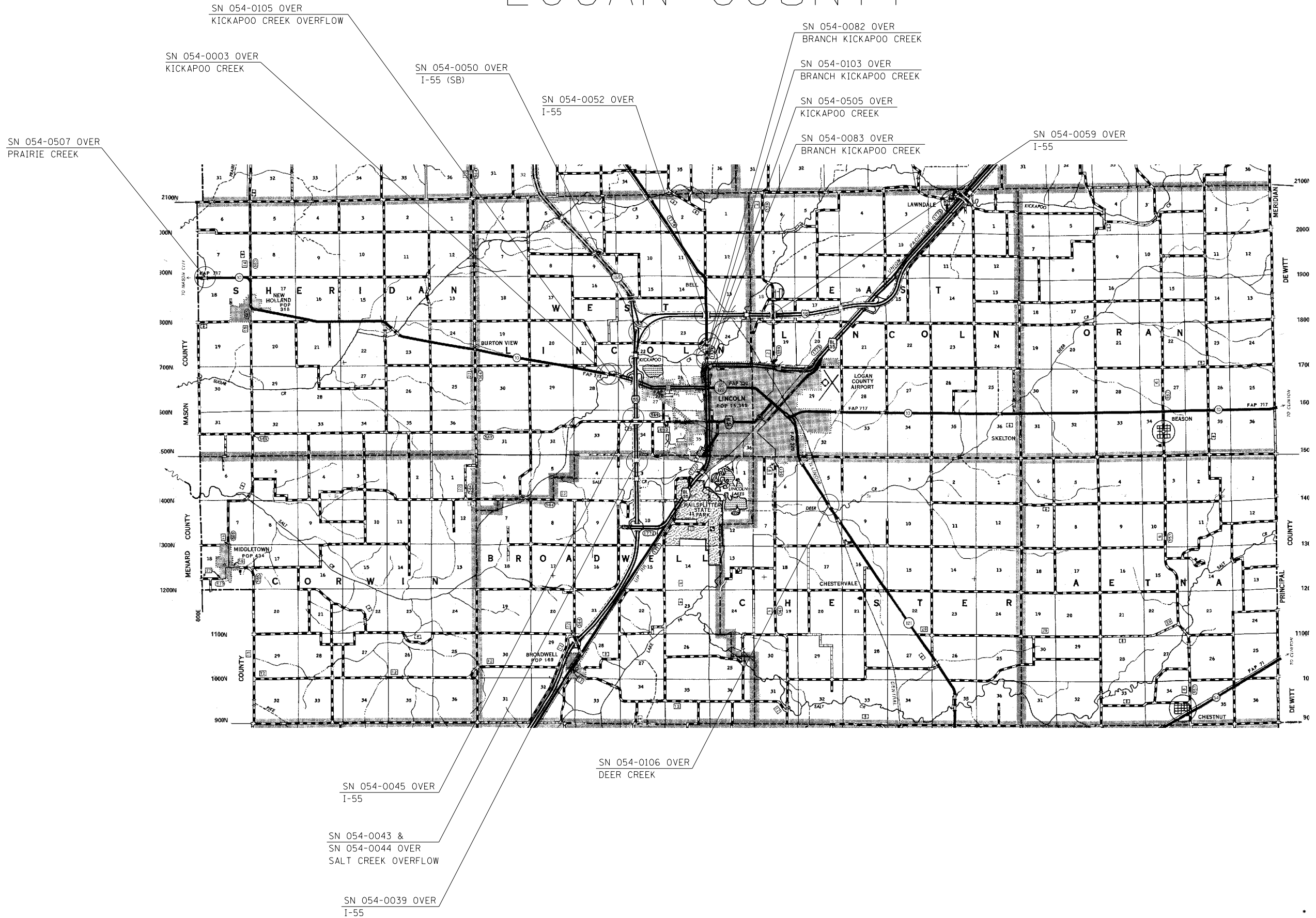
SN 054-0080 &
SN 054-0081 OVER
SOUTH BRANCH PRAIRIE CREEK



- * D6 BDGE DECK SEALING 2014-2
- ** LOGAN, CHRISTIAN, MONTGOMERY

FILE NAME =	USER NAME = sparksgw	DESIGNED -	REVISED -	STATE OF ILLINOIS DEPARTMENT OF TRANSPORTATION	BRIDGE LOCATION MAP LOGAN COUNTY			F.A. RTE.	SECTION	COUNTY	TOTAL SHEETS	SHEET NO.
et:\pw\work\p\dot\sparksgw\10289421\06xxx-sht-LOGAN.L.dgn	PLOT SCALE = 40.0000' / in.	DRAWN -	REVISED -					VAR	.	** VARIOUS	14	7
PLOT DATE = Oct-25-2013 03:05:04PM	DATE -	CHECKED -	REVISED -		CONTRACT NO. 72E26			ILLINOIS FED. AID PROJECT				
		DATE -	REVISED -		SCALE:	SHEET 1	OF 3 SHEETS	STA.	TO STA.			

LOGAN COUNTY



- D6 BDGE DECK SEALING 2014-2
- LOGAN, CHRISTIAN, MONTGOMERY

FILE NAME =	USER NAME = sparksgw	DESIGNED -	REVISED -
ct:\pw\work\p\idot\sparksgw\10289421\06xxx-sht-LOGAN.L.dgn		DRAWN -	REVISED -
		CHECKED -	REVISED -
		DATE -	REVISED -

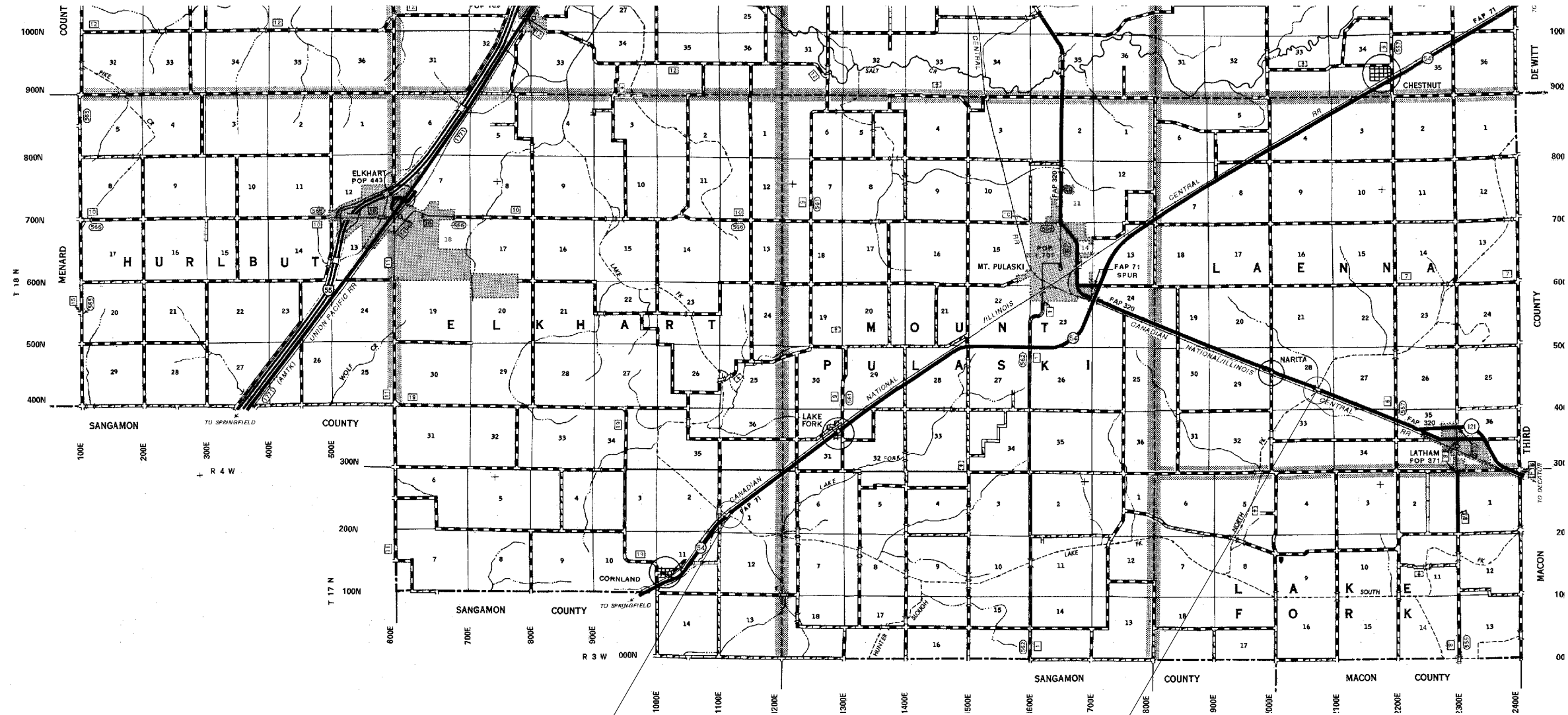
**STATE OF ILLINOIS
DEPARTMENT OF TRANSPORTATION**

BRIDGE LOCATION MAP LOGAN COUNTY

SCALE: SHEET 2 OF 3 SHEETS STA. TO STA.

F.A. RTE.	SECTION	COUNTY	TOTAL SHEETS	SHEET NO.
VAR	•	•• VARIOUS	14	8
CONTRACT NO. 72E26				
ILLINOIS FED. AID PROJECT				

LOGAN COUNTY



SN 054-0031 OVER
LAKE FORK CREEK

SN 054-0022 OVER
NORTH BRANCH LAKE FORK

- D6 BDGE DECK SEALING 2014-2
- LOGAN, CHRISTIAN, MONTGOMERY

FILE NAME =	USER NAME = sparksgw	DESIGNED -	REVISED -	STATE OF ILLINOIS DEPARTMENT OF TRANSPORTATION	BRIDGE LOCATION MAP LOGAN COUNTY			F.A. RTE.	SECTION	COUNTY	TOTAL SHEETS	SHEET NO.
et:\pw\work\p\dot\sparksgw\10289421\06xxx-sht-LOGAN.L.dgn	PLOT SCALE = 40.0000' / in.	DRAWN -	REVISED -					VAR	.	** VARIOUS	14	9
	PLOT DATE = Oct-25-2013 03:05:22PM	CHECKED -	REVISED -		SCALE: SHEET 3 OF 3 SHEETS STA. TO STA.			CONTRACT NO. 72E26				
		DATE -	REVISED -		ILLINOIS FED. AID PROJECT							

MONTGOMERY COUNTY

SN 068-0037 OVER
I-55

SN 068-0038 &
SN 068-0039 OVER
MACOUPIN CREEK

SN 068-0054 OVER
MACOUPIN CREEK

SN 068-0042 OVER
I-55

SN 068-0043 OVER
I-55

SN 068-0504 OVER
SHOP CREEK

SN 068-0045 &
SN 068-0046 OVER
I.C. RR

SN 068-0048 &
SN 068-0049 OVER
BURLINGTON RR

SN 068-0061 OVER
BURLINGTON RR

SN 068-0051 OVER
I-55

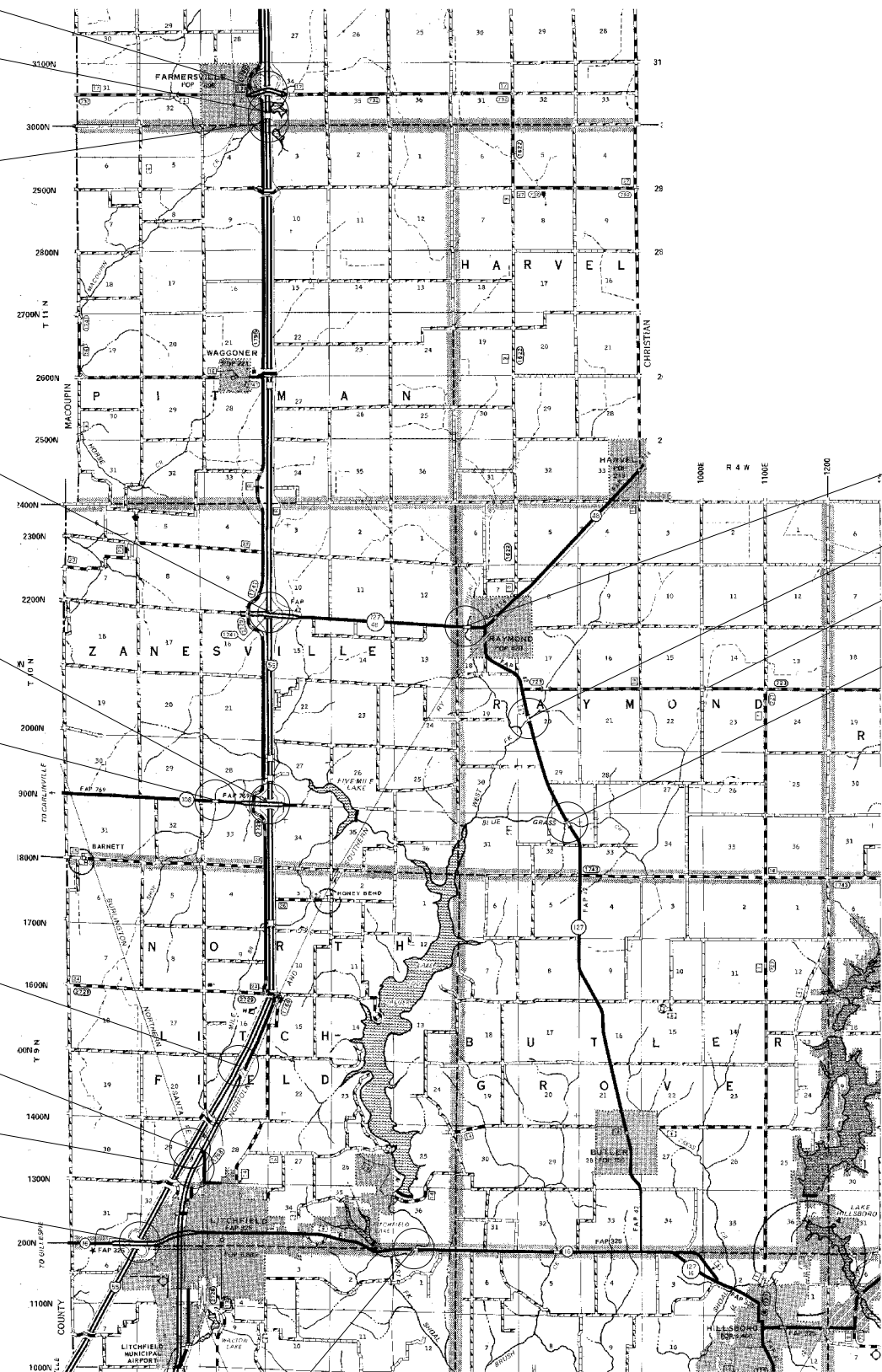
SN 068-0018 OVER
WEST FORK SHOAL CREEK

SN 068-0058 OVER
WEST FORK SHOAL CREEK

SN 068-0060 OVER
MIDDLE FORK SHOAL CREEK

SN 068-0059 OVER
BLUE GRASS CREEK

SN 068-0007 OVER
W. SHOAL CREEK



- D6 BDGE DECK SEALING 2014-2
- LOGAN, CHRISTIAN, MONTGOMERY

FILE NAME =	USER NAME = sparksgw	DESIGNED -	REVISED -
ct:\pw\work\p\idot\sparksgw\0289421\06xxx-sht-MONTGOMERY.dgn		DRAWN -	REVISED -
	PLOT SCALE = 40.0000' / in.	CHECKED -	REVISED -
	PLOT DATE = Oct-25-2013 03:05:43PM	DATE -	REVISED -

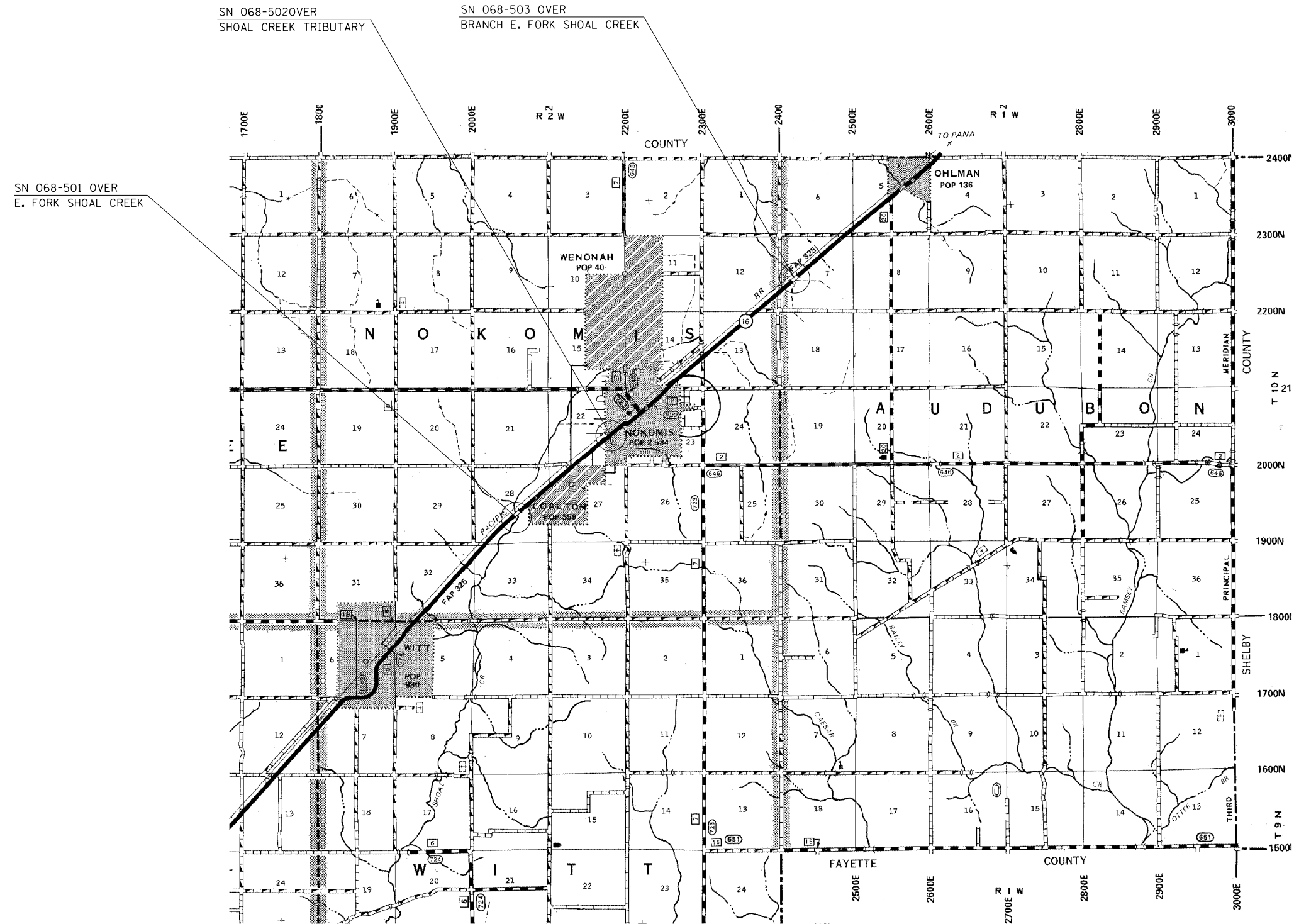
STATE OF ILLINOIS
DEPARTMENT OF TRANSPORTATION

BRIDGE LOCATION MAP

SCALE: SHEET 1 OF 3 SHEETS STA. TO STA.

F.A. RTE.	SECTION	COUNTY	TOTAL SHEETS	SHEET NO.
VAR	•	•• VARIOUS	14	11
CONTRACT NO. 72E26				
ILLINOIS FED. AID PROJECT				

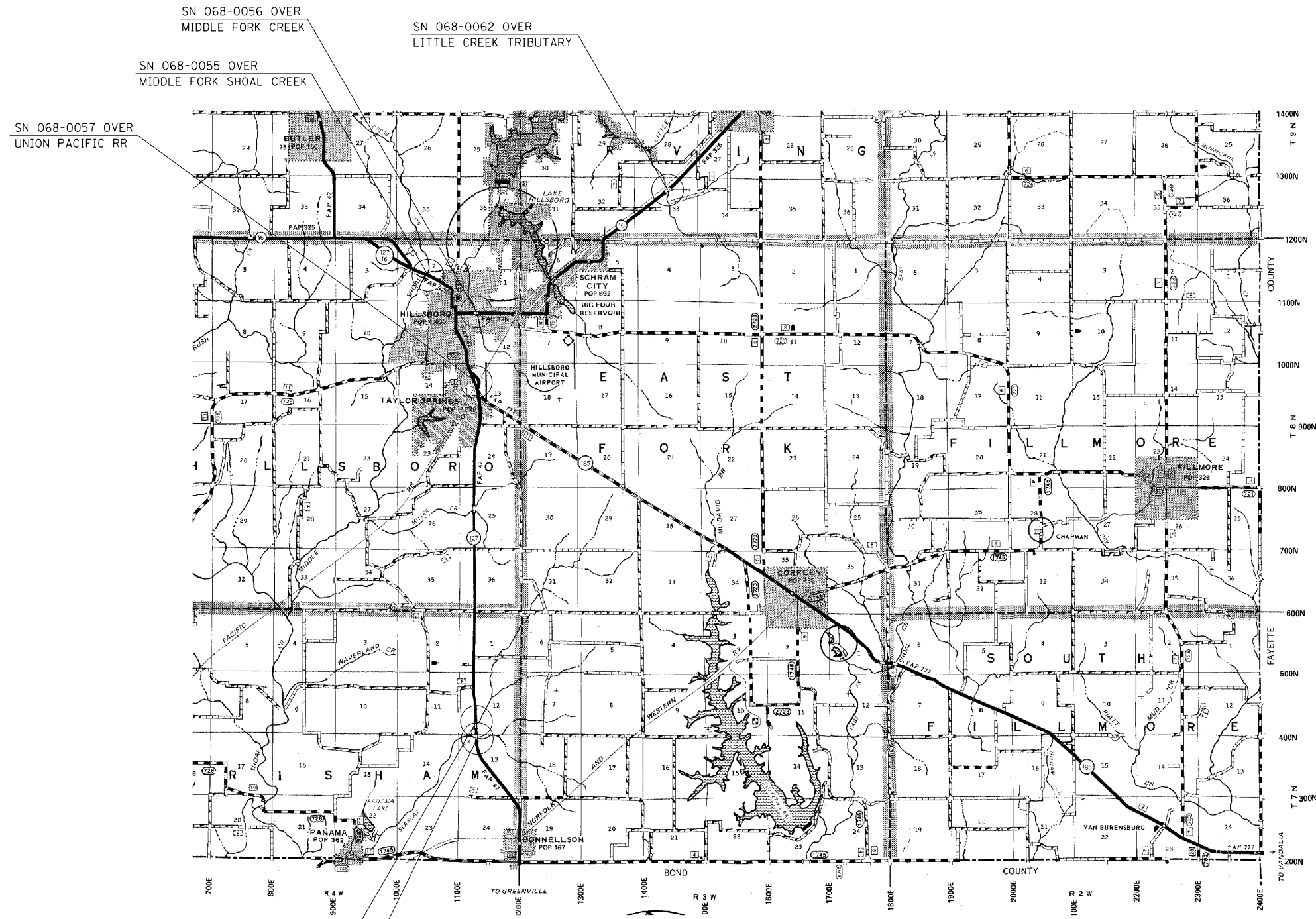
MONTGOMERY COUNTY



- D6 BDGE DECK SEALING 2014-2
- LOGAN, CHRISTIAN, MONTGOMERY

FILE NAME =	USER NAME = sparksgw	DESIGNED -	REVISED -	STATE OF ILLINOIS DEPARTMENT OF TRANSPORTATION	BRIDGE LOCATION MAP			F.A. RTE.	SECTION	COUNTY	TOTAL SHEETS	SHEET NO.
et:\pw\work\p\dot\sparksgw\10289421\06xxx-sht-MONTGOMERY.dgn	PLOT SCALE = 40.0000' / in.	DRAWN -	REVISED -					VAR	.	** VARIOUS	14	12
	PLOT DATE = Oct-25-2013 03:05:52PM	CHECKED -	REVISED -		CONTRACT NO. 72E26			ILLINOIS FED. AID PROJECT				
		DATE -	REVISED -		SCALE:	SHEET 2	OF 3 SHEETS	STA.	TO STA.			

MONTGOMERY COUNTY



SN 068-0506 OVER
BEARCAT CREEK

SN 068-0507 OVER
LITTLE BEAR CREEK

- D6 BDGE DECK SEALING 2014-2
- LOGAN, CHRISTIAN, MONTGOMERY

FILE NAME =	USER NAME = sparksgw	DESIGNED -	REVISED -
et:\pw\work\p\dot\sparksgw\10289421\06xxx-sht-MONTGOMERY.dgn		DRAWN -	REVISED -
	PLOT SCALE = 40.0000' / in.	CHECKED -	REVISED -
	PLOT DATE = Oct-25-2013 03:06:03PM	DATE -	REVISED -

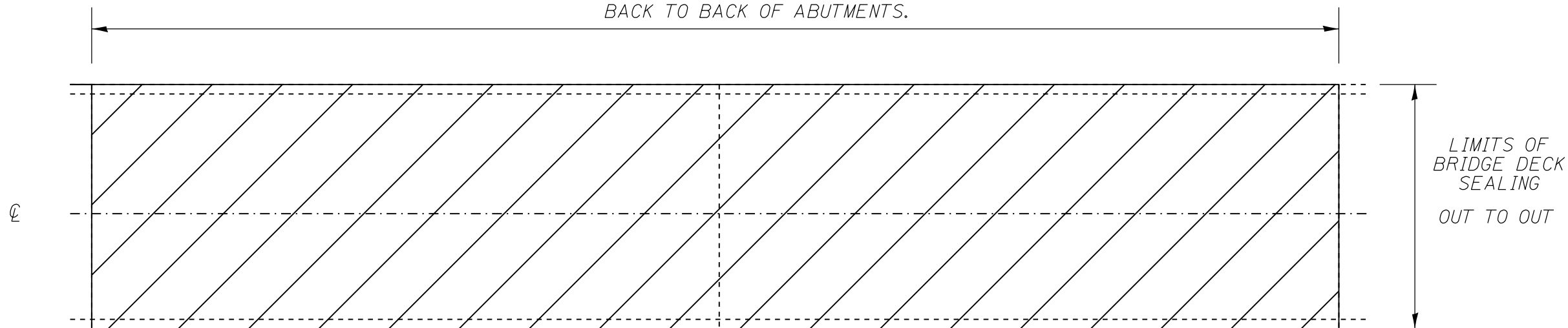
**STATE OF ILLINOIS
DEPARTMENT OF TRANSPORTATION**

BRIDGE LOCATION MAP

SCALE: SHEET 3 OF 3 SHEETS STA. TO STA.

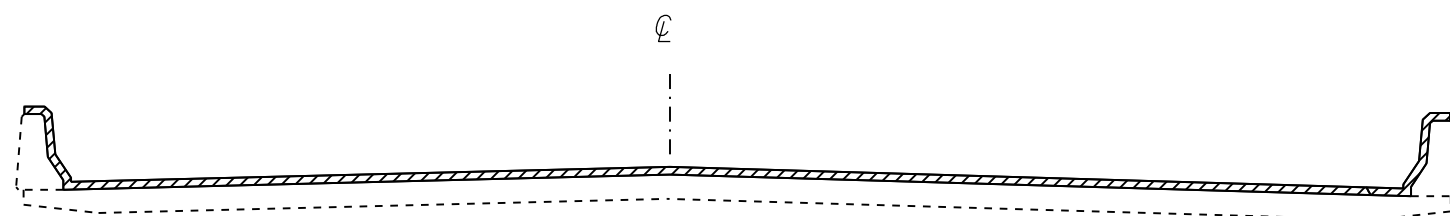
F.A. RTE.	SECTION	COUNTY	TOTAL SHEETS	SHEET NO.
VAR	•	•• VARIOUS	14	13
			CONTRACT NO. 72E26	
ILLINOIS FED. AID PROJECT				

LIMITS OF BRIDGE DECK SEALING
BACK TO BACK OF ABUTMENTS.

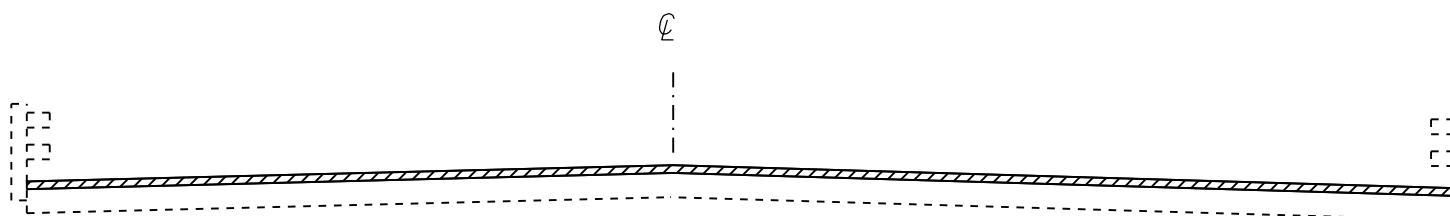


LIMITS OF
BRIDGE DECK
SEALING
OUT TO OUT

PLAN VIEW



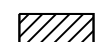
CROSS SECTION
WITH PARAPET



CROSS SECTION
WITH BRIDGE RAIL

NOTE: BRIDGE APPROACH PAVEMENT
SHALL NOT BE SEALED

NOT TO SCALE

 AREA TO BE SEALED

* D6 BDGE DECK SEALING 2014-2
** LOGAN, CHRISTIAN, MONTGOMERY

FILE NAME =	USER NAME = sparksgw	DESIGNED -	REVISED -
ct:\pw\work\p1dot\sparksgw\10289421\0672E26-shr-BridgePlans.dgn		DRAWN -	REVISED -
	PLOT SCALE = 100.0000' / 1in.	CHECKED -	REVISED -
	PLOT DATE = Oct-25-2013 03:06:14PM	DATE -	REVISED -

STATE OF ILLINOIS
DEPARTMENT OF TRANSPORTATION

BRIDGE DETAIL SHEET

SCALE: NONE SHEET NO. 1 OF 1 SHEETS STA. TO STA.

F.A. RTE.	SECTION	COUNTY	TOTAL SHEETS	SHEET NO.
		** VARIOUS	14	14
CONTRACT NO. 72E26			ILLINOIS FED. AID PROJECT	