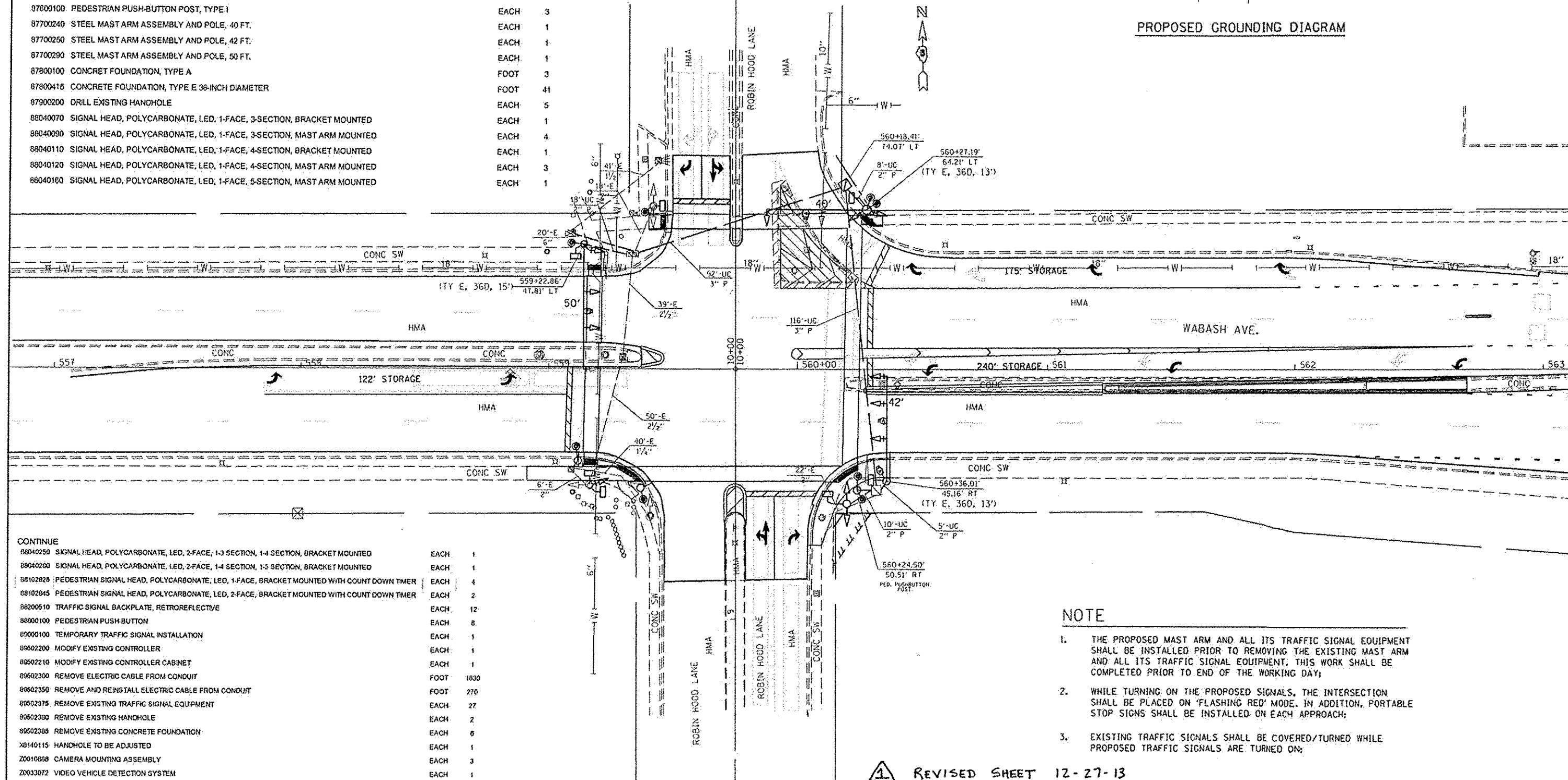
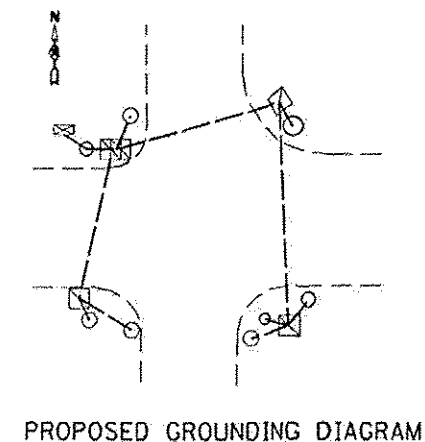


BILL OF MATERIALS: WABASH & ROBINHOOD

CODE NO.	ITEM	UNIT	TOTAL QUANTITY
81028350	UNDERGROUND CONDUIT, PVC, 2" DIA.	FOOT	28
81028370	UNDERGROUND CONDUIT, PVC, 3" DIA.	FOOT	208
81400100	HANDHOLE	EACH	1
85000200	MAINTENANCE OF EXISTING TRAFFIC SIGNAL INSTALLATION	EACH	1
87300010	GROUNDING EXISTING HANDHOLE FRAME AND COVER	EACH	3
87301245	ELECTRIC CABLE IN CONDUIT, SIGNAL NO. 14 5C	FOOT	2076
87301255	ELECTRIC CABLE IN CONDUIT, SIGNAL NO. 14 7C	FOOT	366
87301705	ELECTRIC CABLE IN CONDUIT, COMMUNICATION NO. 18 3 PAIR	FOOT	945
87301800	ELECTRIC CABLE IN CONDUIT, EQUIPMENT GROUNDING CONDUCTOR, NO. 6 1C	FOOT	540
87502700	TRAFFIC SIGNAL POST, ALUMINUM 16 FT.	EACH	1
87800100	PEDESTRIAN PUSH-BUTTON POST, TYPE I	EACH	3
87700240	STEEL MAST ARM ASSEMBLY AND POLE, 40 FT.	EACH	1
87700250	STEEL MAST ARM ASSEMBLY AND POLE, 42 FT.	EACH	1
87700290	STEEL MAST ARM ASSEMBLY AND POLE, 50 FT.	EACH	1
87800100	CONCRET FOUNDATION, TYPE A	FOOT	3
87800415	CONCRETE FOUNDATION, TYPE E 36-INCH DIAMETER	FOOT	41
87900200	DRILL EXISTING HANDHOLE	EACH	5
88040070	SIGNAL HEAD, POLYCARBONATE, LED, 1-FACE, 3-SECTION, BRACKET MOUNTED	EACH	1
88040090	SIGNAL HEAD, POLYCARBONATE, LED, 1-FACE, 3-SECTION, MAST ARM MOUNTED	EACH	4
88040110	SIGNAL HEAD, POLYCARBONATE, LED, 1-FACE, 4-SECTION, BRACKET MOUNTED	EACH	1
88040120	SIGNAL HEAD, POLYCARBONATE, LED, 1-FACE, 4-SECTION, MAST ARM MOUNTED	EACH	3
88040160	SIGNAL HEAD, POLYCARBONATE, LED, 1-FACE, 5-SECTION, MAST ARM MOUNTED	EACH	1



CONTINUE

88040250	SIGNAL HEAD, POLYCARBONATE, LED, 2-FACE, 1-3 SECTION, 1-4 SECTION, BRACKET MOUNTED	EACH	1
88040260	SIGNAL HEAD, POLYCARBONATE, LED, 2-FACE, 1-4 SECTION, 1-3 SECTION, BRACKET MOUNTED	EACH	1
88102825	PEDESTRIAN SIGNAL HEAD, POLYCARBONATE, LED, 1-FACE, BRACKET MOUNTED WITH COUNT DOWN TIMER	EACH	4
88102845	PEDESTRIAN SIGNAL HEAD, POLYCARBONATE, LED, 2-FACE, BRACKET MOUNTED WITH COUNT DOWN TIMER	EACH	2
88200510	TRAFFIC SIGNAL BACKPLATE, RETROREFLECTIVE	EACH	12
88900100	PEDESTRIAN PUSH-BUTTON	EACH	8
89000100	TEMPORARY TRAFFIC SIGNAL INSTALLATION	EACH	1
89502200	MODIFY EXISTING CONTROLLER	EACH	1
89502210	MODIFY EXISTING CONTROLLER CABINET	EACH	1
89502300	REMOVE ELECTRIC CABLE FROM CONDUIT	FOOT	1030
89502350	REMOVE AND REINSTALL ELECTRIC CABLE FROM CONDUIT	FOOT	270
89502375	REMOVE EXISTING TRAFFIC SIGNAL EQUIPMENT	EACH	27
89502380	REMOVE EXISTING HANDHOLE	EACH	2
89502385	REMOVE EXISTING CONCRETE FOUNDATION	EACH	6
X8140115	HANDHOLE TO BE ADJUSTED	EACH	1
Z0010658	CAMERA MOUNTING ASSEMBLY	EACH	3
Z0033072	VIDEO VEHICLE DETECTION SYSTEM	EACH	1

- NOTE**
1. THE PROPOSED MAST ARM AND ALL ITS TRAFFIC SIGNAL EQUIPMENT SHALL BE INSTALLED PRIOR TO REMOVING THE EXISTING MAST ARM AND ALL ITS TRAFFIC SIGNAL EQUIPMENT. THIS WORK SHALL BE COMPLETED PRIOR TO END OF THE WORKING DAY.
  2. WHILE TURNING ON THE PROPOSED SIGNALS, THE INTERSECTION SHALL BE PLACED ON 'FLASHING RED' MODE. IN ADDITION, PORTABLE STOP SIGNS SHALL BE INSTALLED ON EACH APPROACH.
  3. EXISTING TRAFFIC SIGNALS SHALL BE COVERED/TURNED WHILE PROPOSED TRAFFIC SIGNALS ARE TURNED ON.

**REVISED SHEET 12-27-13**