

CODE NO.	ITEM	UNIT	TOTAL QUANTITY	ACNHPP	ACHSIP SAFETY	ACHSIP SAFETY	ACHSIP SAFETY	ACHSIP SAFETY	ACHSIP SAFETY	ACNHPP
				80%F,20%S ROADWAY 0005 URBAN	90%F,10%S ROADWAY 0021 URBAN	MALL ENTRANCE EAST + WEST 90% F / 10% S TRAFFIC SIGNALS 0021 URBAN	JEROME (Leonard) 90%F,05%S,05%C TRAFFIC SIGNALS 0021 URBAN	CONSTRUCTION CODE DRAW BRIDGE 90% F / 6.67% S / 3.33% C TRAFFIC SIGNALS 0021 URBAN	SPRINGFIELD 90%F,05%S,05%C TRAFFIC SIGNALS 0021 URBAN	SPFLD SIDEWALKS 80% F, 20% C 0021 URBAN
20200100	EARTH EXCAVATION	CU YD	399	5	394					
20400800	FURNISHED EXCAVATION	CU YD	121	79	42					
20800150	TRENCH BACKFILL	CU YD	2	2						
25000100	SEEDING, CLASS 1	ACRE	0.25	0.25						
25000400	NITROGEN FERTILIZER NUTRIENT	POUND	22.5	22.5						
25000500	PHOSPHORUS FERTILIZER NUTRIENT	POUND	22.5	22.5						
25000600	POTASSIUM FERTILIZER NUTRIENT	POUND	22.5	22.5						
25000700	AGRICULTURAL GROUND LIMESTONE	TON	0.25	0.25						
25100125	MULCH, METHOD 3	ACRE	0.25	0.25						
31101000	SUBBASE GRANULAR MATERIAL, TYPE B	TON	401	65	336					
40600200	BITUMINOUS MATERIALS (PRIME COAT)	TON	36.3	36	0.3					
40600300	AGGREGATE (PRIME COAT)	TON	191	189	2					
40600982	HOT-MIX ASPHALT SURFACE REMOVAL - BUTT JOINT	SD YD	5,605	5,605						
40600990	TEMPORARY RAMP	SD YD	650	650						

14

12-27-13

CODE NO.	ITEM	UNIT	TOTAL QUANTITY	ACNHPP	ACHSIP SAFETY	ACHSIP SAFETY	ACHSIP SAFETY	ACHSIP SAFETY	ACNHPP
				80%F,20%S ROADWAY	90%F,10%S ROADWAY	CONSTRUCTION CODE	JEROME (Leonard) 90%F,05%S,05%C TRAFFIC SIGNALS	SPRINGFIELD 90%F,05%S,05%C TRAFFIC SIGNALS	SPFLD SIDEWALKS 80% F,20%C
				0005 URBAN	0021 URBAN	0021 URBAN	0021 URBAN	0021 URBAN	0021 URBAN
40603565	POLYMERIZED HOT-MIX ASPHALT SURFACE COURSE, MIX "E", NTO	TON	7981	7886	95				
40800050	INCIDENTAL HOT-MIX ASPHALT SURFACING	TON	79.1	79.1					
42400100	PORTLAND CEMENT CONCRETE SIDEWALK 4 INCH	SO FT	3434						3434
42400800	DETECTABLE WARNINGS	SO FT	448						448
44000100	PAVEMENT REMOVAL	SO YD	308	218	90				
44000500	COMBINATION CURB AND CUTTER REMOVAL	FOOT	3741	164	3,577				
44000600	SIDEWALK REMOVAL	SO FT	2521						2521
44200152	PAVEMENT PATCHING, TYPE I, 13 INCH	SO YD	100	100					
44200156	PAVEMENT PATCHING, TYPE II, 13 INCH	SO YD	1500	1500					
44200160	PAVEMENT PATCHING, TYPE III, 13 INCH	SO YD	200	200					
44200162	PAVEMENT PATCHING, TYPE IV, 13 INCH	SO YD	200	200					
54213663	PRECAST REINFORCED CONCRETE FLARED END SECTIONS 18"	EACH	1	1					
54248510	CONCRETE COLLAR	CU YD	0.3	0.3					
55100700	STORM SEWER REMOVAL 15"	FOOT	10	10					

ACHSIP SAFETY
 MALL ENTRANCE EAST & WEST
 90% F / 10% S
 TRAFFIC SIGNALS
 0021 URBAN

ACHSIP SAFETY
 CONSTRUCTION CODE
 DRAW BRIDGE
 90% F / 6.67% S / 3.33% C
 TRAFFIC SIGNALS
 0021 URBAN

14/
 100% CITY

12-27-13

CODE NO.	ITEM	UNIT	TOTAL QUANTITY	ACNHPP	ACHSIP SAFETY	ACHSIP SAFETY	ACHSIP SAFETY	ACHSIP SAFETY	ACHSIP SAFETY	ACNHPP
				80%F,20%S ROADWAY 0005 URBAN	90%F,10%S ROADWAY 0021 URBAN	MALL ENTRANCE EAST + WEST 90% / 10% TRAFFIC SIGNALS 0021 URBAN	JEROME (Leonard) 90%F,05%S,05%C TRAFFIC SIGNALS 0021 URBAN	CONSTRUCTION CODE DRAW BRIDGE 90% F / 0.67% S / 3.33% C TRAFFIC SIGNALS 0021 URBAN	SPRINGFIELD 90%F,05%S,05%C TRAFFIC SIGNALS 0021 URBAN	SPFLD SIDEWALKS 80% F, 20% C 0021 URBAN
60218400	MANHOLES, TYPE A, 4'-DIAMETER, TYPE 1 FRAME, CLOSED LID	EACH	1	1						
60237000	INLETS, TYPE A, TYPE 15 FRAME AND LID	EACH	2	2						
60500040	REMOVING MANHOLES	EACH	1	1						
60500060	REMOVING INLETS	EACH	2	2						
60605000	COMBINATION CONCRETE CURB AND GUTTER, TYPE B-6.24	FOOT	1652	520	1,132					
60618300	CONCRETE MEDIAN SURFACE, 4 INCH	SQ FT	2951		2951					
60620000	CONCRETE MEDIAN, TYPE SB-6.24	SQ FT	1945		1,945					
66700205	PERMANENT SURVEY MARKERS, TYPE I	EACH	26	26						
* 66900200	NON-SPECIAL WASTE DISPOSAL	CU YD	45	45						
* 66900450	SPECIAL WASTE PLANS AND REPORTS	L SUM	1	1						
* 66900530	SOIL DISPOSAL ANALYSIS	EACH	3	3						
67000400	ENGINEER'S FIELD OFFICE, TYPE A	CAL MO	6	4	2					
67100100	MOBILIZATION	L SUM	1	0.75	0.25					
70102620	TRAFFIC CONTROL AND PROTECTION, STANDARD 701501	L SUM	1	1						

* SPECIALTY ITEM

12-27-13

CODE NO.	ITEM	UNIT	TOTAL QUANTITY	ACNHPP	ACHSIP SAFETY	ACHSIP SAFETY	ACHSIP SAFETY	ACHSIP SAFETY	ACNHPP
				80%F,20%S ROADWAY	90%F,10%S ROADWAY	MALL ENTRANCE EAST + WEST 90% F / 10% S TRAFFIC SIGNALS	JEROME (Leonard) 90%F,05%S,05%C TRAFFIC SIGNALS	CONSTRUCTION CODE DRAW BRIDGE 90% F / 6.67% S / 3.33% C TRAFFIC SIGNALS	SPRINGFIELD 90%F,05%S,05%C TRAFFIC SIGNALS
				0005 URBAN	0021 URBAN	0021 URBAN	0021 URBAN	0021 URBAN	0021 URBAN
70102622	TRAFFIC CONTROL AND PROTECTION, STANDARD 701502	L SUM	1	1					
70102632	TRAFFIC CONTROL AND PROTECTION, STANDARD 701602	L SUM	1	1					
70102635	TRAFFIC CONTROL AND PROTECTION, STANDARD 701701	L SUM	1	1					
70102640	TRAFFIC CONTROL AND PROTECTION, STANDARD 701801	L SUM	1	1					
70103815	TRAFFIC CONTROL SURVEILLANCE	CAL DA	15	15					
70106800	CHANGEABLE MESSAGE SIGN	CAL MO	16	16					
70300100	SHORT TERM PAVEMENT MARKING	FOOT	7,064	7,064					
70301000	WORK ZONE PAVEMENT MARKING REMOVAL	SO FT	1,472	1,472					
72800100	TELESCOPING STEEL SIGN SUPPORT	FOOT	336	336					
* 78000300	THERMOPLASTIC PAVEMENT MARKING - LINE 5"	FOOT	35,319	35,319					
* 78000400	THERMOPLASTIC PAVEMENT MARKING - LINE 6"	FOOT	13,116	13,116					
* 78000500	THERMOPLASTIC PAVEMENT MARKING - LINE 8"	FOOT	2,742	2,742					
* 78000600	THERMOPLASTIC PAVEMENT MARKING - LINE 12"	FOOT	1,553	1,553					
* 78004200	PREFORMED PLASTIC PAVEMENT MARKING, TYPE B - INLAID - LETTERS AND SYMBOLS	SO FT	2,652	2,652					

* SPECIALTY ITEM

12-27-13

FILE NAME : c:\pwork\spw\dot\sparkagw\d0296742\08729\sh\ssq.dgn	USER NAME : sparkagw	DESIGNED - RTS	REVISIONS -	STATE OF ILLINOIS DEPARTMENT OF TRANSPORTATION	F.A.P. RTE. 664	SECTION *	COUNTY SANGAMON	TOTAL SHEETS 126	SHEET NO. 6
Default	PLT SCALE * 100.0000 ' / in.	DRAWN - RTS	REVISIONS -		SCALE:	SHEET 4 OF 9 SHEETS	STA.	TO STA.	CONTRACT NO. 72F29
	PLT DATE * Nov-08-2013 01:05:20PM	CHECKED -	REVISIONS -		ILLINOIS FED. AID PROJECT				
		DATE - 10-18-13	REVISIONS -		10/RS-15,TS-9,(21)RS-9,TS-2				

CODE NO.	ITEM	UNIT	TOTAL QUANTITY	ACNHPP	ACHSIP SAFETY	ACHSIP SAFETY	ACHSIP SAFETY	ACHSIP SAFETY	ACHSIP SAFETY	ACNHPP
				80%F,20%S ROADWAY	90%F,10%S ROADWAY	MALL ENTRANCE EAST + WEST 90% F / 10% S TRAFFIC SIGNALS	JEROME (Leonard) 90%F,05%S,05%C TRAFFIC SIGNALS	DRAW BRIDGE 90% F / 6.67% S / 3.33% C TRAFFIC SIGNALS	SPRINGFIELD 90%F,05%S,05%C TRAFFIC SIGNALS	SPFLD SIDEWALKS 80% F,20%C
				0005 URBAN	0021 URBAN	0021 URBAN	0021 URBAN	0021 URBAN	0021 URBAN	
* 78004280	PREFORMED PLASTIC PAVEMENT MARKING, TYPE B - INLAID - LINE 24"	FOOT	1,461	1,461						
* 78100100	RAISED REFLECTIVE PAVEMENT MARKER	EACH	935	935						
78300200	RAISED REFLECTIVE PAVEMENT MARKER REMOVAL	EACH	935	935						
* 81028340	UNDERGROUND CONDUIT, PVC, 1 1/2" DIA.	FOOT	25	25						
* 81028350	UNDERGROUND CONDUIT, PVC, 2" DIA.	FOOT	354		108	15	19	212		
* 81028370	UNDERGROUND CONDUIT, PVC, 3" DIA.	FOOT	728		227		228	273		
* 81028390	UNDERGROUND CONDUIT, PVC, 4" DIA.	FOOT	175	175						
* 82102250	LUMINARE, SODIUM VAPOR, HORIZONTAL MOUNT, 250 WATT	EACH	2					2		
* 81400100	HANDHOLE	EACH	3					3		
* 85000200	MAINTENANCE OF EXISTING TRAFFIC SIGNAL INSTALLATION	EACH	7		1.5	1	0.5	4		
* 87300010	GROUNDING EXISTING HANDHOLE FRAME AND COVER	EACH	32		8	4	3	17		
* 87301245	ELECTRIC CABLE IN CONDUIT, SIGNAL NO. 14 5C	FOOT	11660		4500	280	535	6345		1
* 87301255	ELECTRIC CABLE IN CONDUIT, SIGNAL NO. 14 7C	FOOT	1420		210	480	359	365		
* 87301705	ELECTRIC CABLE IN CONDUIT, COMMUNICATION NO. 18 3 PAIR	FOOT	4195		1391	605	564	1635		
* 87301900	ELECTRIC CABLE IN CONDUIT, EQUIPMENT GROUNDING CONDUCTOR, NO. 6 1C	FOOT	3970		1141	320	319	2190		

* SPECIALTY ITEM

12-27-13

CODE NO.	ITEM	UNIT	TOTAL QUANTITY	ACNHPP	ACHSIP SAFETY	ACHSIP SAFETY	ACHSIP SAFETY	ACHSIP SAFETY	ACHSIP SAFETY	ACNHPP
				80%F,20%S ROADWAY 0005 URBAN	90%F,10%S ROADWAY 0021 URBAN	ACHSIP SAFETY MALL ENTRANCE EAST + WEST 90% F / 10% S TRAFFIC SIGNALS 0021 URBAN	ACHSIP SAFETY CONSTRUCTION CODE JEROME (Leonard) 90%F,05%S,05%C TRAFFIC SIGNALS 0021 URBAN	ACHSIP SAFETY DRAW BRIDGE 90% F / 6.67% S / 3.33% C TRAFFIC SIGNALS 0021 URBAN	ACHSIP SAFETY SPRINGFIELD 90%F,05%S,05%C TRAFFIC SIGNALS 0021 URBAN	ACHSIP SAFETY SPFLD SIDEWALKS 80% F, 20% C 0021 URBAN
* 87500600	TRAFFIC SIGNAL POST, 10 FT.	EACH	4		1				3	
* 87502640	TRAFFIC SIGNAL POST, ALUMINUM, 10 FT.	EACH	4			1			3	
* 87501200	TRAFFIC SIGNAL POST, 16 FT.	EACH	3						3	
* 87502700	TRAFFIC SIGNAL POST, ALUMINUM, 10 FT.	EACH	5						5	
* 87600100	PEDESTRIAN PUSH-BUTTON POST, TYPE I	EACH	8			1			7	
* 87700200	STEEL MAST ARM ASSEMBLY AND POLE, 32 FT.	EACH	1					1		
* 87700220	STEEL MAST ARM ASSEMBLY AND POLE, 36 FT.	EACH	1				1			
* 87700230	STEEL MAST ARM ASSEMBLY AND POLE, 38 FT.	EACH	1						1	
* 87700240	STEEL MAST ARM ASSEMBLY AND POLE, 40 FT.	EACH	2				1		1	
* 87700250	STEEL MAST ARM ASSEMBLY AND POLE, 42 FT.	EACH	1						1	
* 87700270	STEEL MAST ARM ASSEMBLY AND POLE, 46 FT.	EACH	1						1	
* 87700290	STEEL MAST ARM ASSEMBLY AND POLE, 50 FT.	EACH	3			2			1	
* 87700300	STEEL MAST ARM ASSEMBLY AND POLE, 52 FT.	EACH	2			1			1	
* 87700310	STEEL MAST ARM ASSEMBLY AND POLE, 54 FT.	EACH	1						1	
* 87702656	STEEL MAST ARM ASSEMBLY AND POLE WITH DUAL MAST ARMS, 42 FT. AND 56 FT.	EACH	1					1		
* 87800100	CONCRETE FOUNDATION, TYPE A	FOOT	33			3			30	

* SPECIALTY ITEM

12-27-13

CODE NO.	ITEM	UNIT	TOTAL QUANTITY	ACNHPP	ACHSIP SAFETY	ACHSIP SAFETY	ACHSIP SAFETY	ACHSIP SAFETY	ACHSIP SAFETY	ACNHPP
				80%F,20%S ROADWAY 0005 URBAN	90%F,10%S ROADWAY 0021 URBAN	MALL ENTRANCE EAST & WEST 90% F / 10% S TRAFFIC SIGNALS 0021 URBAN	JEROME (Leonard) 90%F,05%S,05%C TRAFFIC SIGNALS 0021 URBAN	CONSTRUCTION CODE DRAW BRIDGE 90% F / 6.67% S / 3.33% C TRAFFIC SIGNALS 0021 URBAN	SPRINGFIELD 90%F,05%S,05%C TRAFFIC SIGNALS 0021 URBAN	SPFLD SIDEWALKS 80% F,20%C 0021 URBAN
* 87800415	CONCRETE FOUNDATION, TYPE E 36-INCH DIAMETER	FOOT	175			45	24	11	95	
* 87800420	CONCRETE FOUNDATION, TYPE E 42-INCH DIAMETER	FOOT	22					22		
* 87900200	DRILL EXISTING HANDHOLE	EACH	29			8	2	4	15	
* 88040070	SIGNAL HEAD, POLYCARBONATE, LED, 1-FACE, 3-SECTION, BRACKET MOUNTED	EACH	4			1		1	2	
* 88040090	SIGNAL HEAD, POLYCARBONATE, LED, 1-FACE, 3-SECTION, MAST ARM MOUNTED	EACH	30			9	4	5	12	
* 88040110	SIGNAL HEAD, POLYCARBONATE, LED, 1-FACE, 4-SECTION, BRACKET MOUNTED	EACH	12			4	2	1	5	
* 88040120	SIGNAL HEAD, POLYCARBONATE, LED, 1-FACE, 4-SECTION, MAST ARM MOUNTED	EACH	14			4	2	1	7	
* 88040150	SIGNAL HEAD, POLYCARBONATE, LED, 1-FACE, 5-SECTION, BRACKET MOUNTED	EACH	3			1			2	
* 88040160	SIGNAL HEAD, POLYCARBONATE, LED, 1-FACE, 5-SECTION, MAST ARM MOUNTED	EACH	2					1	1	
* 88040250	SIGNAL HEAD, POLYCARBONATE, LED, 2-FACE, 1-3 SECTION, 1-4 SECTION, BRACKET MOUNTED	EACH	2						2	
* 88040320	SIGNAL HEAD, POLYCARBONATE, LED, 3-FACE, 1-4-SECTION, 2-5-SECTION, BRACKET MOUNTED	EACH	1				1			
* 88102825	PEDESTRIAN SIGNAL HEAD, POLYCARBONATE, LED, 1-FACE, BRACKET MOUNTED WITH COUNTDOWN TIMER	EACH	26			9		1	16	
* 88102845	PEDESTRIAN SIGNAL HEAD, POLYCARBONATE, LED, 2-FACE, BRACKET MOUNTED WITH COUNTDOWN TIMER	EACH	21			4	4		13	
* 88200510	TRAFFIC SIGNAL BACKPLATE, RETROREFLECTIVE	EACH	68			19	11	7	31	
* 88040280	SIGNAL HEAD, POLYCARBONATE, LED, 2-FACE, 1-4 SECTION, 1-5 SECTION, BRACKET MOUNTED	EACH	1						1	

* SPECIALTY ITEM

12-27-13

CODE NO.	ITEM	UNIT	TOTAL QUANTITY	ACNHPP	ACHSIP SAFETY	ACHSIP SAFETY	ACHSIP SAFETY	ACHSIP SAFETY	ACNHPP	
				80%F,20%S ROADWAY 0005 URBAN	90%F,10%S ROADWAY 0021 URBAN	MALL ENTRANCE EAST + WEST 90% F / 10% S TRAFFIC SIGNALS 0021 URBAN	JEROME (Leonard) 90%F,05%S,05%C TRAFFIC SIGNALS 0021 URBAN	CONSTRUCTION CODE DRAW BRIDGE 90% F / 10% S / 3.33% C TRAFFIC SIGNALS 0021 URBAN	SPRINGFIELD 90%F,05%S,05%C TRAFFIC SIGNALS 0021 URBAN	SPFLD SIDEWALKS 80% F,20%C 0021 URBAN
* 88800100	PEDESTRIAN PUSH-BUTTON	EACH	66			16	8	2	40	
* 89000100	TEMPORARY TRAFFIC SIGNAL INSTALLATION	EACH	3			0.5		0.5	2	
* 89501250	RELOCATE EXISTING TRAFFIC SIGNAL EQUIPMENT	EACH	12			4			8	
* 89502200	MODIFY EXISTING CONTROLLER	EACH	7			1.5	1	0.5	4	
* 89502210	MODIFY EXISTING CONTROLLER CABINET	EACH	7			1.5	1	0.5	4	
* 89502300	REMOVE ELECTRIC CABLE FROM CONDUIT	FOOT	8275			3055	1010		3610	
* 89502350	REMOVE AND REINSTALL ELECTRIC CABLE FROM CONDUIT	FOOT	1475			730			745	
* 89502375	REMOVE EXISTING TRAFFIC SIGNAL EQUIPMENT	EACH	176			33	27	13	103	
* 89502380	REMOVE EXISTING HANDHOLE	EACH	3						3	
* 89502385	REMOVE EXISTING CONCRETE FOUNDATION	EACH	22			5	2	3	12	
542A1063	PIPE CULVERTS, CLASS A, TYPE 2 18"	FOOT	20	20						
550A0050	STORM SEWERS, CLASS A, TYPE 1 12"	FOOT	16	16						
X0322936	REMOVE EXISTING FLARED END SECTION	EACH	1	1						
X0324752	STORM SEWER TO BE FILLED	CU YD	1.7	1.7						

14

* SPECIALTY ITEM

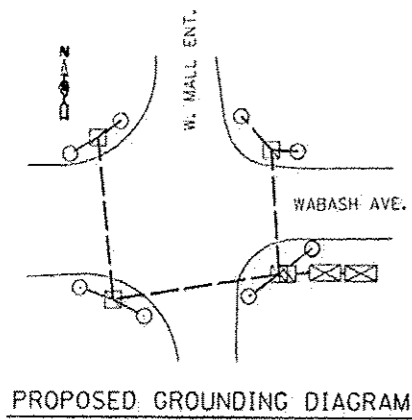
12-27-13

CODE NO.	ITEM	UNIT	TOTAL QUANTITY	ACNHPP	ACHSIP SAFETY	ACHSIP SAFETY	ACHSIP SAFETY	ACHSIP SAFETY	ACHSIP SAFETY	ACNHPP
				80%F,20%S ROADWAY 0005 URBAN	90%F,10%S ROADWAY 0021 URBAN	MALL ENTRANCE EAST + WEST 90% F / 10% S TRAFFIC SIGNALS 0021 URBAN	JEROME (Leonard) 90%F,05%S,05%C TRAFFIC SIGNALS 0021 URBAN	CONSTRUCTION CODE DRAWN BRIDGE 90% F / 0.67% S / 3.33% C TRAFFIC SIGNALS 0021 URBAN	SPRINGFIELD 90%F,05%S,05%C TRAFFIC SIGNALS 0021 URBAN	SPFLD SIDEWALKS 80% F,20%C TRAFFIC SIGNALS 0021 URBAN
X4401198	HOT-MIX ASPHALT SURFACE REMOVAL, VARIABLE DEPTH	SQ YD	89,135	89,135						
X4402020	CONCRETE MEDIAN SURFACE REMOVAL	SQ FT	9551		9551					
* X7200105	SIGN PANEL - TYPE 1 (SPECIAL)	SQ FT	449	449						
* X7200205	SIGN PANEL - TYPE 2 (SPECIAL)	SQ FT	163	163						
* X7240110	REMOVE SIGN PANEL ASSEMBLY - TYPE A (SPECIAL)	EACH	74	74						
* X7240200	REMOVE SIGN PANEL ASSEMBLY - TYPE B (SPECIAL)	EACH	19	19						
* X8140115	HANDHOLE TO BE ADJUSTED	EACH	4					4		
* X8440102	RELOCATE EXISTING LUMINAIRE	EACH	2					2		
Z0002900	BASE COURSE (OPTION)	SQ YD	915	68	847					
* Z0010688	CAMERA MOUNTING ASSEMBLY	EACH	24			7	4	2	11	
* Z0033072	VIDEO VEHICLE DETECTION SYSTEM	EACH	6			2	1		3	
40600895	CONSTRUCTING TEST STRIP	EACH	1	1						
70200100	NIGHTTIME WORK ZONE LIGHTING	L SUM	1	1						
∅ Z0076600	TRAINEES	HR	1000	1000						
∅ Z0076604	TRAINEES TRAINING PROGRAM GRADUATE	HR	1000	1000						

∅ 0042

* SPECIALTY ITEM

∆ 12-27-13

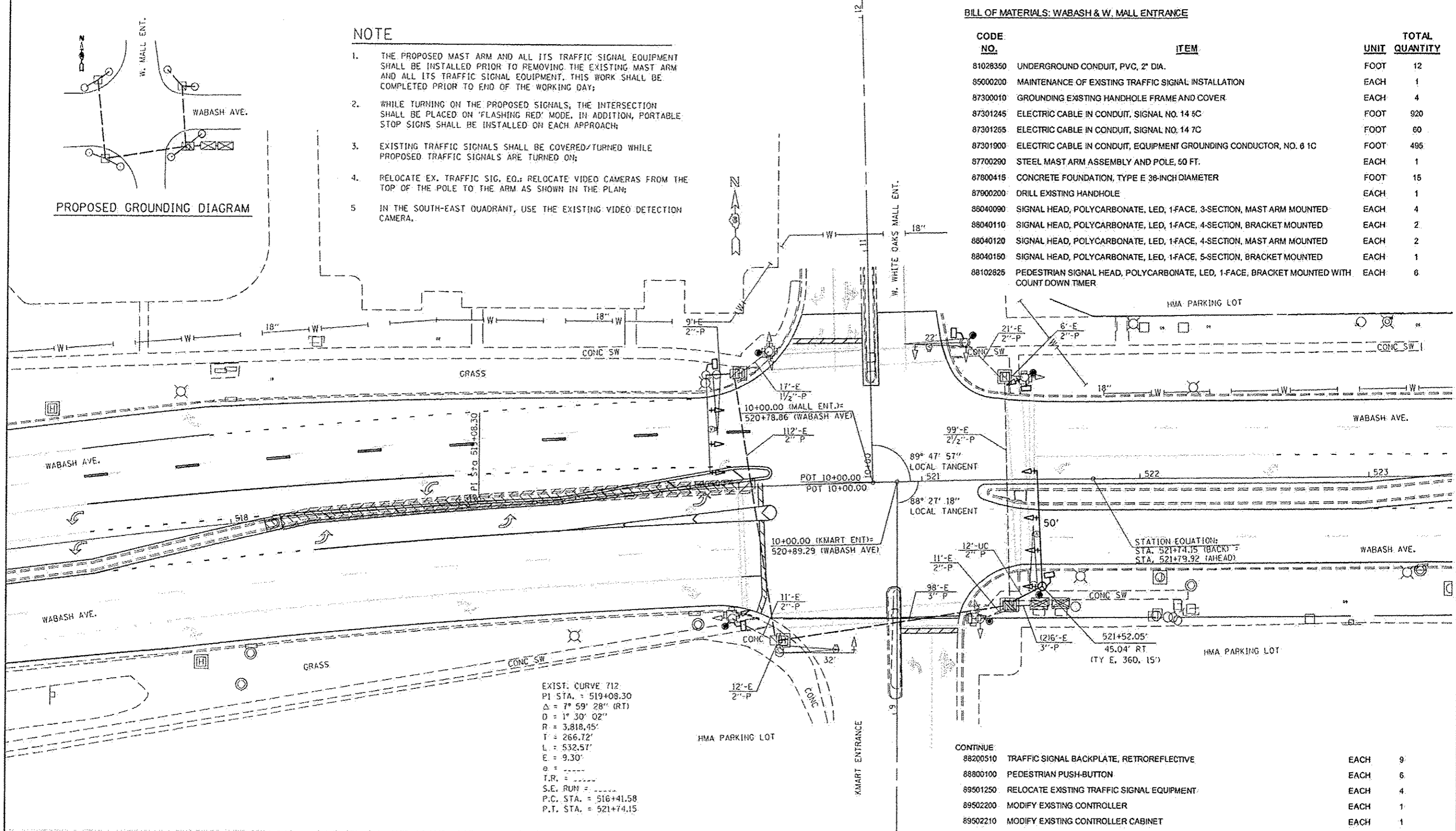


NOTE

1. THE PROPOSED MAST ARM AND ALL ITS TRAFFIC SIGNAL EQUIPMENT SHALL BE INSTALLED PRIOR TO REMOVING THE EXISTING MAST ARM AND ALL ITS TRAFFIC SIGNAL EQUIPMENT. THIS WORK SHALL BE COMPLETED PRIOR TO END OF THE WORKING DAY;
2. WHILE TURNING ON THE PROPOSED SIGNALS, THE INTERSECTION SHALL BE PLACED ON 'FLASHING RED' MODE. IN ADDITION, PORTABLE STOP SIGNS SHALL BE INSTALLED ON EACH APPROACH;
3. EXISTING TRAFFIC SIGNALS SHALL BE COVERED/TURNED WHILE PROPOSED TRAFFIC SIGNALS ARE TURNED ON;
4. RELOCATE EX. TRAFFIC SIG. EQ.; RELOCATE VIDEO CAMERAS FROM THE TOP OF THE POLE TO THE ARM AS SHOWN IN THE PLAN;
5. IN THE SOUTH-EAST QUADRANT, USE THE EXISTING VIDEO DETECTION CAMERA.

BILL OF MATERIALS: WABASH & W. MALL ENTRANCE

CODE NO.	ITEM	UNIT	TOTAL QUANTITY
81028350	UNDERGROUND CONDUIT, PVC, 2" DIA.	FOOT	12
85000200	MAINTENANCE OF EXISTING TRAFFIC SIGNAL INSTALLATION	EACH	1
87300010	GROUNDING EXISTING HANDHOLE FRAME AND COVER	EACH	4
87301245	ELECTRIC CABLE IN CONDUIT, SIGNAL NO. 14 5C	FOOT	920
87301255	ELECTRIC CABLE IN CONDUIT, SIGNAL NO. 14 7C	FOOT	60
87301900	ELECTRIC CABLE IN CONDUIT, EQUIPMENT GROUNDING CONDUCTOR, NO. 8 1C	FOOT	495
87700290	STEEL MAST ARM ASSEMBLY AND POLE, 50 FT.	EACH	1
87800415	CONCRETE FOUNDATION, TYPE E 36-INCH DIAMETER	FOOT	15
87900200	DRILL EXISTING HANDHOLE	EACH	1
88040090	SIGNAL HEAD, POLYCARBONATE, LED, 1-FACE, 3-SECTION, MAST ARM MOUNTED	EACH	4
88040110	SIGNAL HEAD, POLYCARBONATE, LED, 1-FACE, 4-SECTION, BRACKET MOUNTED	EACH	2
88040120	SIGNAL HEAD, POLYCARBONATE, LED, 1-FACE, 4-SECTION, MAST ARM MOUNTED	EACH	2
88040150	SIGNAL HEAD, POLYCARBONATE, LED, 1-FACE, 5-SECTION, BRACKET MOUNTED	EACH	1
88102825	PEDESTRIAN SIGNAL HEAD, POLYCARBONATE, LED, 1-FACE, BRACKET MOUNTED WITH COUNT DOWN TIMER	EACH	6



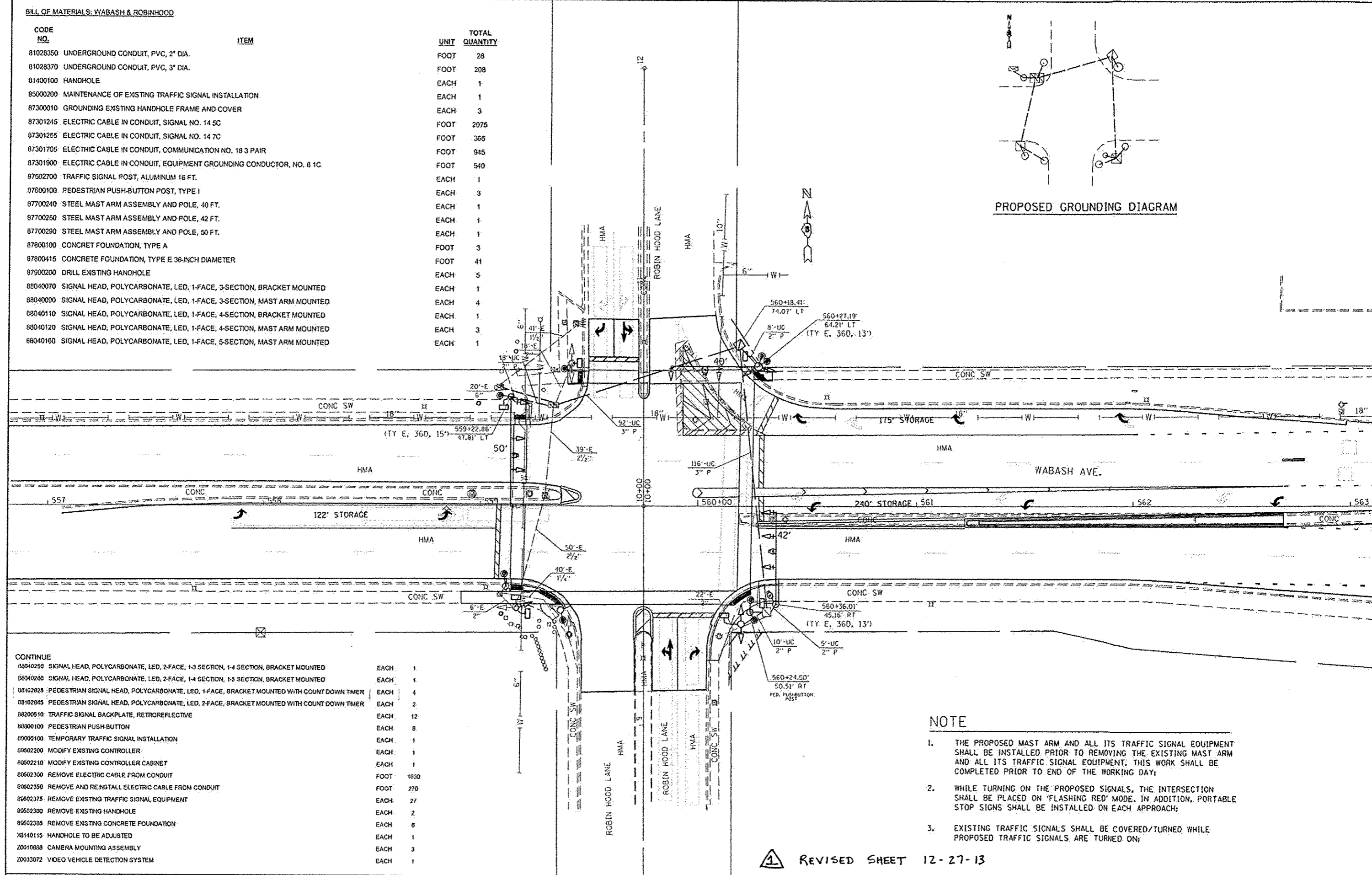
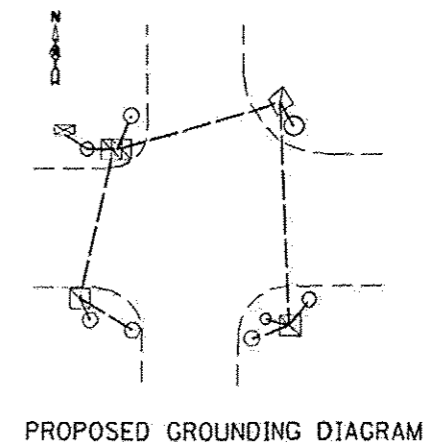
CONTINUE:

88200510	TRAFFIC SIGNAL BACKPLATE, RETROREFLECTIVE	EACH	9
88800100	PEDESTRIAN PUSH-BUTTON	EACH	6
89501250	RELOCATE EXISTING TRAFFIC SIGNAL EQUIPMENT	EACH	4
89502200	MODIFY EXISTING CONTROLLER	EACH	1
89502210	MODIFY EXISTING CONTROLLER CABINET	EACH	1
89502300	REMOVE ELECTRIC CABLE FROM CONDUIT	FOOT	875
89502350	REMOVE AND REINSTALL ELECTRIC CABLE FROM CONDUIT	FOOT	730
89502375	REMOVE EXISTING TRAFFIC SIGNAL EQUIPMENT	EACH	21
89502385	REMOVE EXISTING CONCRETE FOUNDATION	EACH	1
Z0010688	CAMERA MOUNTING ASSEMBLY	EACH	4
Z0033072	VIDEO VEHICLE DETECTION SYSTEM	EACH	1

REVISION **REVISED SHEET 12-27-13**

BILL OF MATERIALS: WABASH & ROBINHOOD

CODE NO.	ITEM	UNIT	TOTAL QUANTITY
81028350	UNDERGROUND CONDUIT, PVC, 2" DIA.	FOOT	28
81028370	UNDERGROUND CONDUIT, PVC, 3" DIA.	FOOT	208
81400100	HANDHOLE	EACH	1
85000200	MAINTENANCE OF EXISTING TRAFFIC SIGNAL INSTALLATION	EACH	1
87300010	GROUNDING EXISTING HANDHOLE FRAME AND COVER	EACH	3
87301245	ELECTRIC CABLE IN CONDUIT, SIGNAL NO. 14 5C	FOOT	2076
87301255	ELECTRIC CABLE IN CONDUIT, SIGNAL NO. 14 7C	FOOT	366
87301705	ELECTRIC CABLE IN CONDUIT, COMMUNICATION NO. 18 3 PAIR	FOOT	945
87301800	ELECTRIC CABLE IN CONDUIT, EQUIPMENT GROUNDING CONDUCTOR, NO. 6 1C	FOOT	540
87502700	TRAFFIC SIGNAL POST, ALUMINUM 16 FT.	EACH	1
87800100	PEDESTRIAN PUSH-BUTTON POST, TYPE I	EACH	3
87700240	STEEL MAST ARM ASSEMBLY AND POLE, 40 FT.	EACH	1
87700250	STEEL MAST ARM ASSEMBLY AND POLE, 42 FT.	EACH	1
87700290	STEEL MAST ARM ASSEMBLY AND POLE, 50 FT.	EACH	1
87800100	CONCRET FOUNDATION, TYPE A	FOOT	3
87800415	CONCRETE FOUNDATION, TYPE E 36-INCH DIAMETER	FOOT	41
87900200	DRILL EXISTING HANDHOLE	EACH	5
88040070	SIGNAL HEAD, POLYCARBONATE, LED, 1-FACE, 3-SECTION, BRACKET MOUNTED	EACH	1
88040090	SIGNAL HEAD, POLYCARBONATE, LED, 1-FACE, 3-SECTION, MAST ARM MOUNTED	EACH	4
88040110	SIGNAL HEAD, POLYCARBONATE, LED, 1-FACE, 4-SECTION, BRACKET MOUNTED	EACH	1
88040120	SIGNAL HEAD, POLYCARBONATE, LED, 1-FACE, 4-SECTION, MAST ARM MOUNTED	EACH	3
88040160	SIGNAL HEAD, POLYCARBONATE, LED, 1-FACE, 5-SECTION, MAST ARM MOUNTED	EACH	1



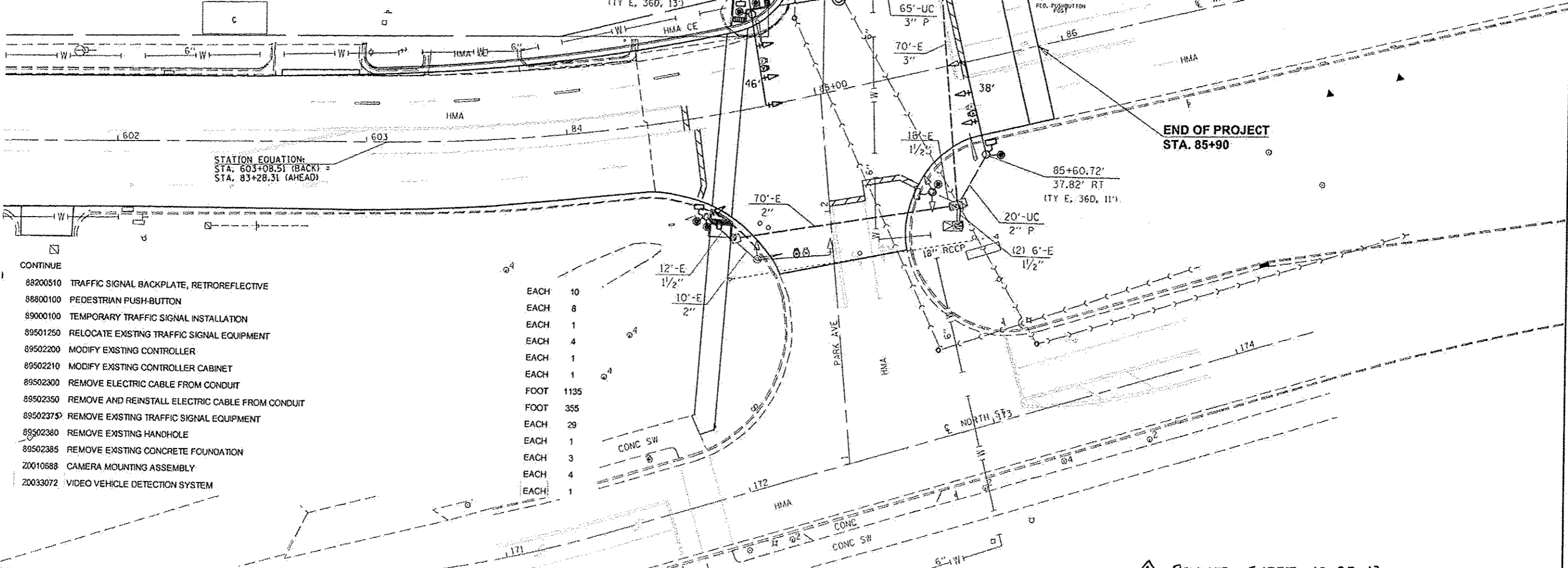
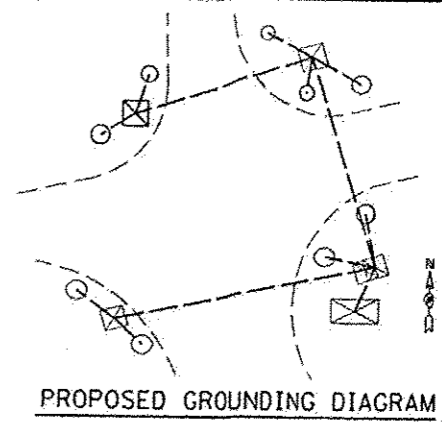
CONTINUE

88040250	SIGNAL HEAD, POLYCARBONATE, LED, 2-FACE, 1-3 SECTION, 1-4 SECTION, BRACKET MOUNTED	EACH	1
88040260	SIGNAL HEAD, POLYCARBONATE, LED, 2-FACE, 1-4 SECTION, 1-3 SECTION, BRACKET MOUNTED	EACH	1
88102825	PEDESTRIAN SIGNAL HEAD, POLYCARBONATE, LED, 1-FACE, BRACKET MOUNTED WITH COUNT DOWN TIMER	EACH	4
88102845	PEDESTRIAN SIGNAL HEAD, POLYCARBONATE, LED, 2-FACE, BRACKET MOUNTED WITH COUNT DOWN TIMER	EACH	2
88200510	TRAFFIC SIGNAL BACKPLATE, RETROREFLECTIVE	EACH	12
88900100	PEDESTRIAN PUSH-BUTTON	EACH	8
89000100	TEMPORARY TRAFFIC SIGNAL INSTALLATION	EACH	1
89502200	MODIFY EXISTING CONTROLLER	EACH	1
89502210	MODIFY EXISTING CONTROLLER CABINET	EACH	1
89502300	REMOVE ELECTRIC CABLE FROM CONDUIT	FOOT	1030
89502350	REMOVE AND REINSTALL ELECTRIC CABLE FROM CONDUIT	FOOT	270
89502375	REMOVE EXISTING TRAFFIC SIGNAL EQUIPMENT	EACH	27
89502380	REMOVE EXISTING HANDHOLE	EACH	2
89502385	REMOVE EXISTING CONCRETE FOUNDATION	EACH	6
X8140115	HANDHOLE TO BE ADJUSTED	EACH	1
Z0010658	CAMERA MOUNTING ASSEMBLY	EACH	3
Z0033072	VIDEO VEHICLE DETECTION SYSTEM	EACH	1

- NOTE**
1. THE PROPOSED MAST ARM AND ALL ITS TRAFFIC SIGNAL EQUIPMENT SHALL BE INSTALLED PRIOR TO REMOVING THE EXISTING MAST ARM AND ALL ITS TRAFFIC SIGNAL EQUIPMENT. THIS WORK SHALL BE COMPLETED PRIOR TO END OF THE WORKING DAY.
 2. WHILE TURNING ON THE PROPOSED SIGNALS, THE INTERSECTION SHALL BE PLACED ON 'FLASHING RED' MODE. IN ADDITION, PORTABLE STOP SIGNS SHALL BE INSTALLED ON EACH APPROACH.
 3. EXISTING TRAFFIC SIGNALS SHALL BE COVERED/TURNED WHILE PROPOSED TRAFFIC SIGNALS ARE TURNED ON.

REVISED SHEET 12-27-13

CODE NO.	ITEM	UNIT	TOTAL QUANTITY
81028350	UNDERGROUND CONDUIT, PVC, 2" DIA.	FOOT	18
81028370	UNDERGROUND CONDUIT, PVC, 3" DIA.	FOOT	65
81400100	HANDHOLE	EACH	1
82102250	LUMINAIRE, SODIUM VAPOR, HORIZONTAL MOUNT, 250 WATT	EACH	2
85000200	MAINTENANCE OF EXISTING TRAFFIC SIGNAL INSTALLATION	EACH	1
87300010	GROUNDING EXISTING HANDHOLE FRAME AND COVER	EACH	3
87301245	ELECTRIC CABLE IN CONDUIT, SIGNAL NO. 14 5C	FOOT	1110
87301900	ELECTRIC CABLE IN CONDUIT, EQUIPMENT GROUNDING CONDUCTOR, NO. 6 1C	FOOT	340
87502700	TRAFFIC SIGNAL POST, ALUMINUM 18 FT.	EACH	1
87600100	PEDESTRIAN PUSH-BUTTON POST, TYPE I	EACH	2
87702920	STEEL COMBINATION MAST ARM ASSEMBLY AND POLE, 38 FT.	EACH	1
87702960	STEEL COMBINATION MAST ARM ASSEMBLY AND POLE, 46 FT.	EACH	1
87800100	CONCRETE FOUNDATION, TYPE A	FOOT	3
87800415	CONCRETE FOUNDATION, TYPE E 36-INCH DIAMETER	FOOT	24
87900200	DRILL EXISTING HANDHOLE	EACH	2
88040990	SIGNAL HEAD, POLYCARBONATE, LED, 1-FACE, 3-SECTION, MAST ARM MOUNTED	EACH	4
88040110	SIGNAL HEAD, POLYCARBONATE, LED, 1-FACE, 4-SECTION, BRACKET MOUNTED	EACH	2
88040120	SIGNAL HEAD, POLYCARBONATE, LED, 1-FACE, 4-SECTION, MAST ARM MOUNTED	EACH	2
88040250	SIGNAL HEAD, POLYCARBONATE, LED, 2-FACE, 1-3 SECTION, 1-4 SECTION, BRACKET MOUNTED	EACH	1
88102825	PEDESTRIAN SIGNAL HEAD, POLYCARBONATE, LED, 1-FACE, BRACKET MOUNTED WITH COUNT DOWN TIMER	EACH	4
88102845	PEDESTRIAN SIGNAL HEAD, POLYCARBONATE, LED, 2-FACE, BRACKET MOUNTED WITH COUNT DOWN TIMER	EACH	2



CODE NO.	ITEM	UNIT	TOTAL QUANTITY
88200510	TRAFFIC SIGNAL BACKPLATE, RETROREFLECTIVE	EACH	10
88800100	PEDESTRIAN PUSH-BUTTON	EACH	8
89000100	TEMPORARY TRAFFIC SIGNAL INSTALLATION	EACH	1
89501250	RELOCATE EXISTING TRAFFIC SIGNAL EQUIPMENT	EACH	4
89502200	MODIFY EXISTING CONTROLLER	EACH	1
89502210	MODIFY EXISTING CONTROLLER CABINET	EACH	1
89502300	REMOVE ELECTRIC CABLE FROM CONDUIT	FOOT	1135
89502350	REMOVE AND REINSTALL ELECTRIC CABLE FROM CONDUIT	FOOT	355
89502375	REMOVE EXISTING TRAFFIC SIGNAL EQUIPMENT	EACH	29
89502380	REMOVE EXISTING HANDHOLE	EACH	1
89502385	REMOVE EXISTING CONCRETE FOUNDATION	EACH	3
Z0010588	CAMERA MOUNTING ASSEMBLY	EACH	4
Z0033072	VIDEO VEHICLE DETECTION SYSTEM	EACH	1

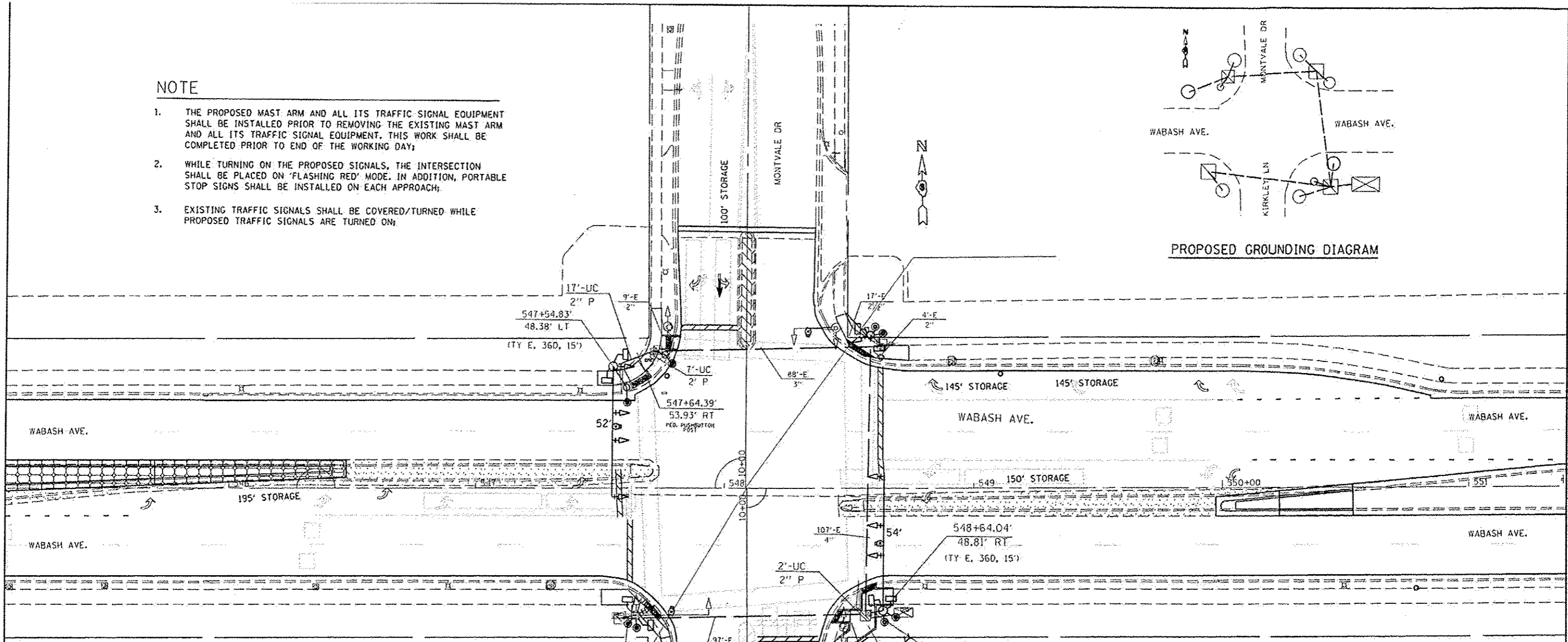
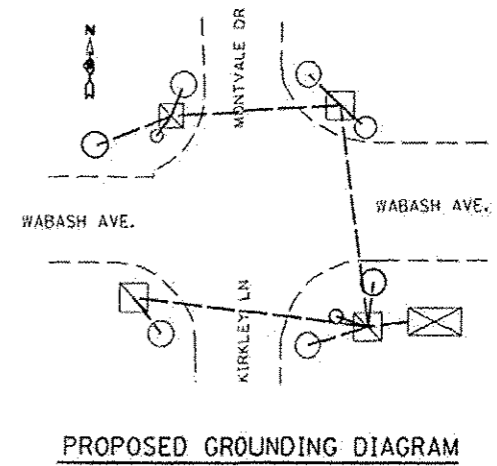
STATION EQUATION:
 STA. 603+08.51 (BACK) =
 STA. 83+28.31 (AHEAD)

END OF PROJECT
 STA. 85+90

REVISION 12-27-13

NOTE

1. THE PROPOSED MAST ARM AND ALL ITS TRAFFIC SIGNAL EQUIPMENT SHALL BE INSTALLED PRIOR TO REMOVING THE EXISTING MAST ARM AND ALL ITS TRAFFIC SIGNAL EQUIPMENT. THIS WORK SHALL BE COMPLETED PRIOR TO END OF THE WORKING DAY;
2. WHILE TURNING ON THE PROPOSED SIGNALS, THE INTERSECTION SHALL BE PLACED ON 'FLASHING RED' MODE. IN ADDITION, PORTABLE STOP SIGNS SHALL BE INSTALLED ON EACH APPROACH;
3. EXISTING TRAFFIC SIGNALS SHALL BE COVERED/TURNED WHILE PROPOSED TRAFFIC SIGNALS ARE TURNED ON;

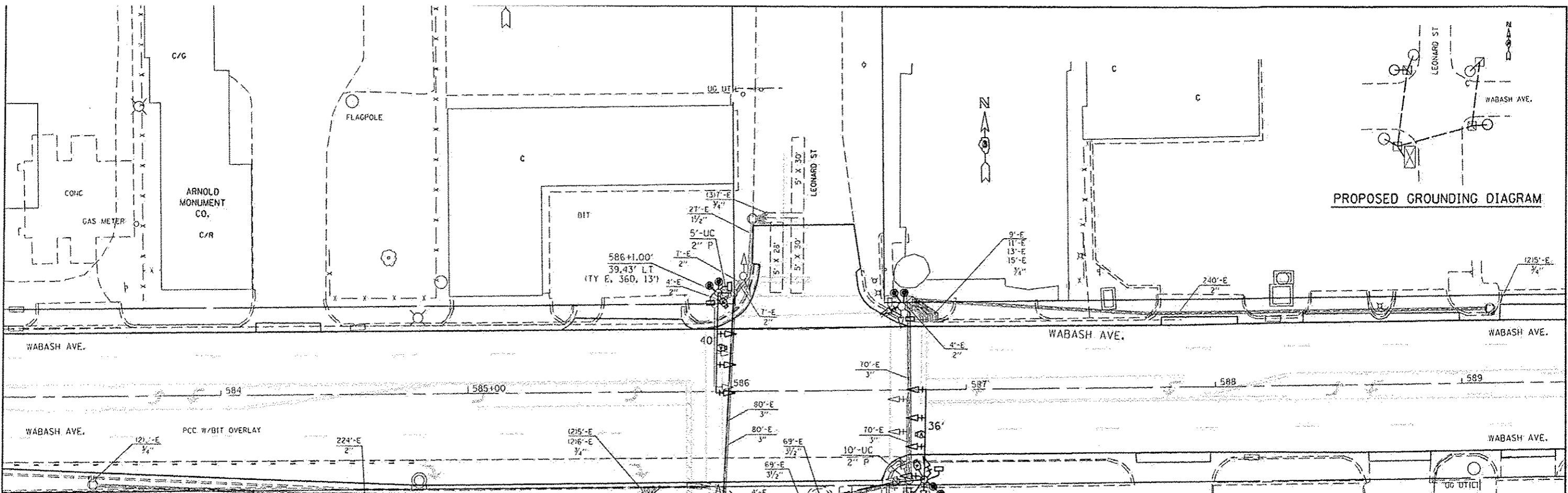


BILL OF MATERIALS: WABASH & KIRKLEY/MONTVALE

CODE NO.	ITEM	UNIT	TOTAL QUANTITY
81028350	UNDERGROUND CONDUIT, PVC, 2" DIA.	FOOT	31
85000200	MAINTENANCE OF EXISTING TRAFFIC SIGNAL INSTALLATION	EACH	1
87300010	GROUNDING EXISTING HANDHOLE FRAME AND COVER.	EACH	4
87301245	ELECTRIC CABLE IN CONDUIT, SIGNAL NO. 14 5C	FOOT	1445
87301705	ELECTRIC CABLE IN CONDUIT, COMMUNICATION NO. 18 3 PAIR	FOOT	690
87301900	ELECTRIC CABLE IN CONDUIT, EQUIPMENT GROUNDING CONDUCTOR, NO. 6 1C	FOOT	455
87502700	TRAFFIC SIGNAL POST, ALUMINUM 16FT.	EACH	1
87600100	PEDESTRIAN PUSH-BUTTON POST, TYPE I	EACH	2
87700300	STEEL MAST ARM ASSEMBLY AND POLE, 52 FT.	EACH	1
87700310	STEEL MAST ARM ASSEMBLY AND POLE, 54 FT.	EACH	1
87800100	CONCRETE FOUNDATION, TYPE A	FOOT	3
87800415	CONCRETE FOUNDATION, TYPE E 38-INCH DIAMETER	FOOT	30
87900200	DRILL EXISTING HANDHOLE	EACH	4
88040070	SIGNAL HEAD, POLYCARBONATE, LED, 1-FACE, 3-SECTION, BRACKET MOUNTED	EACH	1
88040090	SIGNAL HEAD, POLYCARBONATE, LED, 1-FACE, 3-SECTION, MAST ARM MOUNTED	EACH	4
88040110	SIGNAL HEAD, POLYCARBONATE, LED, 1-FACE, 4-SECTION, BRACKET MOUNTED	EACH	2
88040120	SIGNAL HEAD, POLYCARBONATE, LED, 1-FACE, 4-SECTION, MAST ARM MOUNTED	EACH	2

88102845	PEDESTRIAN SIGNAL HEAD, POLYCARBONATE, LED, 2-FACE, BRACKET MOUNTED WITH COUNT DOWN TIMER	EACH	5
88200510	TRAFFIC SIGNAL BACKPLATE, RETROREFLECTIVE	EACH	9
88800100	PEDESTRIAN PUSH-BUTTON	EACH	8
89502200	MODIFY EXISTING CONTROLLER	EACH	1
89502210	MODIFY EXISTING CONTROLLER CABINET	EACH	1
89502300	REMOVE ELECTRIC CABLE FROM CONDUIT	FOOT	845
89502375	REMOVE EXISTING TRAFFIC SIGNAL EQUIPMENT.	EACH	27
89502385	REMOVE EXISTING CONCRETE FOUNDATION	EACH	3
X8140115	HANDHOLE TO BE ADJUSTED	EACH	3
20010688	CAMERA MOUNTING ASSEMBLY	EACH	4
20033072	VIDEO VEHICLE DETECTION SYSTEM	EACH	1

REVIS **REVISED SHEET 12-27-13**



BILL OF MATERIALS: WABASH & LEONARD

CODE NO.	ITEM	UNIT	TOTAL QUANTITY
81028350	UNDERGROUND CONDUIT, PVC, 2" DIA.	FOOT	15
85000200	MAINTENANCE OF EXISTING TRAFFIC SIGNAL INSTALLATION	EACH	1
87300010	GROUNDING EXISTING HANDHOLE FRAME AND COVER	EACH	4
87301245	ELECTRIC CABLE IN CONDUIT, SIGNAL NO. 14 5C	FOOT	280
87301255	ELECTRIC CABLE IN CONDUIT, SIGNAL NO. 14 7C	FOOT	480
87301705	ELECTRIC CABLE IN CONDUIT, COMMUNICATION NO. 18 3 PAIR	FOOT	605
87301900	ELECTRIC CABLE IN CONDUIT, EQUIPMENT GROUNDING CONDUCTOR, NO. 6 1C	FOOT	320
87700220	STEEL MAST ARM ASSEMBLY AND POLE, 36 FT.	EACH	1
87700240	STEEL MAST ARM ASSEMBLY AND POLE, 40 FT.	EACH	1
87800415	CONCRETE FOUNDATION, TYPE E 36-INCH DIAMETER	FOOT	24
87900200	DRILL EXISTING HANDHOLE	EACH	2
88040090	SIGNAL HEAD, POLYCARBONATE, LED, 1-FACE, 3-SECTION, MAST ARM MOUNTED	EACH	4
88040110	SIGNAL HEAD, POLYCARBONATE, LED, 1-FACE, 4-SECTION, BRACKET MOUNTED	EACH	2
88040120	SIGNAL HEAD, POLYCARBONATE, LED, 1-FACE, 4-SECTION, MAST ARM MOUNTED	EACH	2
88040320	SIGNAL HEAD, POLYCARBONATE, LED, 3-FACE, 1-4-SECTION, 2-5-SECTION, BRACKET MOUNTED	EACH	1
88102845	PEDESTRIAN SIGNAL HEAD, POLYCARBONATE, LED, 2-FACE, BRACKET MOUNTED WITH COUNT DOWN TIMER	EACH	4
88200510	TRAFFIC SIGNAL BACKPLATE, RETROREFLECTIVE	EACH	11
88800100	PEDESTRIAN PUSH-BUTTON	EACH	8
89502200	MODIFY EXISTING CONTROLLER	EACH	1
89502210	MODIFY EXISTING CONTROLLER CABINET	EACH	1
89502300	REMOVE ELECTRIC CABLE FROM CONDUIT	FOOT	1010
89502375	REMOVE EXISTING TRAFFIC SIGNAL EQUIPMENT	EACH	27
89502385	REMOVE EXISTING CONCRETE FOUNDATION	EACH	2
Z0010688	CAMERA MOUNTING ASSEMBLY	EACH	4
Z0033072	VIDEO VEHICLE DETECTION SYSTEM	EACH	1

NOTE

1. THE PROPOSED MAST ARM AND ALL ITS TRAFFIC SIGNAL EQUIPMENT SHALL BE INSTALLED PRIOR TO REMOVING THE EXISTING MAST ARM AND ALL ITS TRAFFIC SIGNAL EQUIPMENT. THIS WORK SHALL BE COMPLETED PRIOR TO END OF THE WORKING DAY.
2. WHILE TURNING ON THE PROPOSED SIGNALS, THE INTERSECTION SHALL BE PLACED ON 'FLASHING RED' MODE. IN ADDITION, PORTABLE STOP SIGNS SHALL BE INSTALLED ON EACH APPROACH.
3. EXISTING TRAFFIC SIGNALS SHALL BE COVERED/TURNED WHILE PROPOSED TRAFFIC SIGNALS ARE TURNED ON.

REVIS REVISED SHEET 12-27-13

