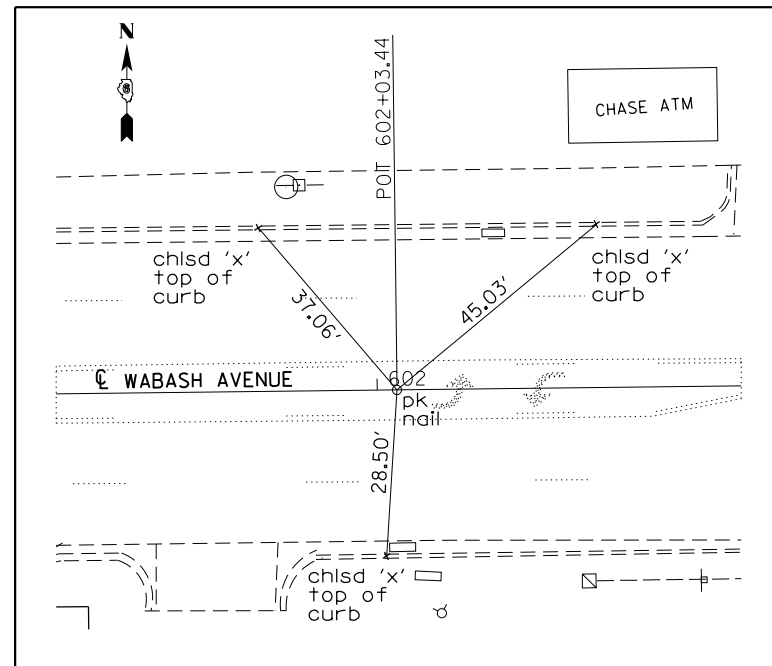
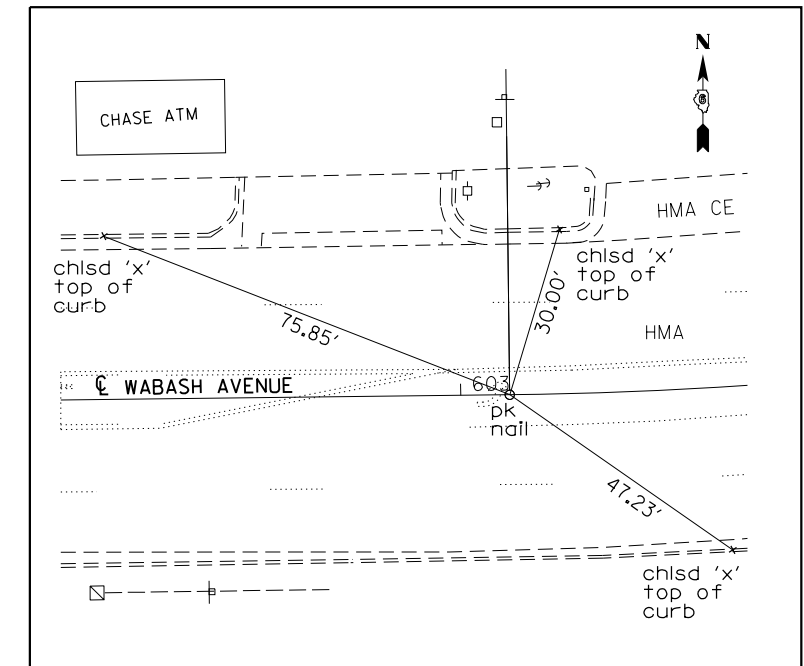


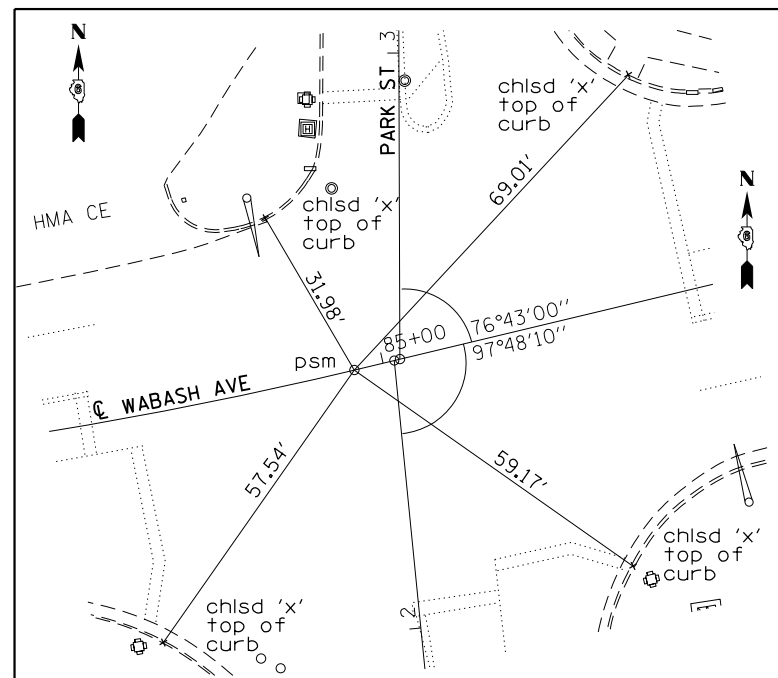
#203027
P.I. 84+11.93
(PK NAIL IN CHISELED 'X')



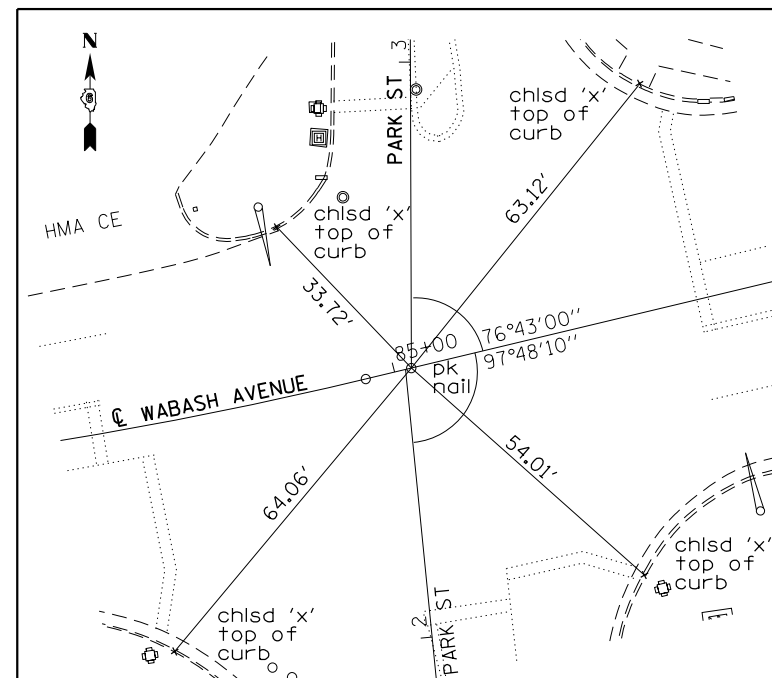
POT 602+03.44
(PK NAIL IN CHISELED 'X')



PC, STATION EQUATION:
603+08.51 (BACK) = 83+28.31 (AHEAD)
(PK NAIL IN CHISELED 'X')



PT 84+94.85
(PERMANENT SURVEY MARKER)



#203036
P.O.T. 2+46.86 (PARK ST.) =
P.O.T. 85+02.99 (WABASH AVE.)
(PK NAIL IN CHISELED 'X')

FILE NAME =	USER NAME = sparksgw	DESIGNED -	RTS	REVISED -	
c:\pw\work\p\dot\sparksgw\10296742\06729-shr-ATB.dgn		DRAWN -	RTS	REVISED -	
Default		CHECKED -	RTS	REVISED -	
	PLOT SCALE = 100.0000' / 1in.	DATE -	10-02-13	REVISED -	
	PLOT DATE = Nov-08-2013 12:07:45PM				

STATE OF ILLINOIS
DEPARTMENT OF TRANSPORTATION

ALIGNMENT CROSS TIES

SCALE: SHEET 2 OF 2 SHEETS STA. TO STA.

F.A.P. RTE.	SECTION	COUNTY	TOTAL SHEETS	SHEET NO.
664	•	SANGAMON	126	22
ILLINOIS FED. AID PROJECT			CONTRACT NO. 72F29	