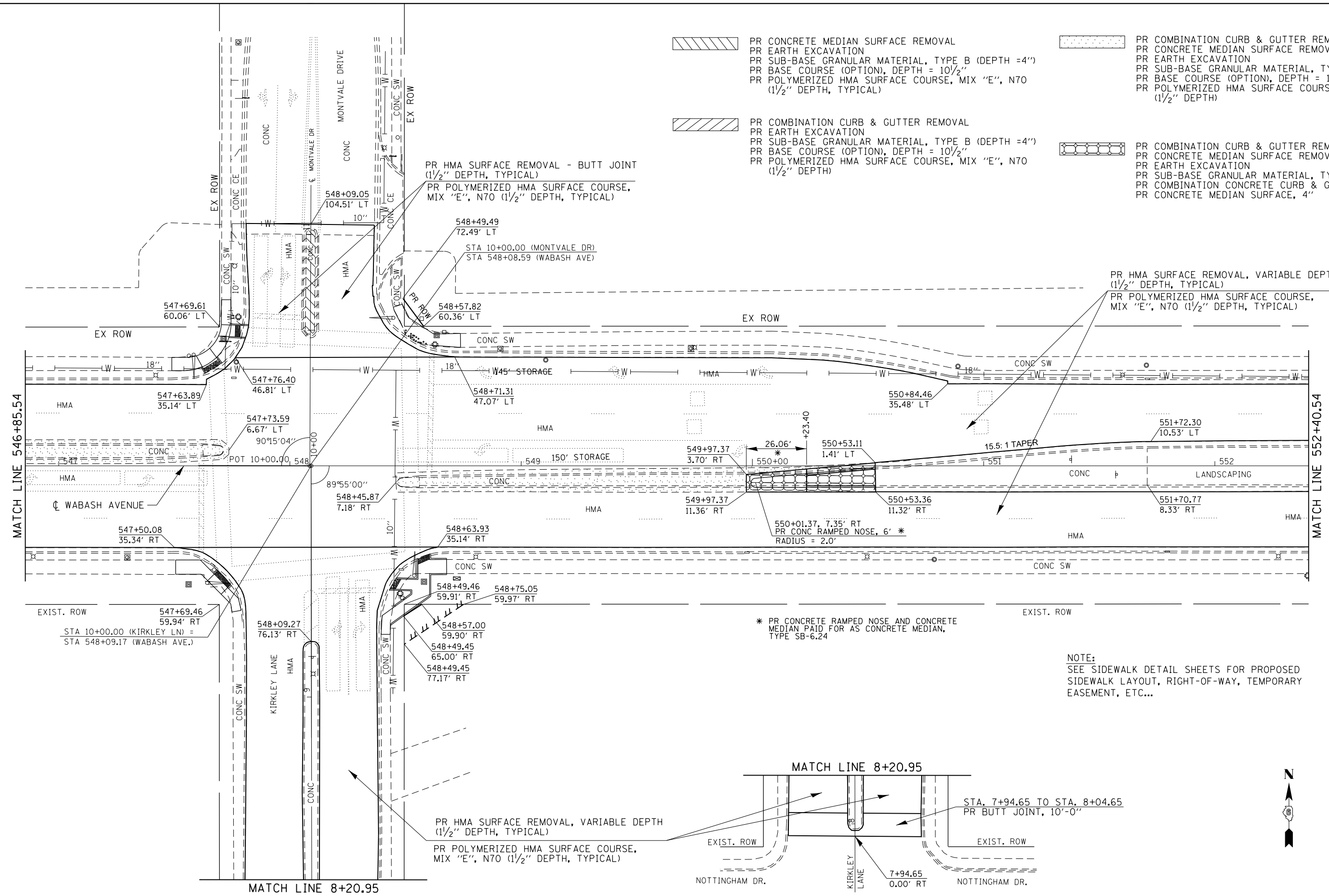


PR CONCRETE MEDIAN SURFACE REMOVAL  
 PR EARTH EXCAVATION  
 PR SUB-BASE GRANULAR MATERIAL, TYPE B (DEPTH = 4")  
 PR BASE COURSE (OPTION), DEPTH = 10 1/2"  
 PR POLYMERIZED HMA SURFACE COURSE, MIX "E", N70 (1 1/2" DEPTH, TYPICAL)

PR COMBINATION CURB & GUTTER REMOVAL  
 PR CONCRETE MEDIAN SURFACE REMOVAL  
 PR EARTH EXCAVATION  
 PR SUB-BASE GRANULAR MATERIAL, TYPE B (DEPTH = 4")  
 PR BASE COURSE (OPTION), DEPTH = 10 1/2"  
 PR POLYMERIZED HMA SURFACE COURSE, MIX "E", N70 (1 1/2" DEPTH)

PR COMBINATION CURB & GUTTER REMOVAL  
 PR EARTH EXCAVATION  
 PR SUB-BASE GRANULAR MATERIAL, TYPE B (DEPTH = 4")  
 PR BASE COURSE (OPTION), DEPTH = 10 1/2"  
 PR POLYMERIZED HMA SURFACE COURSE, MIX "E", N70 (1 1/2" DEPTH)

PR COMBINATION CURB & GUTTER REMOVAL  
 PR CONCRETE MEDIAN SURFACE REMOVAL  
 PR EARTH EXCAVATION  
 PR SUB-BASE GRANULAR MATERIAL, TYPE B (DEPTH = 4")  
 PR COMBINATION CONCRETE CURB & GUTTER, TYPE B-6.24  
 PR CONCRETE MEDIAN SURFACE, 4"



PR HMA SURFACE REMOVAL, VARIABLE DEPTH (1 1/2" DEPTH, TYPICAL)  
 PR POLYMERIZED HMA SURFACE COURSE, MIX "E", N70 (1 1/2" DEPTH, TYPICAL)

\* PR CONCRETE RAMPED NOSE AND CONCRETE MEDIAN PAID FOR AS CONCRETE MEDIAN, TYPE SB-6.24

NOTE:  
 SEE SIDEWALK DETAIL SHEETS FOR PROPOSED SIDEWALK LAYOUT, RIGHT-OF-WAY, TEMPORARY EASEMENT, ETC...



FILE NAME =	USER NAME = sparksgw	DESIGNED -	RTS	REVISED -	
ei:\pw\work\p\id\sparksgw\10296742\06729-sht-plan.dgn		DRAWN -	RTS	REVISED -	
Default	PLOT SCALE = 40.0000' / in.	CHECKED -	RTS	REVISED -	
	PLOT DATE = Nov-08-2013 12:08:45PM	DATE -		REVISED -	

**STATE OF ILLINOIS  
 DEPARTMENT OF TRANSPORTATION**

**PLAN SHEET - WABASH AVE.**

SCALE: SHEET 11 OF 21 SHEETS STA. TO STA.

F.A.P. RTE.	SECTION	COUNTY	TOTAL SHEETS	SHEET NO.
664	(G)RS-15,TS-9,(2)RS-9,TS-2	SANGAMON	126	46
CONTRACT #72F29				
ILLINOIS FED. AID PROJECT				