

**PAVEMENT MARKING LEGEND**

- ① THERMOPLASTIC PAVEMENT MARKING - LINE 5"
- ② THERMOPLASTIC PAVEMENT MARKING - LINE 5" (DOUBLE YELLOW)
- ③ THERMOPLASTIC PAVEMENT MARKING - LINE 6"
- ④ THERMOPLASTIC PAVEMENT MARKING - LINE 6" (6' SKIP, 2' DASH)
- ⑤ THERMOPLASTIC PAVEMENT MARKING - LINE 8"
- ⑥ THERMOPLASTIC PAVEMENT MARKING - LINE 12"
- ⑦ PREFORMED PLASTIC PAVEMENT MARKING, TYPE B - INLAID - 24" LINE
- ⑧ THERMOPLASTIC PAVEMENT MARKING - LINE 5" (30' SKIP, 10' DASH)

➤ PREFORMED PLASTIC PAVEMENT MARKING, TYPE B - INLAID - LETTERS AND SYMBOLS (WHITE)

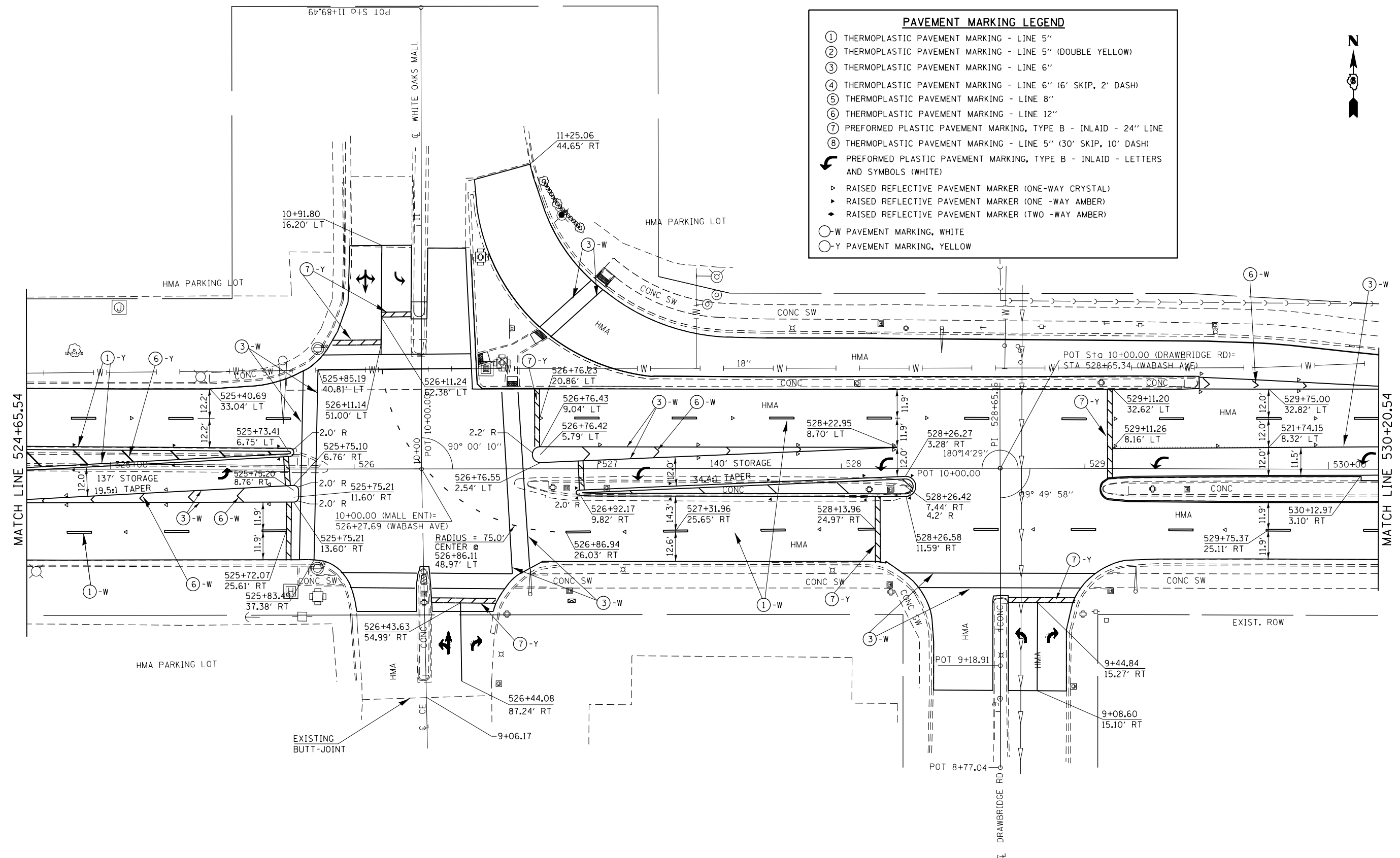
▶ RAISED REFLECTIVE PAVEMENT MARKER (ONE-WAY CRYSTAL)

▶ RAISED REFLECTIVE PAVEMENT MARKER (ONE-WAY AMBER)

▶ RAISED REFLECTIVE PAVEMENT MARKER (TWO-WAY AMBER)

○-W PAVEMENT MARKING, WHITE

○-Y PAVEMENT MARKING, YELLOW



FILE NAME =	USER NAME = sparksgw	DESIGNED - RTS	REVISED -	<b>STATE OF ILLINOIS DEPARTMENT OF TRANSPORTATION</b>	<b>PAVEMENT MARKING - WABASH AVE.</b>		F.A.P. RTE. = 664	SECTION =	COUNTY = SANGAMON	TOTAL SHEETS = 126	SHEET NO. = 63	
Default	Plot Scale = 40.0000' / in.	CHECKED -	REVISED -		SCALE:	SHEET 7 OF 21 SHEETS	STA. TO STA.	ILLINOIS FED. AID PROJECT				
	PLOT DATE = Nov-08-2013 12:08:56PM	DATE = 10-11-2013	REVISED -		CONTRACT NO. 72F29							
(GORS-15,TS-9,(2)RS-9,TS-2												