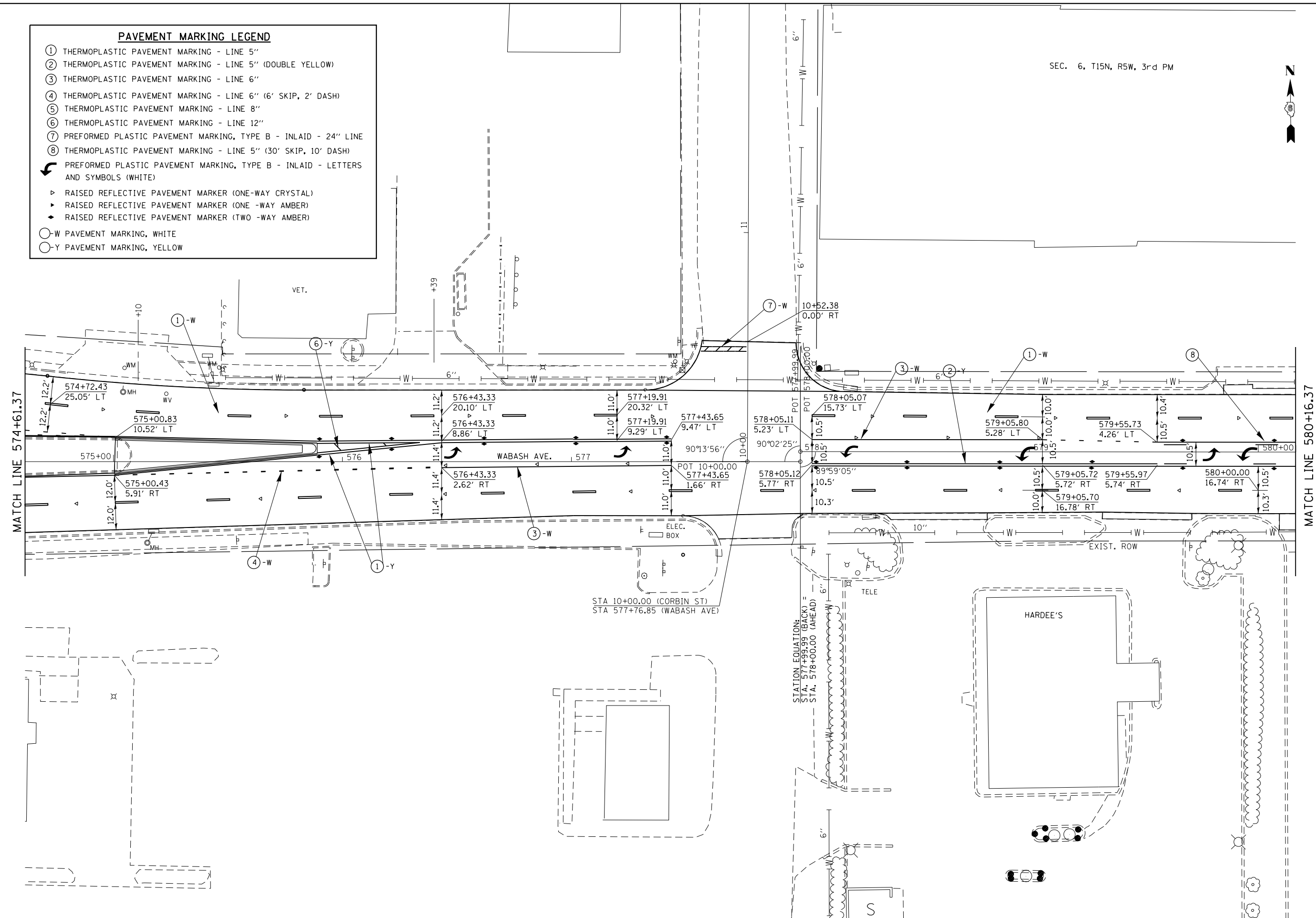


**PAVEMENT MARKING LEGEND**

- ① THERMOPLASTIC PAVEMENT MARKING - LINE 5"
- ② THERMOPLASTIC PAVEMENT MARKING - LINE 5" (DOUBLE YELLOW)
- ③ THERMOPLASTIC PAVEMENT MARKING - LINE 6"
- ④ THERMOPLASTIC PAVEMENT MARKING - LINE 6" (6' SKIP, 2' DASH)
- ⑤ THERMOPLASTIC PAVEMENT MARKING - LINE 8"
- ⑥ THERMOPLASTIC PAVEMENT MARKING - LINE 12"
- ⑦ PREFORMED PLASTIC PAVEMENT MARKING, TYPE B - INLAID - 24" LINE
- ⑧ THERMOPLASTIC PAVEMENT MARKING - LINE 5" (30' SKIP, 10' DASH)
- ↪ PREFORMED PLASTIC PAVEMENT MARKING, TYPE B - INLAID - LETTERS AND SYMBOLS (WHITE)
- ▷ RAISED REFLECTIVE PAVEMENT MARKER (ONE-WAY CRYSTAL)
- ▷ RAISED REFLECTIVE PAVEMENT MARKER (ONE -WAY AMBER)
- ◆ RAISED REFLECTIVE PAVEMENT MARKER (TWO -WAY AMBER)
- W PAVEMENT MARKING, WHITE
- Y PAVEMENT MARKING, YELLOW

SEC. 6, T15N, R5W, 3rd PM



FILE NAME =	USER NAME = sparksgw	DESIGNED -	RTS	REVISED -	
Default	ct:\pw\work\p\midot\sparksgw\10296742\06729-sht-pmk.dgn	DRAWN -	RTS	REVISED -	
	PLOT SCALE = 40.0000' / in.	CHECKED -		REVISED -	
	PLOT DATE = Nov-08-2013 12:09:08PM	DATE -	10-11-2013	REVISED -	

**STATE OF ILLINOIS  
DEPARTMENT OF TRANSPORTATION**

<b>PAVEMENT MARKING - WABASH AVE.</b>	
SCALE:	SHEET 16 OF 21 SHEETS STA. TO STA.

F.A.P. RTE.	SECTION	COUNTY	TOTAL SHEETS	SHEET NO.
664	.	SANGAMON	126	72
ILLINOIS FED. AID PROJECT			CONTRACT NO. 72F29	