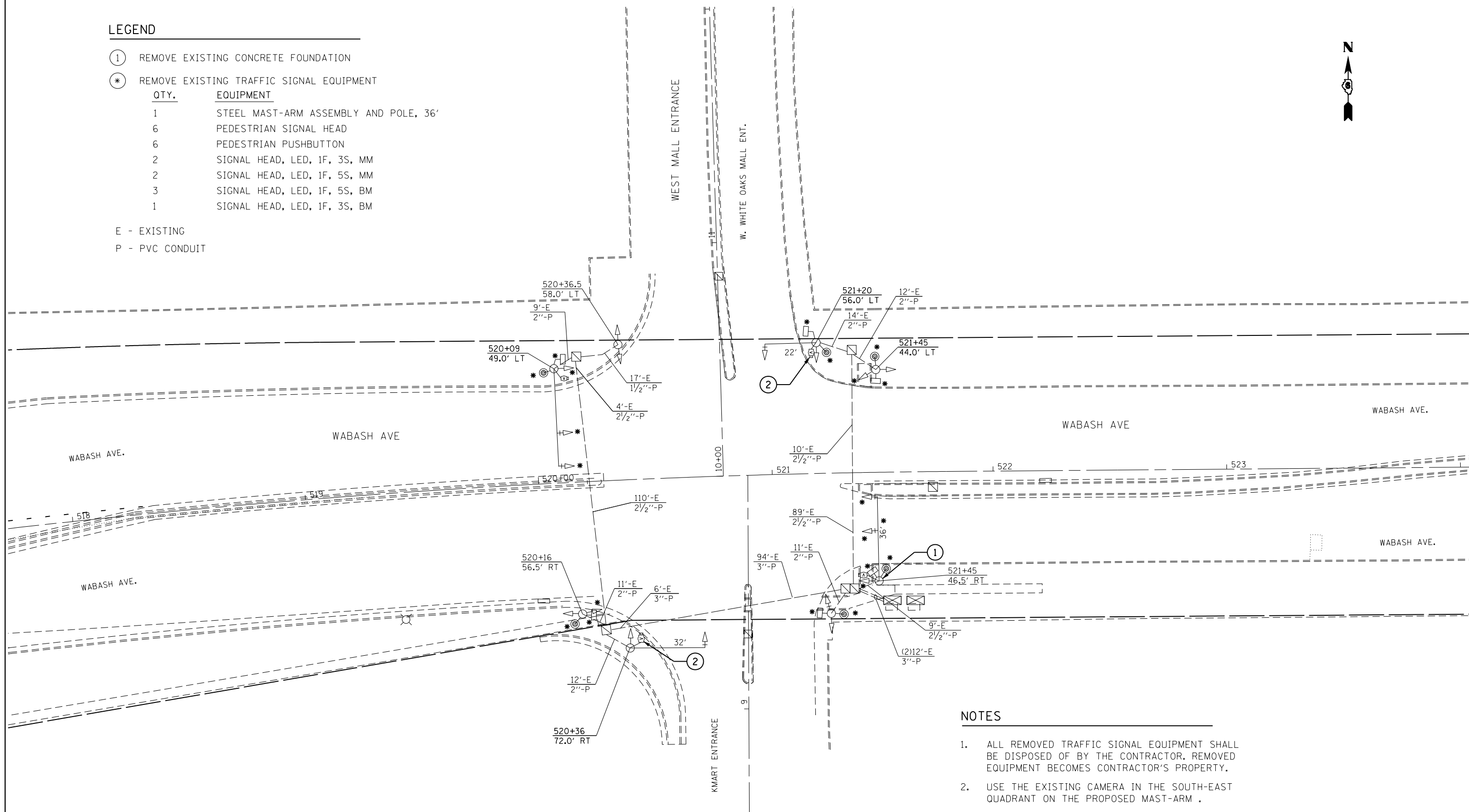


LEGEND

- ① REMOVE EXISTING CONCRETE FOUNDATION
 - * REMOVE EXISTING TRAFFIC SIGNAL EQUIPMENT
- | QTY. | EQUIPMENT |
|------|---------------------------------------|
| 1 | STEEL MAST-ARM ASSEMBLY AND POLE, 36' |
| 6 | PEDESTRIAN SIGNAL HEAD |
| 6 | PEDESTRIAN PUSHBUTTON |
| 2 | SIGNAL HEAD, LED, 1F, 3S, MM |
| 2 | SIGNAL HEAD, LED, 1F, 5S, MM |
| 3 | SIGNAL HEAD, LED, 1F, 5S, BM |
| 1 | SIGNAL HEAD, LED, 1F, 3S, BM |

E - EXISTING
P - PVC CONDUIT



NOTES

- ALL REMOVED TRAFFIC SIGNAL EQUIPMENT SHALL BE DISPOSED OF BY THE CONTRACTOR. REMOVED EQUIPMENT BECOMES CONTRACTOR'S PROPERTY.
- USE THE EXISTING CAMERA IN THE SOUTH-EAST QUADRANT ON THE PROPOSED MAST-ARM .

FILE NAME =	USER NAME = sparksgw	DESIGNED - DMS	REVISED -
c:\pwwork\pwwork\sparksgw\10296742\06729-sht-trf-signal.dgn		DRAWN - DMS	REVISED -
Default	PLOT SCALE = 40.0000' / in.	CHECKED -	REVISED -
	PLOT DATE = Nov-08-2013 12:09:14PM	DATE -	REVISED -

**STATE OF ILLINOIS
DEPARTMENT OF TRANSPORTATION**

**EXISTING TRAFFIC SIGNAL PLAN SHEET
WABASH AVE. & W. WHITE OAKS MALL ENTRANCE**

SCALE: SHEET OF SHEETS STA. TO STA.

F.A.P. RTE.	SECTION	COUNTY	TOTAL SHEETS	SHEET NO.
664	.	SANGAMON	126	78
			CONTRACT NO. 72F29	