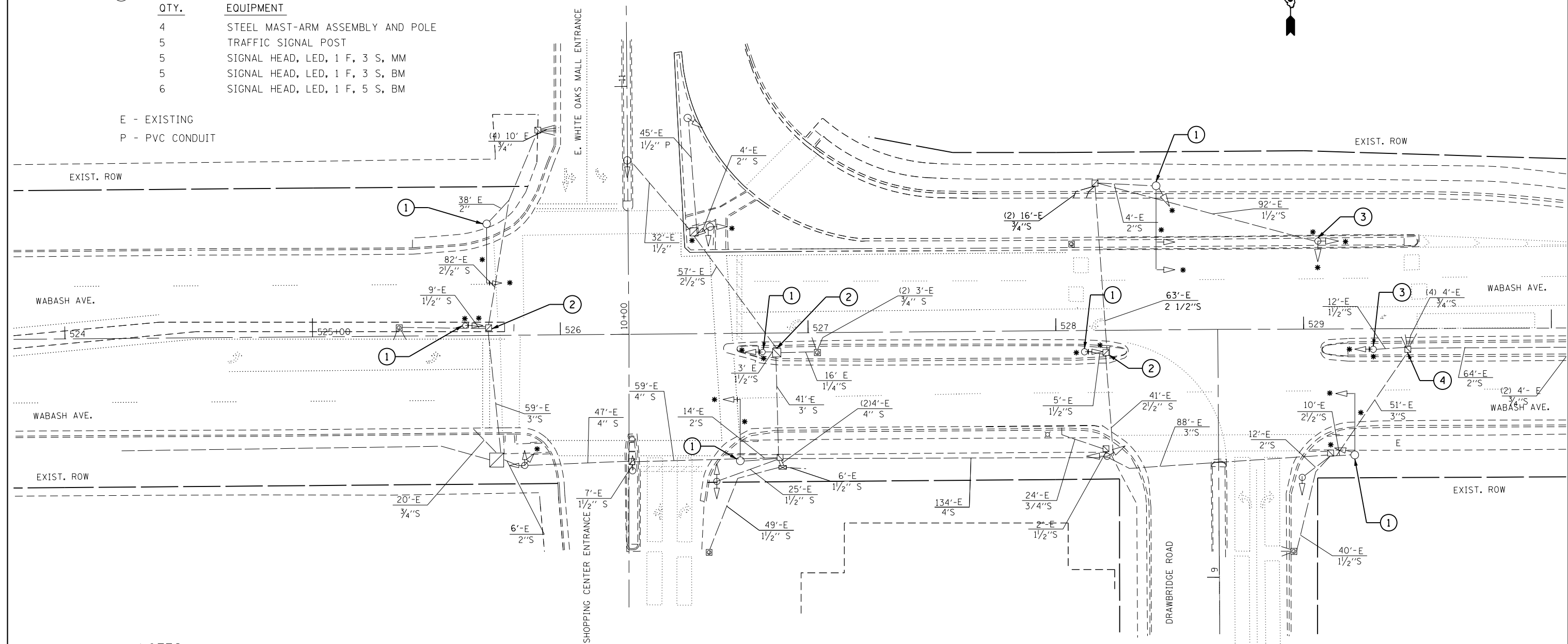


LEGEND

- ① REMOVE EXISTING CONCRETE FOUNDATION
- ② REMOVE EXISTING HANDHOLE
- ③ ABANDON EXISTING FOUNDATION (SEE NOTE #2)
- ④ ABANDON EXISTING HANDHOLE
- * REMOVE EXISTING TRAFFIC SIGNAL EQUIPMENT

QTY.	EQUIPMENT
4	STEEL MAST-ARM ASSEMBLY AND POLE
5	TRAFFIC SIGNAL POST
5	SIGNAL HEAD, LED, 1 F, 3 S, MM
5	SIGNAL HEAD, LED, 1 F, 3 S, BM
6	SIGNAL HEAD, LED, 1 F, 5 S, BM

E - EXISTING
P - PVC CONDUIT



NOTES

1. ALL REMOVED TRAFFIC SIGNAL EQUIPMENT SHALL BE DISPOSED OF BY THE CONTRACTOR. REMOVED EQUIPMENT BECOMES CONTRACTOR'S PROPERTY.
2. WHEN ABANDONING THE EXISTING FOUNDATION, CONTRACTOR SHALL CUT AND FLUSH THE ANCHOR BOLTS FROM THE FOUNDATION.

FILE NAME =	USER NAME = sparksgw	DESIGNED - DMS	REVISED -
c:\pwork\pwork\sparksgw\10296742\06729-sht-trf-signal.dgn		DRAWN - DMS	REVISED -
Default	PLOT SCALE = 40.0000' / in.	CHECKED -	REVISED -
	PLOT DATE = Nov-08-2013 12:09:17PM	DATE -	REVISED -

**STATE OF ILLINOIS
DEPARTMENT OF TRANSPORTATION**

**EXISTING TRAFFIC SIGNAL PLAN SHEET
WABASH AVE. & DRAWBRIDGE RD AND E. WHITE OAKS MALL ENTRANCE**

SCALE:	SHEET	OF	SHEETS	STA.	TO	STA.
--------	-------	----	--------	------	----	------

F.A.P. RTE.	SECTION	COUNTY	TOTAL SHEETS	SHEET NO.
664	.	SANGAMON	126	82
ILLINOIS FED. AID PROJECT			CONTRACT NO. 72F29	