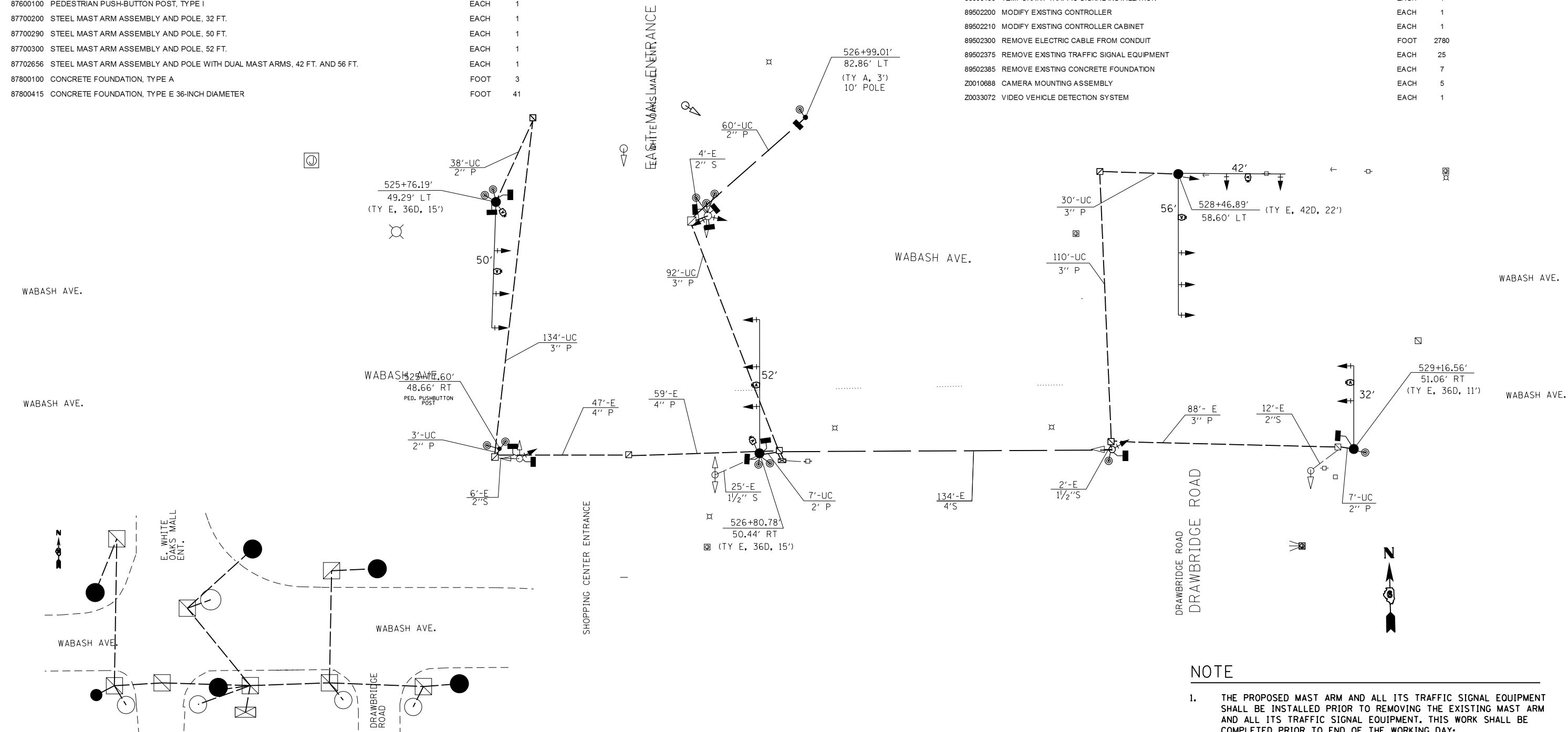


CODE NO.	ITEM	UNIT	TOTAL QUANTITY
81028350	UNDERGROUND CONDUIT, PVC, 2" DIA.	FOOT	115
81028370	UNDERGROUND CONDUIT, PVC, 3" DIA.	FOOT	455
85000200	MAINTENANCE OF EXISTING TRAFFIC SIGNAL INSTALLATION	EACH	1
87300010	GROUNDING EXISTING HANDHOLE FRAME AND COVER	EACH	7
87301245	ELECTRIC CABLE IN CONDUIT, SIGNAL NO. 14 5C	FOOT	4115
87301255	ELECTRIC CABLE IN CONDUIT, SIGNAL NO. 14 7C	FOOT	515
87301705	ELECTRIC CABLE IN CONDUIT, COMMUNICATION NO. 18 3 PAIR	FOOT	1955
87301900	ELECTRIC CABLE IN CONDUIT, EQUIPMENT GROUNDING CONDUCTOR, NO. 6 1C	FOOT	965
87502640	TRAFFIC SIGNAL POST, ALUMINUM 10 FT.	EACH	1
87600100	PEDESTRIAN PUSH-BUTTON POST, TYPE I	EACH	1
87700200	STEEL MAST ARM ASSEMBLY AND POLE, 32 FT.	EACH	1
87700290	STEEL MAST ARM ASSEMBLY AND POLE, 50 FT.	EACH	1
87700300	STEEL MAST ARM ASSEMBLY AND POLE, 52 FT.	EACH	1
87702656	STEEL MAST ARM ASSEMBLY AND POLE WITH DUAL MAST ARMS, 42 FT. AND 56 FT.	EACH	1
87800100	CONCRETE FOUNDATION, TYPE A	FOOT	3
87800415	CONCRETE FOUNDATION, TYPE E 36-INCH DIAMETER	FOOT	41

CONTINUE

87800420	CONCRETE FOUNDATION, TYPE E 42-INCH DIAMETER	FOOT	22
87900200	DRILL EXISTING HANDHOLE	EACH	11
88040070	SIGNAL HEAD, POLYCARBONATE, LED, 1-FACE, 3-SECTION, BRACKET MOUNTED	EACH	2
88040090	SIGNAL HEAD, POLYCARBONATE, LED, 1-FACE, 3-SECTION, MAST ARM MOUNTED	EACH	10
88040110	SIGNAL HEAD, POLYCARBONATE, LED, 1-FACE, 4-SECTION, BRACKET MOUNTED	EACH	3
88040120	SIGNAL HEAD, POLYCARBONATE, LED, 1-FACE, 4-SECTION, MAST ARM MOUNTED	EACH	3
88040160	SIGNAL HEAD, POLYCARBONATE, LED, 1-FACE, 5-SECTION, MAST ARM MOUNTED	EACH	1
88102825	PEDESTRIAN SIGNAL HEAD, POLYCARBONATE, LED, 1-FACE, BRACKET MOUNTED WITH COUNT DOWN TIMER	EACH	4
88102845	PEDESTRIAN SIGNAL HEAD, POLYCARBONATE, LED, 2-FACE, BRACKET MOUNTED WITH COUNT DOWN TIMER	EACH	4
88200510	TRAFFIC SIGNAL BACKPLATE, RETROREFLECTIVE	EACH	17
88800100	PEDESTRIAN PUSH-BUTTON	EACH	12
89000100	TEMPORARY TRAFFIC SIGNAL INSTALLATION	EACH	1
89502200	MODIFY EXISTING CONTROLLER	EACH	1
89502210	MODIFY EXISTING CONTROLLER CABINET	EACH	1
89502300	REMOVE ELECTRIC CABLE FROM CONDUIT	FOOT	2780
89502375	REMOVE EXISTING TRAFFIC SIGNAL EQUIPMENT	EACH	25
89502385	REMOVE EXISTING CONCRETE FOUNDATION	EACH	7
Z0010688	CAMERA MOUNTING ASSEMBLY	EACH	5
Z0033072	VIDEO VEHICLE DETECTION SYSTEM	EACH	1



PROPOSED GROUNDING DIAGRAM

NOTE

1. THE PROPOSED MAST ARM AND ALL ITS TRAFFIC SIGNAL EQUIPMENT SHALL BE INSTALLED PRIOR TO REMOVING THE EXISTING MAST ARM AND ALL ITS TRAFFIC SIGNAL EQUIPMENT. THIS WORK SHALL BE COMPLETED PRIOR TO END OF THE WORKING DAY;
2. WHILE TURNING ON THE PROPOSED SIGNALS, THE INTERSECTION SHALL BE PLACED ON 'FLASHING RED' MODE. IN ADDITION, PORTABLE STOP SIGNS SHALL BE INSTALLED ON EACH APPROACH;
3. EXISTING TRAFFIC SIGNALS SHALL BE COVERED/TURNED WHILE PROPOSED TRAFFIC SIGNALS ARE TURNED ON;

FILE NAME =	USER NAME = sparksgw	DESIGNED - DMS	REVISED -
ei:\pw\work\p\dot\sparksgw\10296742\06729\29-sht-trf-signal.dgn		DRAWN - DMS	REVISED -
Default	PLOT SCALE = 40.0000' / in.	CHECKED -	REVISED -
	PLOT DATE = Nov-08-2013 12:09:18PM	DATE -	REVISED -

STATE OF ILLINOIS
DEPARTMENT OF TRANSPORTATION

PROPOSED TRAFFIC SIGNAL PLAN SHEET
WABASH AVE. & DRAWBRIDGE RD AND E. WHITE OAKS MALL ENTRANCE

SCALE:	SHEET	OF	SHEETS	STA.	TO	STA.
--------	-------	----	--------	------	----	------

F.A.P. RTE.	SECTION	COUNTY	TOTAL SHEETS	SHEET NO.
664	.	SANGAMON	126	83
			CONTRACT NO. 72F29	
ILLINOIS FED. AID PROJECT				