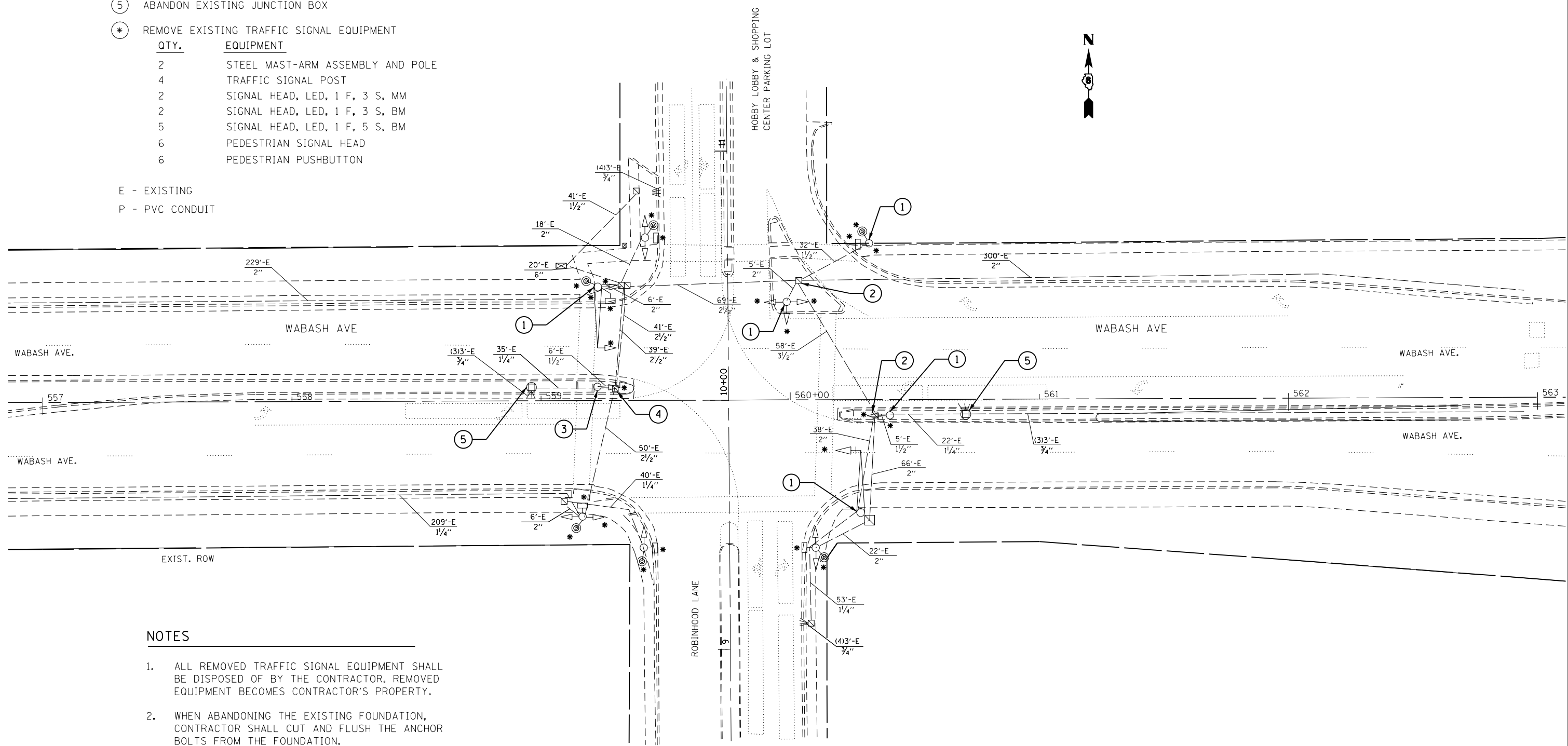


LEGEND

- ① REMOVE EXISTING CONCRETE FOUNDATION
- ② REMOVE EXISTING HANDHOLE
- ③ ABANDON EXISTING FOUNDATION (SEE NOTE #2)
- ④ ABANDON EXISTING HANDHOLE
- ⑤ ABANDON EXISTING JUNCTION BOX
- * REMOVE EXISTING TRAFFIC SIGNAL EQUIPMENT

QTY.	EQUIPMENT
2	STEEL MAST-ARM ASSEMBLY AND POLE
4	TRAFFIC SIGNAL POST
2	SIGNAL HEAD, LED, 1 F, 3 S, MM
2	SIGNAL HEAD, LED, 1 F, 3 S, BM
5	SIGNAL HEAD, LED, 1 F, 5 S, BM
6	PEDESTRIAN SIGNAL HEAD
6	PEDESTRIAN PUSHBUTTON

E - EXISTING
P - PVC CONDUIT



NOTES

1. ALL REMOVED TRAFFIC SIGNAL EQUIPMENT SHALL BE DISPOSED OF BY THE CONTRACTOR. REMOVED EQUIPMENT BECOMES CONTRACTOR'S PROPERTY.
2. WHEN ABANDONING THE EXISTING FOUNDATION, CONTRACTOR SHALL CUT AND FLUSH THE ANCHOR BOLTS FROM THE FOUNDATION.

FILE NAME = c:\pwwork\pwwid\sparksgw\10296742\06729-sht-trf-signal.dgn	USER NAME = sparksgw	DESIGNED - DMS	REVISED -	STATE OF ILLINOIS DEPARTMENT OF TRANSPORTATION	EXISTING TRAFFIC SIGNAL PLAN SHEET WABASH AVE. & ROBINHOOD LN.				F.A.P. RTE. 664	SECTION •	COUNTY SANGAMON	TOTAL SHEETS 126	SHEET NO. 88
Default	PLOT SCALE = 40.0000' / in.	CHECKED -	REVISED -		SCALE:	SHEET	OF	SHEETS	STA.	TO	STA.	CONTRACT NO. 72F29	
	PLOT DATE = Nov-08-2013 12:09:21PM	DATE -	REVISED -		ILLINOIS FED. AID PROJECT								
(G:\RS-15,TS-9,(2)RS-9,TS-2													