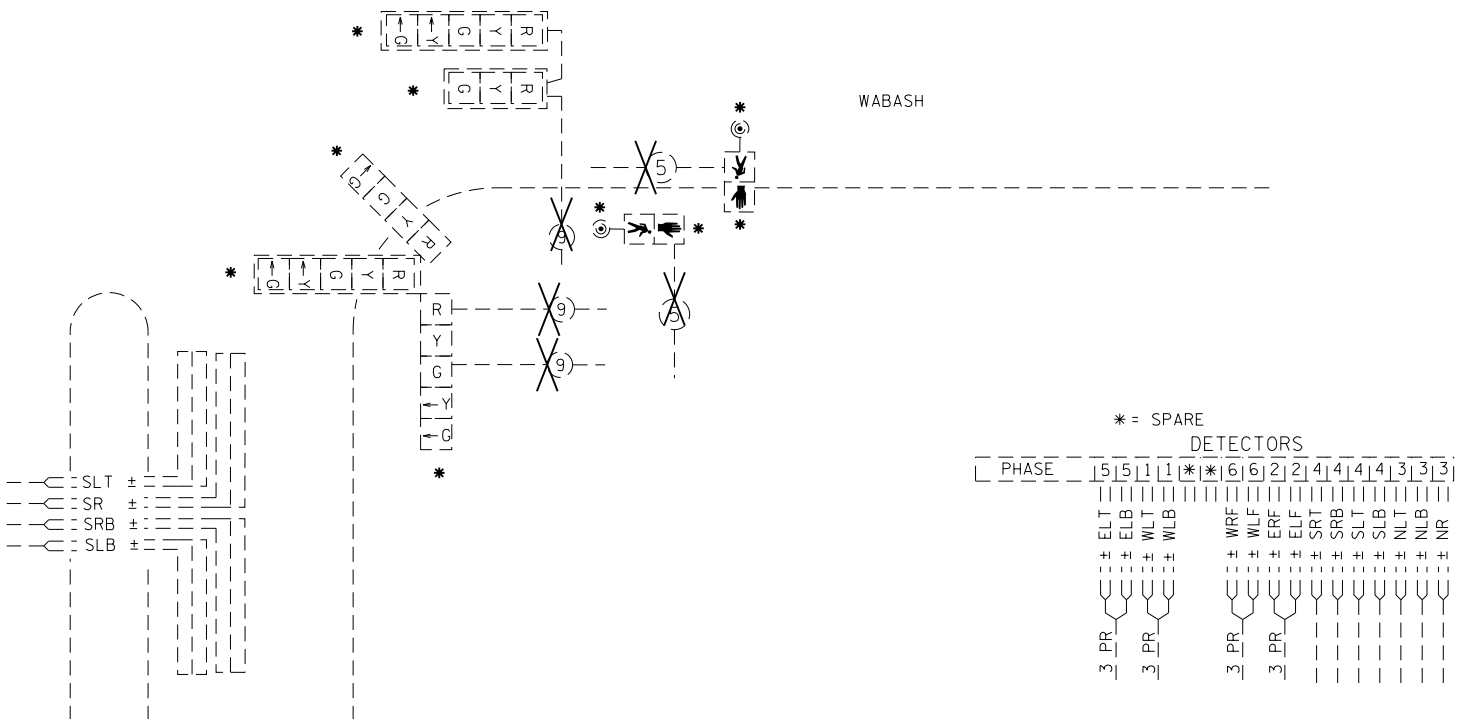
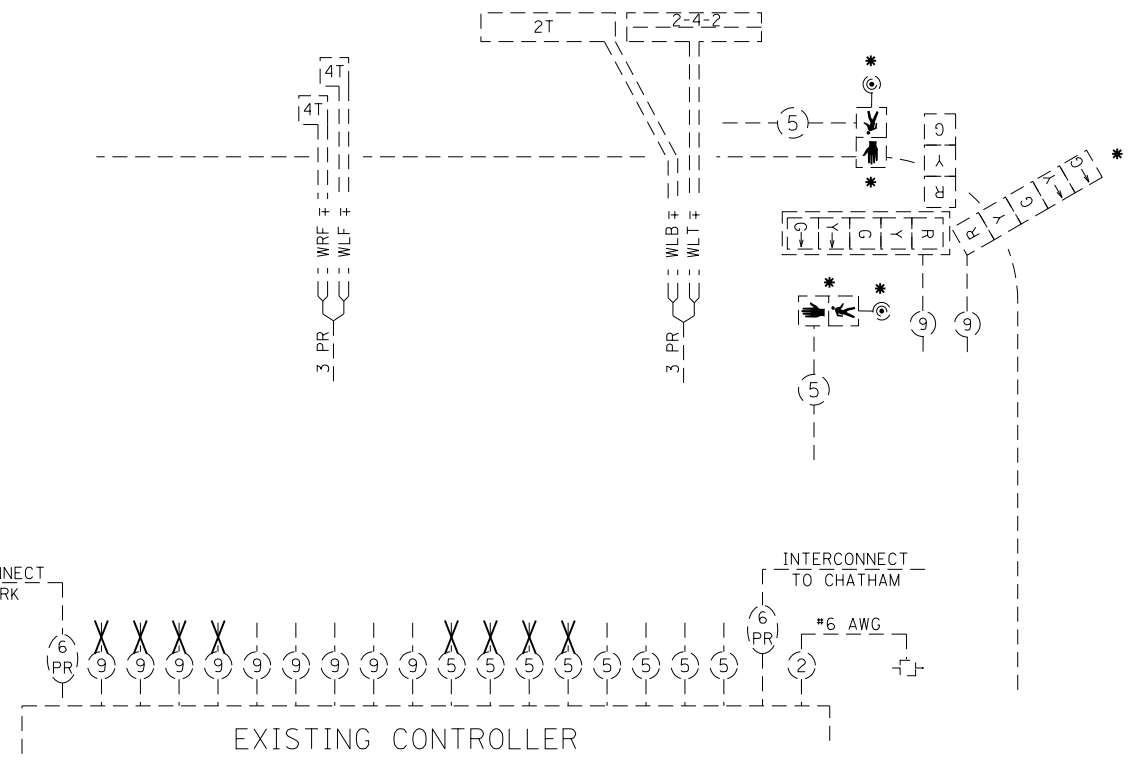
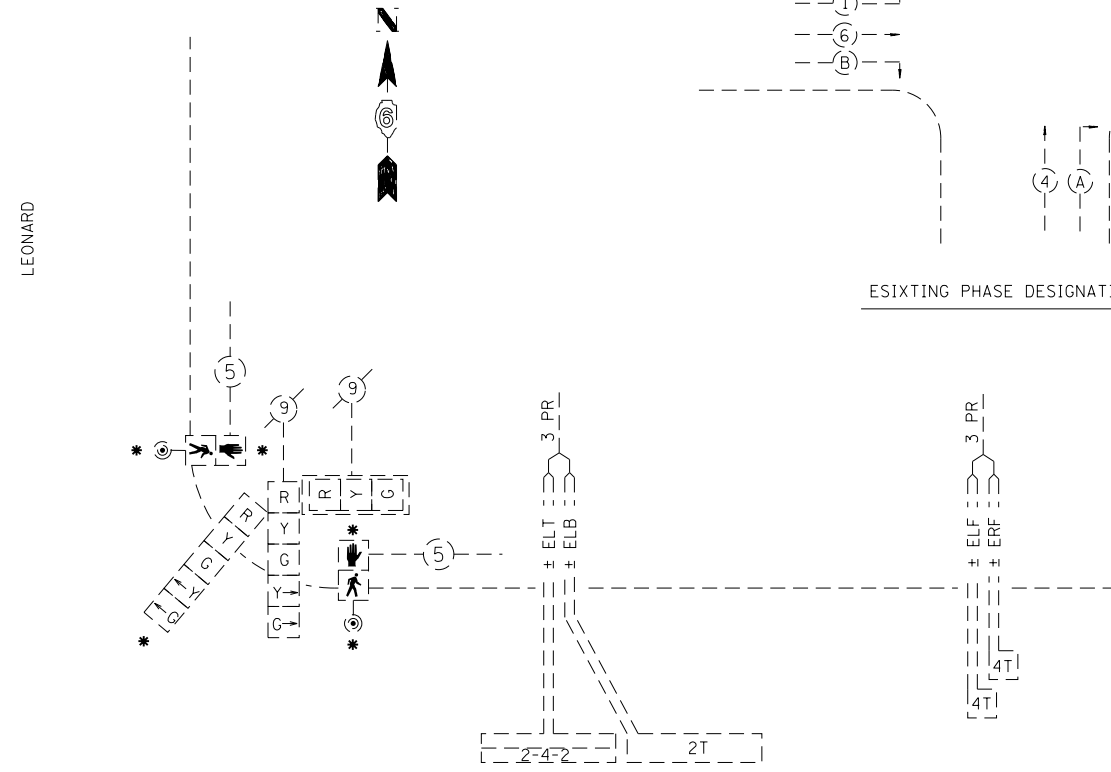
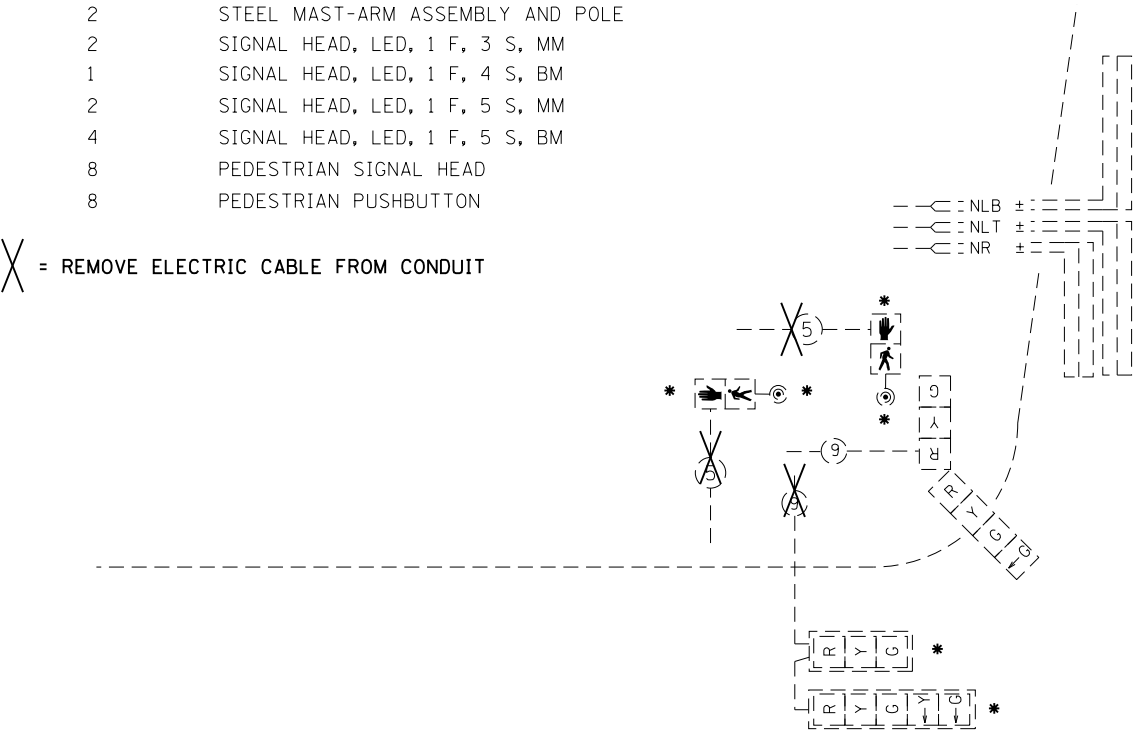
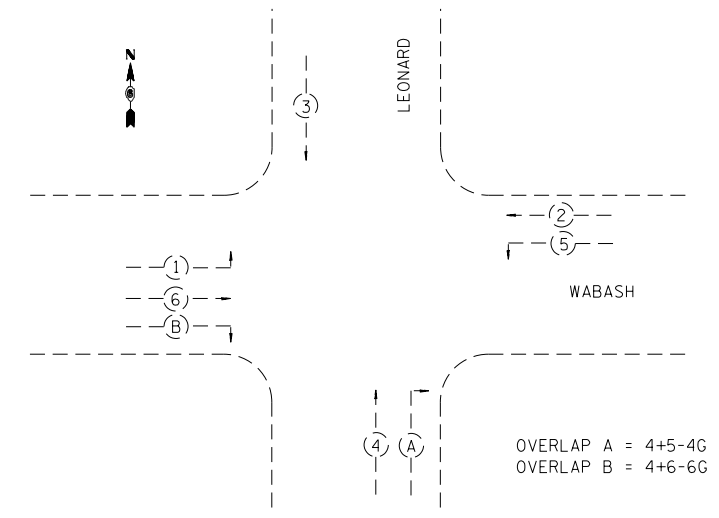


LEGEND

- (*) REMOVE EXISTING TRAFFIC SIGNAL EQUIPMENT
- QTY. EQUIPMENT
- 2 STEEL MAST-ARM ASSEMBLY AND POLE
- 2 SIGNAL HEAD, LED, 1 F, 3 S, MM
- 1 SIGNAL HEAD, LED, 1 F, 4 S, BM
- 2 SIGNAL HEAD, LED, 1 F, 5 S, MM
- 4 SIGNAL HEAD, LED, 1 F, 5 S, BM
- 8 PEDESTRIAN SIGNAL HEAD
- 8 PEDESTRIAN PUSHBUTTON

X = REMOVE ELECTRIC CABLE FROM CONDUIT



FILE NAME =	USER NAME = sparksgw	DESIGNED - DMS	REVISED -
ct:\pw\work\pwidot\sparksgw\10296742\06729-sht-trf-signal.dgn		DRAWN - DMS	REVISED -
Default	PLOT SCALE = 40.0000' / in.	CHECKED -	REVISED -
	PLOT DATE = Nov-08-2013 12:09:38PM	DATE -	REVISED -

**STATE OF ILLINOIS
DEPARTMENT OF TRANSPORTATION**

**EXISTING CABLE DIAGRAM
WABASH AVE. & LEONARD ST.**

F.A.P. RTE.	SECTION	COUNTY	TOTAL SHEETS	SHEET NO.
664	*	SANGAMON	126	107
ILLINOIS FED. AID PROJECT			CONTRACT NO.	72F29