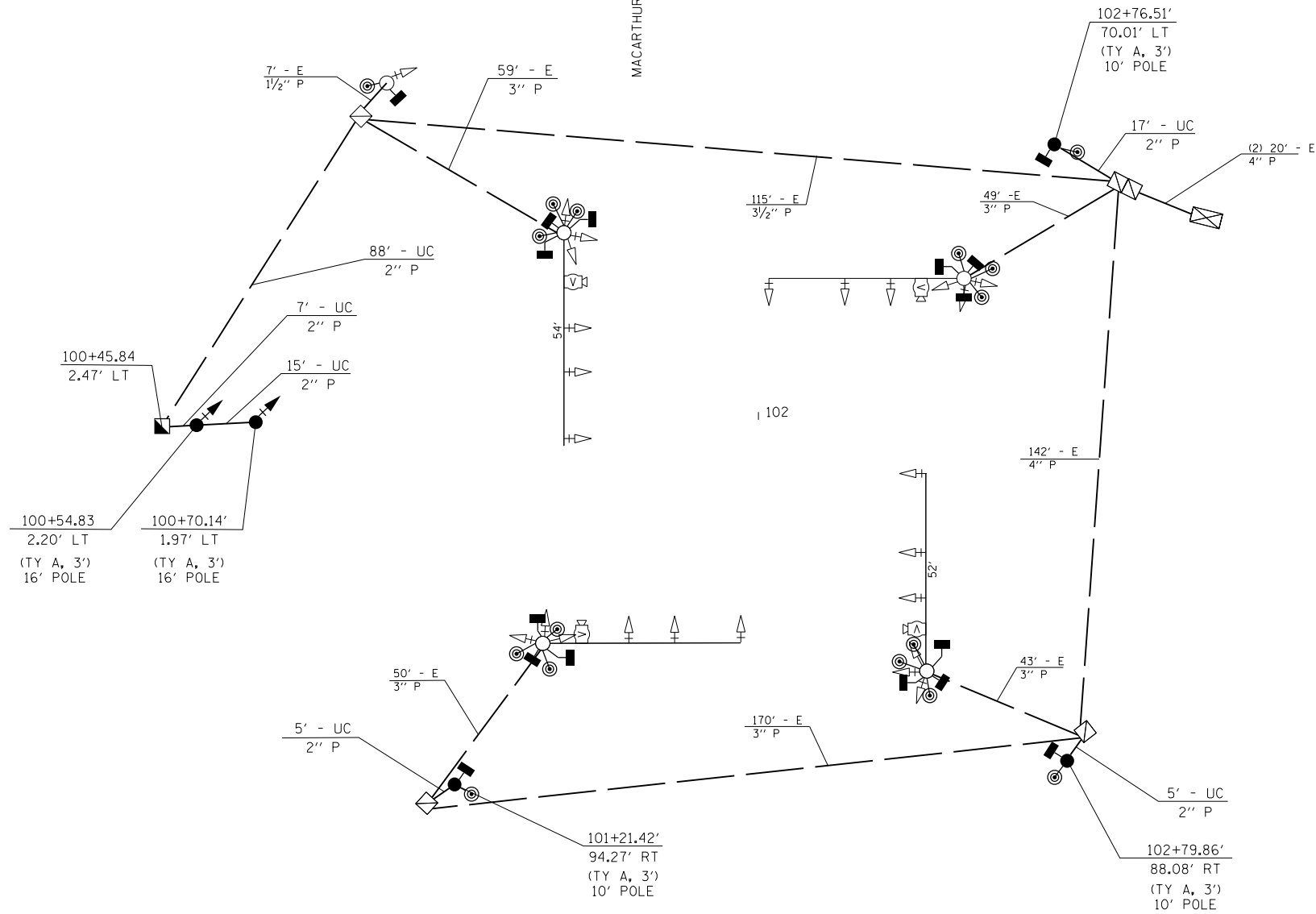


WABASH AVE.

WABASH AVE.

MACARTHUR BLVD

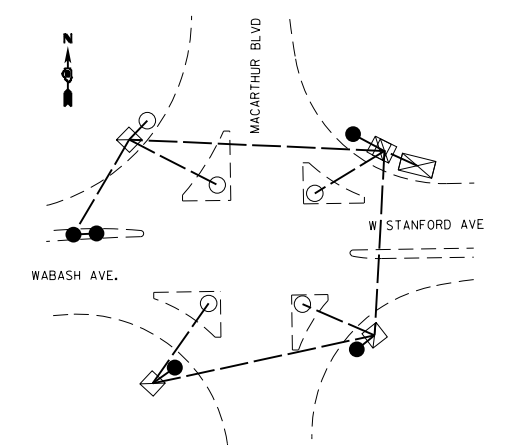


W STANFORD AVE

W STANFORD AVE

**BILL OF MATERIALS: WABASH & MACARTHUR**

CODE NO.	ITEM	UNIT	TOTAL QUANTITY
81028350	UNDERGROUND CONDUIT, PVC, 2" DIA.	FOOT	137
81400100	HANDHOLE	EACH	1
85000200	MAINTENANCE OF EXISTING TRAFFIC SIGNAL INSTALLATION	EACH	1
87300010	GROUNDING EXISTING HANDHOLE FRAME AND COVER	EACH	4
87301245	ELECTRIC CABLE IN CONDUIT, SIGNAL NO. 14 5C	FOOT	1715
87301900	ELECTRIC CABLE IN CONDUIT, EQUIPMENT GROUNDING CONDUCTOR, NO. 6 1C	FOOT	855
87502640	TRAFFIC SIGNAL POST, ALUMINUM 10 FT.	EACH	3
87502700	TRAFFIC SIGNAL POST, ALUMINUM 16 FT.	EACH	2
87800100	CONCRETE FOUNDATION, TYPE A	FOOT	21
87900200	DRILL EXISTING HANDHOLE	EACH	4
88040150	SIGNAL HEAD, POLYCARBONATE, LED, 1-FACE, 5-SECTION, BRACKET MOUNTED	EACH	2
88102825	PEDESTRIAN SIGNAL HEAD, POLYCARBONATE, LED, 1-FACE, BRACKET MOUNTED WITH COUNT DOWN TIMER	EACH	8
88102845	PEDESTRIAN SIGNAL HEAD, POLYCARBONATE, LED, 2-FACE, BRACKET MOUNTED WITH COUNT DOWN TIMER	EACH	4
88800100	PEDESTRIAN PUSH-BUTTON	EACH	16
89501250	RELOCATE EXISTING TRAFFIC SIGNAL EQUIPMENT	EACH	4
89502200	MODIFY EXISTING CONTROLLER	EACH	1
89502210	MODIFY EXISTING CONTROLLER CABINET	EACH	1
89502350	REMOVE AND REINSTALL ELECTRIC CABLE FROM CONDUIT	FOOT	120
89502375	REMOVE EXISTING TRAFFIC SIGNAL EQUIPMENT	EACH	20



**PROPOSED GROUNDING DIAGRAM**

FILE NAME =	USER NAME = sparksgw	DESIGNED -	REVISED -	<b>STATE OF ILLINOIS DEPARTMENT OF TRANSPORTATION</b>	<b>PROPOSED TRAFFIC SIGNAL PLAN SHEET WABASH AVE. &amp; MACARTHUR BLVD</b>				F.A.P. RTE.	SECTION	COUNTY	TOTAL SHEETS	SHEET NO.
Default	ct:\pw\work\p\dot\sparksgw\10296742\06729-sht-trf-signal.dgn	DRAWN - DS	REVISED -		SCALE:	SHEET	OF	SHEETS	STA.	TO	STA.	664	110
	PLOT SCALE = 40.0000' / in.	CHECKED -	REVISED -								SANGAMON	126	110
	PLOT DATE = Nov-08-2013 12:09:39PM	DATE -	REVISED -								ILLINOIS	CONTRACT NO. 72F29	