

STATE OF ILLINOIS
DEPARTMENT OF TRANSPORTATION
DIVISION OF HIGHWAYS
**PROPOSED
CONTRACT MAINTENANCE**

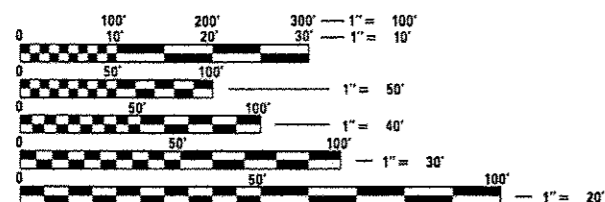
FOR INDEX OF SHEETS, SEE SHEET NO. 2

FAS 636 (MT AUBURN RD)
SECTION (2,3)Q

CHRISTIAN COUNTY

F.A.S. RTE.	SECTION	COUNTY	TOTAL SHEETS	SHEET NO.
636	(2,3) Q	CHRISTIAN	6	1
FED. ROAD DIST. NO.	ILLINOIS	CONTRACT NO. 72633		

ADT = 1,100
SU = 125
MU = 10

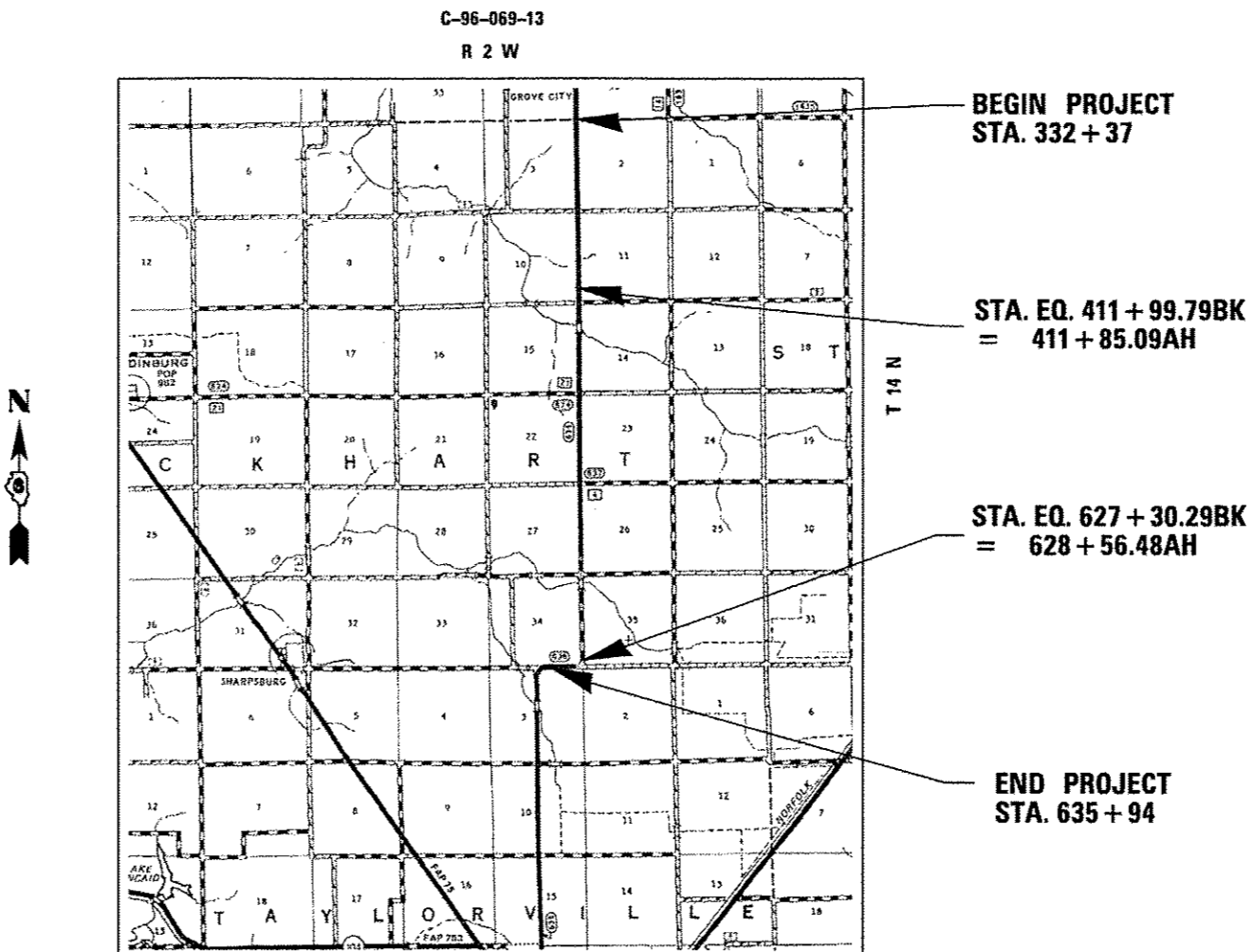


FULL SIZE PLANS HAVE BEEN PREPARED USING STANDARD ENGINEERING SCALES. REDUCED SIZED PLANS WILL NOT CONFORM TO STANDARD SCALES. IN MAKING MEASUREMENTS ON REDUCED PLANS, THE ABOVE SCALES MAY BE USED.

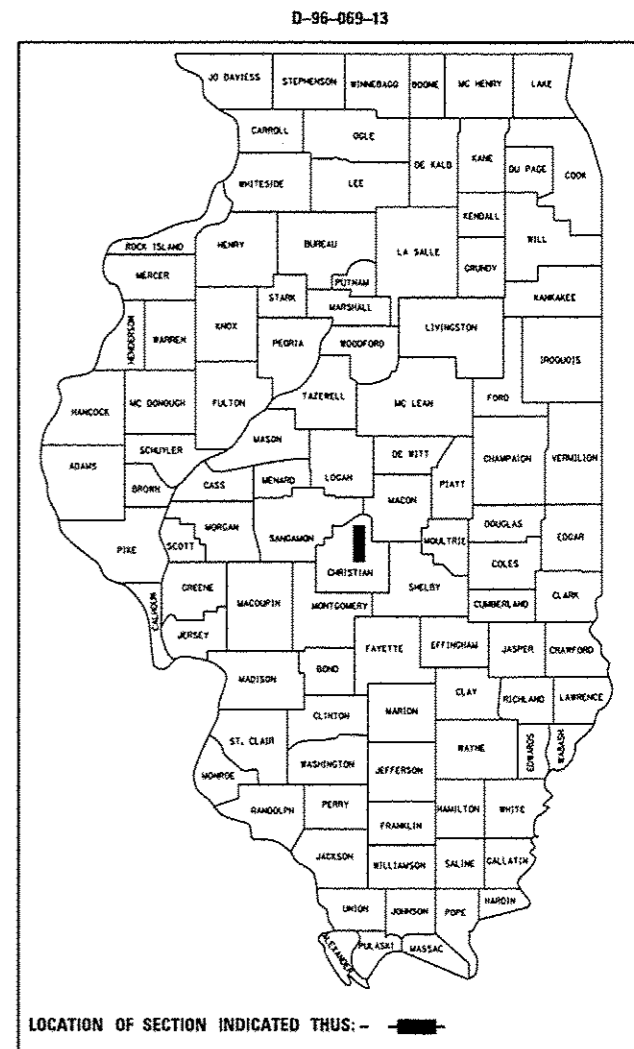
J.U.L.I.E.
JOINT UTILITY LOCATION INFORMATION FOR EXCAVATION
1-800-892-0123
OR 811

PLAN AND CONTRACT TECHNICIAN
TIMOTHY SHARP (217)782-7743

CONTRACT NO. 72633



GROSS LENGTH = 30,245.51 FT. = 5.728 MILE



LOCATION OF SECTION INDICATED THIS: - [black rectangle] -

STATE OF ILLINOIS
DEPARTMENT OF TRANSPORTATION
DIVISION OF HIGHWAYS

SUBMITTED October 10, 2013

Rg Z Ornel
DEPUTY DIRECTOR OF HIGHWAYS, REGION ENGINEER

Dec 6, 2013
John D. Baranzelli P.E.
ENGINEER OF DESIGN AND ENVIRONMENT

Dec 6, 2013
Omer Osman P.E.
DIRECTOR OF HIGHWAYS, CHIEF ENGINEER

**PRINTED BY THE AUTHORITY
OF THE STATE OF ILLINOIS**