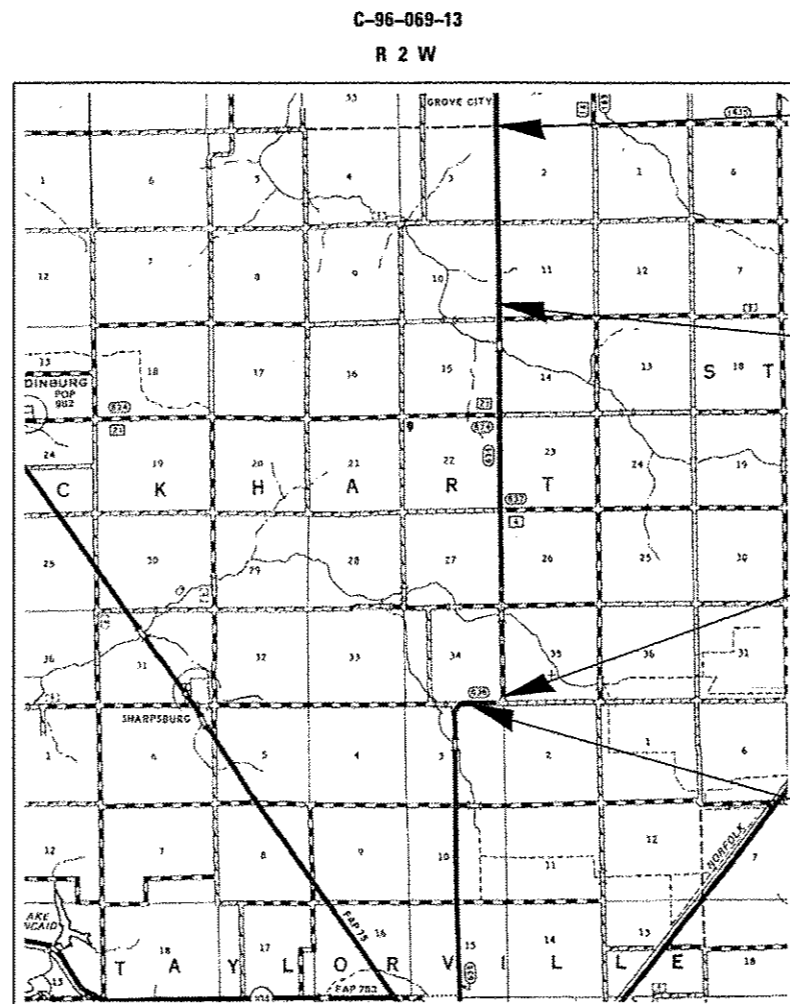


STATE OF ILLINOIS
DEPARTMENT OF TRANSPORTATION
DIVISION OF HIGHWAYS
**PROPOSED
CONTRACT MAINTENANCE**

FOR INDEX OF SHEETS, SEE SHEET NO. 2

FAS 636 (MT AUBURN RD)
SECTION (2,3)Q
CHRISTIAN COUNTY

F.A.S. RTE.	SECTION	COUNTY	TOTAL SHEETS	SHEET NO.
636	(2,3) Q	CHRISTIAN	6	1
FED. ROAD DIST. NO.	ILLINOIS	CONTRACT NO. 72633		



BEGIN PROJECT
STA. 332 + 37

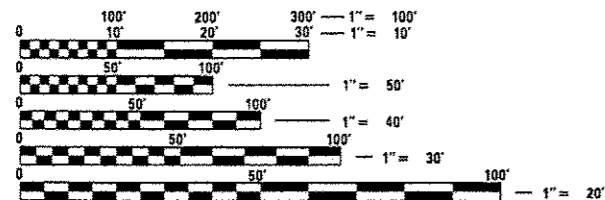
STA. EQ. 411 + 99.79BK
= 411 + 85.09AH

STA. EQ. 627 + 30.29BK
= 628 + 56.48AH

END PROJECT
STA. 635 + 94

GROSS LENGTH = 30,245.51 FT. = 5.728 MILE

ADT = 1,100
SU = 125
MU = 10



FULL SIZE PLANS HAVE BEEN PREPARED USING STANDARD ENGINEERING SCALES. REDUCED SIZED PLANS WILL NOT CONFORM TO STANDARD SCALES. IN MAKING MEASUREMENTS ON REDUCED PLANS, THE ABOVE SCALES MAY BE USED.

J.U.L.I.E.
JOINT UTILITY LOCATION INFORMATION FOR EXCAVATION
1-800-892-0123
OR 811

PLAN AND CONTRACT TECHNICIAN
TIMOTHY SHARP (217)782-7743

CONTRACT NO. 72633

STATE OF ILLINOIS
DEPARTMENT OF TRANSPORTATION
DIVISION OF HIGHWAYS

SUBMITTED October 10, 2013

Reg. Z Ornel
DEPUTY DIRECTOR OF HIGHWAYS, REGION ENGINEER

Dec 6, 2013
John D. Baranzelli P.E.
ENGINEER OF DESIGN AND ENVIRONMENT

Dec 6, 2013
Omer Osman P.E.
DIRECTOR OF HIGHWAYS, CHIEF ENGINEER

**PRINTED BY THE AUTHORITY
OF THE STATE OF ILLINOIS**

BEGIN PROJECT
Sta. 332+37

STA. EQ.
627+30.29BK
=628+56.48AH

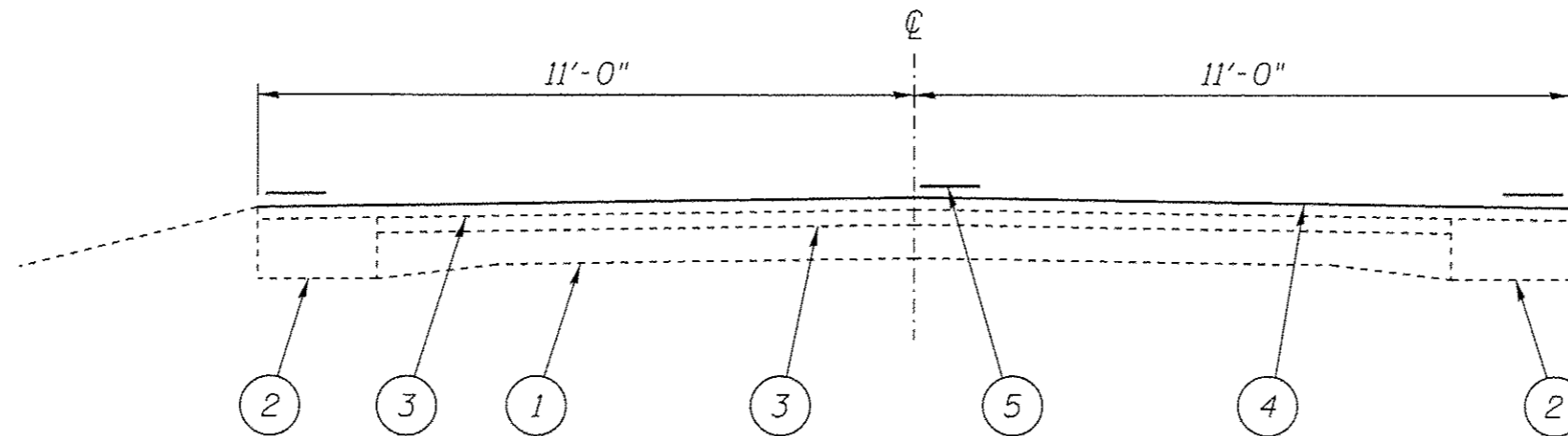
END PROJECT
STA. 635+94



STA. EQ. 411+99.79BK
=411+85.09AH



FILE NAME *	USER NAME * sharpd	DESIGNED -	REVISED -	STATE OF ILLINOIS DEPARTMENT OF TRANSPORTATION	PLAN MT AUBURN ROAD	F.A.S. RTE.	SECTION	COUNTY	TOTAL SHEETS	SHEET NO.	
S:\CONTRMAINT\CA0\72633 - FAS 636 INT.	AUBURN RD - A-1 - CHRISTIAN - Copy\0672633-ah	CHECKED -	REVISED -			636	(2,3) 0	CHRISTIAN	6	4	
Default	PLOT DATE * Aug-21-2013 10:10:32AM	DATE -	REVISED -			SCALE: SHEET 1 OF 1 SHEETS STA. 332+37 TO STA. 635+94		CONTRACT NO. 72633			
ILLINOIS FED. AID PROJECT											



STA. 332+37 TO 635+94
 STA. EQ. 411+99.79bk=411+85.09ah
 STA. EQ. 627+30.29bk=628+56.48ah

LEGEND

- 1- EXIST. P.C.C. PAVEMENT 9-6 $\frac{1}{2}$ "-9
- 2- EXIST. PAVEMENT WIDENING
- 3- EXIST. HOT-MIX ASPHALT SURFACE
- 4- PROP. BIT. SURF. TREATMENT (CL. A-1)
- 5- PAINT PAVEMENT MARKING - LINE 5"

FILE NAME * S:\CONTRM\MAINT_CAD\72633 - FAS 636 INT.	USER NAME * shaptd	DESIGNED -	REVISED -	STATE OF ILLINOIS DEPARTMENT OF TRANSPORTATION	TYPICAL SECTION	F.A.S. RTE.	SECTION	COUNTY	TOTAL SHEETS	SHEET NO.
	UBURN RD) - A-1 - CHRISTIAN - Copy\0672633-ah	OSAWM.dgn -	REVISED -			REVISED -	636	(2,3) 0	CHRISTIAN	6
SHT.PLAN	PLOT SCALE * 3.0000" / 1"	CHECKED -	REVISED -	SCALE: SHEET 1 OF 1 SHEETS STA. TO STA.		ILLINOIS FED. AID PROJECT				
	PLOT DATE * Oct-07-2013 06:13:54AM	DATE -	REVISED -							

PAVEMENT MARKING SCHEDULE			
STATION	TYPE	PAINT PAV'T	
		MRK - LINE 5"	
		YELLOW	WHITE
LT. STA. 332+37 TO 340+89	NO PASS	852 FT	
RT. STA 332+37 TO 34089	SKIP DASH	220 FT	
STA. 340+89 TO 409+45	SKIP DASH	1720 FT	
LT. STA. 409+45 TO 417+86*	SKIP DASH	220 FT	
RT. STA. 409+45 TO 417+86*	NO PASS	856 FT	
LT. STA. 417+86 TO 426+13	NO PASS	892 FT	
RT. STA. 417+86 TO 426+13	SKIP DASH	210 FT	
OMISSION STA. 426+13 TO 427+87			
LT. STA. 427+87 TO 428+72	NO PASS	85 FT	
RT. STA 427+87 TO 428+72	SKIP DASH	30 FT	
STA 428+72 TO 432+03	SKIP DASH	90 FT	
LT. STA. 432+03 TO 438+23	SKIP DASH	160 FT	
RT. STA. 432+03 TO 438+23	NO PASS	620 FT	
STA. 438+23 TO 439+21	SKIP DASH	30 FT	
LT. STA. 439+21 TO 446+15	NO PASS	694 FT	
RT. STA. 439+21 TO 446+15	SKIP DASH	220 FT	
STA 446+15 TO 612+29	SKIP DASH	4160 FT	
LT. STA. 612+29 TO 618+88	SKIP DASH	170 FT	
RT. STA. 612+29 TO 618+88	NO PASS	659 FT	
LT. STA. 618+88 TO 635+94**	NO PASS	1580 FT	
RT. STA. 618+88 TO 635+94**	NO PASS	1580 FT	
LT & RT STA. 332+37 TO 635+94	EDGE		60,492 FT
TOTALS		15,048 FT	60,492 FT

*STA. EQ. 411+99.79bk = 411+85.09ah

**STA. EQ. 627+30.29bk=628+56.48ah