

STATE OF ILLINOIS
DEPARTMENT OF TRANSPORTATION
DIVISION OF HIGHWAYS

**PROPOSED
HIGHWAY PLANS**

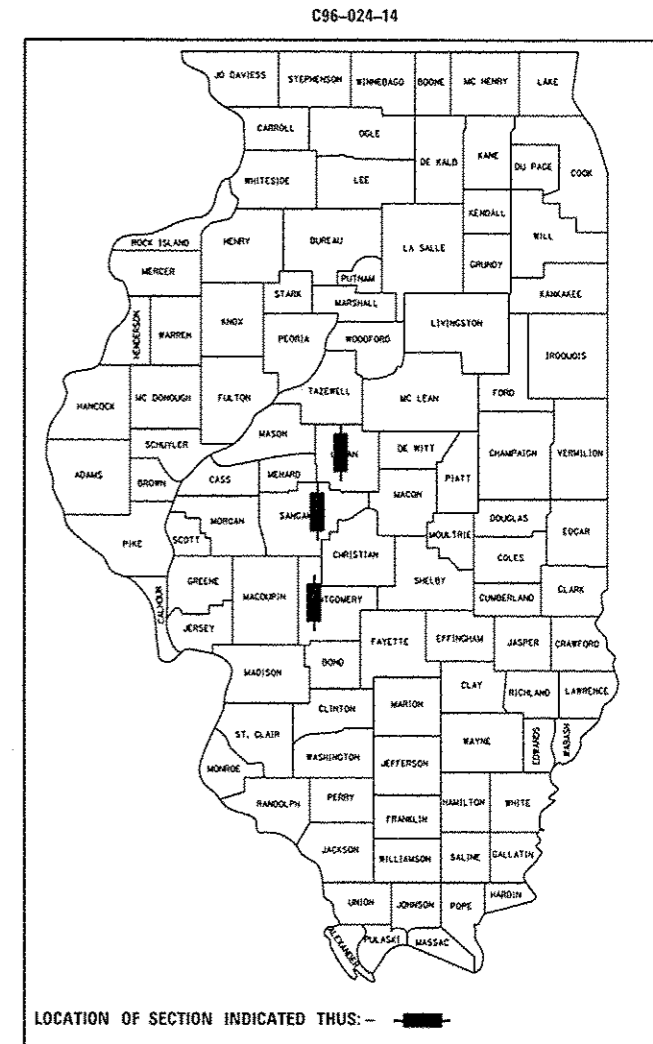
ROUTE FAI 55 (1-55)
SECTION D6 BRIDGE PAINTING 2014

MOTGOMERY, SANGAMON, AND LOGAN COUNTY

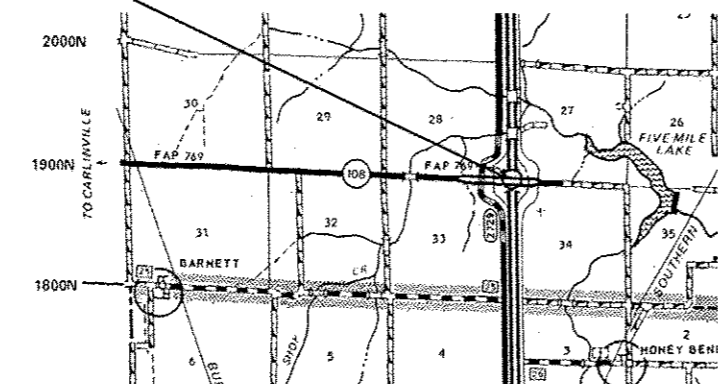
C-96-024-14

F.A. RTE.	SECTION	COUNTY	TOTAL SHEETS	SHEET NO.
VAR.	D6 PAINTING 2014-1	VARIOUS	15	1
ILLINOIS			CONTRACT NO. 72G55	

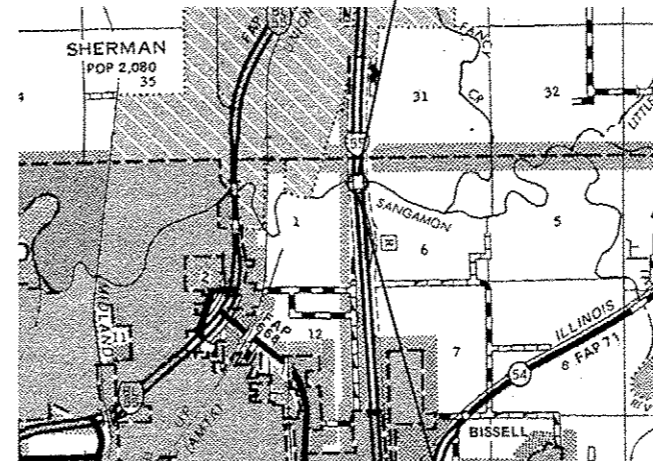
FOR INDEX OF SHEETS, SEE SHEET NO. 2



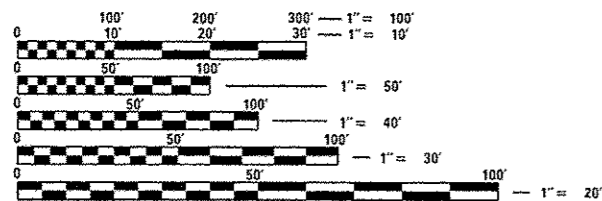
SN 0680043



SN 0840018



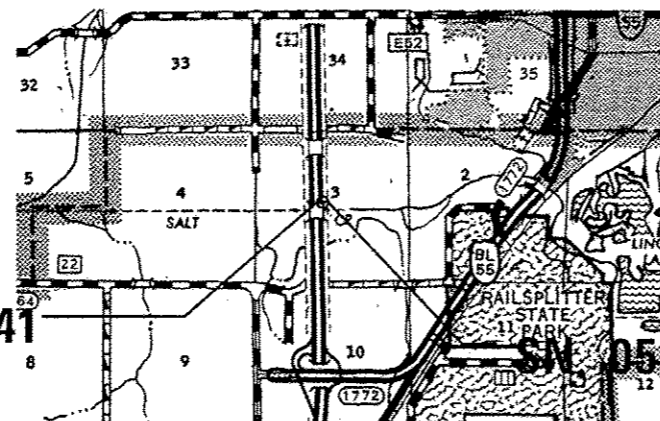
SN 0840019



FULL SIZE PLANS HAVE BEEN PREPARED USING STANDARD ENGINEERING SCALES. REDUCED SIZED PLANS WILL NOT CONFORM TO STANDARD SCALES. IN MAKING MEASUREMENTS ON REDUCED PLANS, THE ABOVE SCALES MAY BE USED.

J.U.L.I.E.
JOINT UTILITY LOCATION INFORMATION FOR EXCAVATION
1-800-892-0123
OR 811

SN 0540041



SN 0540042

GROSS LENGTH = x.xx FT. = x.xxx MILE
NET LENGTH = x.xx FT. = x.xxx MILE

PROJECT ENGINEER BRANDON DUDLEY (217) 785-9290
PROJECT MANAGER DAVE COPENBARGER (217) 785-5306

CONTRACT NO. 72G55

STATE OF ILLINOIS
DEPARTMENT OF TRANSPORTATION
DIVISION OF HIGHWAYS

SUBMITTED October 30 20 13

Ronald Driskell
DEPUTY DIRECTOR OF HIGHWAYS, REGION ENGINEER

Dec 6 20 13
John D. Baranzelli, P.E.
ENGINEER OF DESIGN AND ENVIRONMENT

Dec 6 20 13
Omer Osman, P.E.
DIRECTOR OF HIGHWAYS, CHIEF ENGINEER

PRINTED BY THE AUTHORITY
OF THE STATE OF ILLINOIS