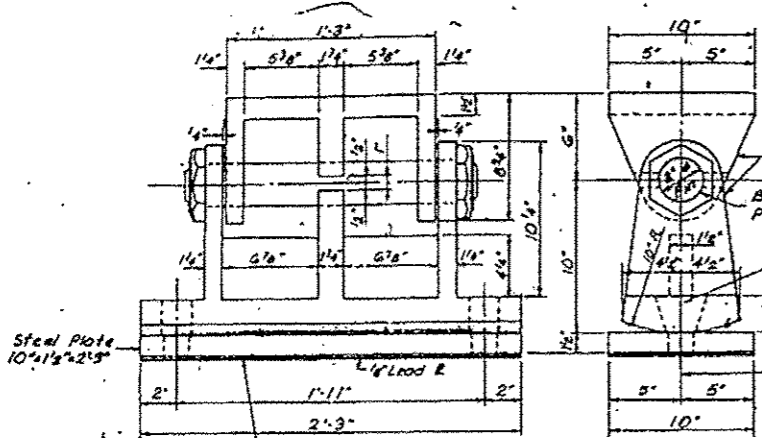


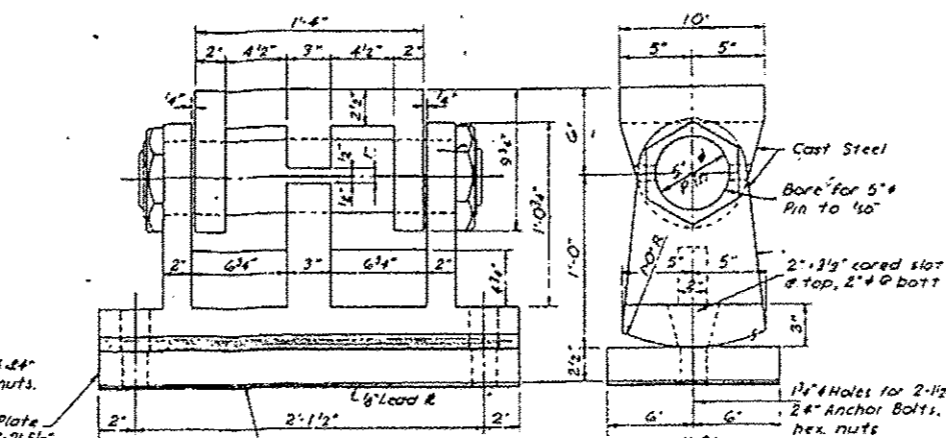
STATE OF ILLINOIS
DEPARTMENT OF PUBLIC WORKS & BUILDINGS
DIVISION OF HIGHWAYS

ROUTE NO.	SECTION	COUNTY	TOTAL SHEETS	SHEET NO.
155	28	SANGAMON	19	15
CONTRACT NO. 72655				



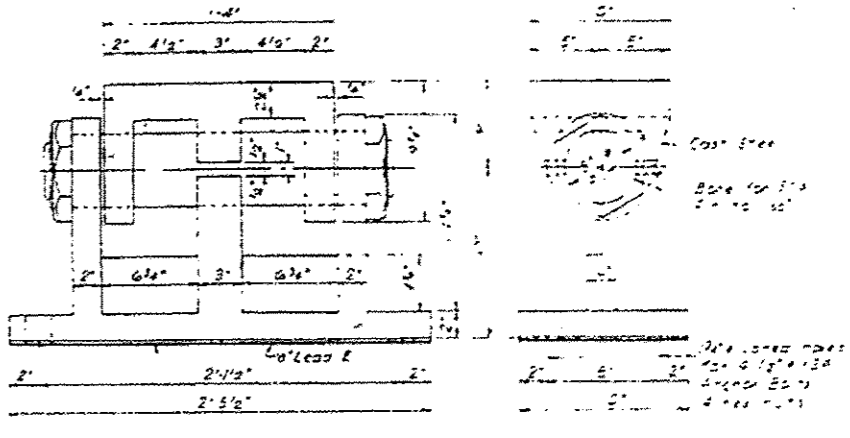
BEARING DETAILS-PIER 4 & 7

Note: Fill R 10'-4 1/2" x 2'-3" required at Girder #3 only



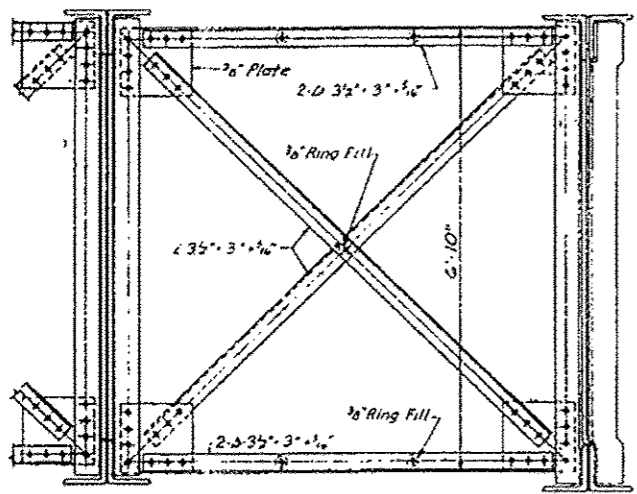
BEARING DETAILS-PIER 6

Note: Fill R 12'-3/8" x 2'-5 1/2" required at Girder #3 only

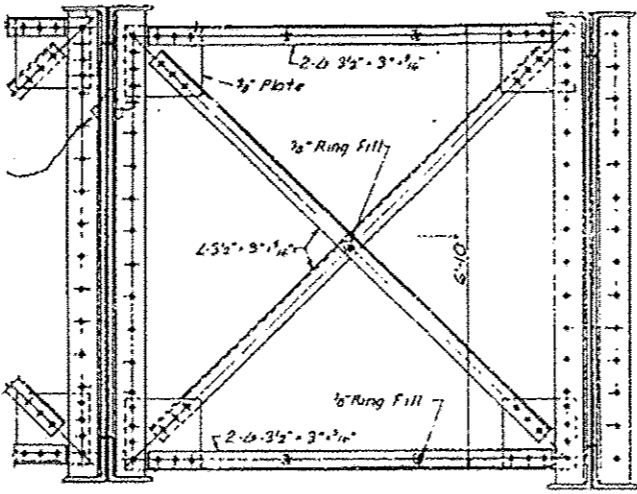


BEARING DETAILS-PIER 5

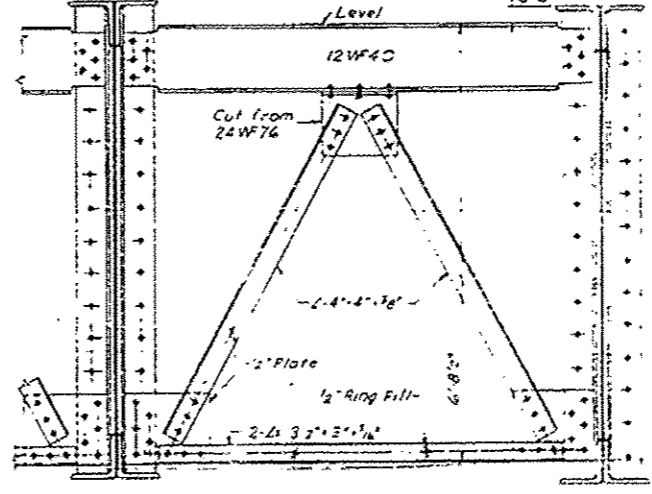
Note: Fill R 12'-3/8" x 2'-5 1/2" required at Girder #3 only



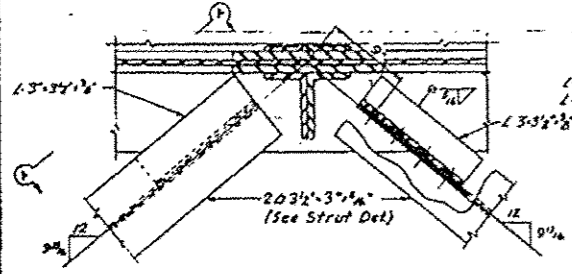
CROSSFRAME F



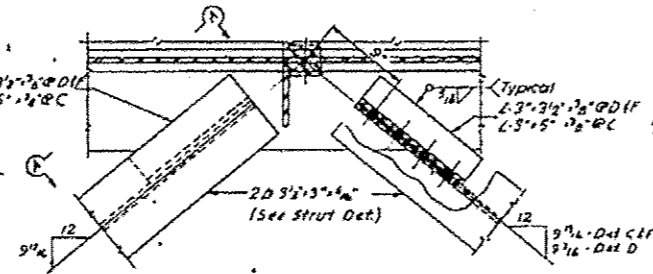
CROSSFRAME F2



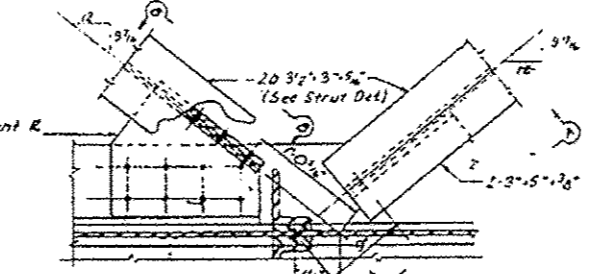
CROSSFRAME F1



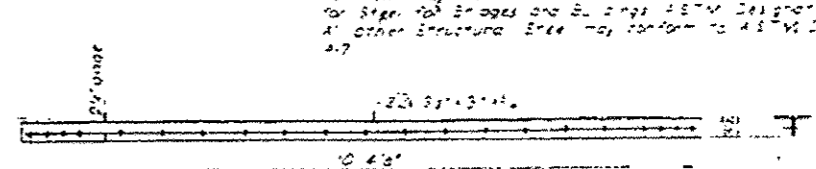
DETAIL G
(Detail B similar)



DETAIL C, D & F

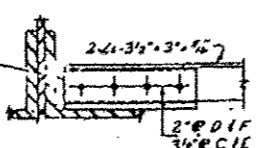


DETAIL E



STRUT DETAIL

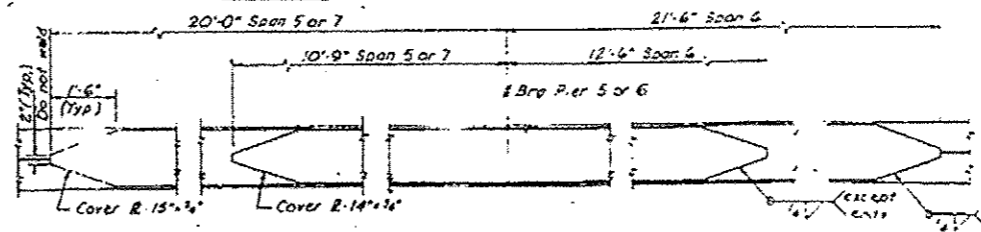
Note: The structural steel for all steel plates and the sections to which they are welded shall conform to the specifications for steel for bridges and all angles shall conform to AISC Specification A. Other structural steel may conform to AISC Specification A.7



SECTION A-A



SECTION B-B



COVER PLATE DETAIL

Cover Plates are not to be welded to flange angles until after all riveting is completed

STRUCTURAL STEEL-GIRDER DETAILS
F.A.I. ROUTE 55 OVER SANGAMON RIVER
SANGAMON COUNTY
STATION 462+2500 (2)

FOR INFORMATIONAL USE ONLY

DESIGNED	V.F. Schutte	SEAL	29
CHECKED	R.D.C.		
DRAWN	T.E.B.		
CHECKED	R.D.C.		

FILE NAME	OPERATIONS\Bridgplans_CAD\72655-06	USER NAME	Alexson	DESIGNED	-	REVISED	-	BRIDGE PLANS	INFORMATIONAL USE ONLY	F.A. RTE.	1-55	SECTION	06 BRIDGE PAINTING 2014	COUNTY	VARIOUS	TOTAL SHEETS	19	SHEET NO.	7
SCALE	1/8" = 1'-0"	CHECKED	-	REVISIONS	-	DATE	-	SCALE		SHEET	OF	SHEETS	STA.	TO	STA.				
										CONTRACT NO. 72655									