

B.M. NO. 10 BOAT SPIKE IN ...
STA. 1651+47 ELEV. 641.71

DIVISION OF HIGHWAYS

GENERAL NOTES

ALL REINFORCEMENT BARS SHALL BE LAPPED 24 DIAMETERS UNLESS OTHERWISE SHOWN.
Fasteners shall be high strength bolts. Bolts 3/8" dia holes 1/2", unless otherwise noted.

FIELD WELDING OF CONSTRUCTION ACCESSORIES WILL NOT BE PERMITTED IN THE BOTTOM FLANGE BEAMS OR GIRDERS NOR ON THE TOP FLANGE FOR A DISTANCE EQUAL TO ONE-FOURTH THE SPAN EACH WAY FROM THE PIER SUPPORTS. FIELD WELDING IN OTHER AREAS WILL BE PERMITTED WHEN APPROVED BY THE ENGINEER.

ANCHOR BOLTS SHALL BE SET BEFORE RIVETING DIAPHRAGMS.

SLOPE SHALL BE REINFORCED WITH WELDED WIRE FABRIC 6" X'.

Calculated weight of Structural Steel = 597,800 lbs.

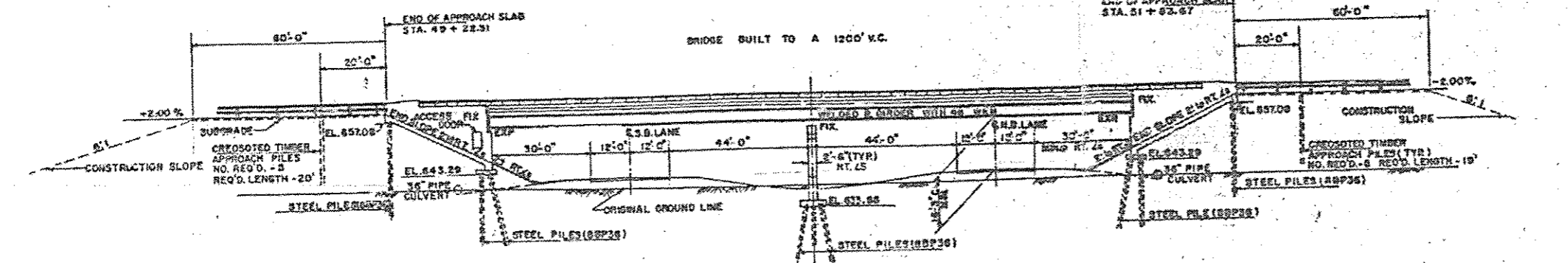
THE EMBANKMENT CONSTRUCTION SHOWN SHALL BE THE MINIMUM EMBANKMENT THAT MUST BE CONSTRUCTED PRIOR TO CONSTRUCTION OF THE ABUTMENTS.

THE CONTRACTOR SHALL DRIVE TWO (2) TEST PILES IN A PERMANENT LOCATION, ONE AT THE APPROACH BENT, AND ONE AT THE END ABUTMENT AS DIRECTED BY THE ENGINEER BEFORE THE REMAINDER OF PILES.

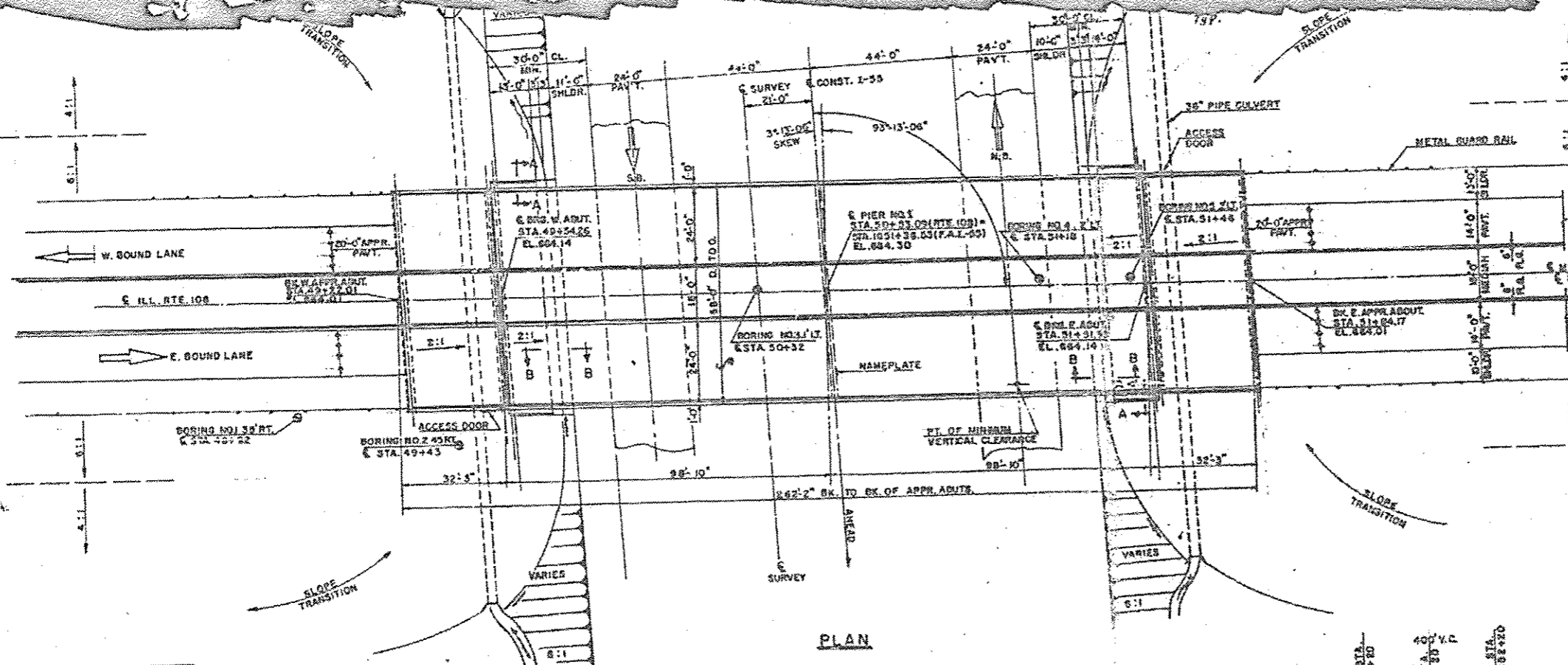
THE CONCRETE RAIL SECTION ABOVE THE MANDATORY CONSTRUCTION JOINT AT THE TOP SHALL BE CONSTRUCTED OF CLASS X CONCRETE, EXCEPT THE AGGREGATES SHALL COMPLY WITH THE REQUIREMENTS OF STANDARD CONCRETE.

The basic lead silico chromate paint system shall be used for shop and field painting of Structural Steel.

STA. 1651+36.53
BUILT 19 BY
STATE OF ILLINOIS
P.A.I. RT. 55-SEC. 68-2H91
F.A. PROJ. 1-55-2(S9)
LOADING HS 20



ELEVATION



PLAN

ITEM	UNIT	SUPER.	SUM.
CLASS A EXCAVATION FOR STRUCTURE	CY. YRS.		17
CLASS X CONCRETE	CY. YRS.	235.0	37
STRUCTURAL STEEL	LBS.		597,800
FURNISHING & ERECTING PRECAST PRESTRESSED CONCRETE I BEAMS (38')	LM. FT.		945
REINFORCEMENT BARS	LBS.	125,000	204
ALUMINUM RAILING	LS. FT.		488
STEEL H PILES (8 BP 36)	LS. FT.		36
TEST PILES STEEL (8 BP 36)	EACH		2
SLOPE WALL (4')	LS. FT.		2
STUD SHEAR CONNECTORS	EACH	3188	
NAME PLATE	EACH		1
PROTECTIVE COAT	SQ. YDS.	2098	
CROCKETED PILES (UP TO 20')	LS. FT.		3
PREFORMED JOINT SEALER	LS. FT.		137

DESIGNED	B.H.B.	EXAMINED	
CHECKED	G.E.P.	PASSED	
DRAWN	J.P.E.	APPROVED	

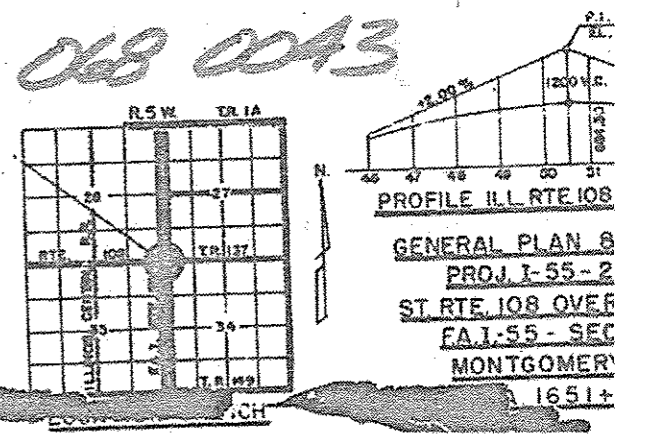
DESIGN STRESSES

FIELD UNITS

$f_c = 1200$	p. s. i. DECK
$f_c = 1400$	p. s. i. SUB. CURB & PARAPET
$f_c = 20000$	p. s. i. STRUCT. & REIN
$f_c = 74$	p. s. i. FOOTINGS

PRECAST PRESTRESSED UNITS

$f_c = 5000$	p. s. i.
$f_{t1} = 4000$	p. s. i.
$f_s = 248000$	p. s. i. STRANDS 7/8"
$f_{s1} = 173500$	p. s. i. STRANDS 7/8"
ALLOW 25% FOR FUTURE W.S.	



FOR INFORMATIONAL USE ONLY

STATE OF ILLINOIS
DEPARTMENT OF TRANSPORTATION

BRIDGE PLANS
INFORMATIONAL USE ONLY

F.A. RTE.	SECTION	COUNTY	TOTAL SHEETS	SHEET NO.
I-55	D6 BRIDGE PAINTING 2014	VARIOUS	15	13
CONTRACT NO. 72G55				
ILLINOIS FED. AID PROJECT				

FILE NAME	USER NAME	DESIGNED	REVISED
GA:\OPERATIONS\Bridges\plans_GAO\72G55-06	Alexis	-	-
Default		DRAWN	REVISED
		CHECKED	REVISED
		DATE	REVISED