

FRAMING PLAN & FILLET LOCATIONS

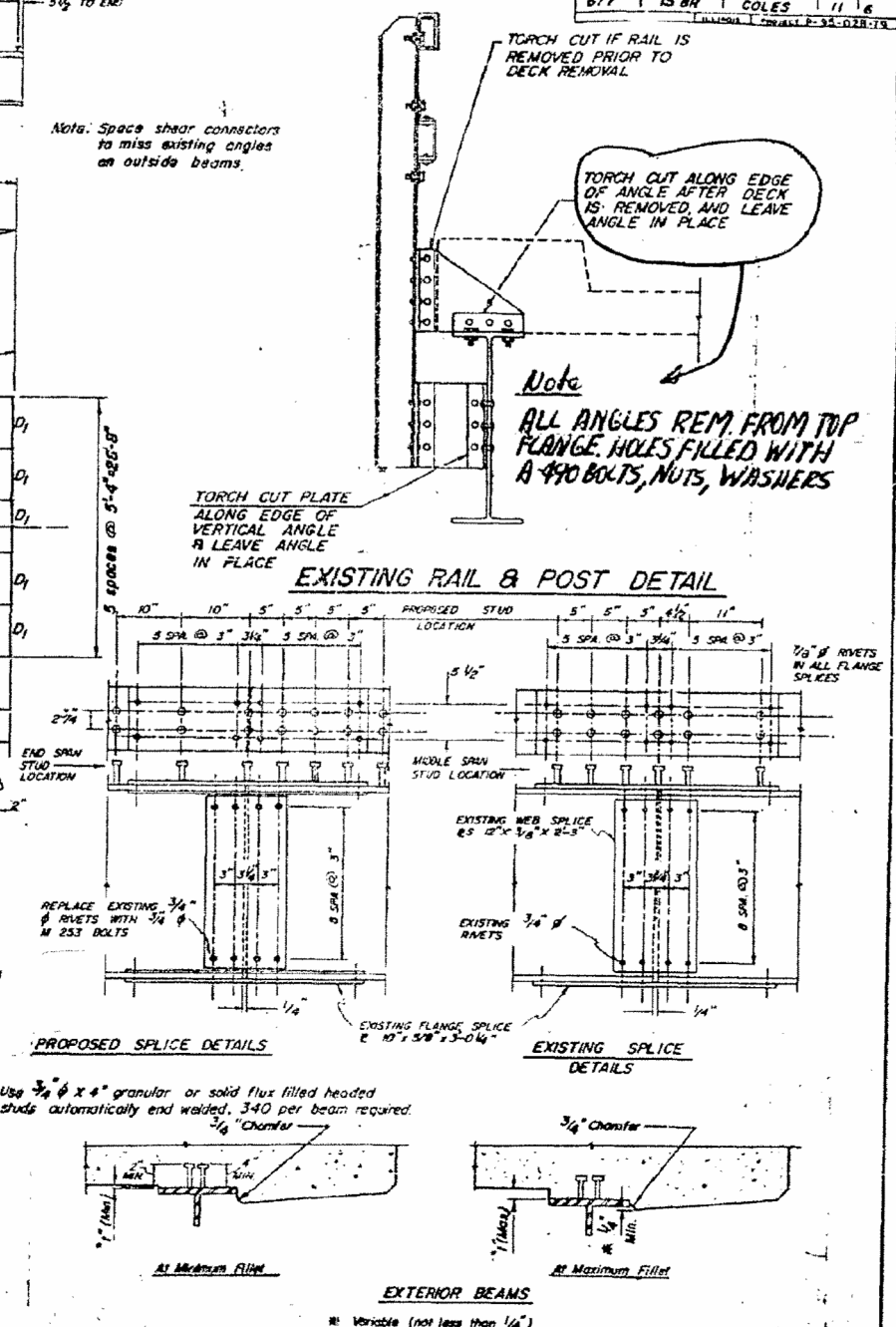
| LOCATION | STATION | BEAM NO. 1 & 6 OFFSET = 13.33' RT. & LT. OF C | | BEAM NO. 2 & 5 OFFSET = 8.00' RT. & LT. OF C | | BEAM NO. 3 & 4 OFFSET = 2.67' RT. & LT. OF C | |
|---------------|-----------|--|---|---|---|---|---|
| | | THEORETICAL GRADE ELEVATIONS | THEORETICAL ELEV. ADJUSTED FOR DEAD LOAD DEFLECTION | THEORETICAL GRADE ELEVATIONS | THEORETICAL ELEV. ADJUSTED FOR DEAD LOAD DEFLECTION | THEORETICAL GRADE ELEVATIONS | THEORETICAL ELEV. ADJUSTED FOR DEAD LOAD DEFLECTION |
| BRG. S. ABUT. | 131+36.79 | 625.292 | 625.292 | 625.375 | 625.375 | 625.458 | 625.458 |
| BRG. S. ABUT. | 131+35.00 | - | 625.292 | - | 625.375 | - | 625.458 |
| a | 131+22.20 | - | 625.321 | - | 625.404 | - | 625.487 |
| b | 131+09.40 | - | 625.334 | - | 625.417 | - | 625.503 |
| c | 130+56.60 | - | 625.326 | - | 625.409 | - | 625.492 |
| d | 130+43.80 | - | 625.305 | - | 625.388 | - | 625.471 |
| BRG. PIER #2 | 130+71.00 | - | 625.292 | - | 625.375 | - | 625.458 |
| e | 130+54.60 | - | 625.317 | - | 625.400 | - | 625.483 |
| f | 130+38.20 | - | 625.345 | - | 625.428 | - | 625.511 |
| g | 130+30.00 | - | 625.349 | - | 625.432 | - | 625.515 |
| h | 130+21.80 | - | 625.343 | - | 625.428 | - | 625.511 |
| i | 130+15.40 | - | 625.317 | - | 625.400 | - | 625.483 |
| BRG. PIER #1 | 129+83.00 | - | 625.292 | - | 625.375 | - | 625.458 |
| j | 129+76.20 | - | 625.305 | - | 625.388 | - | 625.471 |
| k | 129+63.40 | - | 625.326 | - | 625.400 | - | 625.492 |
| l | 129+50.60 | - | 625.334 | - | 625.417 | - | 625.503 |
| m | 129+37.80 | - | 625.321 | - | 625.404 | - | 625.487 |
| BRG. N. ABUT. | 129+25.00 | - | 625.305 | - | 625.375 | - | 625.458 |
| BR. N. ABUT. | 129+23.21 | - | 625.292 | - | 625.375 | - | 625.458 |

NOTE: Elevations are at top of concrete

100' 4" x 3 7/8" x 5' 0 1/4" 25 B 7/8" φ M 253 BOLTS IN PLACE OF EXISTING 1/2" φ RIVETS
 STRUCTURAL STEEL FOR ADDITIONAL FLANGE PLATES SHALL CONFORM TO THE REQUIREMENTS OF AASHTO M-183. ESTIMATED PLATE WEIGHT = 1478 LBS.
 ESTIMATED QUANTITY: RIVET REMOVAL AND REPLACEMENT = 1440 EACH

Note: Space shear connectors to miss existing angles on outside beams.

Note: ALL ANGLES REM. FROM TOP FLANGE. HOLES FILLED WITH A 440 BOLTS, NUTS, WASHERS



NOTE: RIVET REMOVAL AND REPLACEMENT WAS REVISED AS FOLLOWS:
 1) RIVETS AT ALL FLANGE SPLICES WERE REM. & REPL.
 2) REM. & REPL. ONLY TOP AND BOTTOM ROW OF RIVETS ON WEB SPLICE PLATES.

| | | | |
|---------------------------------------|--|--------------------|--|
| SECTION 15 BR, COLES CO., ILL. | | ENGINEER | |
| TAG 677 OVER LITTLE EMBARRASS RIV. | | DATE | |
| STATION 130+30 | | 3-26-82 | |
| STUD SPACING & TOP OF SLAB ELEVATIONS | | SHEET NO. 6 OF 11 | |
| DRAWN BY | | JOB NO. 3137-92-80 | |
| CHECKED BY | | | |
| DATE | | | |
| REVISIONS | | | |