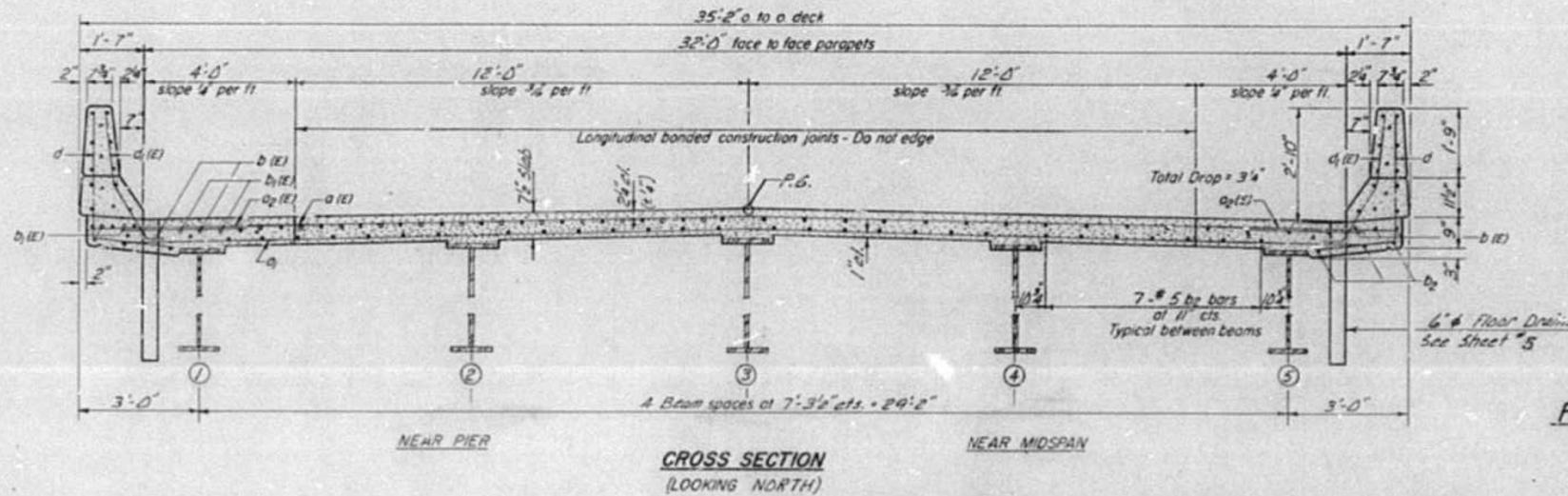
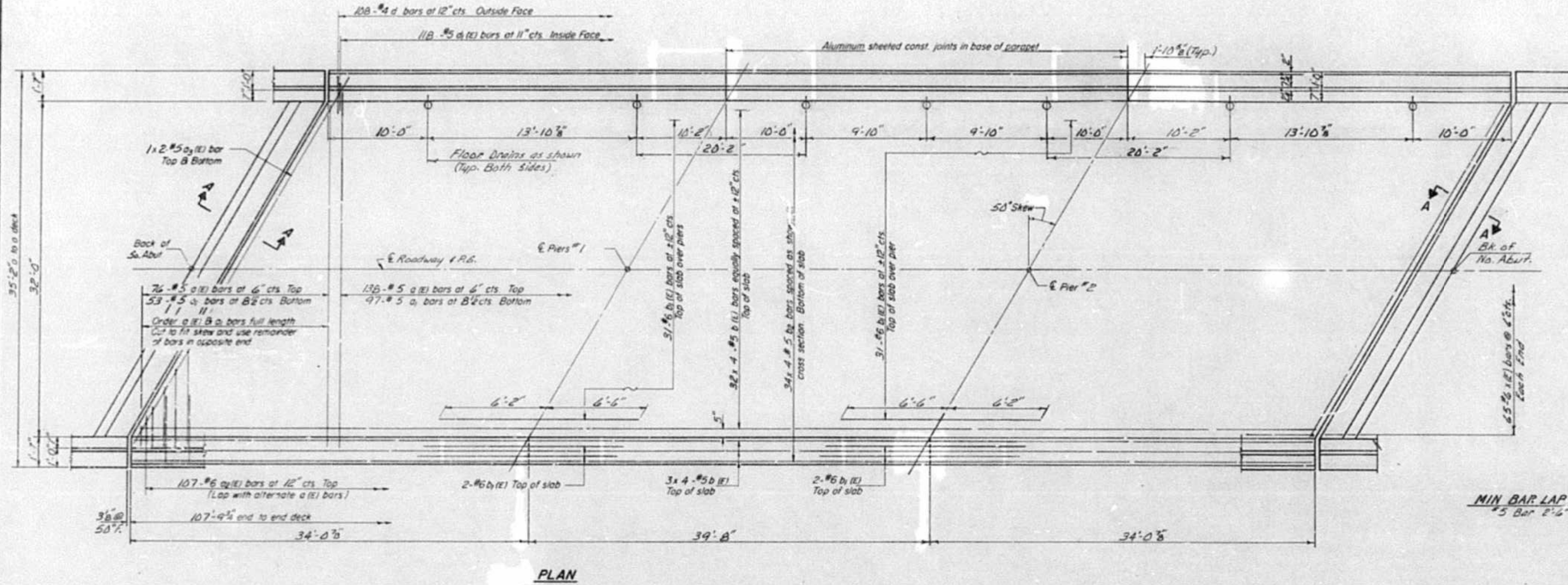


STATE OF ILLINOIS
DEPARTMENT OF TRANSPORTATION

PROJECT NO.	SECTION	SHEET NO.	TOTAL SHEETS	SHEET NO.
74621	1-BR	Moultrie	38	24
SHEET NO. 4				
12 SHEETS				



NOTES:
See sheet #5 for superstructure details and Bill of Material.
Reinforcement bars designated (E) shall be epoxy coated. See Special Provisions.
Bars indicated thus 20 x 3 #5 etc. indicates 20 lines of bars with 3 lengths per line.

DESIGNED Chhagan P.D.M.	October 6, 1981
CHECKED R. F. ROBBY	EXAMINED James J. Hayward
DRAWN R. Summer	PASSED Carl E. Thompson
CHECKED R. F. A. C.P.P.	APPROVED

SUPERSTRUCTURE
F.A.S. RTE 659 SECTION 1-BR
MOULTRIE COUNTY
STA. 173+60.00

FILE NAME =	USER NAME = steffennk	DESIGNED -	REVISED -	STATE OF ILLINOIS DEPARTMENT OF TRANSPORTATION	EXISTING BRIDGE PLANS S.N. 070-0039			F.A.S. RTE.	SECTION	COUNTY	TOTAL SHEETS	SHEET NO.	
Default	et:\pw\work\p\dot\stef\ennk\d0344583\074621-sh1-plan.dgn	DRAWN -	REVISED -		SCALE: N/A	SHEET 5	OF 10 SHEETS	STA.	TO STA.	ILLINOIS	FED. AID PROJECT	13	8
	PLOT SCALE = 100.0000' / in.	CHECKED -	REVISED -									CONTRACT NO.	74621
	PLOT DATE = 8/6/2013	DATE -	REVISED -										

• D7 BRIDGE PAINTING 2014-3
• COLES, MOULTRIE