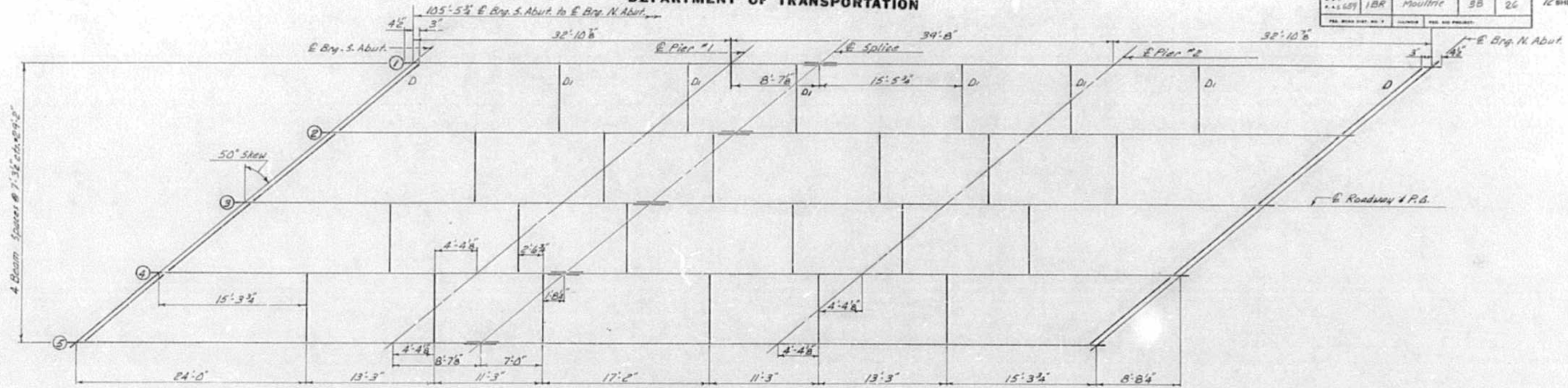
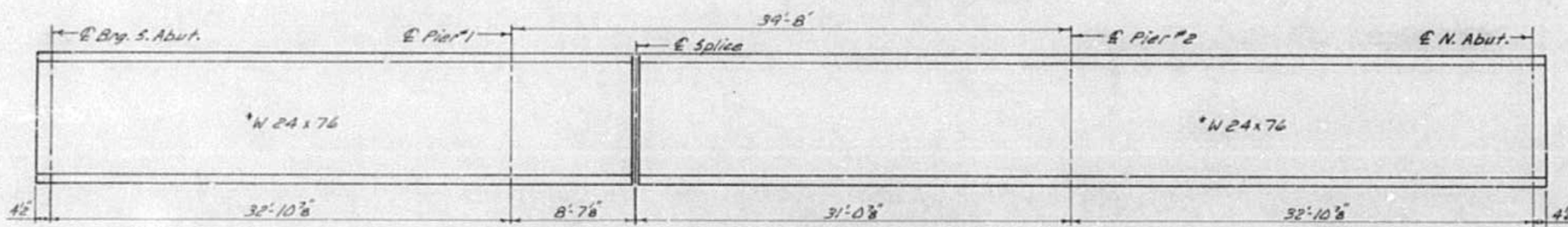


STATE OF ILLINOIS
DEPARTMENT OF TRANSPORTATION

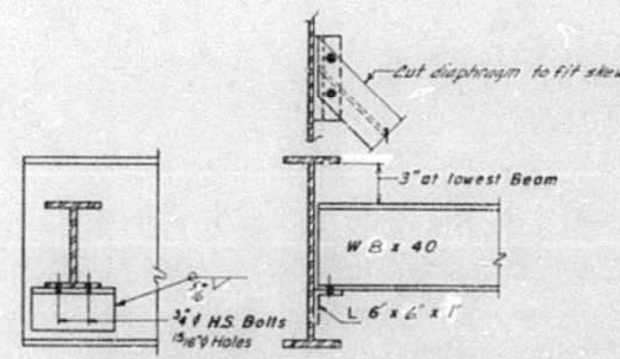
PROJECT NO.	SECTION	DATE	SCALE	SHEET NO.
173460	1BR	Moultrie	SB	26
SHEET NO. 7 12 SHEETS				



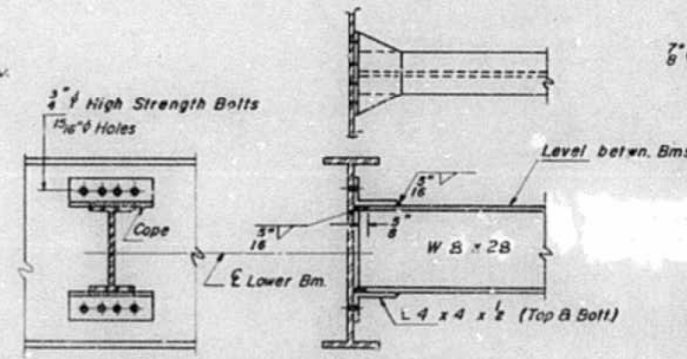
FRAMING PLAN



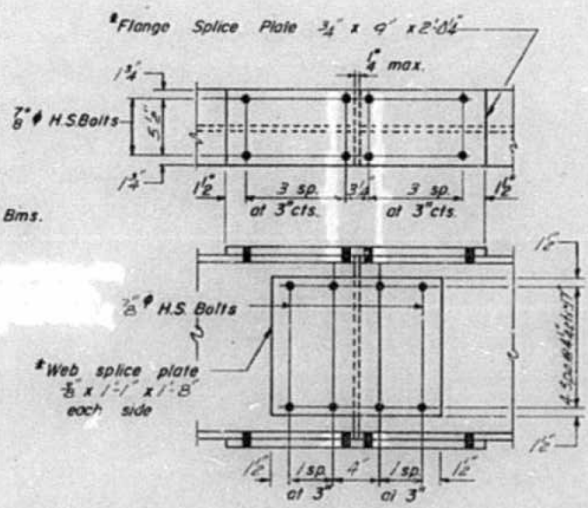
GIRDER ELEVATION



DIAPHRAGM D
B Required



DIAPHRAGM D1
24 Required



SPLICE

Note: Two hardened washers shall be required over all 1 5/16 inch holes. All contact surfaces of joints shall be free of paint or lacquer. All steel shall be AASHTO M222 (Unpainted).

DESIGNED	Chihagan B. Patel
CHECKED	R. F. Roske
DRAWN	P. Sommer
CHECKED	R. F. L. C.P.P.
EXAMINED	October 6, 1981 James J. K... CHIEF OF BRIDGE DESIGN
PASSED	... DIRECTOR OF BRIDGES AND STRUCTURES
APPROVED	... DIRECTOR OF HIGHWAYS

*Notch toughness requirements are applicable to these plates and shapes.

STRUCTURAL STEEL
F.A.S. RTE. 659 SECTION 1-BR
MOULTRIE COUNTY
STA. 173460.00

D7 BRIDGE PAINTING 2014-3
COLES, MOULTRIE

FILE NAME =	USER NAME = steffennk	DESIGNED -	REVISED -	STATE OF ILLINOIS DEPARTMENT OF TRANSPORTATION	EXISTING BRIDGE PLANS S.N. 070-0039	F.A.S. RTE.	SECTION	COUNTY	TOTAL SHEETS	SHEET NO.
Default	et:\pw\work\p\midot\stefennk\d0344583\074621-sh1-plen.dgn	DRAWN -	REVISED -						13	9
	PLOT SCALE = 100.0000' / in.	CHECKED -	REVISED -			SCALE: N/A	SHEET 6 OF 10 SHEETS	STA.	TO STA.	CONTRACT NO. 74621
	PLOT DATE = 8/6/2013	DATE -	REVISED -			ILLINOIS FED. AID PROJECT				