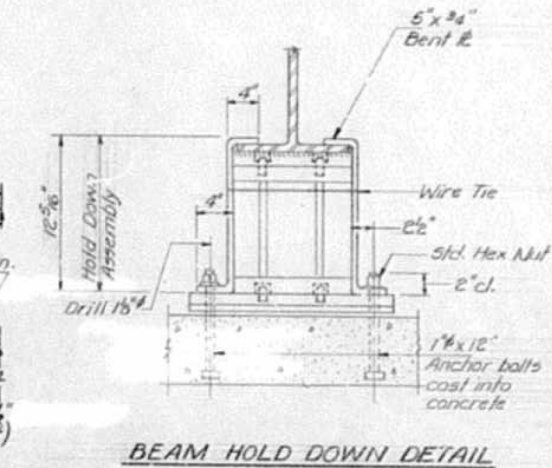
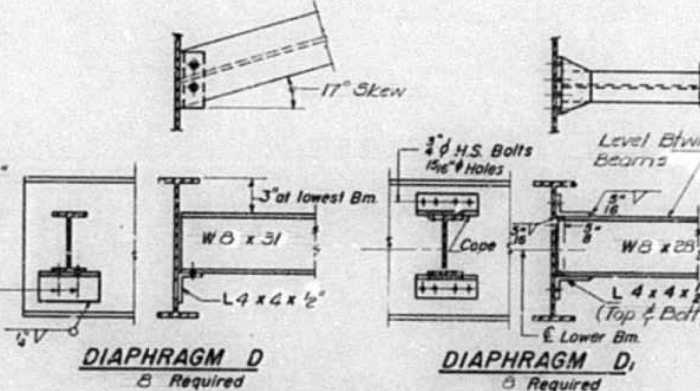
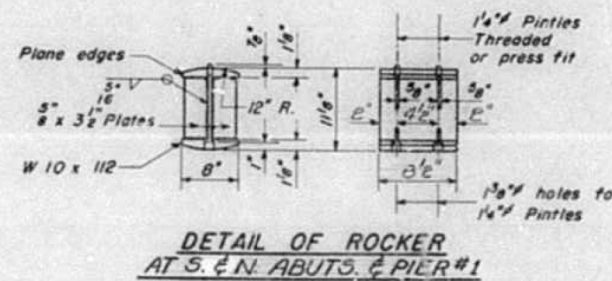
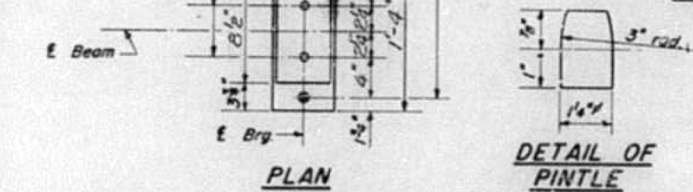
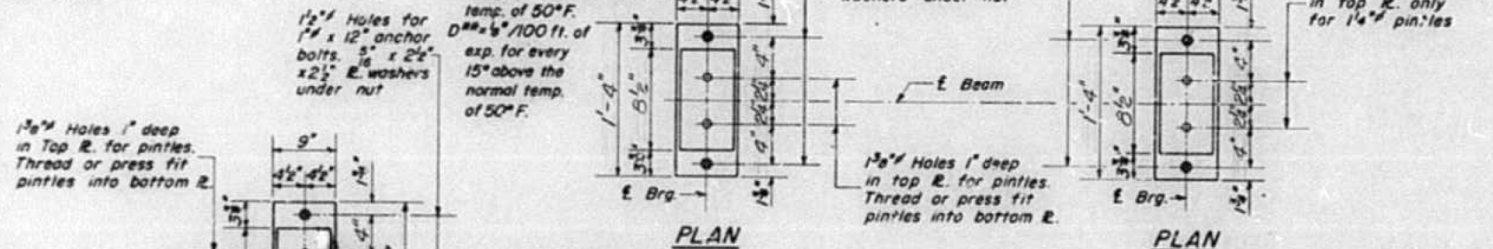
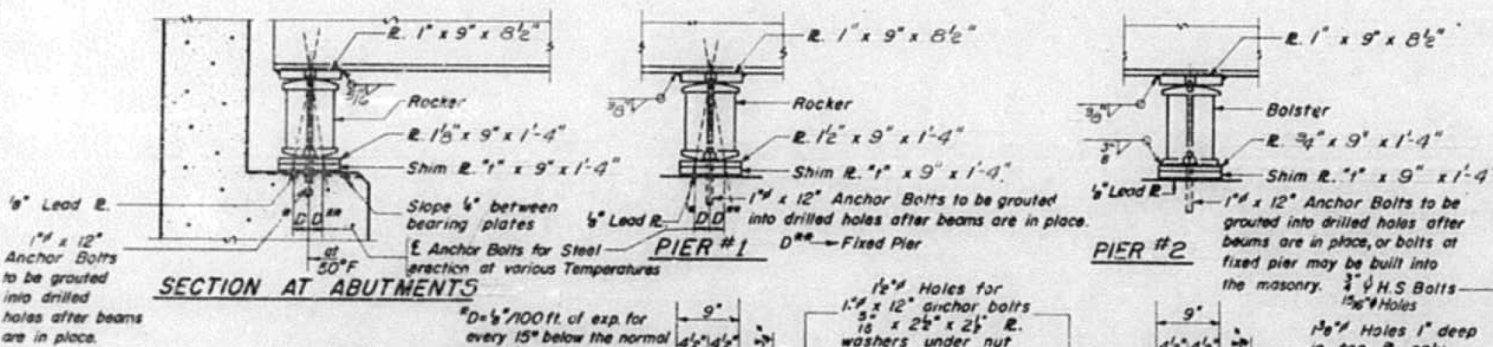
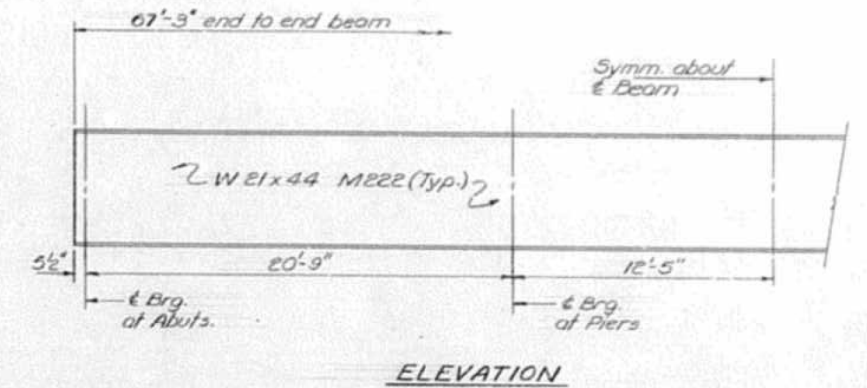
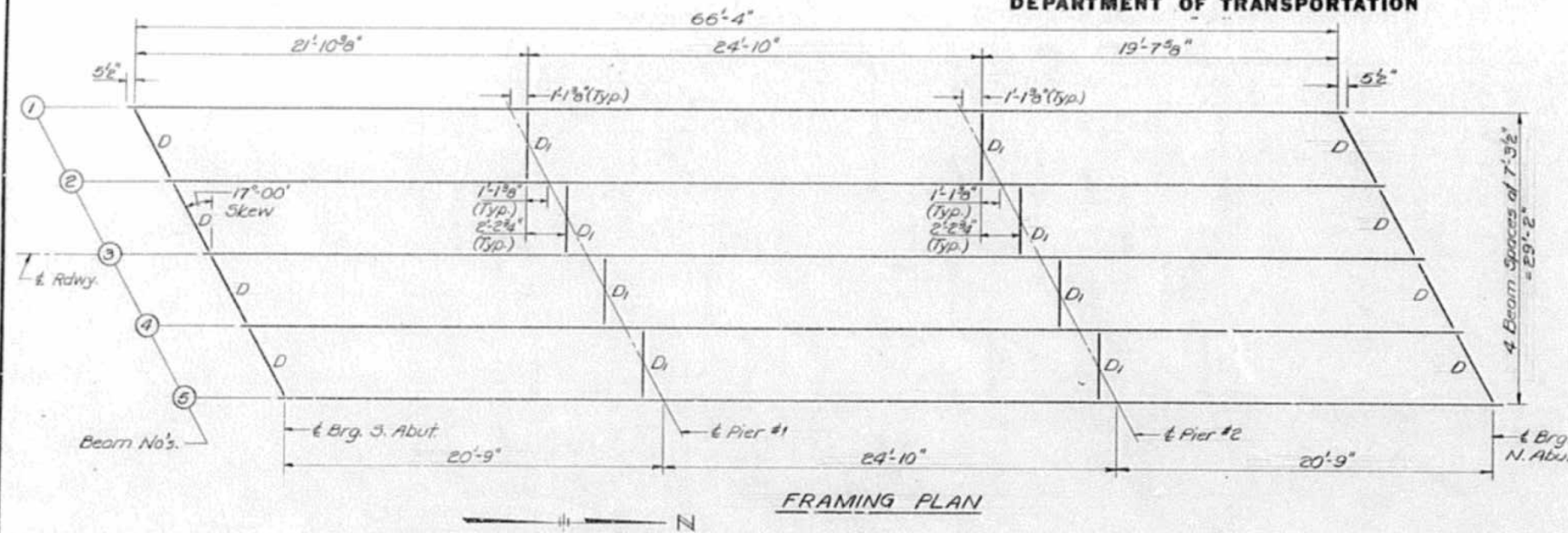


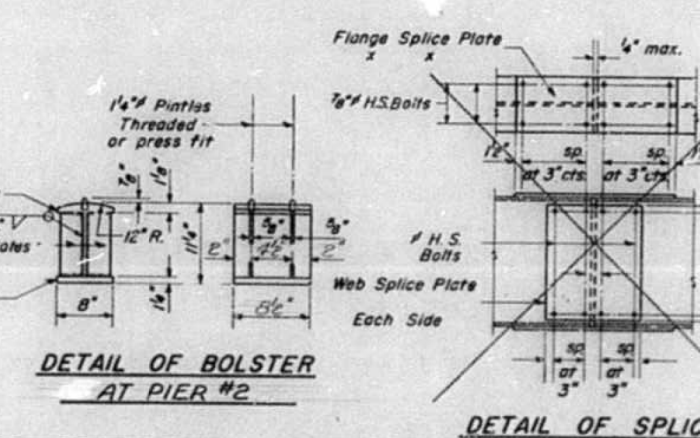
STATE OF ILLINOIS
DEPARTMENT OF TRANSPORTATION

DATE	BY	CHECKED	SCALE	SHEET NO.
F.A.S. RT. 659	IBR-1	Moultrie	38	14
11 SHEETS				



Note: Beams shall be held down at the Abutment on the opposite end of Bridge from which the deck pour is commenced. After pouring is completed the Hold Down Assembly shall be removed and Nuts placed on Anchor Bolts. Cost of Hold Down Assembly, incidental to Class X Concrete.

Note: Two hardened washers shall be required over all 1 1/2" holes. All contact surfaces of joints shall be free of paint or locquer.



Note: The design Moment and Reaction Tables are on sheet #2

DESIGNED: Patrick M. Potvin
CHECKED: Dale F. Schaub
DRAWN: Stu Ferchow
CHECKED: Dale F. Schaub

October 6, 2011
EXAMINED: James J. Karban
FABRICATED: Carl E. Therman
APPROVED: [Signature]

I-2 8-30-80

STRUCTURAL STEEL
F.A.S. RT. 659 SEC. 1BR-1
MOULTRIE COUNTY
STATION 154+73.46