

STATE OF ILLINOIS  
DEPARTMENT OF TRANSPORTATION  
DIVISION OF HIGHWAYS

**PROPOSED  
HIGHWAY PLANS**

F.A.S. ROUTES 677 & 659 (CH3 & CH8)  
SECTION D7 BRIDGE PAINTING 2014-3

BRIDGE PAINTING  
COLES & MOULTRIE COUNTIES  
C-97-067-13

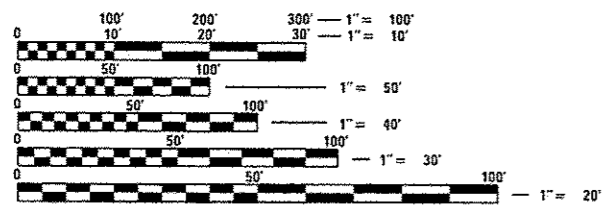
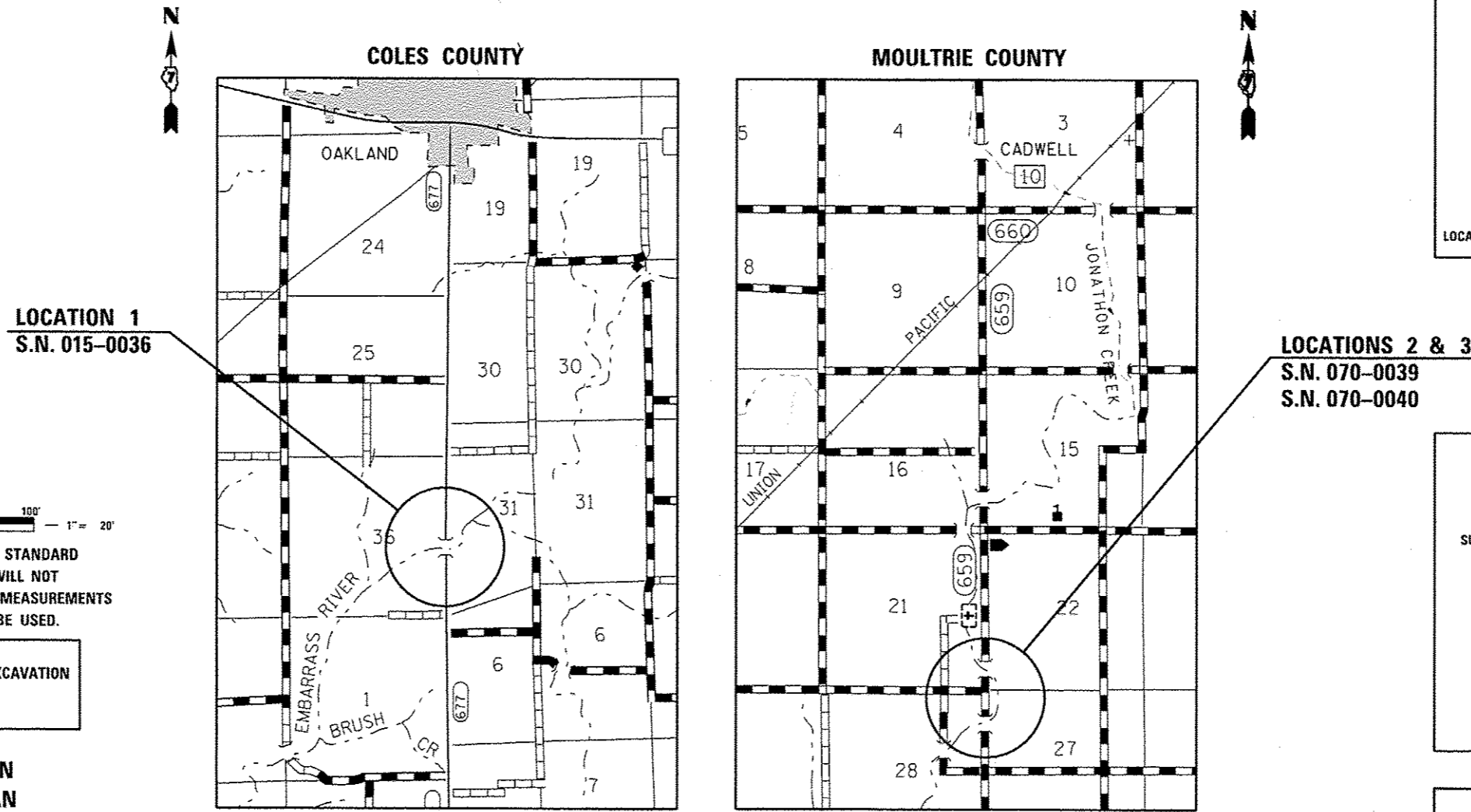
FOR INDEX OF SHEETS, SEE SHEET NO. 2

ADT = 1400 (2009) FAS 677  
2200 (2010) FAS 659

F.A.S. RTE.	SECTION	COUNTY	TOTAL SHEETS	SHEET NO.
677 659		**	13	1
ILLINOIS CONTRACT NO. 74621				

\* D7 BRIDGE PAINTING 2014-3  
\*\* COLES, MOULTRIE

D-97-021-13



FULL SIZE PLANS HAVE BEEN PREPARED USING STANDARD ENGINEERING SCALES. REDUCED SIZED PLANS WILL NOT CONFORM TO STANDARD SCALES. IN MAKING MEASUREMENTS ON REDUCED PLANS, THE ABOVE SCALES MAY BE USED.

J.U.L.I.E.  
JOINT UTILITY LOCATION INFORMATION FOR EXCAVATION  
1-800-892-0123  
OR 811

PROJECT ENGINEER: TOM RONAN  
PROJECT MANAGER: TOM RONAN  
PHONE: (217)-342-8320  
CONTRACT NO. 74621

STATE OF ILLINOIS  
DEPARTMENT OF TRANSPORTATION  
DIVISION OF HIGHWAYS

SUBMITTED Aug 07 20 13  
Roger L. Dishell  
DEPUTY DIRECTOR OF HIGHWAYS, REGION ENGINEER

October 4 20 13  
John D. Baramelli, PE, Inc.  
ACTING ENGINEER OF DESIGN AND ENVIRONMENT

October 4 20 13  
Omer Osman, PE, Inc.  
DIRECTOR OF HIGHWAYS, CHIEF ENGINEER

PRINTED BY THE AUTHORITY  
OF THE STATE OF ILLINOIS