

STATE OF ILLINOIS
 DEPARTMENT OF TRANSPORTATION
 DIVISION OF HIGHWAYS

**PROPOSED
 HIGHWAY PLANS**

F.A.P. ROUTE 116 (IL. RTE. 130)
 SECTION D7 HMA RESURFACING 2014-1

CONTRACT MAINTENANCE RESURFACING
 CUMBERLAND COUNTY

C-97-074-13

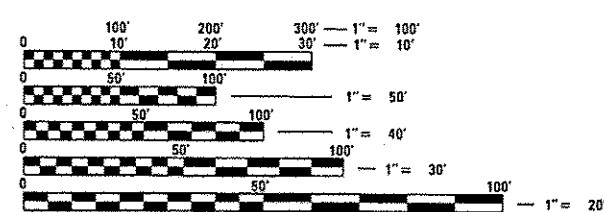
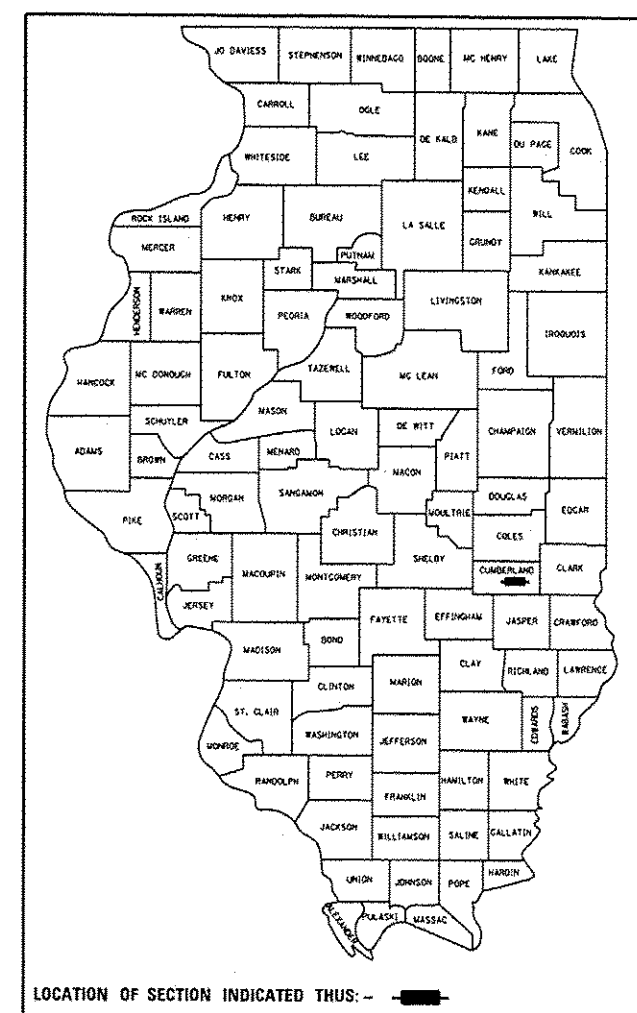
FOR INDEX OF SHEETS, SEE SHEET NO. 2

ADT = 5200

F.A.P. RTE.	SECTION	COUNTY	TOTAL SHEETS	SHEET NO.
116	*	CUMBERLAND	15	1
		ILLINOIS	CONTRACT NO. 74628	

* D7 HMA RESURFACING 2014-1

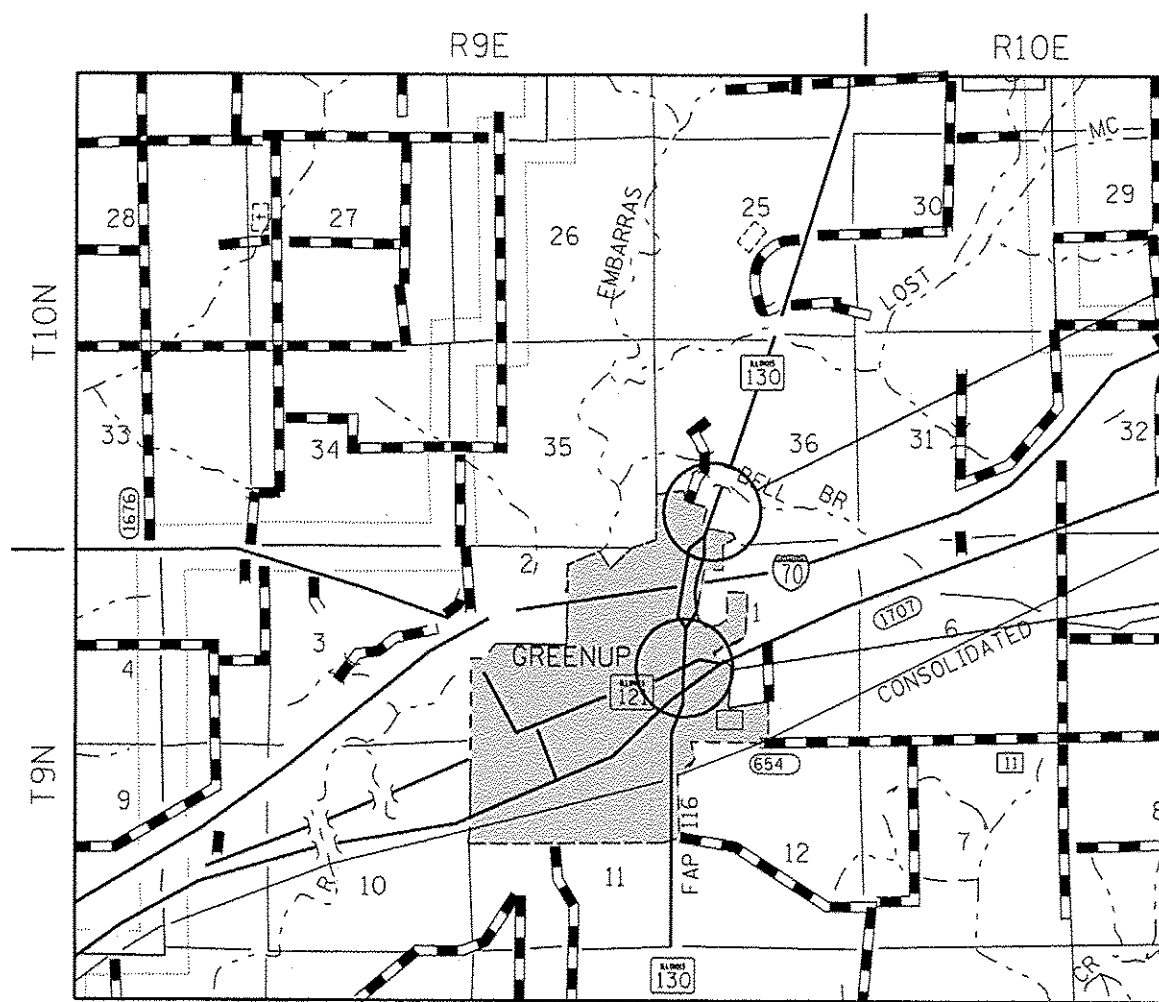
D-97-028-13



FULL SIZE PLANS HAVE BEEN PREPARED USING STANDARD ENGINEERING SCALES. REDUCED SIZED PLANS WILL NOT CONFORM TO STANDARD SCALES. IN MAKING MEASUREMENTS ON REDUCED PLANS, THE ABOVE SCALES MAY BE USED.

J.U.L.I.E.
 JOINT UTILITY LOCATION INFORMATION FOR EXCAVATION
 1-800-892-0123
 OR 811

PROJECT ENGINEER: TOM RONAN
 PROJECT MANAGER: TOM RONAN
 PHONE: (217)-342-8320
 CONTRACT NO. 74628



PROJECT BEGINS:
 STA. 436 + 00

PROJECT ENDS
 STA. 469 + 60

GROSS LENGTH = 3,360 FT. = 0.64 MILE
 NET LENGTH = 3,360 FT. = 0.64 MILE

STATE OF ILLINOIS
 DEPARTMENT OF TRANSPORTATION
 DIVISION OF HIGHWAYS

SUBMITTED Sept. 26 2013
Roger L. Drishell
 DEPUTY DIRECTOR OF HIGHWAYS, REGION ENGINEER

Dec 6 2013
John D. Baranzoni, P.E.
 acting ENGINEER OF DESIGN AND ENVIRONMENT

Dec 6 2013
Omer Osman, P.E.
 DIRECTOR OF HIGHWAYS, CHIEF ENGINEER

PRINTED BY THE AUTHORITY
 OF THE STATE OF ILLINOIS