

01-17-14 LETTING ITEM 060

STATE OF ILLINOIS  
DEPARTMENT OF TRANSPORTATION  
DIVISION OF HIGHWAYS

**PROPOSED  
HIGHWAY PLANS**

F.A.P. ROUTE 777 (IL. RTE. 185 / US 40)  
SECTION D7 HMA RESURF 2014-3

RESURFACING  
FAYETTE COUNTY  
C-97-079-13

FOR INDEX OF SHEETS, SEE SHEET NO. 2

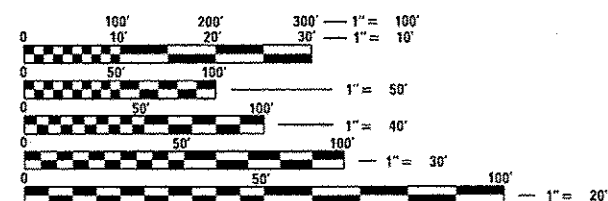
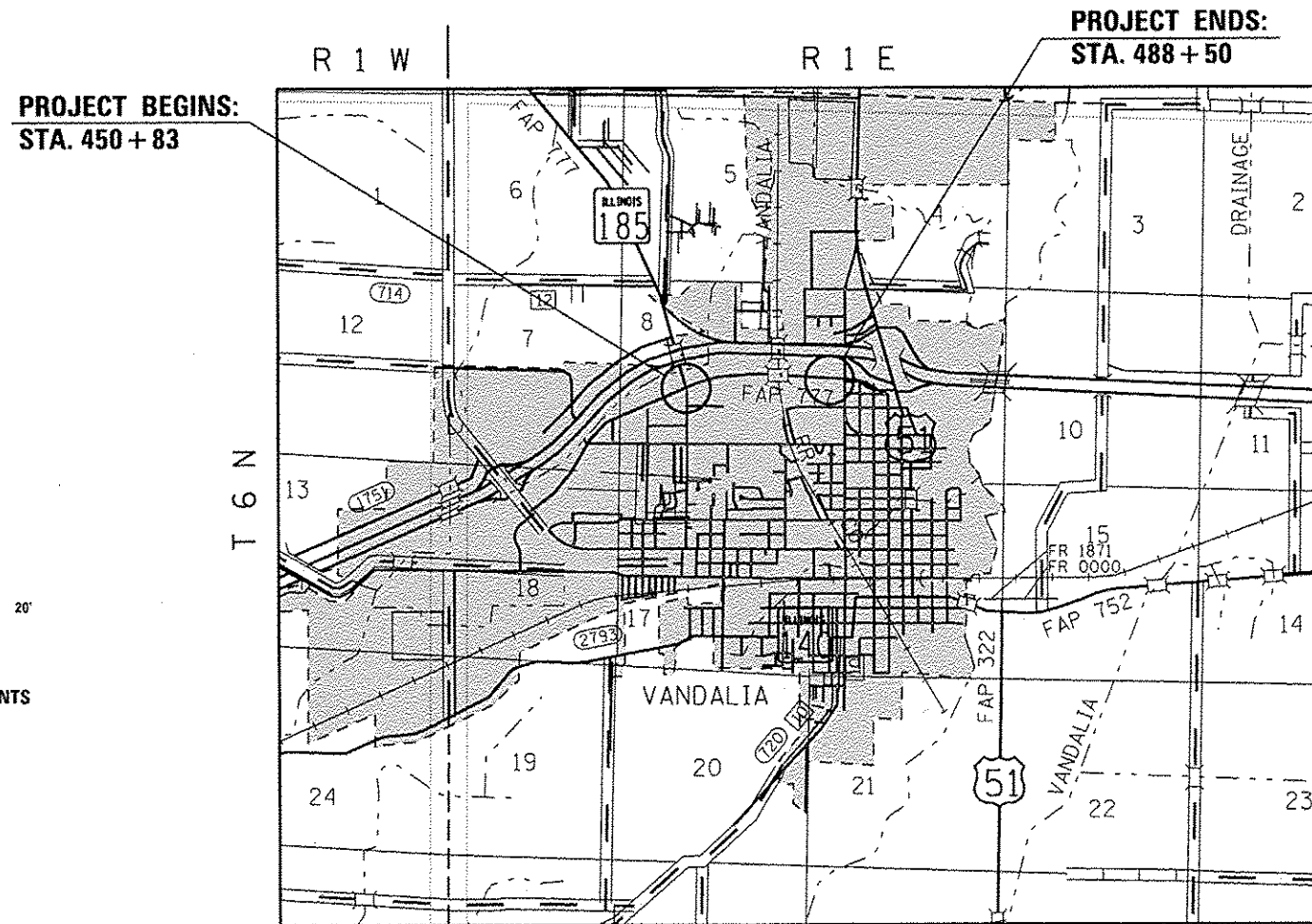
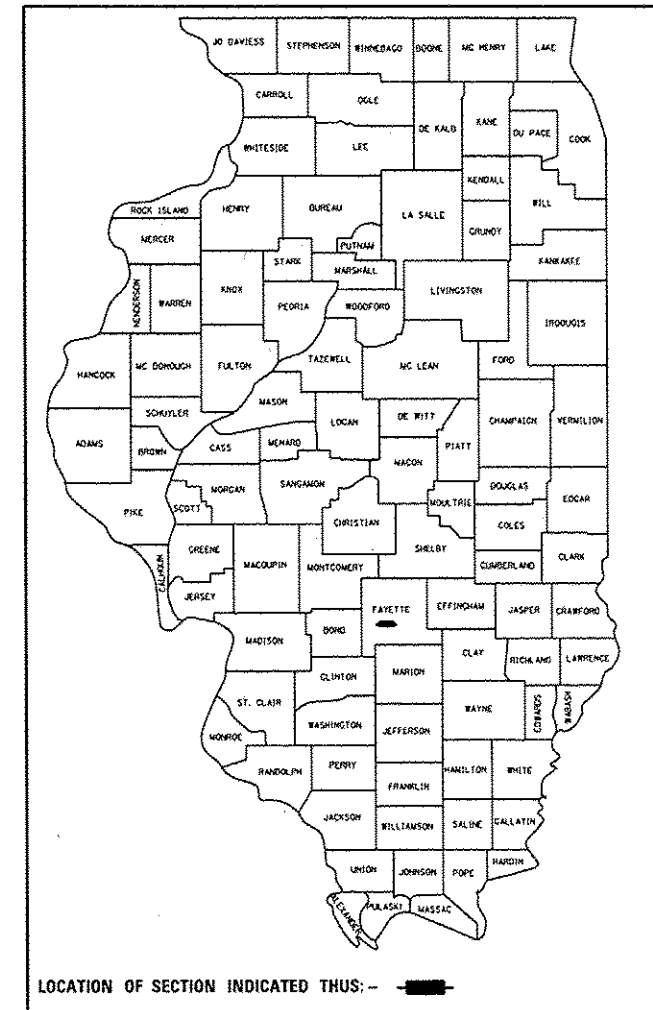
**STATION EQUATION:**

STA. 477+30.89 (BK) = STA. 477+42.92 (AH)

ADT = 7,850

| F.A.P. RTE. | SECTION              | COUNTY   | TOTAL SHEETS       | SHEET NO. |
|-------------|----------------------|----------|--------------------|-----------|
| 777         | D7 HMA RESURF 2014-3 | FAYETTE  | 17                 | 1         |
|             |                      | ILLINOIS | CONTRACT NO. 74633 |           |

D-97-033-13



FULL SIZE PLANS HAVE BEEN PREPARED USING STANDARD ENGINEERING SCALES. REDUCED SIZED PLANS WILL NOT CONFORM TO STANDARD SCALES. IN MAKING MEASUREMENTS ON REDUCED PLANS, THE ABOVE SCALES MAY BE USED.

J.U.L.I.E.  
JOINT UTILITY LOCATION INFORMATION FOR EXCAVATION  
1-800-892-0123  
OR 811

PROJECT ENGINEER: TOM RONAN  
PROJECT MANAGER: TOM RONAN  
PHONE: (217)-342-8320  
CONTRACT NO. 74633

GROSS LENGTH = 3,767 FT. = 0.71 MILE  
NET LENGTH = 3,537 FT. = 0.67 MILE

STATE OF ILLINOIS  
DEPARTMENT OF TRANSPORTATION  
DIVISION OF HIGHWAYS

SUBMITTED Oct 11 2013  
*Roger L. Driskill*  
DEPUTY DIRECTOR OF HIGHWAYS, REGION ENGINEER

Dec 6 2013  
*John D. Baranzelli, P.E.*  
ENGINEER OF DESIGN AND ENVIRONMENT

Dec 6 2013  
*Omer Osman, P.E.*  
DIRECTOR OF HIGHWAYS, CHIEF ENGINEER

PRINTED BY THE AUTHORITY  
OF THE STATE OF ILLINOIS

**INDEX OF SHEETS**

| SHEET NO. | ITEM                              |
|-----------|-----------------------------------|
| 1         | COVER SHEET                       |
| 2         | INDEX OF SHEETS AND GENERAL NOTES |
| 3-4       | SUMMARY OF QUANTITIES             |
| 5         | TYPICAL SECTIONS                  |
| 6         | SCHEDULES OF QUANTITIES           |
| 7-13      | PLAN SHEETS                       |
| 14-17     | PAVEMENT MARKING DETAIL           |

THE FOLLOWING STANDARDS ARE A PART OF THESE PLANS AND ARE INCLUDED AFTER SHEET NO. 17:

| STD. NO.  | DESCRIPTION   |
|-----------|---|
| 000001-06 | STANDARD SYMBOLS, ABBREVIATIONS AND PATTERNS                                |
| 442201-03 | CLASS C AND D PATCHES   |
| 701001-02 | OFF-ROAD OPERATIONS, 2L, 2W, MORE THAN 15' AWAY                             |
| 701006-05 | OFF-RD OPERATIONS, 2L, 2W, 15' TO 24" FROM PAVEMENT EDGE                    |
| 701011-04 | OFF-RD MOVING OPERATIONS, 2L, 2W, DAY ONLY                                  |
| 701201-04 | LANE CLOSURE 2L, 2W, DAY ONLY   |
| 701301-04 | LANE CLOSURE, 2L, 2W, SHORT TIME OPERATIONS                                 |
| 701306-03 | LANE CLOSURE, 2L, 2W, SLOW MOVING OPERATIONS DAY ONLY, FOR SPEEDS >= 45 MPH |
| 701311-03 | LANE CLOSURE 2L, 2W, MOVING OPERATIONS - DAY ONLY                           |
| 701901-03 | TRAFFIC CONTROL DEVICES   |
| 780001-04 | TYPICAL PAVEMENT MARKINGS   |
| 781001-03 | TYPICAL APPLICATIONS RAISED REFLECTIVE PAVEMENT MARKERS                     |

**GENERAL NOTES**

THIS SECTION SHALL BE CONSTRUCTED IN ACCORDANCE WITH THE PLANS; THE "STANDARD SPECIFICATIONS FOR ROAD AND BRIDGE CONSTRUCTION" ADOPTED JANUARY 1, 2012; AND THE SPECIAL PROVISIONS INCLUDED IN THE PROPOSAL.

THIS PROJECT IS LOCATED ON FAP ROUTE 777 (IL 185/US 40) IN VANDALIA IN FAYETTE COUNTY, FROM SUNSET DRIVE (ILLINOIS ROUTE 185) TO 0.2 MILES EAST OF STRUCTURE NUMBER 026-0048. THE WORK INCLUDED IN SECTION D7 HMA RESURF 2014-3 CONSISTS OF PAVEMENT PATCHING, MILLING, HOT-MIX ASPHALT RESURFACING, PAVEMENT MARKING, TRAFFIC CONTROL, AND ANY OTHER WORK NECESSARY TO COMPLETE THE SECTION.

THE CONTRACTOR SHALL USE EITHER RC-70, SS1H, OR SS-1HP, APPLIED AT THE RATE DIRECTED BY THE ENGINEER, FOR THE PAY ITEM BITUMINOUS MATERIALS (PRIME COAT).

THE EXISTING PAVEMENT SHALL BE PATCHED IN ACCORDANCE WITH SECTION 442 OF THE STANDARD SPECIFICATIONS AND THE SPECIAL PROVISIONS. THE QUANTITY OF PATCHING SHOWN ON THE PLANS IS AN ESTIMATE. THE FINAL LOCATIONS AND QUANTITY SHALL BE DETERMINED BY THE ENGINEER IN THE FIELD.

**GENERAL NOTES (Cont' d)**

AN ESTIMATED QUANTITY OF AGGREGATE WEDGE SHOULDER, TYPE B HAS BEEN INCLUDED TO ELIMINATE ANY EXISTING DROP-OFFS AT THE EDGE OF PAVEMENT OR HMA SHOULDER. THE MATERIAL USED FOR AGGREGATE WEDGE SHOULDER, TYPE B SHALL BE CRUSHED CONCRETE OR CRUSHED STONE.

THE PAY ITEM TEMPORARY RAMP HAS BEEN INCLUDED FOR THE CONSTRUCTION OF TEMPORARY RAMPS IN ACCORDANCE WITH ARTICLE 406.08 OF THE STANDARD SPECIFICATIONS. THE COST SHALL INCLUDE BOTH THE INSTALLATION AND THE REMOVAL OF THE TEMPORARY RAMPS.

THE RESIDENT ENGINEER SHALL BE THE SOLE JUDGE CONCERNING THE CURING TIME FOR THE HOT-MIX ASPHALT SURFACE COURSE AND CLASS D PATCHES.

PAVEMENT MARKING SHALL BE APPLIED IN ACCORDANCE WITH SECTION 780 OF THE STANDARD SPECIFICATIONS. SHORT TERM PAVEMENT MARKING SHALL BE APPLIED TO THE MILLED SURFACE, BITUMINOUS MATERIALS (PRIME COAT), AND HOT-MIX ASPHALT SURFACE COURSE AS SPECIFIED IN SECTION 703 OF THE STANDARD SPECIFICATIONS. TEMPORARY TAPE SHALL BE USED ON THE SURFACE COURSE AND PAINT SHALL BE USED ON MILLED SURFACES.

THE TOTAL QUANTITY OF THERMOPLASTIC PAVEMENT MARKING-LINE 4" CONSISTS OF 6,976 FEET OF WHITE AND 3,491 FEET OF YELLOW.

THE TOTAL QUANTITY OF THERMOPLASTIC PAVEMENT MARKING-LINE 6" CONSISTS OF 115 FEET OF WHITE.

THE TOTAL QUANTITY OF THERMOPLASTIC PAVEMENT MARKING-LINE 12" CONSISTS OF 269 FEET OF YELLOW.

THE TOTAL QUANTITY OF THERMOPLASTIC PAVEMENT MARKING-LINE 24" CONSISTS OF 24 FEET OF WHITE.

THE TOTAL QUANTITY OF THERMOPLASTIC PAVEMENT MARKING-LETTERS AND SYMBOLS CONSISTS OF 31 SQUARE FEET OF WHITE.

THE TOTAL QUANTITY OF RAISED REFLECTIVE PAVEMENT MARKERS IS 32 ONE-WAY AMBER, 45 TWO-WAY AMBER, AND 4 ONE-WAY CRYSTAL.

A UNIFORMLY STRAIGHT SAW CUT SHALL BE MADE AT LOCATIONS WHERE PROPOSED NEW CONSTRUCTION WILL ABUT EXISTING HOT-MIX ASPHALT SURFACES. THE SAW CUT SHALL BE MADE FULL DEPTH THROUGH THE EXISTING SURFACE. THIS WORK WILL BE CONSIDERED INCLUDED IN THE COST OF THE CONTRACT ITEMS INVOLVED AND NO EXTRA COMPENSATION WILL BE ALLOWED.

THE FOLLOWING MIXTURE REQUIREMENTS ARE APPLICABLE FOR THIS PROJECT:

|                      |   |
|----------------------|---|
| MIXTURE USE:         | SURFACE COURSE                              |
| APPLICATION:         | HOT-MIX ASPHALT SURFACE COURSE, MIX "C" N70 |
| PG GRADE:            | PG 64-22                                    |
| DESIGN AIR VOIDS:    | 4.0% @ NDESIGN = 70                         |
| MIXTURE COMPOSITION: | IL-9.5                                      |
| FRICTION AGGREGATE:  | MIXTURE C                                   |

|                      |   |
|----------------------|---|
| MIXTURE USE:         | CLASS D PAVEMENT PATCHING                   |
| APPLICATION:         | HOT-MIX ASPHALT BINDER COURSE, IL-19.0, N70 |
| PG GRADE:            | PG 64-22                                    |
| DESIGN AIR VOIDS:    | 4.0% @ NDESIGN = 70                         |
| MIXTURE COMPOSITION: | IL-19.0                                     |
| FRICTION AGGREGATE:  | N/A   |

THE FOLLOWING RATES OF APPLICATION HAVE BEEN USED IN THE CALCULATING PLAN QUANTITIES:

|                                   |                    |
|-----------------------------------|--------------------|
| BITUMINOUS MATERIALS (PRIME COAT) | 0.10 GAL/SQ YD     |
| AGGREGATE (PRIME COAT)            | 4 LBS/SQ YD        |
| HOT-MIX ASPHALT                   | 112 LBS/SQ YO/INCH |

|  |             |             |             |   |  |                    |                      |         |              |              |                           |
|--|-------------|-------------|-------------|---|--|--------------------|----------------------|---------|--------------|--------------|---------------------------|
| FILE NAME :  | USER NAME : | DESIGNED :  | REVISED :   | <b>STATE OF ILLINOIS<br/>DEPARTMENT OF TRANSPORTATION</b> | <b>INDEX OF SHEETS AND<br/>GENERAL NOTES</b> | F.A.P. RTE.        | SECTION              | COUNTY  | TOTAL SHEETS | SHEET NO.    |                           |
| c:\pwork\pwork\stefannk\0348246\074633-shr-index.dgn | stefannk    | DRAWN :     | REVISED :   |   |  | 777                | D7 HMA RESURF 2014-3 | FAYETTE | 17           | 2            |                           |
| PLOT SCALE :   | CHECKED :   | REVISIONS : | REVISIONS : |   |  | CONTRACT NO. 74633 |                      |         |              |              |                           |
| 100.0000 1/16"                                       | DATE :      | DATE :      | DATE :      |   |  | SCALE: N/A         | SHEET 1              | OF 1    | SHEETS       | STA. TO STA. | ILLINOIS FED. AID PROJECT |

| SUMMARY OF QUANTITIES |  |        | URBAN<br>TOTAL<br>QUANTITIES | CONSTRUCTION TYPE CODE |  |
|-----------------------|--|--------|------------------------------|------------------------|--|
| CODE NO               | ITEM   | UNIT   |                              | 100% STATE<br>0005     |  |
| 40600100              | BITUMINOUS MATERIALS (PRIME COAT)                  | GALLON | 953                          | 953                    |  |
| 40600300              | AGGREGATE (PRIME COAT)                             | TON    | 19                           | 19                     |  |
| 40600990              | TEMPORARY RAMP                                     | SQ YD  | 108                          | 108                    |  |
| 40603315              | HOT-MIX ASPHALT SURFACE COURSE, MIX "C", N70       | TON    | 801                          | 801                    |  |
| 44000155              | HOT-MIX ASPHALT SURFACE REMOVAL, 1 1/2"            | SQ YD  | 9532                         | 9532                   |  |
| 44201798              | CLASS D PATCHES, TYPE I, 13 INCH                   | SQ YD  | 8                            | 8                      |  |
| 44201803              | CLASS D PATCHES, TYPE II, 13 INCH                  | SQ YD  | 253                          | 253                    |  |
| 44201807              | CLASS D PATCHES, TYPE III, 13 INCH                 | SQ YD  | 48                           | 48                     |  |
| 48102100              | AGGREGATE WEDGE SHOULDER, TYPE B                   | TON    | 170                          | 170                    |  |
| 67100100              | MOBILIZATION                                       | L SUM  | 1                            | 1                      |  |
| 70100450              | TRAFFIC CONTROL AND PROTECTION, STANDARD<br>701201 | L SUM  | 1                            | 1                      |  |
| 70100460              | TRAFFIC CONTROL AND PROTECTION, STANDARD<br>701306 | L SUM  | 1                            | 1                      |  |
| 70300100              | SHORT TERM PAVEMENT MARKING                        | FOOT   | 800                          | 800                    |  |

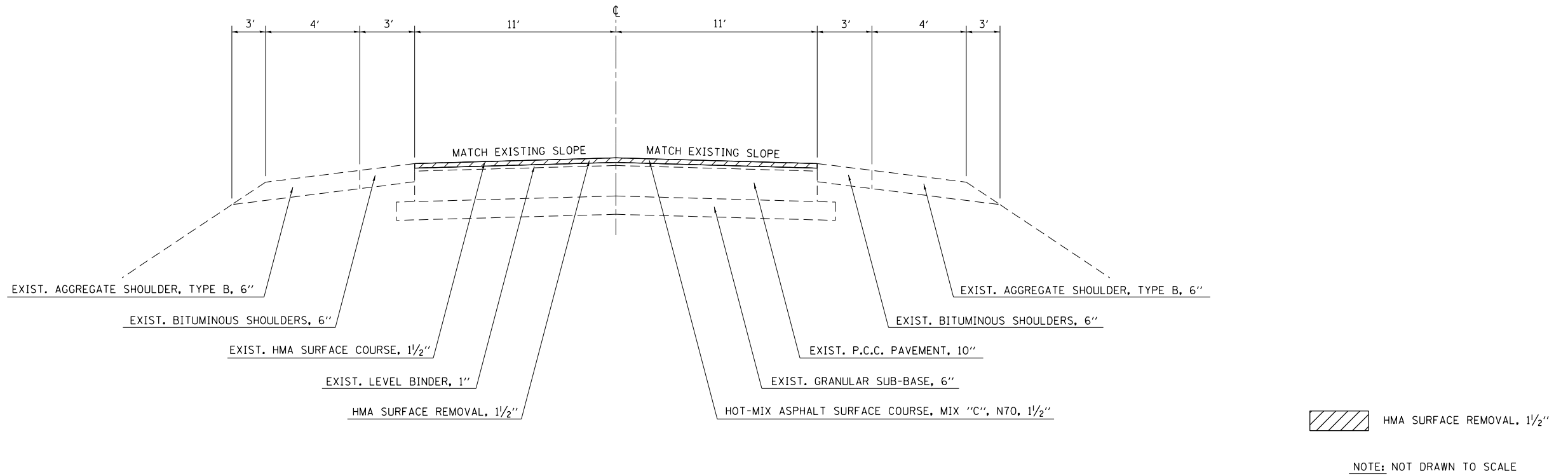
| SUMMARY OF QUANTITIES |   |        | URBAN<br>TOTAL<br>QUANTITIES | CONSTRUCTION TYPE CODE |  |
|-----------------------|---|--------|------------------------------|------------------------|--|
| CODE NO               | ITEM  | UNIT   |                              | 100% STATE<br>0005     |  |
| 70300210              | TEMPORARY PAVEMENT MARKING LETTERS AND<br>SYMBOLS       | SO FT  | 31.2                         | 31.2                   |  |
| 70300220              | TEMPORARY PAVEMENT MARKING - LINE 4"                    | FOOT   | 10467                        | 10467                  |  |
| 70300240              | TEMPORARY PAVEMENT MARKING - LINE 6"                    | FOOT   | 115                          | 115                    |  |
| 70300260              | TEMPORARY PAVEMENT MARKING - LINE 12"                   | FOOT   | 269                          | 269                    |  |
| 70300280              | TEMPORARY PAVEMENT MARKING - LINE 24"                   | FOOT   | 24                           | 24                     |  |
| 70301000              | WORK ZONE PAVEMENT MARKING REMOVAL                      | SO FT  | 133.3                        | 133.3                  |  |
| 78000100              | THERMOPLASTIC PAVEMENT MARKING - LETTERS AND<br>SYMBOLS | SO FT  | 31.2                         | 31.2                   |  |
| 78000200              | THERMOPLASTIC PAVEMENT MARKING - LINE 4"                | FOOT   | 10467                        | 10467                  |  |
| 78000400              | THERMOPLASTIC PAVEMENT MARKING - LINE 6"                | FOOT   | 115                          | 115                    |  |
| 78000600              | THERMOPLASTIC PAVEMENT MARKING - LINE 12"               | FOOT   | 269                          | 269                    |  |
| 78000650              | THERMOPLASTIC PAVEMENT MARKING - LINE 24"               | FOOT   | 24                           | 24                     |  |
| 78100100              | RAISED REFLECTIVE PAVEMENT MARKER                       | EACH   | 81                           | 81                     |  |
| X7015005              | CHANGEABLE MESSAGE SIGN                                 | CAL DA | 28                           | 28                     |  |

\* SPECIALTY ITEM



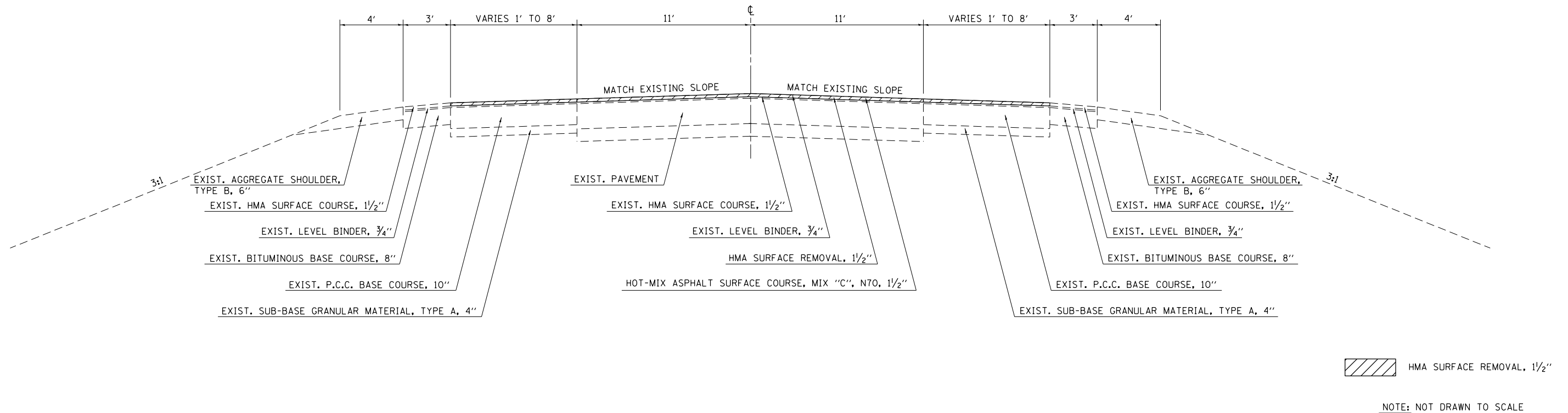
### TYPICAL CROSS SECTION

U.S. RTE. 40  
STA. 450A+83 TO STA. 481A+03



### TYPICAL CROSS SECTION

U.S. RTE. 40  
STA. 481A+03 TO STA. 488A+50



|   |                              |            |           |
|---|------------------------------|------------|-----------|
| FILE NAME =   | USER NAME = steffenmk        | DESIGNED - | REVISED - |
| c:\pwork\pwork\dot\steffenmk\d0348246\074633-sht-typicals.dgn |                              | DRAWN -    | REVISED - |
| Default   | PLOT SCALE = 100.0000' / in. | CHECKED -  | REVISED - |
|   | PLOT DATE = 10/15/2013       | DATE -     | REVISED - |

STATE OF ILLINOIS  
DEPARTMENT OF TRANSPORTATION

#### TYPICAL CROSS SECTIONS

SCALE: N/A SHEET 1 OF 1 SHEETS STA. TO STA.

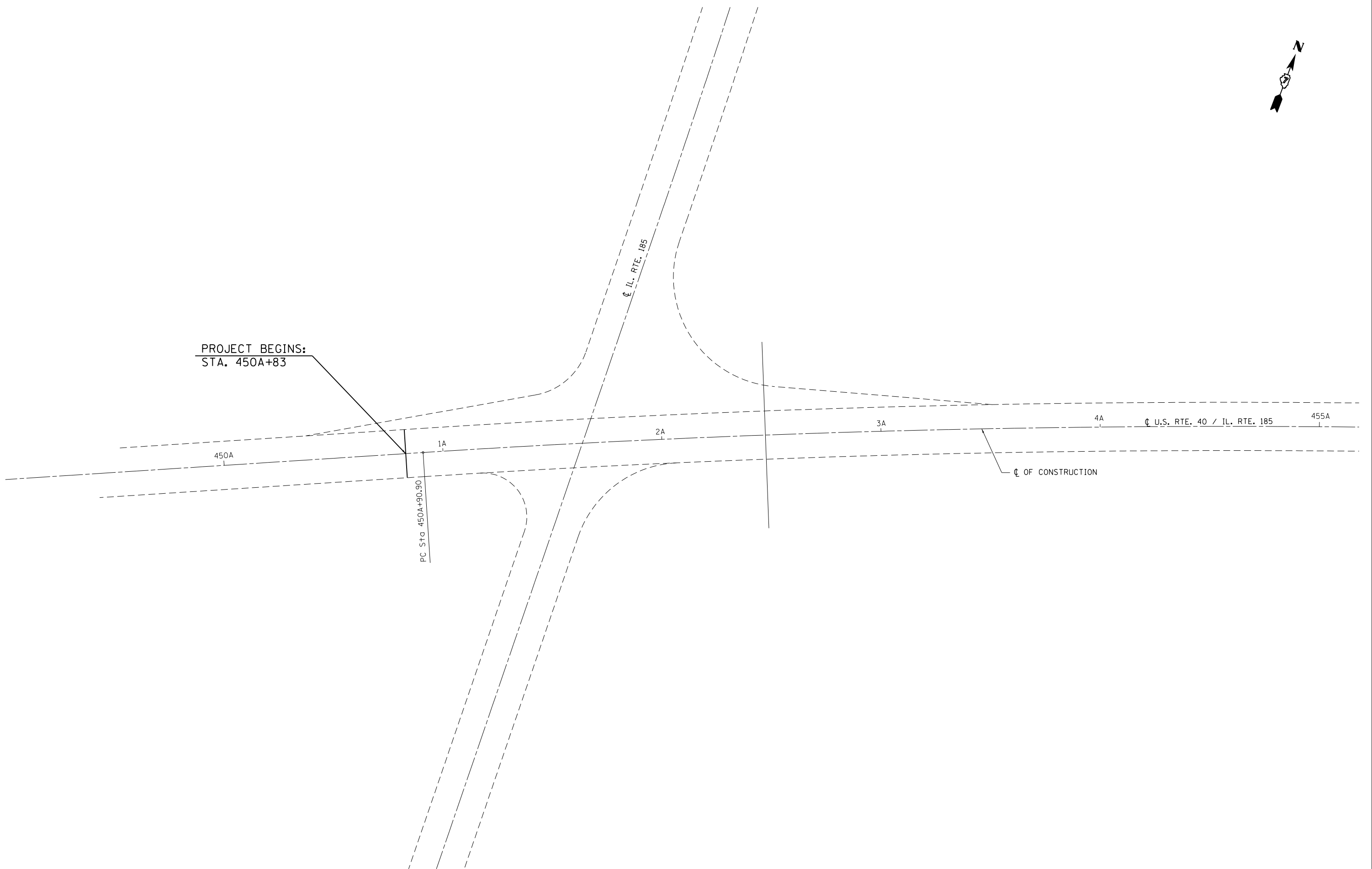
| F.A.P. RTE.        | SECTION              | COUNTY  | TOTAL SHEETS              | SHEET NO. |
|--------------------|----------------------|---------|---------------------------|-----------|
| 777                | D7 HMA RESURF 2014-3 | FAYETTE | 17                        | 5         |
| CONTRACT NO. 74633 |                      |         | ILLINOIS FED. AID PROJECT |           |

PAVEMENT MARKING SCHEDULE

| STATION TO STATION     | LENGTH      | THERMOPLASTIC PAVEMENT MARKING - LINE 4" WHITE | THERMOPLASTIC PAVEMENT MARKING - LINE 4" YELLOW | THERMOPLASTIC PAVEMENT MARKING - LINE 6" | THERMOPLASTIC PAVEMENT MARKING - LINE 12" | THERMOPLASTIC PAVEMENT MARKING - LINE 24" | THERMOPLASTIC PAVEMENT MARKING - LETTERS & SYMBOLS | TEMPORARY PAVEMENT MARKING - LINE 4" WHITE | TEMPORARY PAVEMENT MARKING - LINE 4" WHITE YELLOW | TEMPORARY PAVEMENT MARKING - LINE 6" WHITE | TEMPORARY PAVEMENT MARKING - LINE 12" YELLOW | TEMPORARY PAVEMENT MARKING - LINE 24" WHITE | TEMPORARY PAVEMENT MARKING - LETTERS & SYMBOLS | SHORT-TERM PAVEMENT MARKING | WORK ZONE PAVEMENT MARKING REMOVAL | RAISED REFLECTIVE PAVEMENT MARKER |
|------------------------|-------------|--|---|--|---|---|--|--|---|--|--|---|--|-----------------------------|------------------------------------|-----------------------------------|
|                        | FOOT        | FOOT   | FOOT  | FOOT                                     | FOOT                                      | FOOT                                      | SQ FT  | FOOT                                       | FOOT  | FOOT                                       | FOOT   | FOOT  | SQ FT  | FOOT                        | SQ FT                              | EACH                              |
| 450+83.00 TO 452+50.00 | 167.0       | 0.0  | 0.0   | 0.0                                      | 0.0                                       | 24.0                                      | 0.0  | 0.0  | 0.0   | 0.0  | 0.0  | 24.0  | 0.0  | 32.0                        | 5.3                                | 0.0                               |
| 452+50.00 TO 469+91.00 | 1741.0      | 3482.0   | 435.3   | 0.0                                      | 0.0                                       | 0.0                                       | 0.0  | 3482.0                                     | 435.3   | 0.0  | 0.0  | 0.0   | 0.0  | 352.0                       | 58.7                               | 22.0                              |
| 469+91.00 TO 477+01.00 | 710.0       | 1420.0   | 887.5   | 0.0                                      | 0.0                                       | 0.0                                       | 0.0  | 1420.0                                     | 887.5   | 0.0  | 0.0  | 0.0   | 0.0  | 144.0                       | 24.0                               | 9.0                               |
| 477+01.00 TO 477+30.89 | 29.9        | 59.8   | 59.8  | 0.0                                      | 0.0                                       | 0.0                                       | 0.0  | 59.8                                       | 59.8  | 0.0  | 0.0  | 0.0   | 0.0  | 8.0                         | 1.3                                | 0.0                               |
| 477+30.89 = 477+42.92  | 12.0        | 0.0  | 0.0   | 0.0                                      | 0.0                                       | 0.0                                       | 0.0  | 0.0  | 0.0   | 0.0  | 0.0  | 0.0   | 0.0  | 0.0                         | 0.0                                | 0.0                               |
| 477+42.92 TO 481+03.00 | 360.1       | 720.2  | 720.2   | 0.0                                      | 0.0                                       | 0.0                                       | 0.0  | 720.2                                      | 720.2   | 0.0  | 0.0  | 0.0   | 0.0  | 72.0                        | 12.0                               | 5.0                               |
| 481+03.00 TO 486+00.00 | 497.0       | 994.0  | 994.0   | 0.0                                      | 247.8                                     | 0.0                                       | 0.0  | 994.0                                      | 994.0   | 0.0  | 247.8  | 0.0   | 0.0  | 96.0                        | 16.0                               | 24.9                              |
| 486+00.00 TO 488+50.00 | 250.0       | 300.0  | 394.0   | 115.0                                    | 21.0                                      | 0.0                                       | 31.2   | 300.0                                      | 394.0   | 115.0                                      | 21.0   | 0.0   | 31.2   | 96.0                        | 16.0                               | 20.0                              |
| <b>TOTAL:</b>          | <b>3767</b> | <b>6975.94</b>                                 | <b>3490.69</b>                                  | <b>115</b>                               | <b>268.8</b>                              | <b>24</b>                                 | <b>31.2</b>  | <b>6975.94</b>                             | <b>3490.69</b>                                    | <b>115</b>                                 | <b>268.8</b>                                 | <b>24</b>                                   | <b>31.2</b>                                    | <b>800.0</b>                | <b>133.3</b>                       | <b>81</b>                         |

RESURFACING SCHEDULE

| STATION TO STATION          | LENGTH | AVERAGE PAVEMENT WIDTH | AREA        | HOT-MIX ASPHALT SURFACE REMOVAL, 1 1/2" | BITUMINOUS MATERIALS (PRIME COAT) | AGGREGATE (PRIME COAT) | HOT-MIX ASPHALT SURFACE COURSE, MIX "C", N70 | TEMPORARY RAMP |
|-----------------------------|--------|------------------------|-------------|---|-----------------------------------|------------------------|--|----------------|
|                             | FOOT   | FOOT                   | SQ YD       | SQ YD                                   | GALLON                            | TON                    | TON  | SQ YD          |
| 450+83.00 TO 477+01.00      | 2618.0 | 22.0                   | 6400        | 6400                                    | 640                               | 13                     | 538  | 74             |
| 477+30.89 BK = 477+42.92 AH |        |                        |             |   |                                   |                        |  |                |
| 477+01.00 TO 479+31.00      | 230.0  |                        |             |   |                                   |                        |  |                |
| 479+31.00 TO 481+03.00      | 172.0  | 22.0                   | 420         | 420                                     | 42                                | 1                      | 35   | 12             |
| 481+03.00 TO 486+00.00      | 497.0  | 30.0                   | 1657        | 1657                                    | 166                               | 3                      | 139  |                |
| 486+00.00 TO 488+50.00      | 250.0  | 38.0                   | 1056        | 1056                                    | 106                               | 2                      | 89   | 21             |
| <b>TOTALS</b>               |        |                        | <b>9532</b> | <b>9532</b>                             | <b>953</b>                        | <b>19</b>              | <b>801</b>                                   | <b>108</b>     |



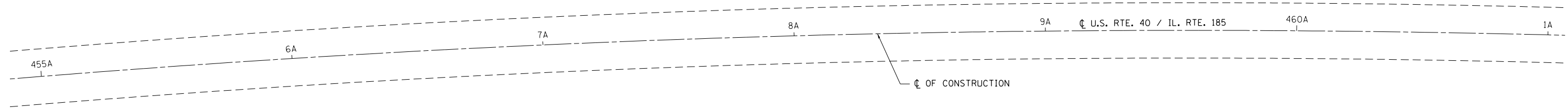
|   |                             |            |           |
|---|-----------------------------|------------|-----------|
| FILE NAME =   | USER NAME = steffenmk       | DESIGNED - | REVISED - |
| c:\pw\work\p\dot\steffenmk\d0348246\0774633-sht-pln.dgn | 74633-sht-pln.dgn           | DRAWN -    | REVISED - |
| Default   | PLOT SCALE = 40.0000' / in. | CHECKED -  | REVISED - |
|   | PLOT DATE = 10/15/2013      | DATE -     | REVISED - |

**STATE OF ILLINOIS  
DEPARTMENT OF TRANSPORTATION**

**PLAN**

SCALE: 20      SHEET 1 OF 7 SHEETS      STA. 450A+83 TO STA. 455A+00

| F.A.P. RTE.        | SECTION              | COUNTY  | TOTAL SHEETS              | SHEET NO. |
|--------------------|----------------------|---------|---------------------------|-----------|
| 777                | D7 HMA RESURF 2014-3 | FAYETTE | 17                        | 7         |
| CONTRACT NO. 74633 |                      |         | ILLINOIS FED. AID PROJECT |           |



|  |                             |            |           |
|--|-----------------------------|------------|-----------|
| FILE NAME =  | USER NAME = steffenmk       | DESIGNED - | REVISED - |
| c:\pw\work\p\dot\steffenmk\d0348246\074633-sht-pln.dgn | 74633-sht-pln.dgn           | DRAWN -    | REVISED - |
| Default  | PLOT SCALE = 40.0000' / in. | CHECKED -  | REVISED - |
|  | PLOT DATE = 10/15/2013      | DATE -     | REVISED - |

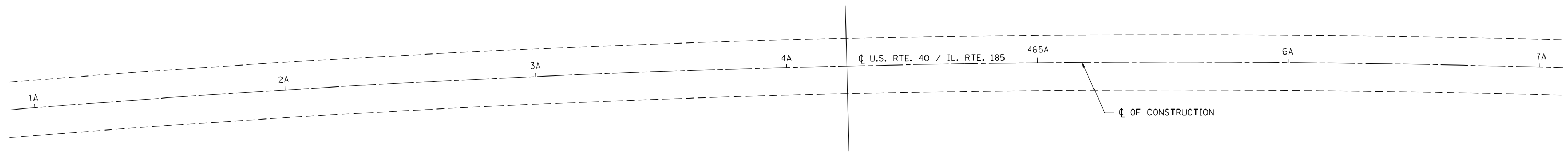
**STATE OF ILLINOIS  
DEPARTMENT OF TRANSPORTATION**

**PLAN**

SCALE: 20      SHEET 2 OF 7 SHEETS      STA. 455A+00 TO STA. 461A+00

| F.A.P. RTE.               | SECTION              | COUNTY  | TOTAL SHEETS       | SHEET NO. |
|---------------------------|----------------------|---------|--------------------|-----------|
| 777                       | D7 HMA RESURF 2014-3 | FAYETTE | 17                 | 8         |
| ILLINOIS FED. AID PROJECT |                      |         | CONTRACT NO. 74633 |           |





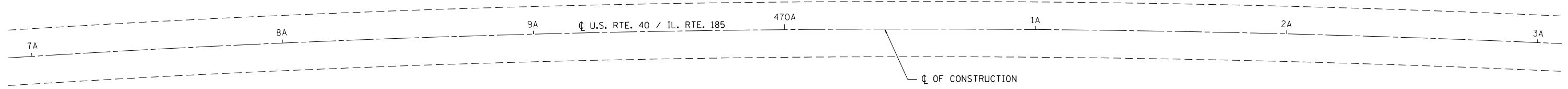
|  |                             |            |           |
|--|-----------------------------|------------|-----------|
| FILE NAME =  | USER NAME = steffenmk       | DESIGNED - | REVISED - |
| c:\pw\work\p\idot\steffenmk\d0348246\074633-sht-plan.dgn | 74633-sht-plan.dgn          | DRAWN -    | REVISED - |
| Default  | PLOT SCALE = 40.0000' / in. | CHECKED -  | REVISED - |
|  | PLOT DATE = 10/15/2013      | DATE -     | REVISED - |

**STATE OF ILLINOIS  
DEPARTMENT OF TRANSPORTATION**

**PLAN**

SCALE: 20 SHEET 3 OF 7 SHEETS STA. 461A+00 TO STA. 467A+00

| F.A.P. RTE.               | SECTION              | COUNTY  | TOTAL SHEETS       | SHEET NO. |
|---------------------------|----------------------|---------|--------------------|-----------|
| 777                       | D7 HMA RESURF 2014-3 | FAYETTE | 17                 | 9         |
| ILLINOIS FED. AID PROJECT |                      |         | CONTRACT NO. 74633 |           |



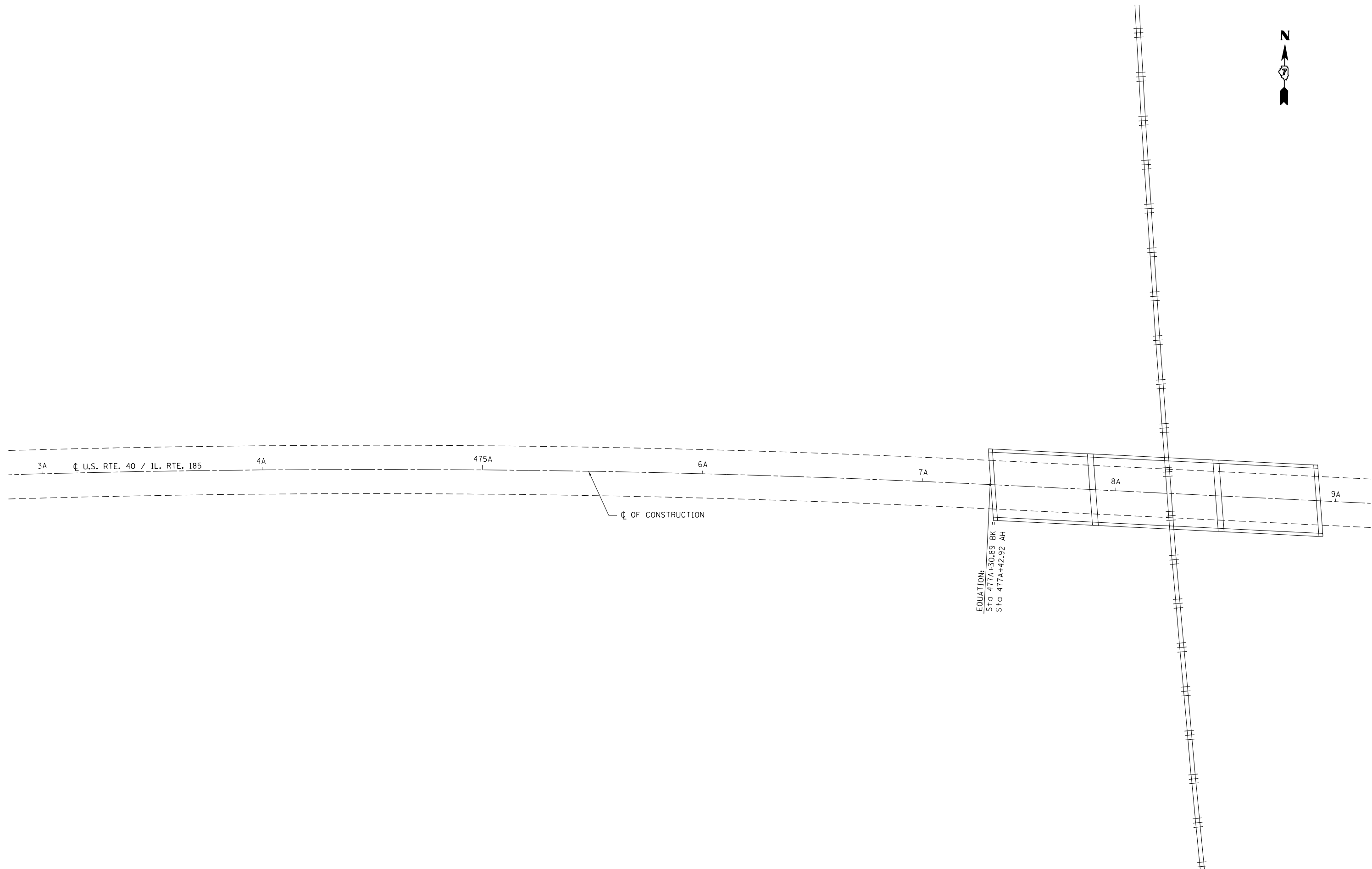
|   |                             |            |           |
|---|-----------------------------|------------|-----------|
| FILE NAME =   | USER NAME = steffenmk       | DESIGNED - | REVISED - |
| c:\pw\work\p\dot\steffenmk\d0348246\074633-sht-plan.dgn | 74633-sht-plan.dgn          | DRAWN -    | REVISED - |
| Default   | PLOT SCALE = 40.0000' / in. | CHECKED -  | REVISED - |
|   | PLOT DATE = 10/15/2013      | DATE -     | REVISED - |

**STATE OF ILLINOIS  
DEPARTMENT OF TRANSPORTATION**

**PLAN**

SCALE: 20 SHEET 4 OF 7 SHEETS STA. 467A+00 TO STA. 473A+00

| F.A.P. RTE.               | SECTION              | COUNTY  | TOTAL SHEETS       | SHEET NO. |
|---------------------------|----------------------|---------|--------------------|-----------|
| 777                       | D7 HMA RESURF 2014-3 | FAYETTE | 17                 | 10        |
| ILLINOIS FED. AID PROJECT |                      |         | CONTRACT NO. 74633 |           |



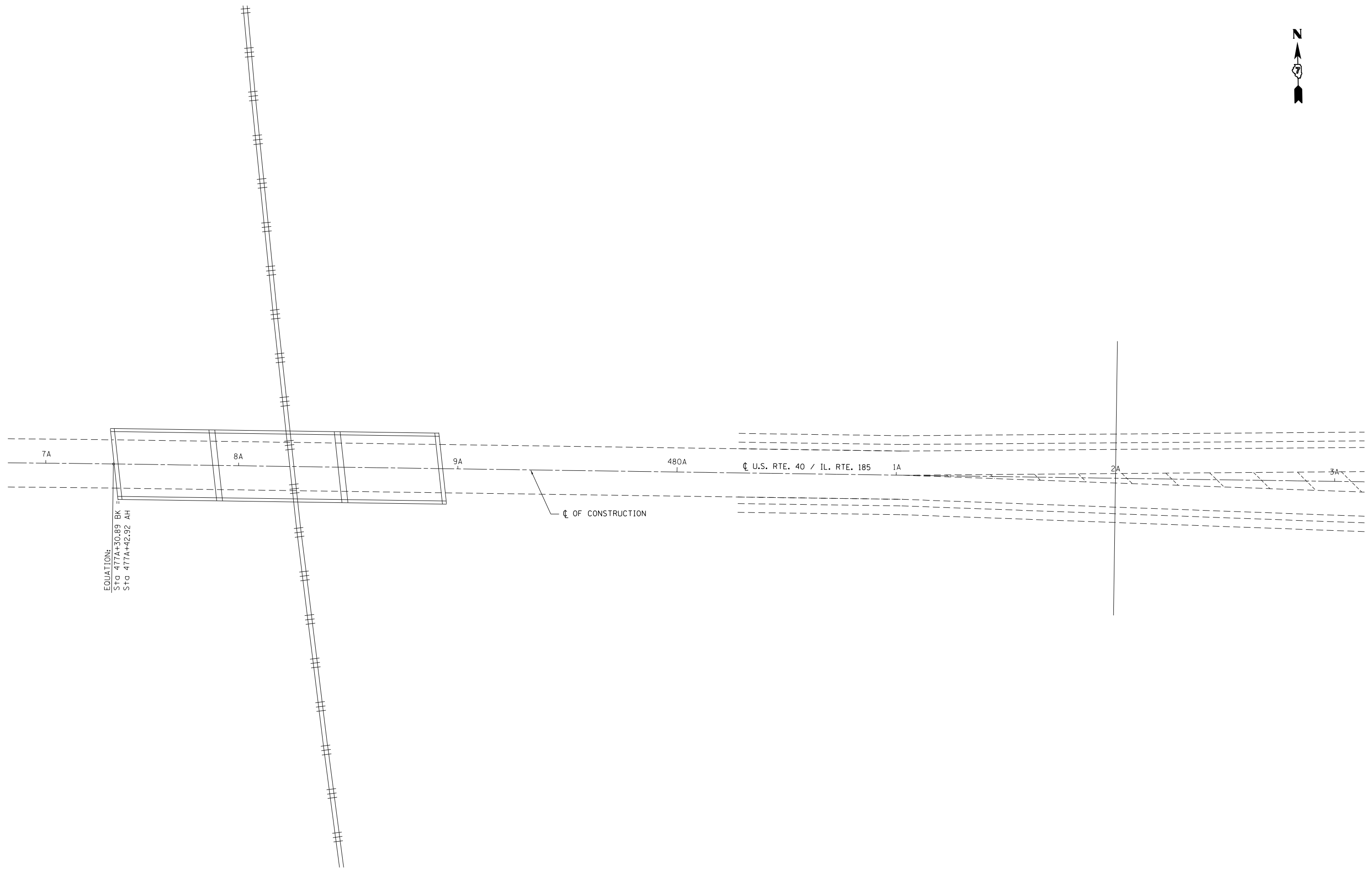
|   |                             |            |           |
|---|-----------------------------|------------|-----------|
| FILE NAME =   | USER NAME = steffenmk       | DESIGNED - | REVISED - |
| c:\pw\work\p\dot\steffenmk\d0348246\074633-sht-plan.dgn | 74633-sht-plan.dgn          | DRAWN -    | REVISED - |
| Default   | PLOT SCALE = 40.0000' / in. | CHECKED -  | REVISED - |
|   | PLOT DATE = 10/15/2013      | DATE -     | REVISED - |

**STATE OF ILLINOIS  
DEPARTMENT OF TRANSPORTATION**

**PLAN**

SCALE: 20 SHEET 5 OF 7 SHEETS STA. 473A+00 TO STA. 479A+00

| F.A.P. RTE.        | SECTION              | COUNTY  | TOTAL SHEETS              | SHEET NO. |
|--------------------|----------------------|---------|---------------------------|-----------|
| 777                | D7 HMA RESURF 2014-3 | FAYETTE | 17                        | 11        |
| CONTRACT NO. 74633 |                      |         | ILLINOIS FED. AID PROJECT |           |



EQUATION:  
 Sta 477A+30.89 BK  
 Sta 477A+42.92 AH

CL OF CONSTRUCTION

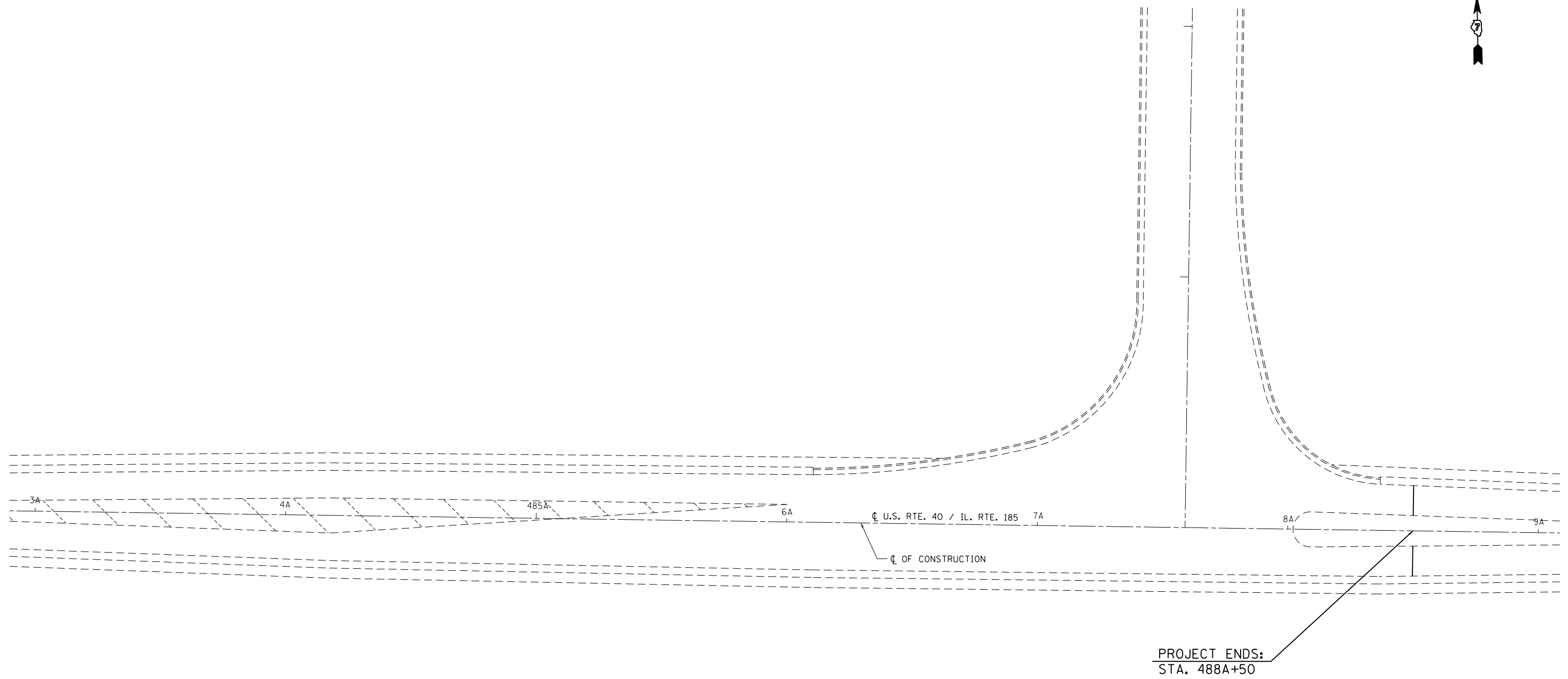
U.S. RTE. 40 / IL. RTE. 185

|   |                             |            |           |
|---|-----------------------------|------------|-----------|
| FILE NAME =   | USER NAME = steffenmk       | DESIGNED - | REVISED - |
| c:\pw\work\p\dot\stefjenmk\d0348246\074633-sht-plan.dgn |                             | DRAWN -    | REVISED - |
| Default   | PLOT SCALE = 40.0000' / in. | CHECKED -  | REVISED - |
|   | PLOT DATE = 10/15/2013      | DATE -     | REVISED - |

**STATE OF ILLINOIS  
 DEPARTMENT OF TRANSPORTATION**

**PLAN**  
 SCALE: 20 SHEET 6 OF 7 SHEETS STA. 477A+00 TO STA. 483A+00

| F.A.P. RTE.               | SECTION              | COUNTY  | TOTAL SHEETS       | SHEET NO. |
|---------------------------|----------------------|---------|--------------------|-----------|
| 777                       | D7 HMA RESURF 2014-3 | FAYETTE | 17                 | 12        |
| ILLINOIS FED. AID PROJECT |                      |         | CONTRACT NO. 74633 |           |

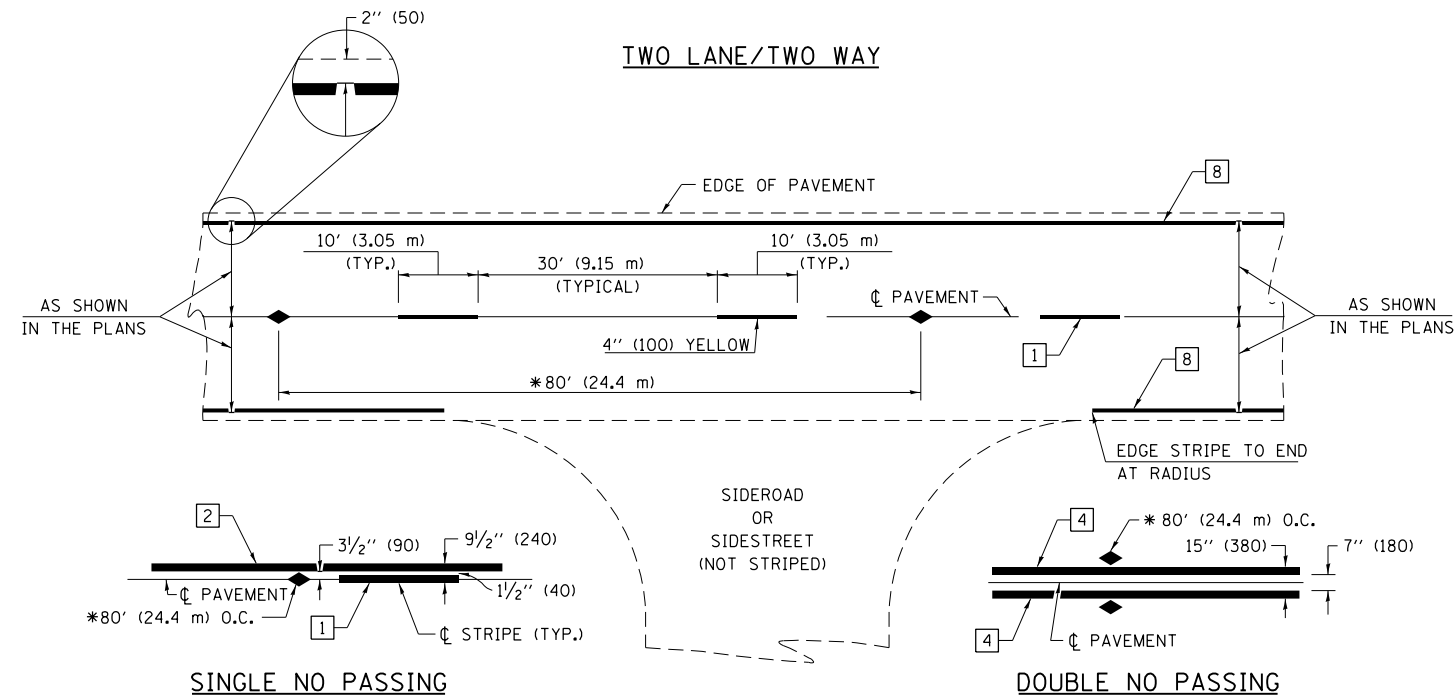


|  |                             |            |           |
|--|-----------------------------|------------|-----------|
| FILE NAME =  | USER NAME = steffenmk       | DESIGNED - | REVISED - |
| c:\pw\work\p\dot\steffenmk\d0348246\074633-sht-pln.dgn | 74633-sht-pln.dgn           | DRAWN -    | REVISED - |
| Default  | PLOT SCALE = 40.0000' / in. | CHECKED -  | REVISED - |
|  | PLOT DATE = 10/15/2013      | DATE -     | REVISED - |

**STATE OF ILLINOIS  
DEPARTMENT OF TRANSPORTATION**

|              |                 |      |        |
|--------------|-----------------|------|--------|
| <b>PLAN</b>  |                 |      |        |
| SCALE: 20    | SHEET 7         | OF 7 | SHEETS |
| STA. 483A+00 | TO STA. 488A+50 |      |        |

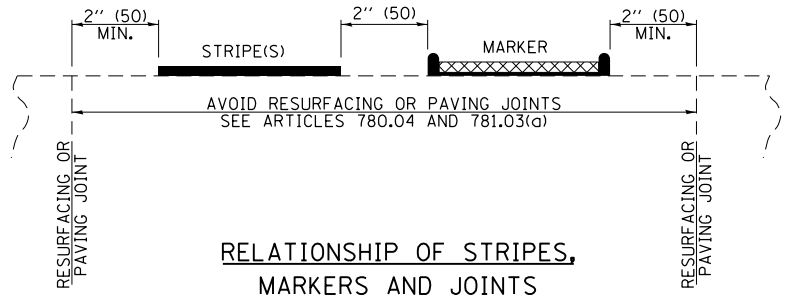
| F.A.P. RTE.               | SECTION              | COUNTY  | TOTAL SHEETS | SHEET NO. |
|---------------------------|----------------------|---------|--------------|-----------|
| 777                       | D7 HMA RESURF 2014-3 | FAYETTE | 17           | 13        |
| <b>CONTRACT NO. 74633</b> |                      |         |              |           |
| ILLINOIS FED. AID PROJECT |                      |         |              |           |



\* REDUCE TO 40' (12.2 m) O.C. ON CURVES WITH POSTED OR ADVISORY SPEEDS OF 45 mph (70 km/h) OR LESS.

PAVEMENT MARKING LEGEND

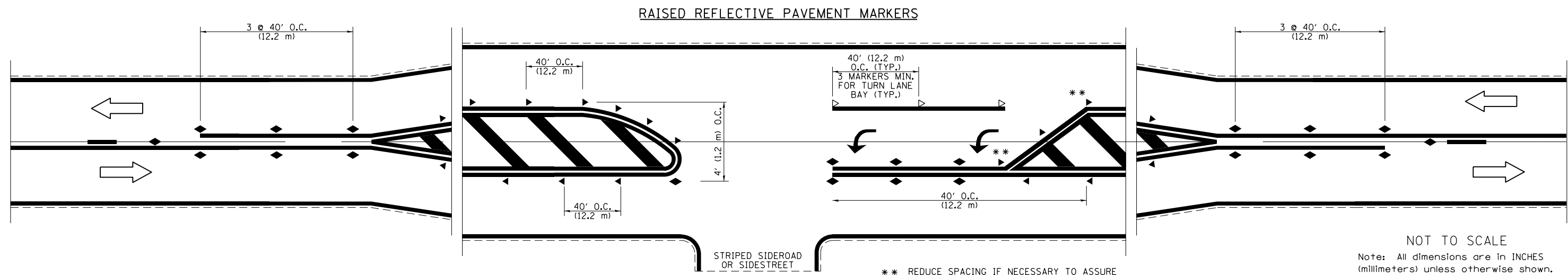
- 1 4" (100) SKIP-DASH (YELLOW)
- 2 4" (100) SOLID (YELLOW)
- 3 12" (300) DIAGONAL (YELLOW)
- 4 4" (100) DOUBLE YELLOW (NARROW)
- 5 12" (300) SOLID WHITE
- 6 RESERVED
- 7 6" (150) SKIP-DASH (WHITE)
- 8 4" (100) SOLID (WHITE)
- 9 12" (300) DIAGONAL (WHITE)
- 10 6" (150) SOLID (WHITE)
- 11 24" (600) STOP BAR (WHITE)
- 12 8" (200) SOLID (WHITE)
- 13 4" (100) PARKING WHITE



RELATIONSHIP OF STRIPES, MARKERS AND JOINTS

TYPICAL PAVEMENT MARKERS LEGEND

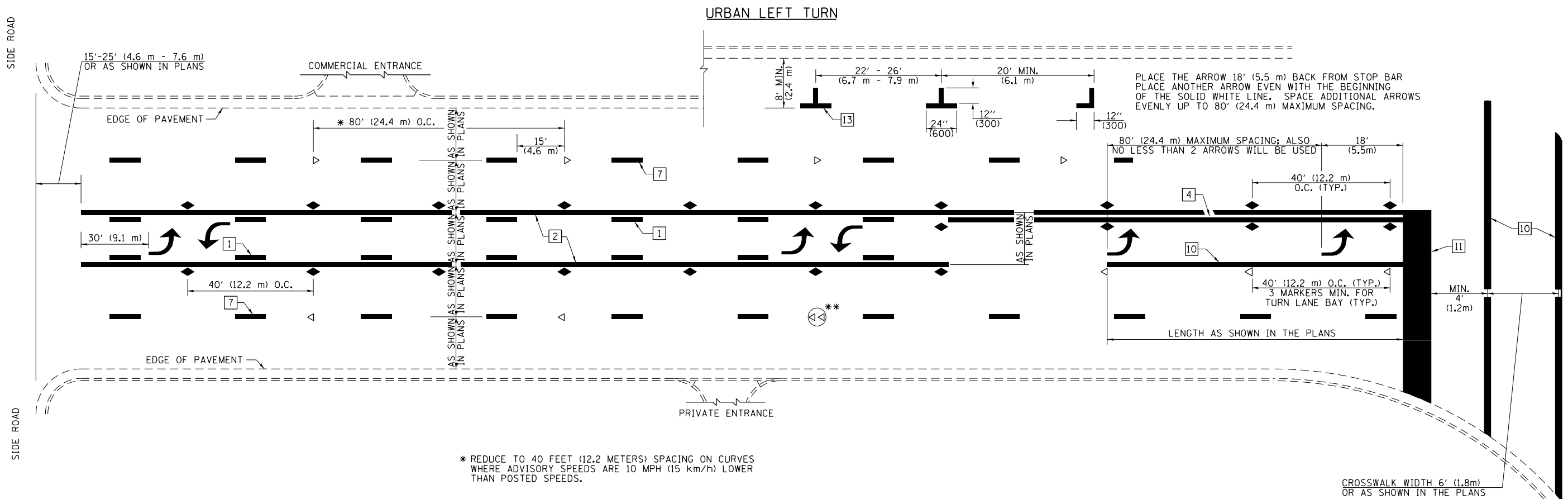
- ◆ TWO-WAY AMBER MARKER
- ▶ ONE-WAY AMBER MARKER
- ▷ ONE-WAY CRYSTAL MARKER



NOT TO SCALE  
Note: All dimensions are in INCHES (millimeters) unless otherwise shown.

|  |                              |            |           |   |   |  |  |                           |                      |         |              |           |
|--|------------------------------|------------|-----------|---|---|--|--|---------------------------|----------------------|---------|--------------|-----------|
| FILE NAME =  | USER NAME = steffenmk        | DESIGNED - | REVISED - | <b>STATE OF ILLINOIS<br/>DEPARTMENT OF TRANSPORTATION</b> | <b>PAVEMENT MARKING AND RAISED REFLECTIVE PAVEMENT MARKERS<br/>(RURAL &amp; URBAN APPLICATIONS)</b> |  |  | F.A.P. RTE.               | SECTION              | COUNTY  | TOTAL SHEETS | SHEET NO. |
| ci:\pw\work\p\dot\steffenmk\d0348246\0774633-sht-details.dgn | PLOT SCALE = 100.0000' / in. | DRAWN -    | REVISED - |   |   |  |  | 777                       | D7 HMA RESURF 2014-3 | FAYETTE | 17           | 14        |
|  | PLOT DATE = 10/15/2013       | CHECKED -  | REVISED - |   |   |  |  | CONTRACT NO. 74633        |                      |         |              |           |
|  |                              | DATE -     | REVISED - |   |   |  |  | ILLINOIS FED. AID PROJECT |                      |         |              |           |

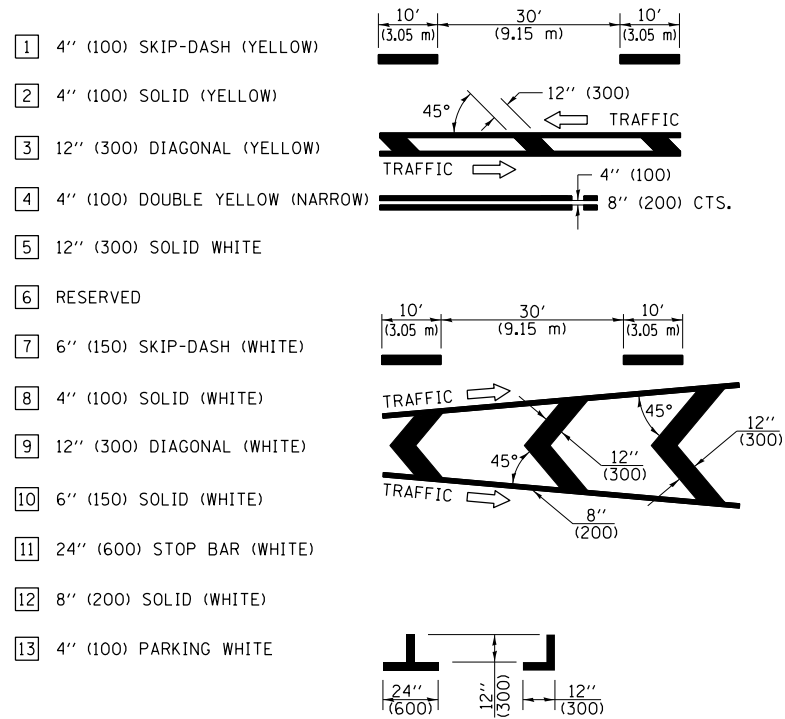
SCALE: N/A SHEET NO. 1 OF 4 SHEETS STA. TO STA.



\* REDUCE TO 40 FEET (12.2 METERS) SPACING ON CURVES WHERE ADVISORY SPEEDS ARE 10 MPH (15 km/h) LOWER THAN POSTED SPEEDS.

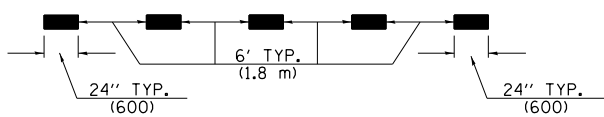
\*\* DOUBLE LANE LINE MARKERS SHALL BE SPECIFIED AND SPACED AS SHOWN IN HIGHWAY STANDARD 781001 FOR MULTI-LANE DIVIDED AND UNDIVIDED HIGHWAYS.

**PAVEMENT MARKING LEGEND**

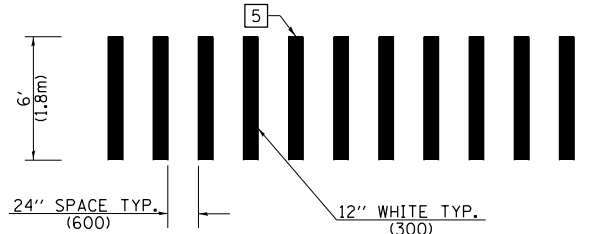


**GENERAL NOTES**

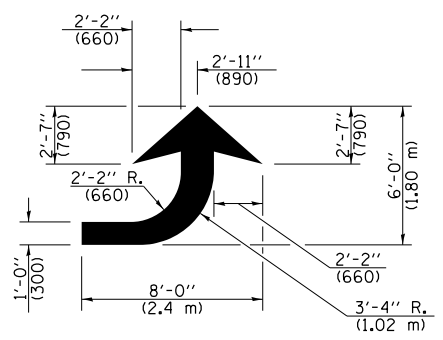
- TURN ARROW PAIRS SHALL BE PLACED AT 250' (75 m) INTERVALS AND SHALL BE EVENLY SPACED BETWEEN BOTH ENDS OF THE BIDIRECTIONAL LEFT TURN LANE. USE A MINIMUM OF TWO PAIRS PER BLOCK.
- THE SOLID YELLOW PAVEMENT MARKINGS [2] SHOULD GENERALLY START OR END NEAR THE RADIUS POINT OF EACH STREET RETURN EXCEPT WHERE ONE OR BOTH ENDS WOULD INCLUDE STOP BARS.
- THE SKIP-DASH PAVEMENT MARKINGS [1] OR [7] SHOULD BE CENTERED BETWEEN BOTH ENDS OF EACH CITY BLOCK AND SHALL BE PLACED SO THEY LINE UP ACROSS FROM EACH OTHER.
- USE LARGE ARROW SIZE FOR BOTH RURAL AND URBAN LOCATIONS. (SEE LAST PAGE OF SECTION 780x FOR SYMBOLS TABLE)
- LANE LINE EXTENSIONS SHALL BE THE SAME COLOR AND WIDTH AS THE LANE LINE BEING EXTENDED.



**LANE LINE EXTENSIONS**

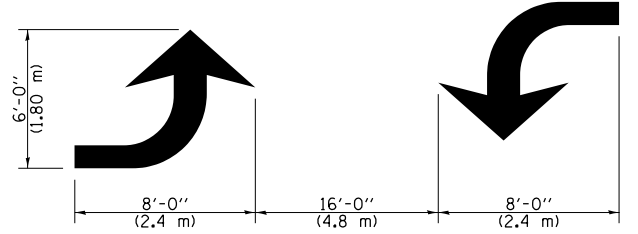


**CROSSWALK DETAIL (DECATUR CITY LIMITS ONLY)**



**LEFT ARROW**

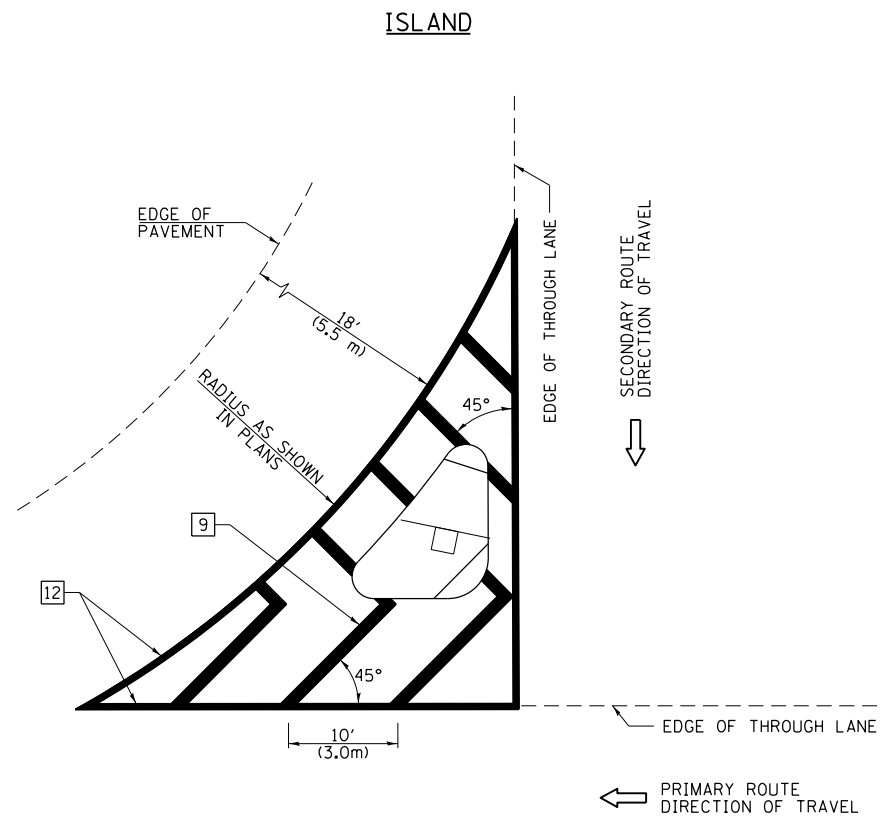
REVERSE FOR RIGHT ARROW  
AREA = 15.6 SQ. FT. (1.47 m<sup>2</sup>)  
(WHITE)



**TYPICAL DOUBLE TURN ARROWS (WHITE)**

NOT TO SCALE  
Note: All dimensions are in INCHES (millimeters) unless otherwise shown.

|  |                              |            |           |   |   |  |  |             |                      |         |              |           |
|--|------------------------------|------------|-----------|---|---|--|--|-------------|----------------------|---------|--------------|-----------|
| FILE NAME =  | USER NAME = steffenmk        | DESIGNED - | REVISED - | <b>STATE OF ILLINOIS<br/>DEPARTMENT OF TRANSPORTATION</b> | <b>PAVEMENT MARKING AND RAISED REFLECTIVE PAVEMENT MARKERS<br/>(RURAL &amp; URBAN APPLICATIONS)</b> |  |  | F.A.P. RTE. | SECTION              | COUNTY  | TOTAL SHEETS | SHEET NO. |
| ci:\pw\work\p\idot\stevfenmk\d0348246\074633-sht-details.dgn | PLOT SCALE = 100.0000' / in. | DRAWN -    | REVISED - |   |   |  |  | 777         | D7 HMA RESURF 2014-3 | FAYETTE | 17           | 15        |
|  | PLOT DATE = 10/15/2013       | CHECKED -  | REVISED - |   | CONTRACT NO. 74633  |  |  |             |                      |         |              |           |
|  |                              | DATE -     | REVISED - |   | ILLINOIS FED. AID PROJECT   |  |  |             |                      |         |              |           |

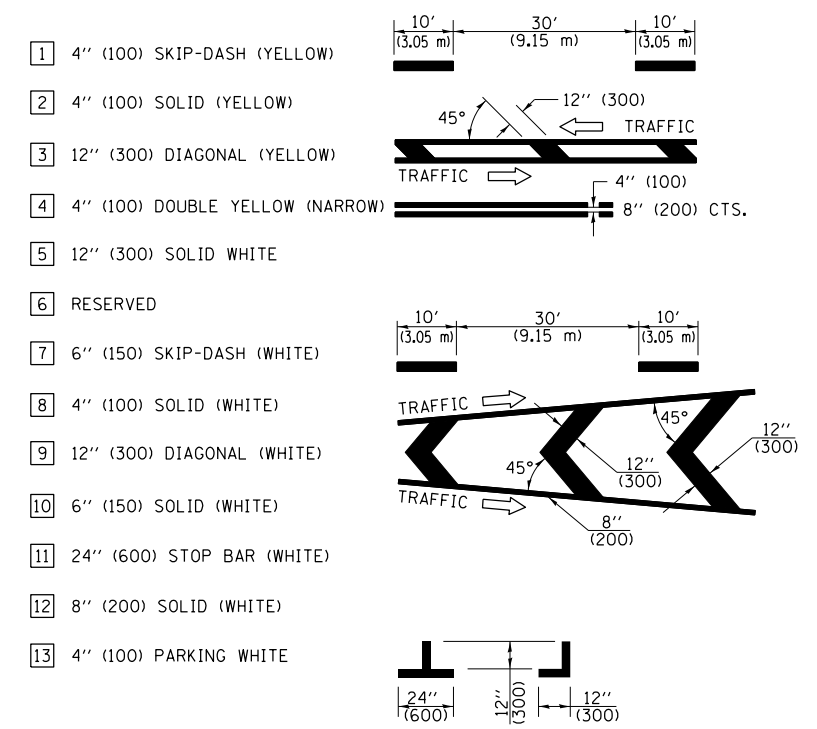


**GENERAL NOTES**

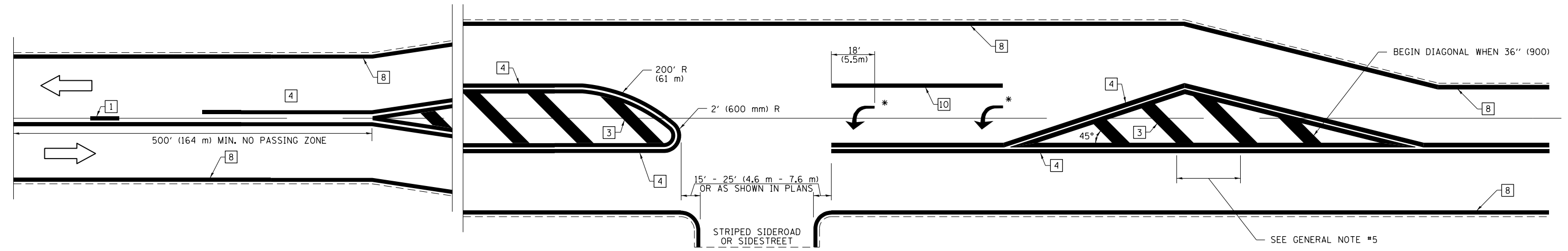
1. RAISED AND CORRUGATED MEDIANS SHALL BE OUTLINED WITH [2] IF PRESENT.
2. SOME OF THE INFORMATION INCLUDED WITH THIS DETAIL MAY NOT BE APPLICABLE TO THIS IMPROVEMENT.
3. PAVEMENT MARKINGS ARE TO BE EXTENDED THROUGH OMISSIONS WHEN APPLICABLE.
4. FINAL PAVEMENT MARKINGS SHALL BE IN PLACE PRIOR TO PLACING ANY RAISED REFLECTIVE PAVEMENT MARKERS.
5. THE FOLLOWING CRITERIA SHALL BE USED FOR SELECTING THE DIAGONAL PAVEMENT MARKING SPACING:
 

|                        |             |
|------------------------|-------------|
| < 30 MPH (< 50 km/h)   | 15' (4.5 m) |
| 30-45 MPH (50-75 km/h) | 20' (6.0 m) |
| > 45 MPH (> 75 km/h)   | 30' (9.0 m) |

**PAVEMENT MARKING LEGEND**



**RURAL LEFT TURN STRIPING**



\* PLACE AN ARROW 18' (5.5 m) BACK FROM STOP BAR. PLACE ANOTHER ARROW EVEN WITH THE BEGINNING OF THE SOLID WHITE LINE. SPACE ADDITIONAL ARROWS EVENLY UP TO 80' (24.4 m) MAXIMUM SPACING. USE MINIMUM OF 2 ARROWS.

NOT TO SCALE  
 Note: All dimensions are in INCHES (millimeters) unless otherwise shown.

**DISTRICT 7 DETAIL NO. 7800001**

|   |                               |            |           |
|---|-------------------------------|------------|-----------|
| FILE NAME =   | USER NAME = steffenmk         | DESIGNED - | REVISED - |
| ei:\pwork\pwork\stevfenmk\d0348246\074633-sht-details.dgn |                               | DRAWN -    | REVISED - |
|   | PLOT SCALE = 100.0000' / 1in. | CHECKED -  | REVISED - |
|   | PLOT DATE = 10/15/2013        | DATE -     | REVISED - |

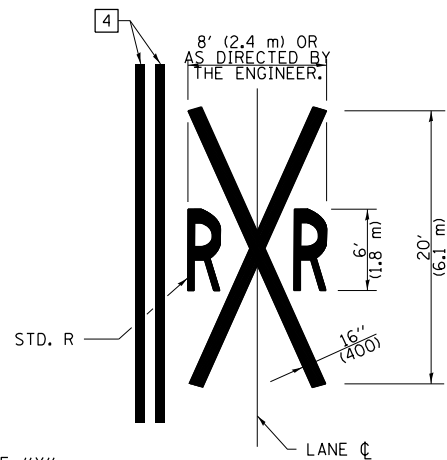
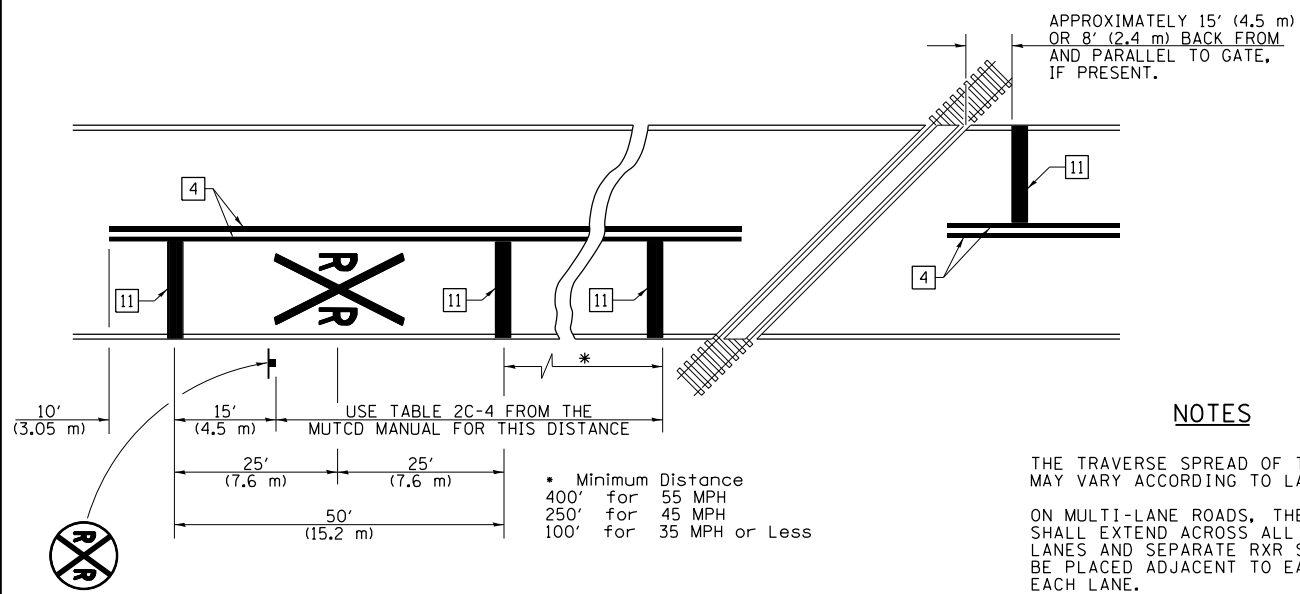
**STATE OF ILLINOIS  
 DEPARTMENT OF TRANSPORTATION**

|   |                         |      |         |
|---|-------------------------|------|---------|
| <b>PAVEMENT MARKING AND RAISED REFLECTIVE PAVEMENT MARKERS<br/>(RURAL &amp; URBAN APPLICATIONS)</b> |                         |      |         |
| SCALE: N/A  | SHEET NO. 3 OF 4 SHEETS | STA. | TO STA. |

|                           |                      |         |              |           |
|---------------------------|----------------------|---------|--------------|-----------|
| F.A.P. RTE.               | SECTION              | COUNTY  | TOTAL SHEETS | SHEET NO. |
| 777                       | D7 HMA RESURF 2014-3 | FAYETTE | 17           | 16        |
| CONTRACT NO. 74633        |                      |         |              |           |
| ILLINOIS FED. AID PROJECT |                      |         |              |           |



PAVEMENT MARKINGS AT RAILROAD-HIGHWAY GRADE CROSSING

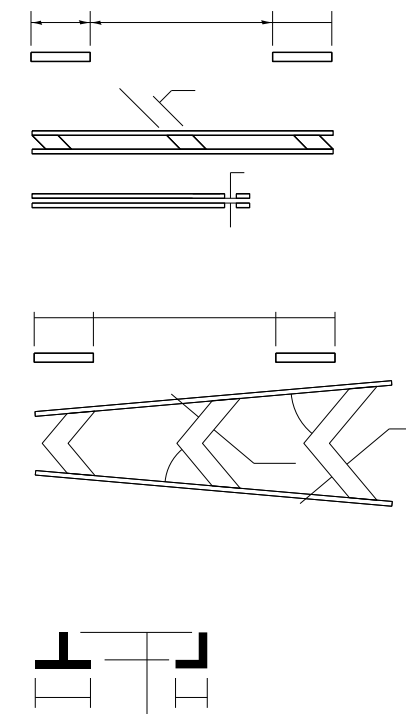


NOTES

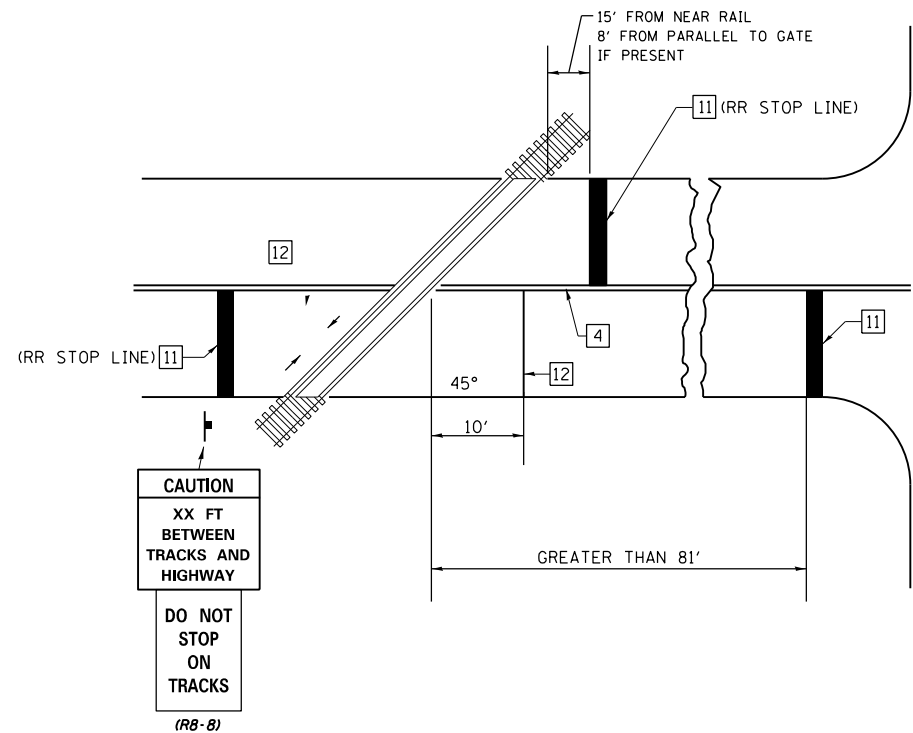
THE TRAVERSE SPREAD OF THE "X" MAY VARY ACCORDING TO LANE WIDTH.

ON MULTI-LANE ROADS, THE STOP LINES SHALL EXTEND ACROSS ALL APPROACH LANES AND SEPARATE RXR SYMBOLS SHALL BE PLACED ADJACENT TO EACH OTHER IN EACH LANE.

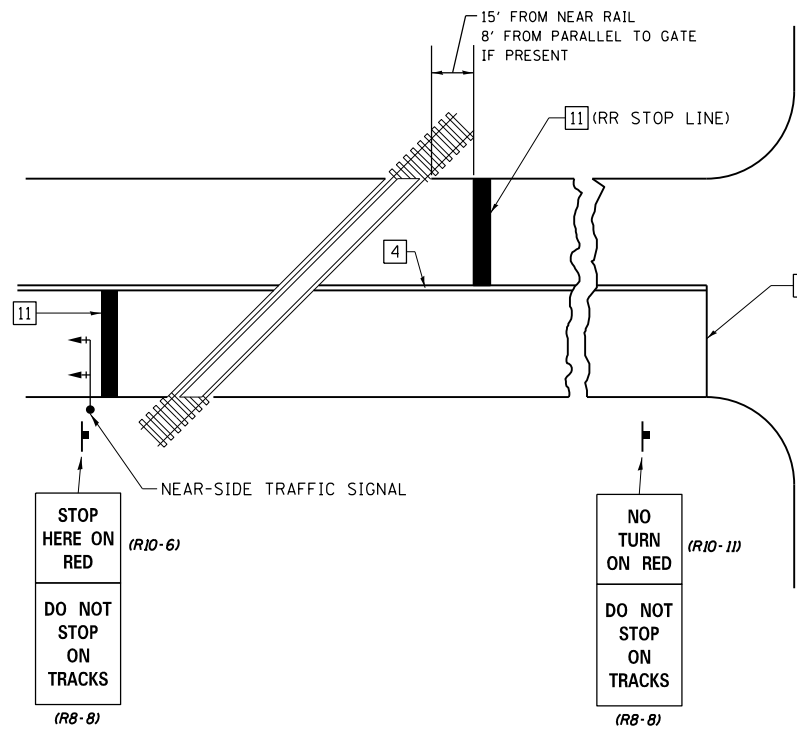
WHEN THE PAVEMENT MARKING SYMBOL IS USED, A PORTION OF THE SYMBOL SHOULD BE LOCATED DIRECTLY ADJACENT TO THE ADVANCE WARNING SIGN (W10-1) AS PLACED BY TABLE II-1, CONDITION B OF THE MUTCD.



RAILROAD CROSSING WITH INTERCONNECT ONLY



RAILROAD CROSSING WITH INTERCONNECT AND PRE-SIGNALS



GENERAL NOTES

SUPPLEMENTAL PAVEMENT MARKING TREATMENT FOR RAILROAD-HIGHWAY GRADE CROSSING

NOT TO SCALE  
Note: All dimensions are in INCHES (millimeters) unless otherwise shown.

|  |                               |            |           |
|--|-------------------------------|------------|-----------|
| FILE NAME =  | USER NAME = steffenmk         | DESIGNED - | REVISED - |
| c:\pwork\pwork\stevfenmk\d0348246\074633-sht-details.dgn |                               | DRAWN -    | REVISED - |
|  | PLOT SCALE = 100.0000' / 1in. | CHECKED -  | REVISED - |
|  | PLOT DATE = 10/15/2013        | DATE -     | REVISED - |

STATE OF ILLINOIS  
DEPARTMENT OF TRANSPORTATION

PAVEMENT MARKING AND RAISED REFLECTIVE PAVEMENT MARKERS  
(RURAL & URBAN APPLICATIONS)

SCALE: N/A SHEET NO. 4 OF 4 SHEETS STA. TO STA.

|                               |                      |         |              |           |
|-------------------------------|----------------------|---------|--------------|-----------|
| DISTRICT 7 DETAIL NO. 7800001 |                      |         |              |           |
| F.A.P. RTE.                   | SECTION              | COUNTY  | TOTAL SHEETS | SHEET NO. |
| 777                           | D7 HMA RESURF 2014-3 | FAYETTE | 17           | 17        |
| CONTRACT NO. 74633            |                      |         |              |           |
| ILLINOIS FED. AID PROJECT     |                      |         |              |           |