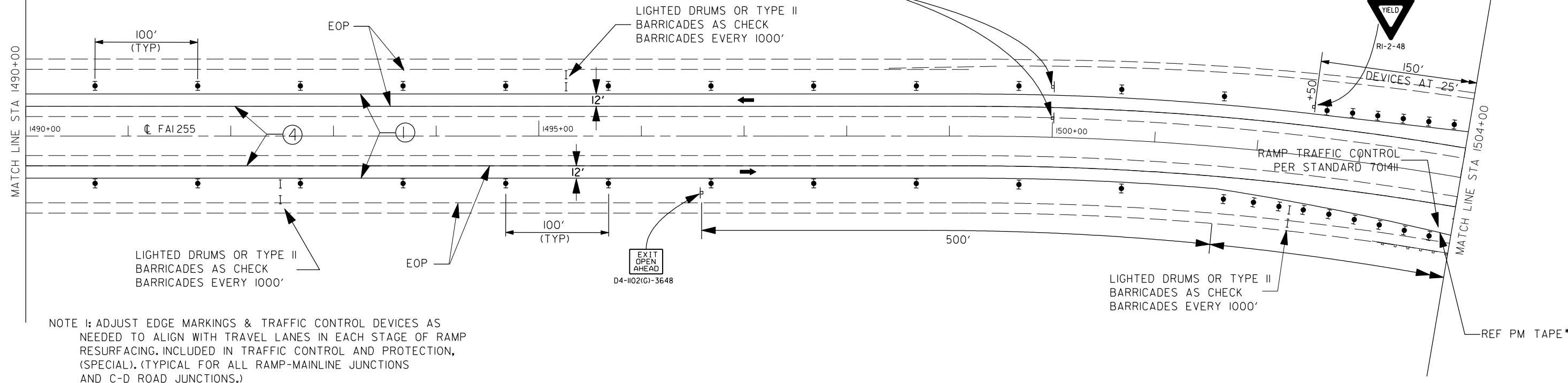
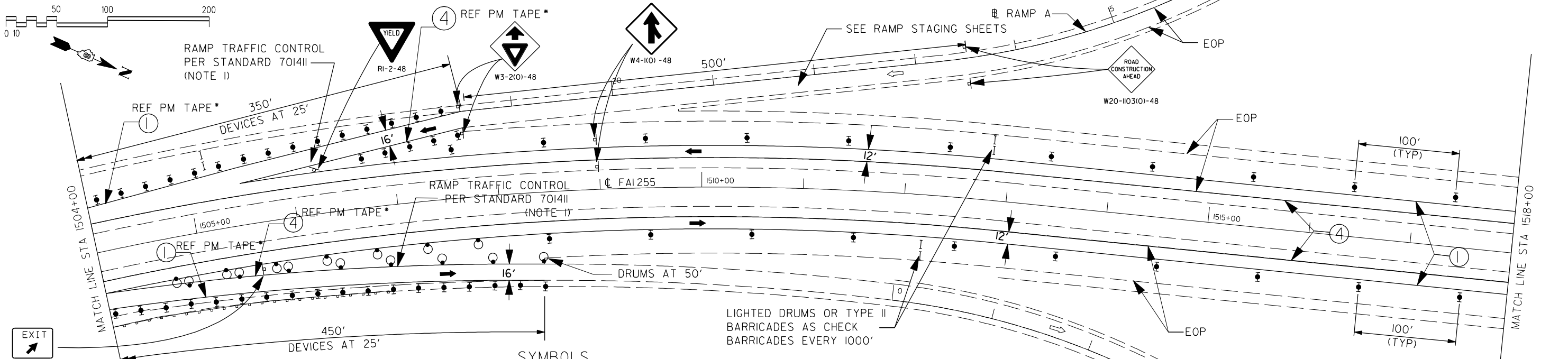
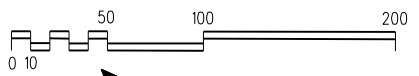


- ① TEMP PVMT MK LINE 4 - SOLID WHITE
- ③ TEMP PVMT MK LINE 4 - WHITE SKIP DASH
- ④ TEMP PVMT MK LINE 4 - SOLID YELLOW
- ⑥ PAVT MARKING REMOVAL
- ⑦ WORK ZONE PAVT MK REM

WORK ZONE	W2-115(O)-3618
SPEED LIMIT	R2-1-3648
55	
PHOTO ENFORCED	R10-19aP-3618
XXXX FINE MINIMUM	R2-1106-3618



NOTE 1: ADJUST EDGE MARKINGS & TRAFFIC CONTROL DEVICES AS NEEDED TO ALIGN WITH TRAVEL LANES IN EACH STAGE OF RAMP RESURFACING. INCLUDED IN TRAFFIC CONTROL AND PROTECTION, (SPECIAL). (TYPICAL FOR ALL RAMP-MAINLINE JUNCTIONS AND C-D ROAD JUNCTIONS.)



SYMBOLS

- |                                |  |  |
|--------------------------------|--|--|
| PRE-STAGE CONSTRUCTION         | ARROW BOARD  | DRUM WITH STEADY BURNING MONODIRECTIONAL LIGHT |
| STAGE CONSTRUCTION             | TYPE II BARRICADE OR DRUM  | TYPE III BARRICADE                             |
| BRIDGE CONSTRUCTION THIS STAGE | DIRECTIONAL INDICATOR BARRICADE WITH STEADY BURN MONODIRECTIONAL LIGHT             | TEMPORARY CONCRETE BARRIER                     |
| SIGN                           | TYPE II BARRICADE, DRUM OR VERTICAL BARRICADE W/ STEADY BURN MONODIRECTIONAL LIGHT | IMPACT ATTENUATOR                              |
| DIRECTION INDICATOR BARRICADE  | CONE, DRUM OR BARRICADE  | DIRECTION OF TRAFFIC                           |

\* USE REFLECTORIZED PVMT MARKING TAPE FOR TEMP EDGE STRIPES AT RAMP JUNCTIONS PER STD 701411

GONZALEZ COMPANIES, LLC 618-222-2221 WWW.GONZALEZCOS.COM

FILE NAME = D876F10-sh160-stage 1.dgn	USER NAME = Nate	DESIGNED - JG	REVISED - ---
		DRAWN - NC	REVISED - ---
		CHECKED - CH	REVISED - ---
		DATE - 09/23/2013	REVISED - ---

STATE OF ILLINOIS  
DEPARTMENT OF TRANSPORTATION

TEMPORARY TRAFFIC CONTROL - STAGE 1

SCALE: 1"=50' SHEET NO. 17 OF 37 SHEETS STA. 1490+00 TO STA. 1518+00

F.A.I. RTE.	SECTION	COUNTY	TOTAL SHEETS	SHEET NO.
255	60-(8,9)RS-1	MADISON	206	60
CONTRACT NO. 76F10				
ILLINOIS FED. AID PROJECT				

PLOT DRIVER = M:\Admin\Reference Data\CAD\_Support\workspace\standard\pilot\wpr\inter-hof.f.plt  
PEN TABLE = M:\Admin\Reference Data\CAD\_Support\workspace\standard\cab\as@penplotdrv.txt-sub.tbl