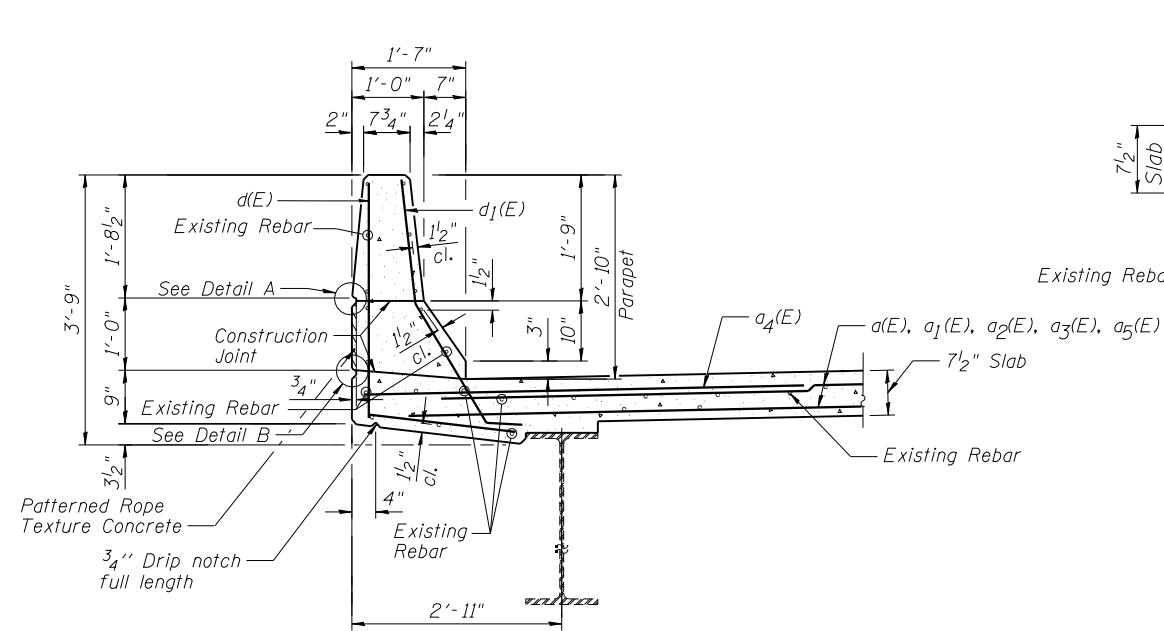
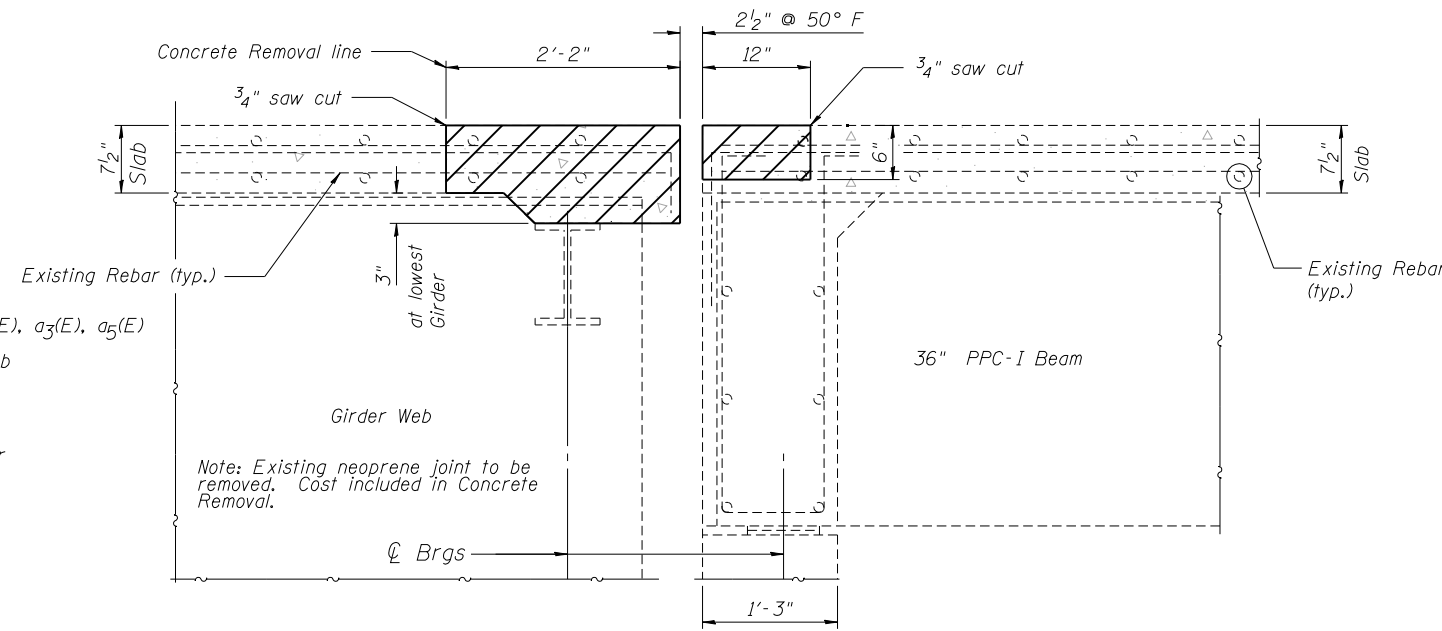


SN 060-0220 (SB)  
SN 060-0221 (NB)  
SOUTH ABUTMENT  
BILL OF MATERIAL

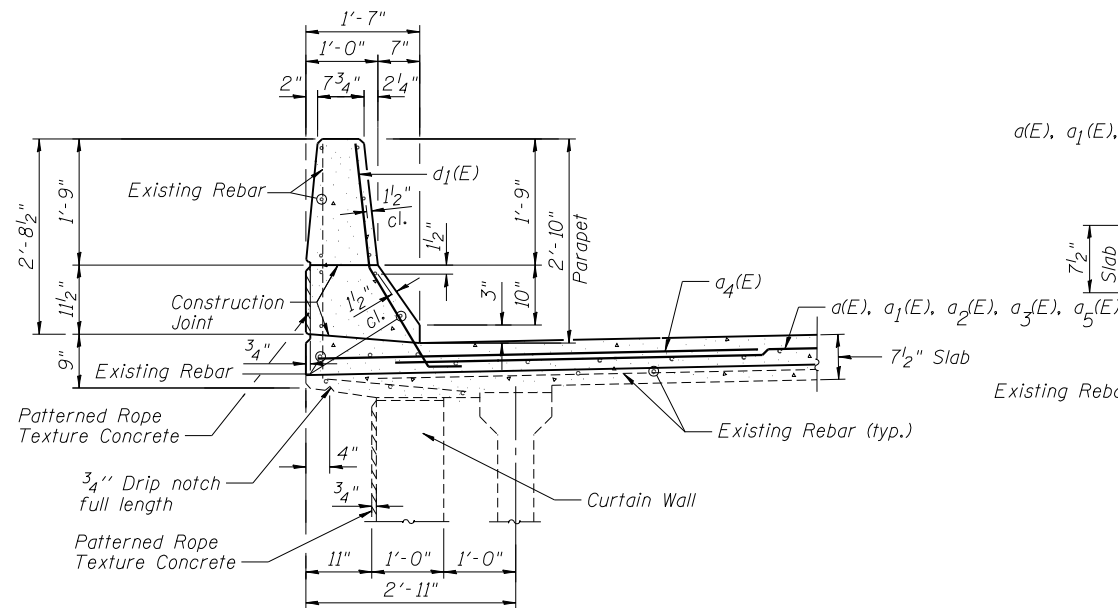
Bar	No.	Size	Length	Shape	
a(E)	22	#5	27'-6"	—	
a <sub>1</sub> (E)	22	#5	28'-0"	—	
a <sub>3</sub> (E)	22	#5	24'-3"	—	
a <sub>4</sub> (E)	20	#6	4'-0"	—	
d(E)	12	#4	5'-5"	L	
d <sub>1</sub> (E)	24	#5	3'-11"	L	
x(E)	291	#5	2'-7"	L	
x <sub>1</sub> (E)	291	#5	2'-6"	L	
Item				Unit	Quantity
Reinforcement Bars, Epoxy Coated				Pound	3630
Bar Splicers				Each	22



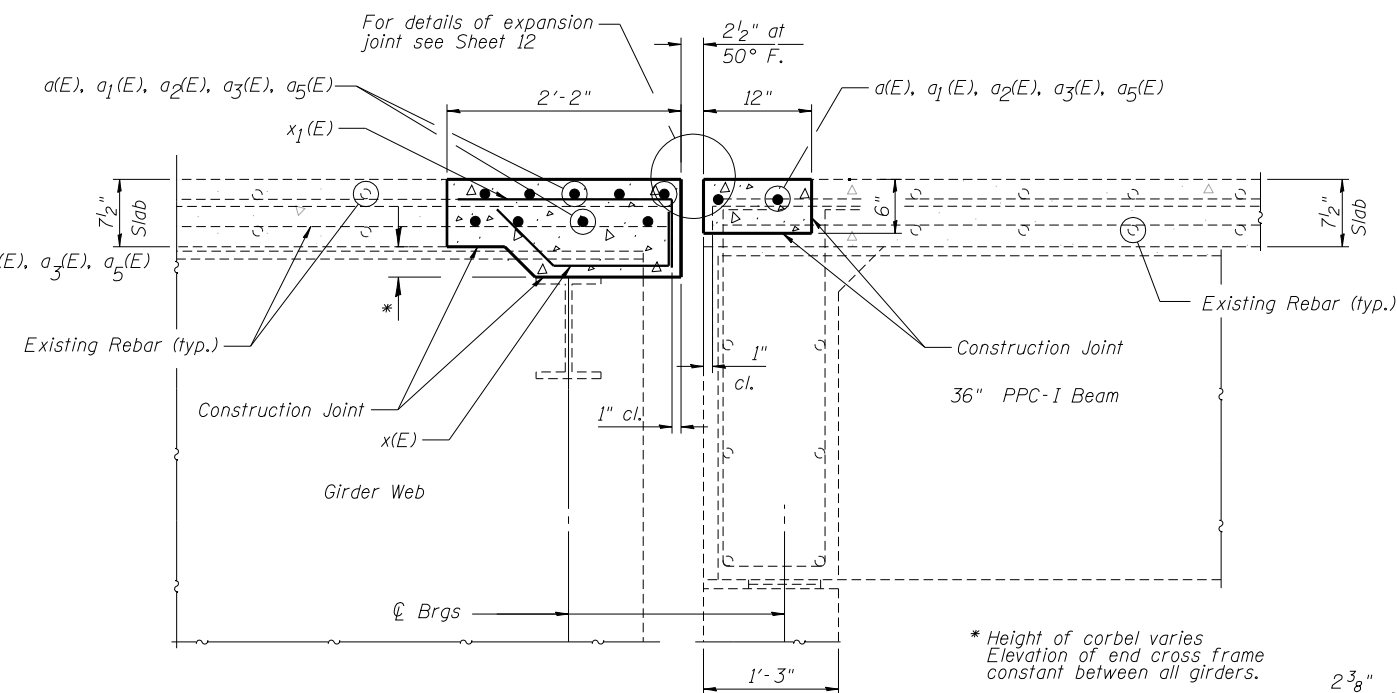
SECTION C-C THRU BRIDGE PARAPET



SECTION A-A  
CONCRETE REMOVAL DETAIL



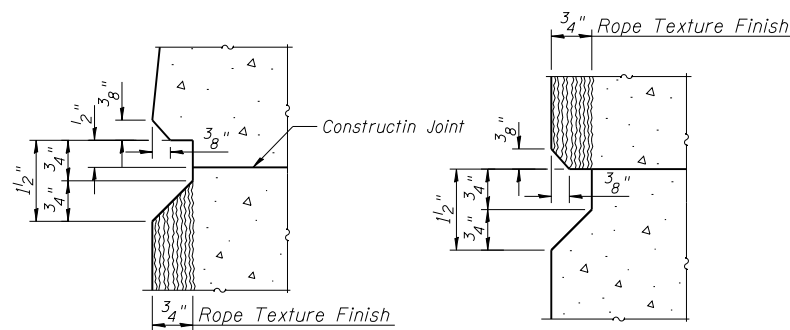
SECTION D-D THRU ABUTMENT PARAPET



SECTION B-B  
CONCRETE REPLACEMENT DETAIL

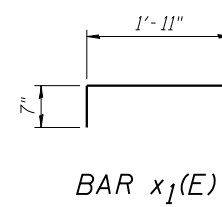
SN 060-0220 (SB)  
SN 060-0221 (NB)  
NORTH ABUTMENT  
BILL OF MATERIAL

Bar	No.	Size	Length	Shape	
a <sub>1</sub> (E)	22	#5	28'-0"	—	
a <sub>2</sub> (E)	22	#5	18'-7"	—	
a <sub>4</sub> (E)	20	#6	4'-0"	—	
a <sub>5</sub> (E)	22	#5	20'-9"	—	
d(E)	12	#4	5'-5"	L	
d <sub>1</sub> (E)	24	#5	3'-11"	L	
x(E)	243	#5	2'-7"	L	
x <sub>1</sub> (E)	243	#5	2'-6"	L	
Item				Unit	Quantity
Reinforcement Bars, Epoxy Coated				Pound	3100
Bar Splicers				Each	22

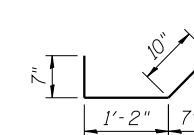


DETAIL A

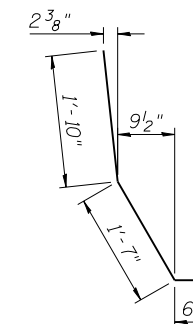
DETAIL B



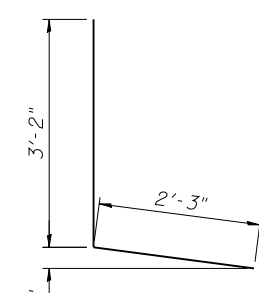
BAR x<sub>1</sub>(E)



BAR x(E)



BAR d<sub>1</sub>(E)



BAR d(E)

5/22/2013 8:51:12 AM C:\Users\sdgn\OneDrive\Documents\Projects\0220-0221\060-0220SB\060-0221NB\060-0221NB-Deck-Joint-Details.dgn

FILE NAME = #FILES#



USER NAME = sdgn	DESIGNED - SDG	REVISED -
PLOT SCALE = #SCALE#	CHECKED - FAS	REVISED -
PLOT DATE = 5/22/2013	DRAWN - DMG	REVISED -
	CHECKED - SDG	REVISED -

STATE OF ILLINOIS  
DEPARTMENT OF TRANSPORTATION

DECK JOINT DETAILS  
STRUCTURE NO. 060-0220SB & 060-0221NB

SHEET NO. 12 OF 19 SHEETS

F.A.I. R.T.E.	SECTION	COUNTY	TOTAL SHEETS	SHEET NO.
255	60-(8,9) RS-1	MADISON	206	162
			CONTRACT NO. 76F10	
ILLINOIS FED. AID PROJECT				