

STATE OF ILLINOIS
DEPARTMENT OF TRANSPORTATION
DIVISION OF HIGHWAYS

**PROPOSED
HIGHWAY PLANS**

FAP 42 (IL 127)
SECTION 102-1RS-3, 102-TS
PROJECT ACF-0042 (107)
RESURFACING & TRAFFIC SIGNALS
WASHINGTON COUNTY

C-98-031-13

F.A.P. RTE.	SECTION	COUNTY	TOTAL SHEETS	SHEET NO.
42	102-1RS-3, 102-TS	WASHINGTON	46	1
		ILLINOIS	CONTRACT NO. 76F47	

FOR INDEX OF SHEETS, SEE SHEET NO. 2

IL 127 (HOLZHAUER ST. TO IL 15)

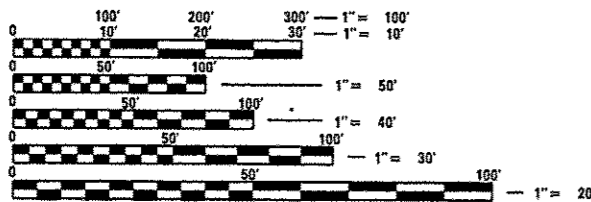
ADT = 8900 (2012) (ACTUAL)
ADT = 9150 (2015) (ESTIMATED)
ADT = 11150 (2035) (ESTIMATED)
SU = 2.2%
MU = 3.9%

IL 127 (IL 15 TO MOCKINGBIRD DR.)

ADT = 8900 (2012) (ACTUAL)
ADT = 9150 (2015) (ESTIMATED)
ADT = 11150 (2035) (ESTIMATED)
SU = 3.1%
MU = 4.2%

IL 127 (MOCKINGBIRD TO STA. 1523+39.18)

ADT = 8900 (2012) (ACTUAL)
ADT = 9150 (2015) (ESTIMATED)
ADT = 11150 (2035) (ESTIMATED)
SU = 3.4%
MU = 8.4%



FULL SIZE PLANS HAVE BEEN PREPARED USING STANDARD ENGINEERING SCALES. REDUCED SIZED PLANS WILL NOT CONFORM TO STANDARD SCALES. IN MAKING MEASUREMENTS ON REDUCED PLANS, THE ABOVE SCALES MAY BE USED.

J.U.L.I.E.
JOINT UTILITY LOCATION INFORMATION FOR EXCAVATION
1-800-892-0123
OR 811

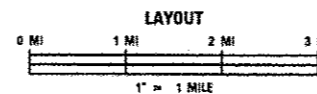
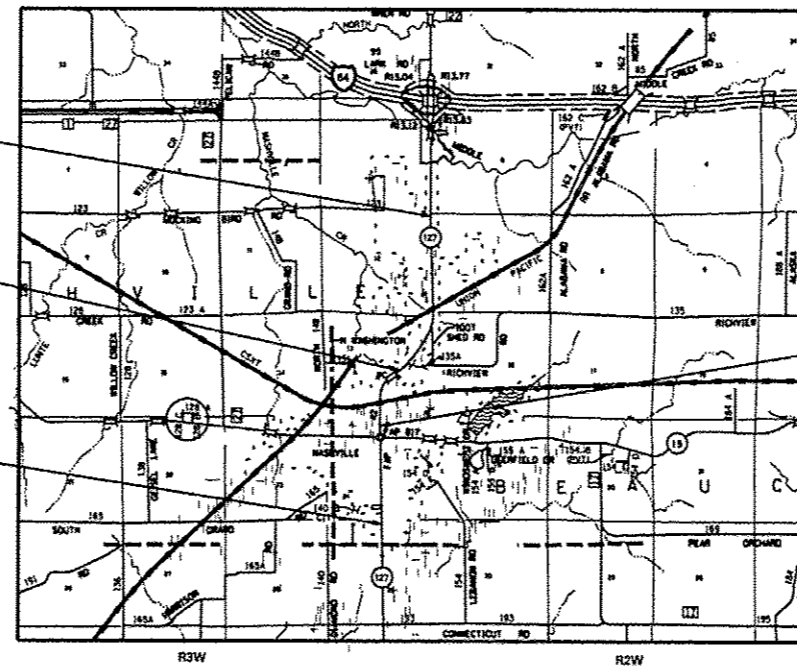
PROJECT ENGINEER: PATTI LEBEAU (618) 346-3179
PROJECT MANAGER: REBECCA THARP (618) 346-3323

CONTRACT NO. 76F47

END PROJECT
STA. 1523 + 40
LAT: + 38.38221
LONG: -89.37100

STA. EQUATION
1400 + 66.93 BK =
1408 + 51.90 AH

BEGIN PROJECT
STA. 927 + 60.00
LAT: + 38.33251
LONG: -89.38094



GROSS LENGTH = 19,087 FT. = 3.615 MILE
NET LENGTH = 19,087 FT. = 3.615 MILE

DESIGN DESIGNATION
N/A



STA. EQUATION
978 + 29.08 BK =
1375 + 26.92 AH

STATE OF ILLINOIS
DEPARTMENT OF TRANSPORTATION
DIVISION OF HIGHWAYS

SUBMITTED October 17, 2013
John D. Baranzelli, P.E.
DEPUTY DIRECTOR OF HIGHWAYS, REGION 5 ENGINEER
Dec 6, 2013
John D. Baranzelli, P.E.
ENGINEER OF DESIGN AND ENVIRONMENT
Dec 6, 2013
Omer Osman, P.E.
DIRECTOR OF HIGHWAYS, CHIEF ENGINEER

PRINTED BY THE AUTHORITY
OF THE STATE OF ILLINOIS