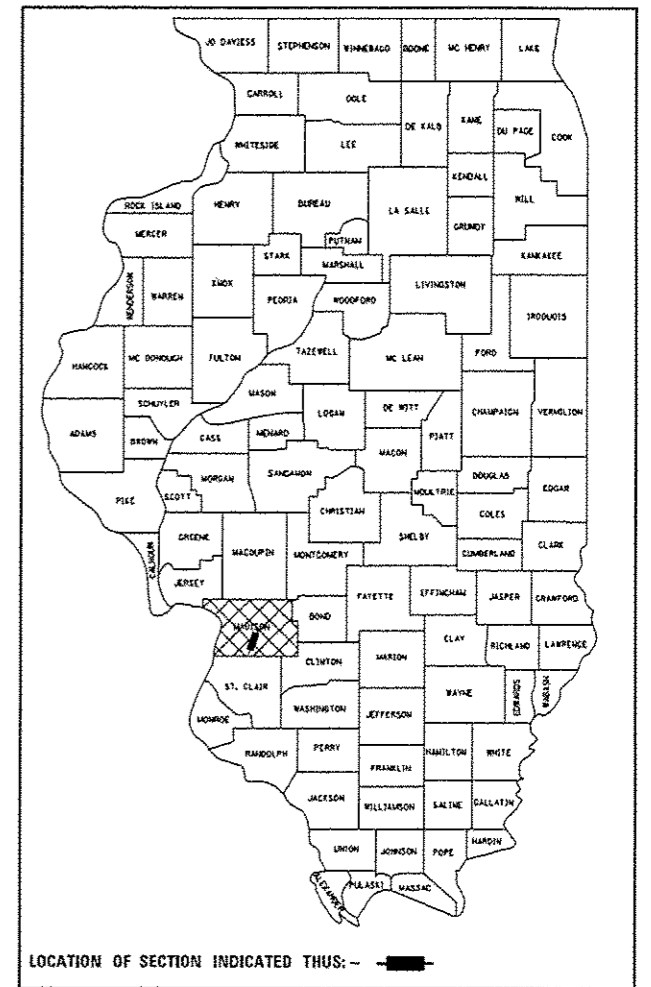


STATE OF ILLINOIS
DEPARTMENT OF TRANSPORTATION
DIVISION OF HIGHWAYS
**PROPOSED
HIGHWAY PLANS**

F.A.I. RTE.	SECTION	COUNTY	TOTAL SHEETS	SHEET NO.
55/70	DIST 8 ITS 2014-1	MADISON	44	1
		ILLINOIS	CONTRACT NO. 76G08	

D-98-010-13



INDEX OF SHEETS

1. COVER SHEET
2. GENERAL NOTES, LEGEND AND COMMITMENTS
- 3.&4. SUMMARY OF QUANTITIES 1 & 2 OF 2
5. ITS KEY MAP
6. TRAFFIC DATA SCHEDULE, LANE RESTRICTIONS SCHEDULE AND TRAFFIC CONTROL AND PROTECTION SCHEDULE
- 7.&8. POLE MOUNTED CCTV DETAIL WITH CAMERA LOWERING DEVICE 1 & 2 OF 2
9. CCTV AND RADAR VEHICLE DETECTION MOUNTING DETAIL
10. LIGHT POLE FOUNDATION DETAILS
- 11.-22. ITS PLAN 1A-12A OF 12
23. CONDUIT ATTACHED TO STRUCTURE NO.060-0018 (WILSON HEIGHTS RD.) DETAIL
- 24.-35. EROSION CONTROL PLAN 1A-12A OF 12
- 36.-41. COMMUNICATION SHEETS
42. FIBER NETWORK DETAIL
43. FIBER TERM-SPL SUMMARY & OPTICAL EQUIPMENT SCHEDULE
44. SOIL BORING

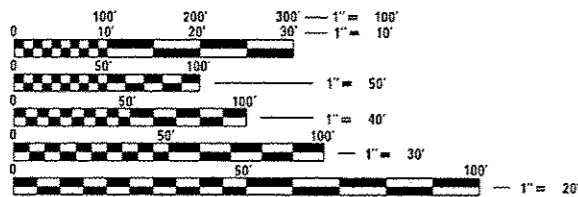
**FAI ROUTE 55/70 (I-55/70)
SECTION DIST 8 ITS 2014-1**

**ITS ALONG I-55 /70 FROM WEST
OF US 40 TO I-55 NORTH OF I-270
MADISON COUNTY**

C-98-008-13

STANDARDS

- | | | |
|-----------|-----------|-----------|
| 280001-07 | 701101-04 | 701106-02 |
| 701400-07 | 701406-08 | 701411-08 |
| 701446-05 | 701456-03 | 701501-06 |
| 701901-03 | 814001-02 | 814006-02 |
| 836001-02 | 878001-09 | |



FULL SIZE PLANS HAVE BEEN PREPARED USING STANDARD ENGINEERING SCALES. REDUCED SIZED PLANS WILL NOT CONFORM TO STANDARD SCALES. IN MAKING MEASUREMENTS ON REDUCED PLANS, THE ABOVE SCALES MAY BE USED.

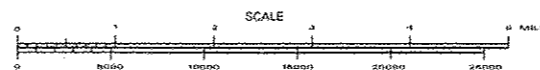
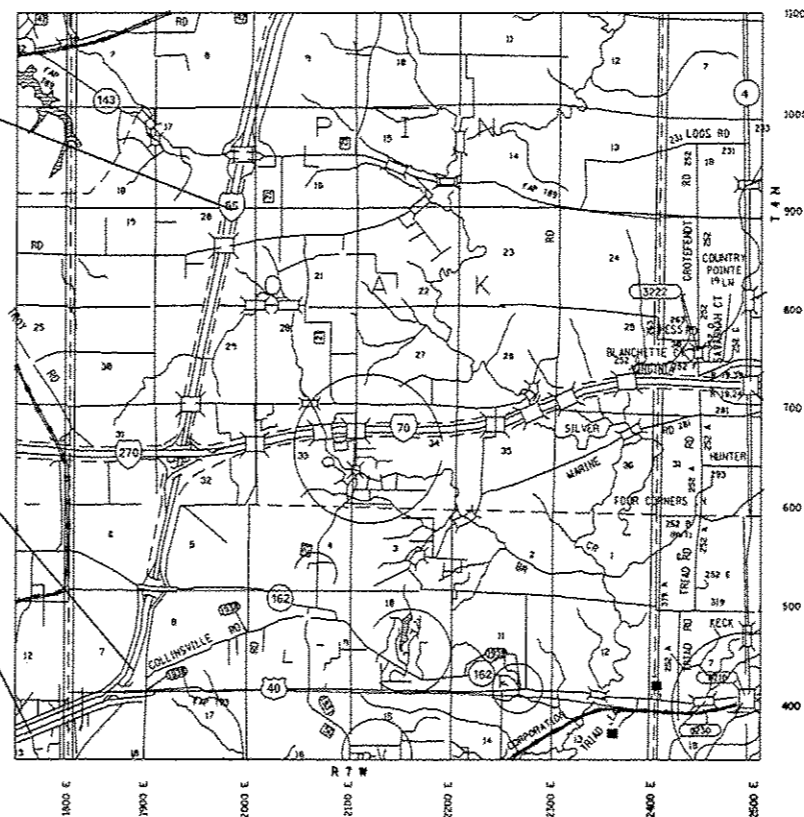
J.U.L.I.E.
JOINT UTILITY LOCATION INFORMATION FOR EXCAVATION
1-800-892-0123
OR 811

PROJECT ENGINEER: PATTI LEBEAU 618-346-3179
SQUAD LEADER: MICHAEL PRESTON 618-346-3143
LIAISON ENGINEER: LINDA LEONARD 618-346-3285
CONTRACT NO. 76G08

PROJECT ENDS
I-55 STA.1148 + 69
(NOTE: STATIONING
INCREASES GOING SOUTH)
PIN OAK TOWNSHIP

STATION EQUATION
STA. 856 + 00 BK = STA 1382 + 94 AH.

PROJECT BEGINS
I-55/70 STA.774 + 80
(NOTE: STATIONING
INCREASES GOING NORTH)
JARVIS TOWNSHIP



GROSS LENGTH = 31,545 FT = 5.97 MILE
NET LENGTH = 31,545 FT = 5.97 MILE

STATE OF ILLINOIS
DEPARTMENT OF TRANSPORTATION
DIVISION OF HIGHWAYS

SUBMITTED October 17 20 13

Jeffrey J. Ken
DEPUTY DIRECTOR OF HIGHWAYS REGION FIVE ENGINEER
Dec 6 20 13

John D. Baranelli PE, Inc
ENGINEER OF DESIGN AND ENVIRONMENT
Dec 6 20 13

Omer Osman PE, Inc
DIRECTOR OF HIGHWAYS, CHIEF ENGINEER

**PRINTED BY THE AUTHORITY
OF THE STATE OF ILLINOIS**