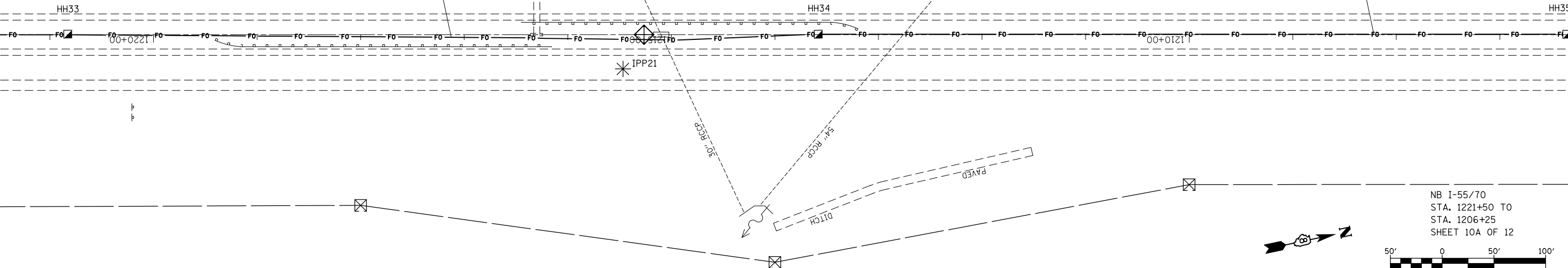


MATCHLINE STA. 1221+50

MATCHLINE STA. 1206+25

LOCATE UNDERGROUND CABLE-720'  
UNDERGROUND CONDUIT, PVC, 4" DIA, MULTI-DUCT-720'  
FIBER OPTIC CABLE IN CONDUIT, 72 COND. S.M. F.O.-750'  
ELECTRIC CABLE IN CONDUIT, TRACER, NO. 14 1C-730'

LOCATE UNDERGROUND CABLE-715'  
UNDERGROUND CONDUIT, PVC, 4" DIA, MULTI-DUCT-715'  
FIBER OPTIC CABLE IN CONDUIT, 72 COND. S.M. F.O.-745'  
ELECTRIC CABLE IN CONDUIT, TRACER, NO. 14 1C-725'



\* SEE INLET AND PIPE PROTECTION INSTALLATION GENERAL NOTE

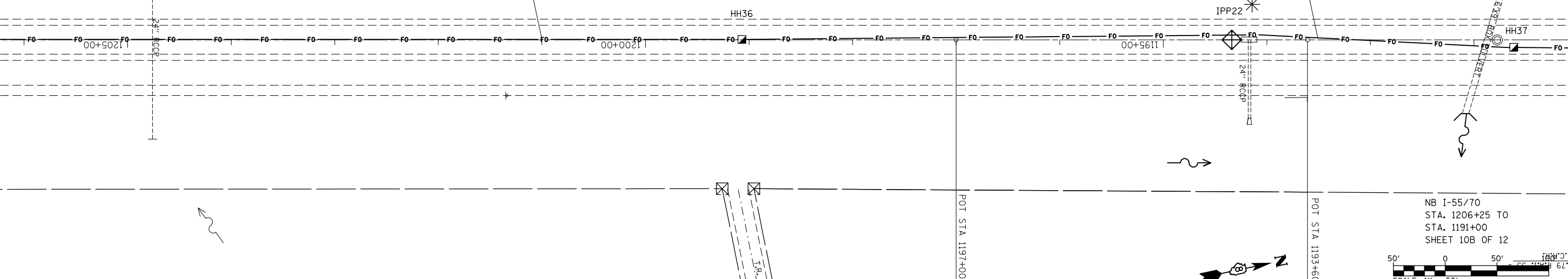
NB I-55/70  
STA. 1221+50 TO  
STA. 1206+25  
SHEET 10A OF 12  
SCALE: 1" = 50'

MATCHLINE STA. 1206+25

MATCHLINE STA. 1191+00

LOCATE UNDERGROUND CABLE-720'  
UNDERGROUND CONDUIT, PVC, 4" DIA, MULTI-DUCT-720'  
FIBER OPTIC CABLE IN CONDUIT, 72 COND. S.M. F.O.-750'  
ELECTRIC CABLE IN CONDUIT, TRACER, NO. 14 1C-730'

LOCATE UNDERGROUND CABLE-740'  
UNDERGROUND CONDUIT, PVC, 4" DIA, MULTI-DUCT-740'  
FIBER OPTIC CABLE IN CONDUIT, 72 COND. S.M. F.O.-770'  
ELECTRIC CABLE IN CONDUIT, TRACER, NO. 14 1C-750'



\* SEE INLET AND PIPE PROTECTION INSTALLATION GENERAL NOTE

NB I-55/70  
STA. 1206+25 TO  
STA. 1191+00  
SHEET 10B OF 12  
SCALE: 1" = 50'

FILE NAME =	USER NAME = prestonme	DESIGNED -	REVISED -
et:\pw\work\p\idot\prestonme\d0320429\d076g08-shr-ITS.dgn		DRAWN -	REVISED -
	PLOT SCALE = 100.0000' / 1in.	CHECKED -	REVISED -
	PLOT DATE = 10/17/2013	DATE -	REVISED -

STATE OF ILLINOIS  
DEPARTMENT OF TRANSPORTATION

ITS PLAN 10A & 10B OF 12

SCALE: SHEET NO. OF SHEETS STA. TO STA.

F.A.I. RTE.	SECTION	COUNTY	TOTAL SHEETS	SHEET NO.
55/70	DIST 8 ITS 2014-1	MADISON	44	20
CONTRACT NO.76G08				
FED. ROAD DIST. NO. ILLINOIS FED. AID PROJECT				