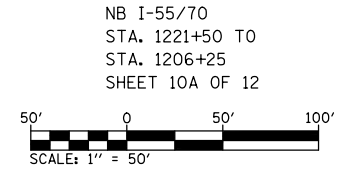
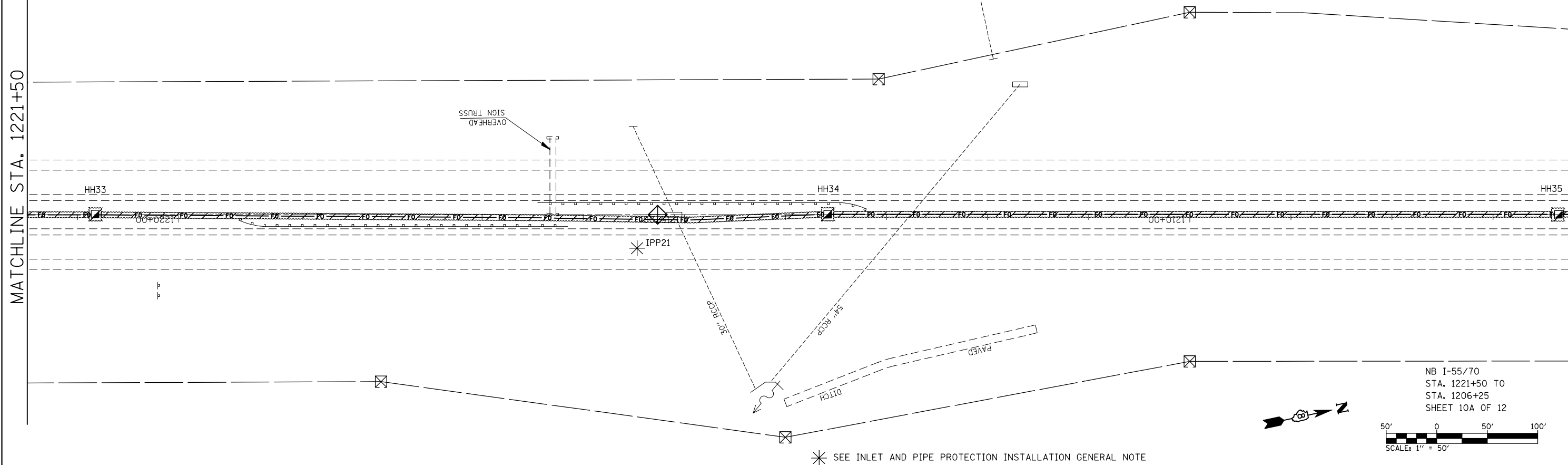


MATCHLINE STA. 1221+50

MATCHLINE STA. 1206+25

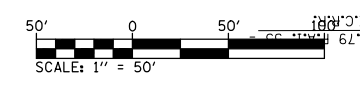
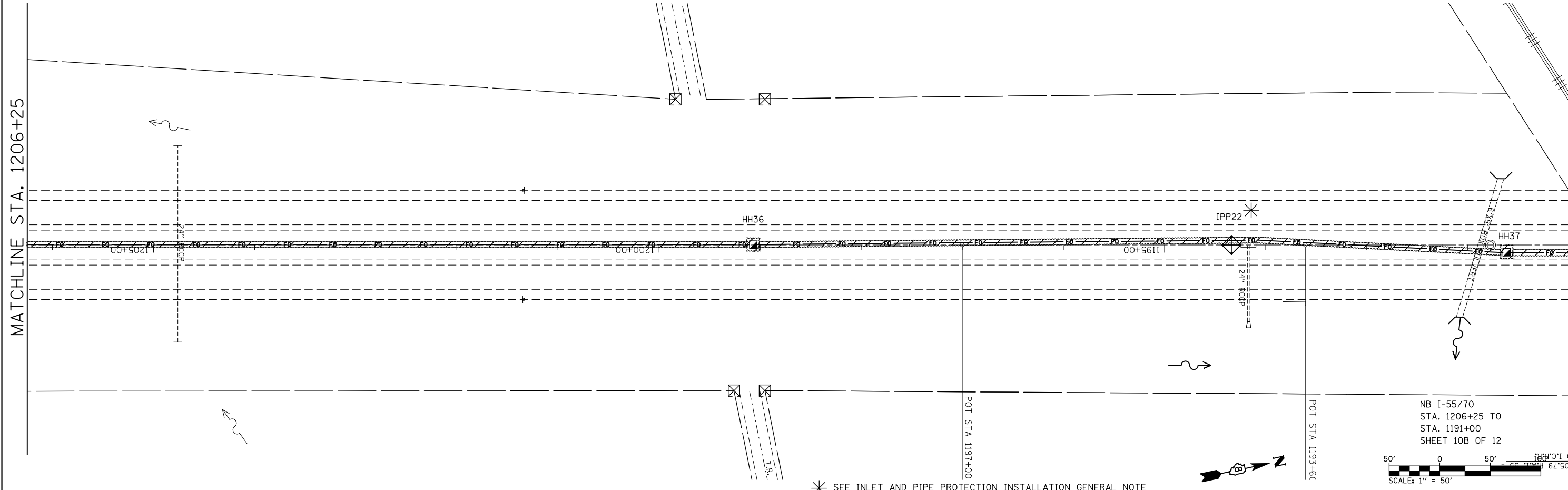


NB I-55/70  
 STA. 1221+50 TO  
 STA. 1206+25  
 SHEET 10A OF 12

\* SEE INLET AND PIPE PROTECTION INSTALLATION GENERAL NOTE

MATCHLINE STA. 1206+25

MATCHLINE STA. 1191+00



NB I-55/70  
 STA. 1206+25 TO  
 STA. 1191+00  
 SHEET 10B OF 12

\* SEE INLET AND PIPE PROTECTION INSTALLATION GENERAL NOTE

|  |                               |            |           |
|--|-------------------------------|------------|-----------|
| FILE NAME =  | USER NAME = prestonme         | DESIGNED - | REVISED - |
| et:\pwork\p\dot\prestonme\d0320429\d076g08-sh1-ITS.dgn |                               | DRAWN -    | REVISED - |
|  | PLOT SCALE = 100.0000' / 1in. | CHECKED -  | REVISED - |
|  | PLOT DATE = 10/17/2013        | DATE -     | REVISED - |

**STATE OF ILLINOIS  
 DEPARTMENT OF TRANSPORTATION**

**EROSION CONTROL PLAN 10A & 10B OF 12**

SCALE: SHEET NO. OF SHEETS STA. TO STA.

|   |                   |         |              |           |
|---|-------------------|---------|--------------|-----------|
| F.A.I. RTE.                                   | SECTION           | COUNTY  | TOTAL SHEETS | SHEET NO. |
| 55/70   | DIST 8 ITS 2014-1 | MADISON | 44           | 33        |
| CONTRACT NO.76G08                             |                   |         |              |           |
| FED. ROAD DIST. NO. ILLINOIS FED. AID PROJECT |                   |         |              |           |