

FAP RTE	SECTION	COUNTY	TOTAL SHEETS	SHEET NO.
103	22VB-RS	WASHINGTON	7	1
		ILLINOIS	CONTRACT NO. 76G50	

INDEX OF SHEETS

- 1 COVER SHEET
- 2 GENERAL NOTES, HIGHWAY STANDARDS AND PAVEMENT DESIGN
- 3-4 SUMMARY OF QUANTITIES
- 5 TYPICAL SECTIONS AND MISCELLANEOUS DETAILS
- 6 SCHEDULE OF QUANTITIES
- 7 PLAN AND PROFILE SHEET

**STATE OF ILLINOIS
DEPARTMENT OF TRANSPORTATION
DIVISION OF HIGHWAYS**

PROPOSED HIGHWAY PLANS

FAP RTE 103 (IL 4 /IL 13)

SECTION 22VB-RS

RESURFACE BRIDGE APPROACHES

ON SN 095-0070

IL 4 /IL 13 OVER IC RR

WASHINGTON COUNTY

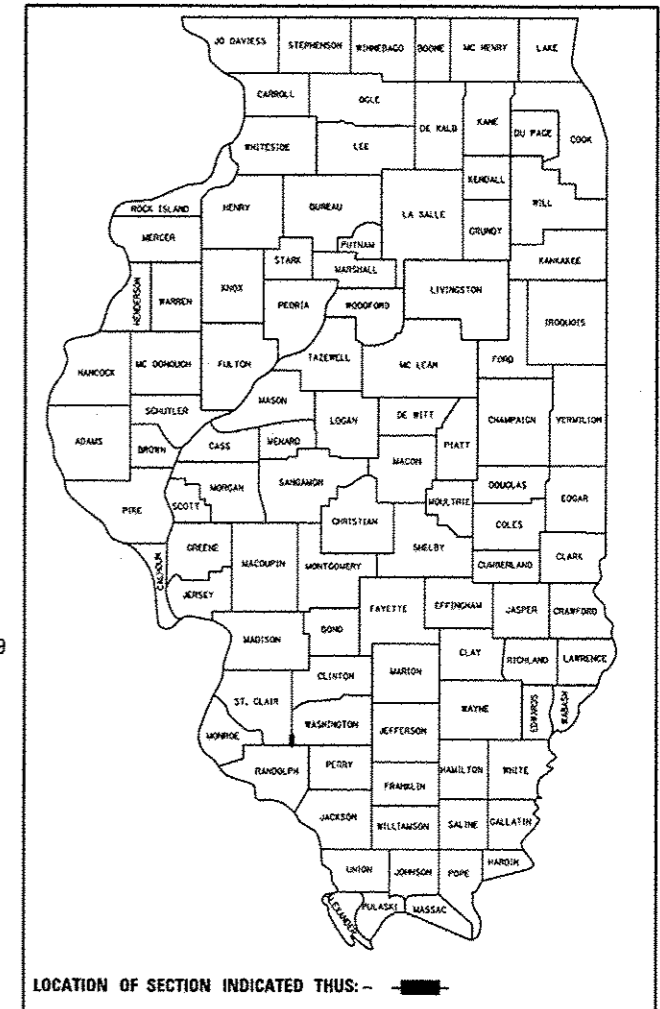
C-98-052-13

DESIGN DESIGNATION

MINOR ARTERIAL

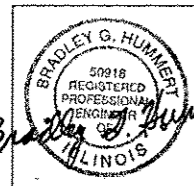
2011 ADT (ACTUAL) = 5,800
 2014 ADT (ESTIMATED) = 6,000
 2034 ADT (ESTIMATED) = 7,300
 SU = 3.3%
 MU = 6.5%
 DIRECTIONAL DIST. = 50%/50%

D-98-049-013

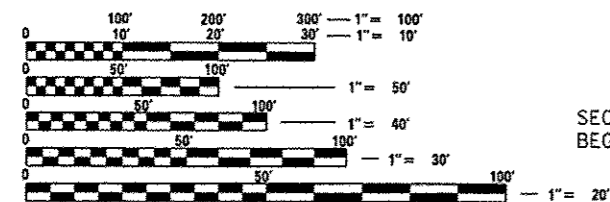


SN 095-0070 STA 354+68.89
 3 SPAN WF STRUCTURE
 171'-0" BK/BK ABUTS.
 LATITUDE: 38.22011° N
 LONGITUDE: 89.70325° W

HMG ENGINEERS, Inc.
 1075 Lake Road, P.O. Box 70
 Carlyle, Illinois 62231
 www.hmgengineers.com

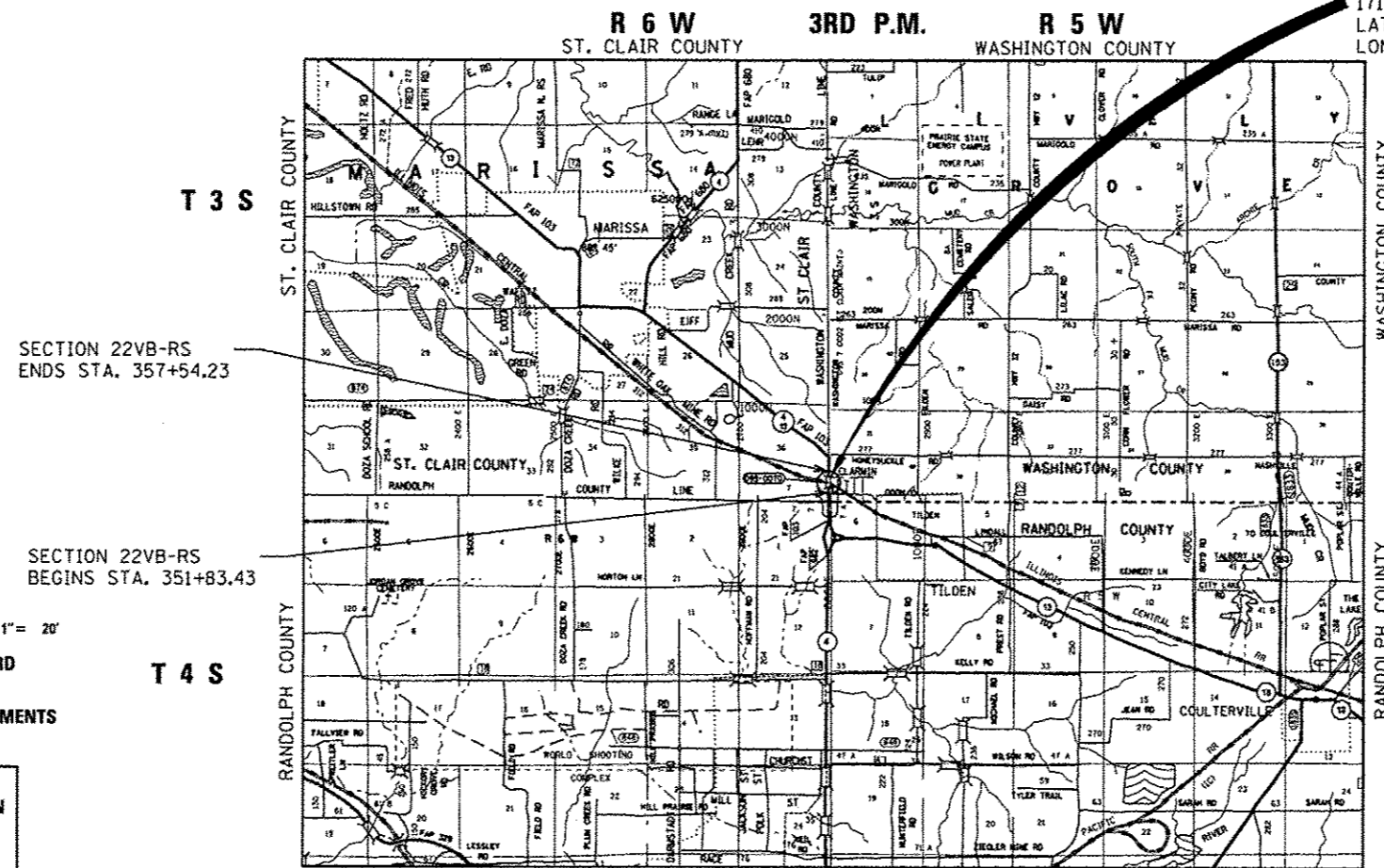


Reviewed 10/29/13
Exp. 11/30/13



FULL SIZE PLANS HAVE BEEN PREPARED USING STANDARD ENGINEERING SCALES. REDUCED SIZED PLANS WILL NOT CONFORM TO STANDARD SCALES. IN MAKING MEASUREMENTS ON REDUCED PLANS, THE ABOVE SCALES MAY BE USED.

J.U.L.I.E.
 JOINT UTILITY LOCATION INFORMATION FOR EXCAVATION
 1-800-892-0123
 OR 811



MAP SCALE: 1"=1 MILE

GROSS LENGTH = 571 FT. = 0.110 MILE
 NET LENGTH = 400 FT. = 0.076 MILE

PROJECT ENGINEER: PATTI LEBEAU (618) 346-3179
 SQUAD LEADER: BILLIE OWEN (618) 346-3209

CONTRACT NO. 76G50

STATE OF ILLINOIS
 DEPARTMENT OF TRANSPORTATION
 DIVISION OF HIGHWAYS

SUBMITTED *Oct 31, 2013*
Jeffrey Z. Kan
 DEPUTY DIRECTOR OF HIGHWAYS, REGION 5 ENGINEER

Dec 6, 2013
John D. Baranzelli P.E.
 ENGINEER OF DESIGN AND ENVIRONMENT

Dec 6, 2013
Omer Osman P.E.
 DIRECTOR OF HIGHWAYS, CHIEF ENGINEER

**PRINTED BY THE AUTHORITY
 OF THE STATE OF ILLINOIS**