

STATE OF ILLINOIS
DEPARTMENT OF TRANSPORTATION
DIVISION OF HIGHWAYS

**PROPOSED
HIGHWAY PLANS**

FAI ROUTE 24 (I-24)
SECTION D9 CM BRIDGE REPAIR 2014-1

BRIDGE REPAIRS
MASSAC COUNTY

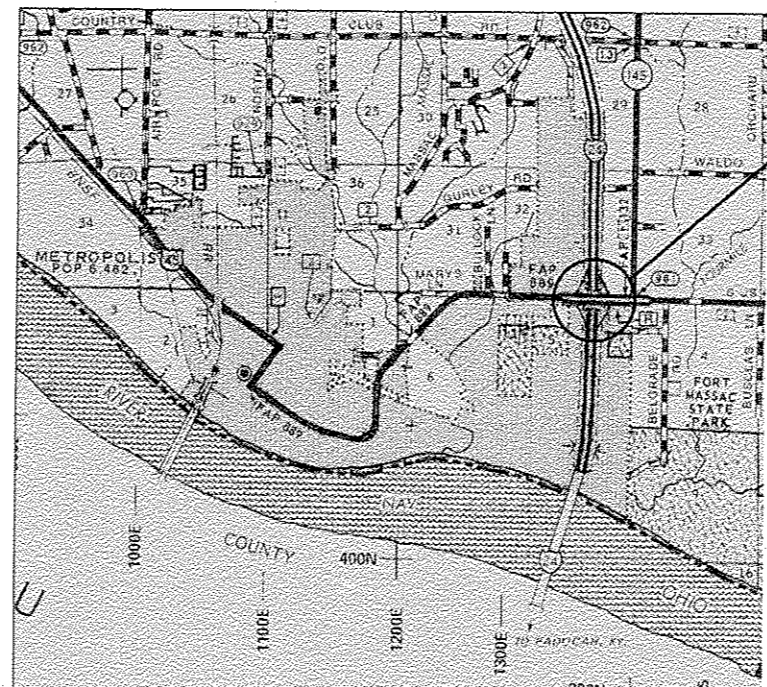
C-99-036-11

F.A.I. RTE.	SECTION	COUNTY	TOTAL SHEETS	SHEET NO.
24		MASSAC	16	1
		ILLINOIS	CONTRACT NO. 78249	

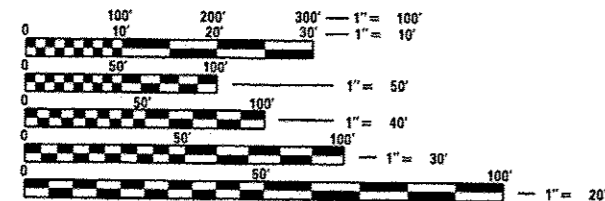
• 09 CM BRIDGE REPAIR 2014-1

FOR INDEX OF SHEETS, SEE SHEET NO. 2

TRAFFIC DATA
2011 ADT = 11,850
WITH 0.5% TRUCKS
POSTED 45 MPH



IMPROVEMENT LOCATION
STRUCTURE NO. 064-0029
U.S. 45 OVER I-24



FULL SIZE PLANS HAVE BEEN PREPARED USING STANDARD ENGINEERING SCALES. REDUCED SIZED PLANS WILL NOT CONFORM TO STANDARD SCALES. IN MAKING MEASUREMENTS ON REDUCED PLANS, THE ABOVE SCALES MAY BE USED.

J.U.L.I.E.
JOINT UTILITY LOCATION INFORMATION FOR EXCAVATION
1-800-892-0123
OR 811

PROJECT ENGINEER: ADRIAN ADAMS (618) 351-5262
PROJECT MANAGER: DAVID PICHE (618) 351-5227

GROSS LENGTH = 193.84 FT. = 0.0367 MILE
NET LENGTH = 193.84 FT. = 0.0367 MILE

CONTRACT NO. 78249

STATE OF ILLINOIS
DEPARTMENT OF TRANSPORTATION
DIVISION OF HIGHWAYS

SUBMITTED Oct 16 2013

Jeffrey J. Keim
DEPUTY DIRECTOR OF HIGHWAYS, REGION ENGINEER

Dec 6 2013
John D. Baranzelle, P.E.
ENGINEER OF DESIGN AND ENVIRONMENT

Dec 6 2013
Omer Osman, P.E.
DIRECTOR OF HIGHWAYS, CHIEF ENGINEER

**PRINTED BY THE AUTHORITY
OF THE STATE OF ILLINOIS**