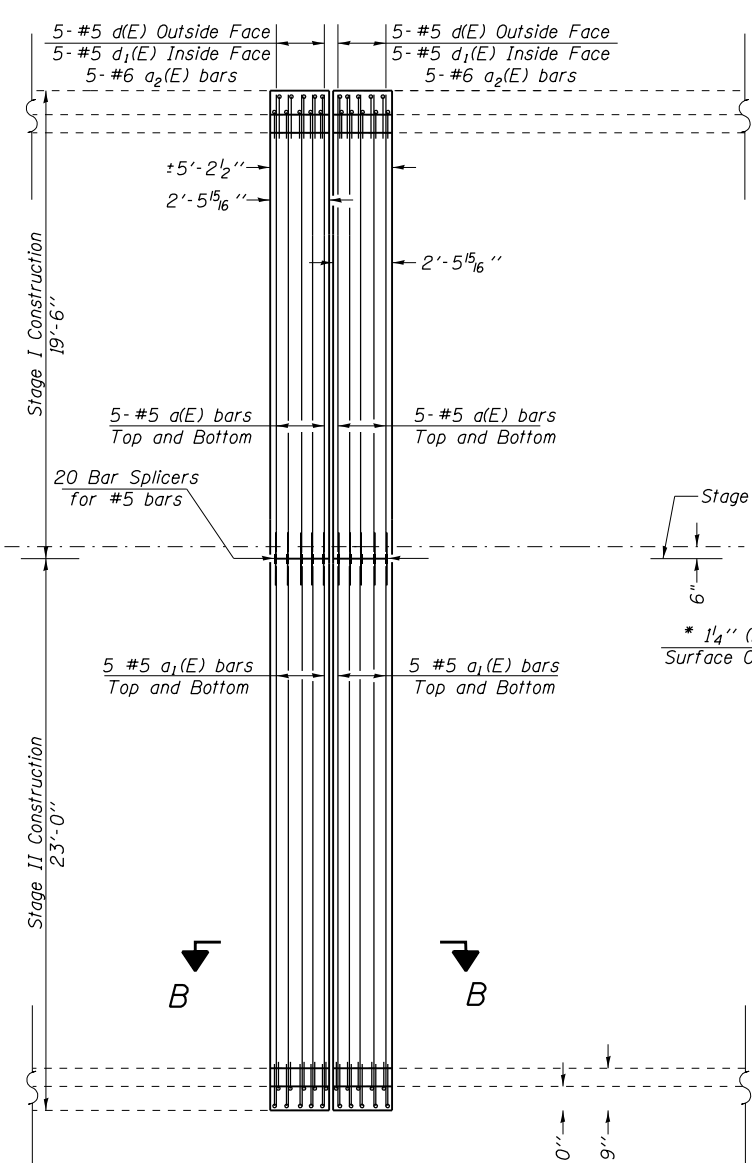
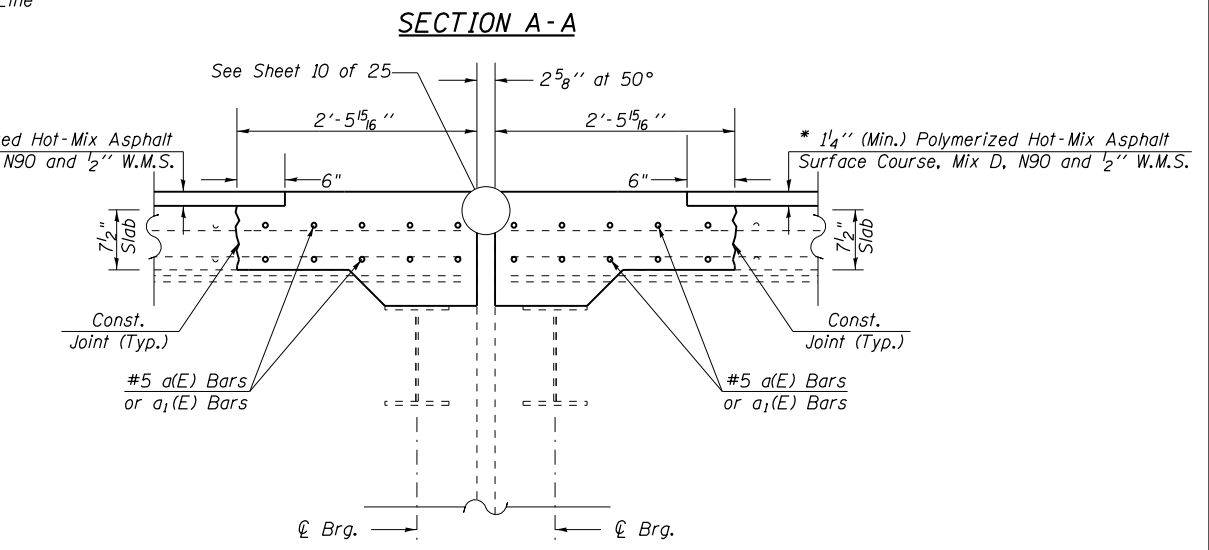
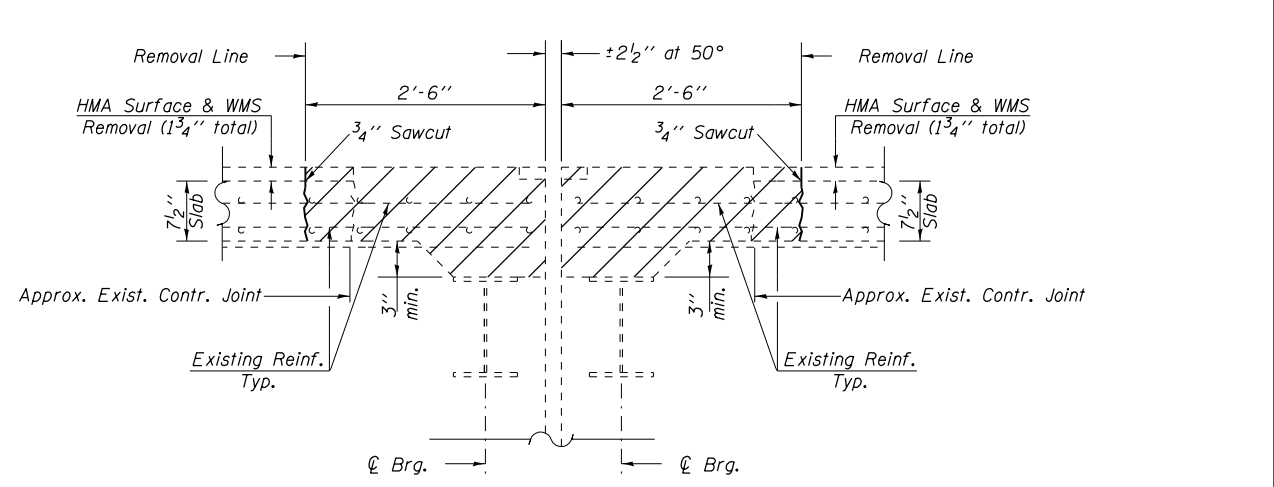


**PIER 3 PLAN  
SHOWING CONCRETE REMOVAL**



**PIER 3 PLAN  
SHOWING NEW CONCRETE**



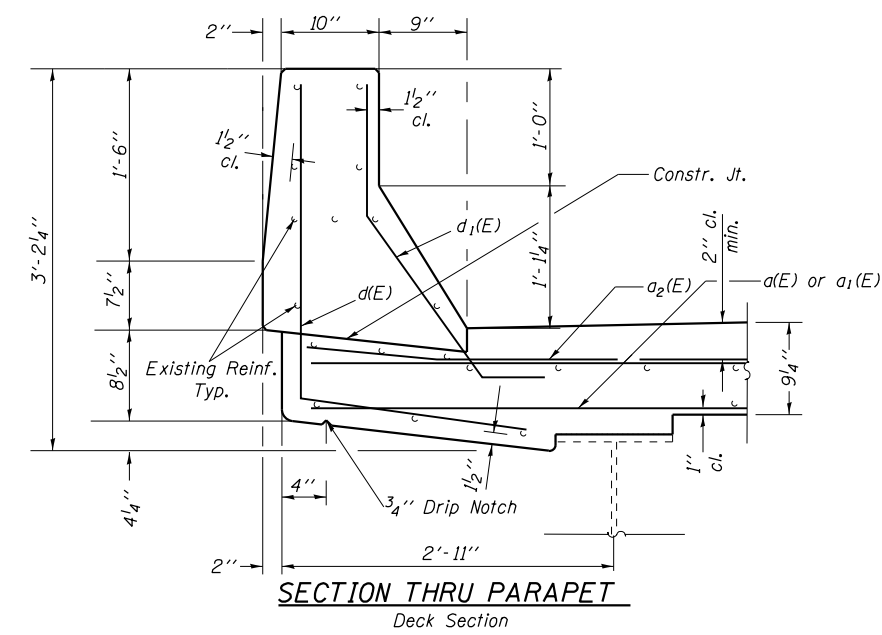
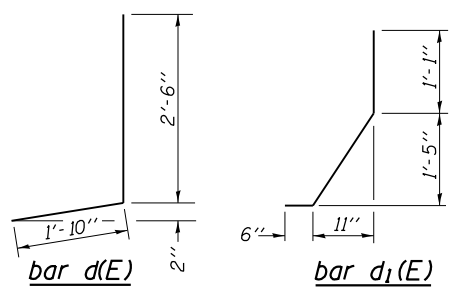
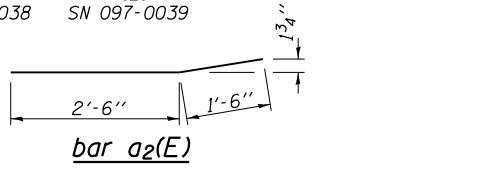
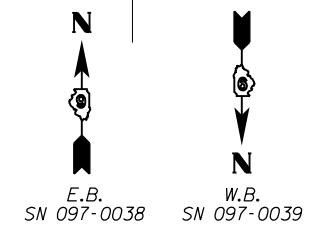
Concrete Removal

**BILL OF MATERIAL (2 PIERS)**

Bar	No.	Size	Length	Shape	
a(E)	40	#5	19'-0"	—	
a1(E)	40	#5	22'-6"	—	
a2(E)	40	#6	4'-0"	—	
d(E)	40	#5	4'-4"	J	
d1(E)	40	#5	3'-3"	J	
Bar Splicers				Each	40
Concrete Superstructure				Cu Yd	16.9
Concrete Removal				Cu Yd	17.1
Reinforcement Bars, Epoxy Coated				Pound	2290

NOTE: Dimensions are based on a rolled rails strip seal joint. If the contractor elects to use welded rail strip seal joint, Deck dimensions may require adjustments to satisfy the details on base sheet EJ-SSJ. \*Intent is to match the existing. \*\* Bend Bars in field to fit.

**PIER #3 JOINT  
REPLACEMENT DETAILS  
I-64 OVER LITTLE WABASH RIVER  
WHITE COUNTY  
SN 097-0038 (E.B.)  
Sn 097-0039 (W.B.)**



**SECTION THRU PARAPET  
Deck Section**